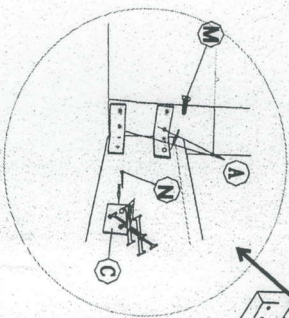


B-55#

Accessory Code	Quantity	Accessory
A	8 Pcs	C-type angle iron
C	10 Pcs	Bed end, bedside, and pad paste X
M	32 Pcs	30*8mm iron
N	30 Pcs	40*5mm iron
X	1 Pcs	L-shaped iron
Y	2 Pcs	Black cotton pad diameter 28mm
Z	4 Pcs	Stand Y and slat Height 22cm



Steps:	Please refer to the picture for specific operations
①	Install C type angle irons on the headboard, Bed end, bedside, and pad paste X
②	Use A type angle irons to fix the headboard and Bedside, and install the feet Z
③	Use A type angle irons to fix the bed end and Bedside, and install the feet Z
④	Install the stand Y and the slat Slat foot can be adjusted in accordance with the slat

