

ASSEMBLY INSTRUCTIONS

MODEL: WATTSU CHAIR

Read this instruction carefully. Remove all wrapping material, staples and straps from the carton. See hardware and furniture part list for guidance. Be sure you have all wooden furniture parts on a clean and flat soft surface, such as a carpet or rug, to prevent from being scratched.

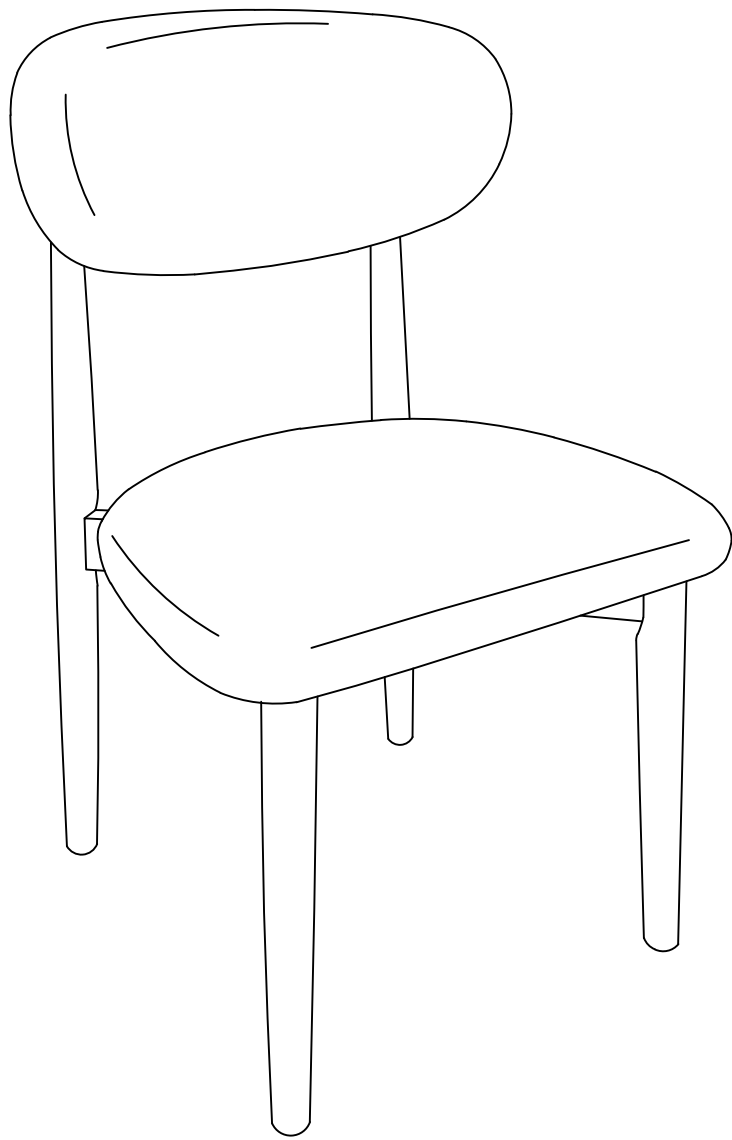
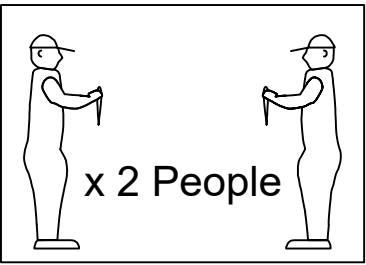
- CAUTION:
- 1. **Do Not FULLY - TIGHTEN** the nut or screw until all is ready to assemble.
 - 2. **Do Not OVER - TIGHTEN** the nut or screw to avoid causing damages to the tread.
 - 3. Keep all hardware part out reach of children.

Part List

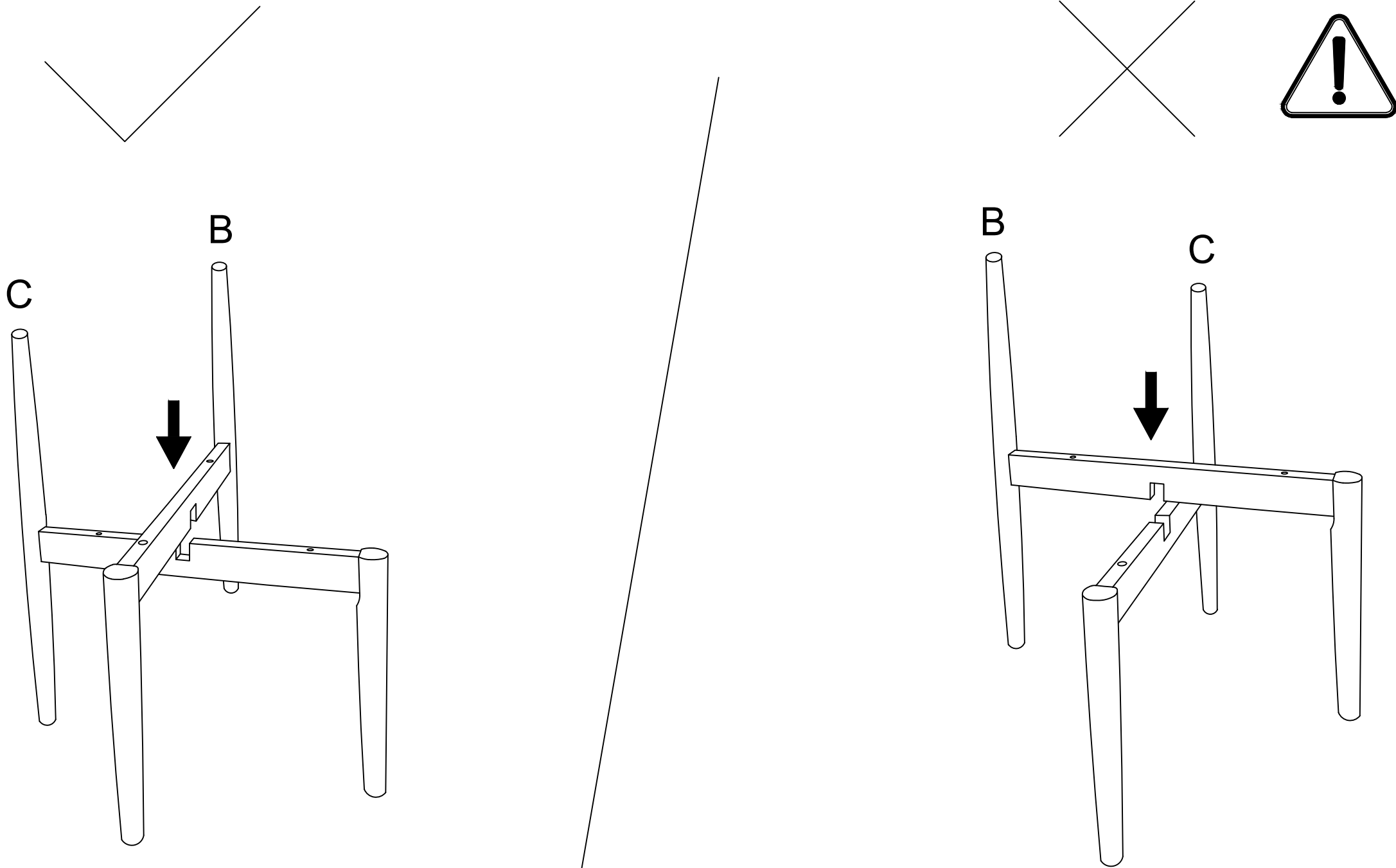
No.	Description	Qty
A	Back Frame	1 pc
B	Right Leg	1 pc
C	Left Leg	1 pc
D	Corner Block (Long)	2 pcs
E	Corner Block (Short)	2 pcs
F	Seat	1 pc

Hardware List

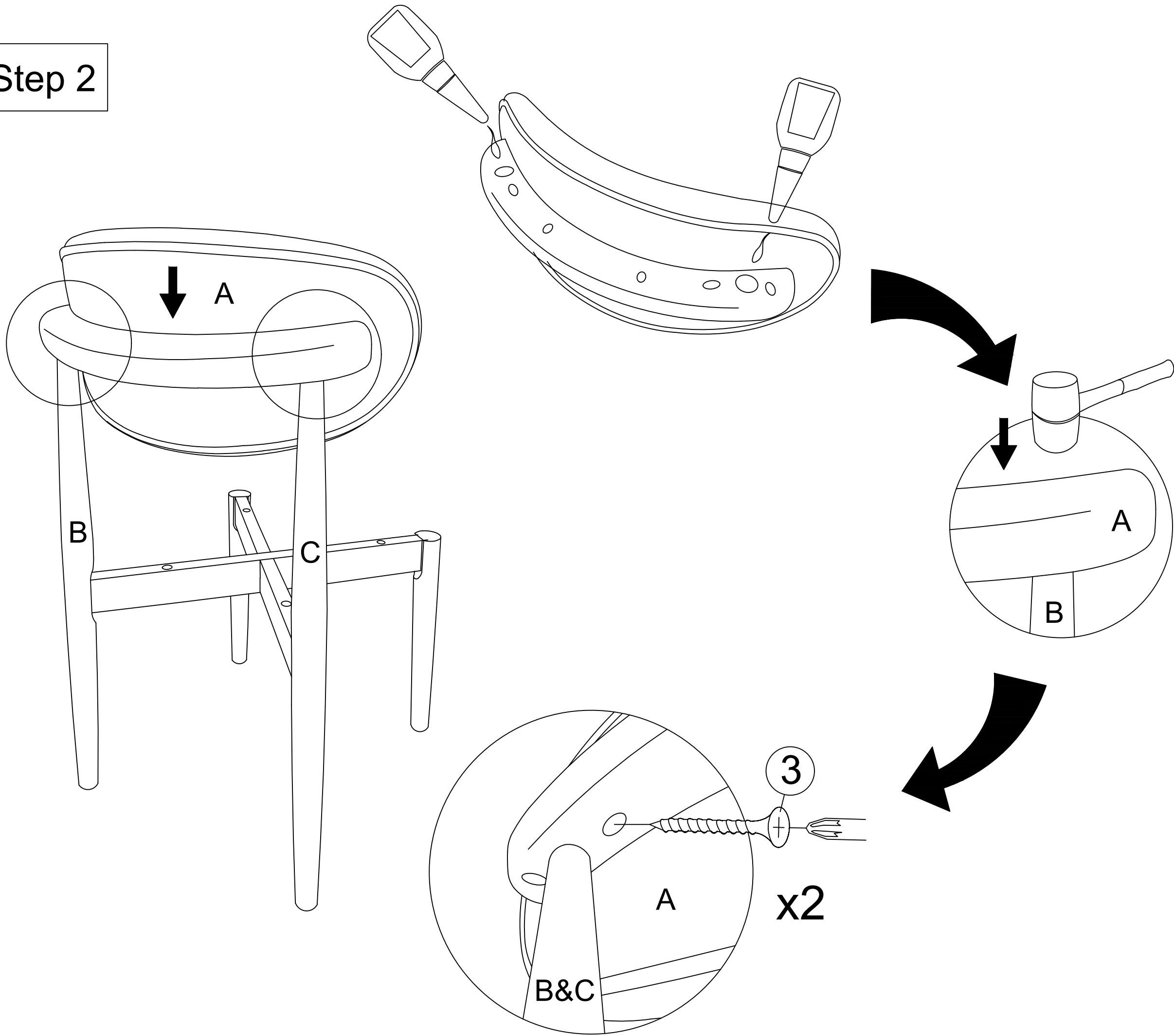
No.	Description	Qty
1	JCBC M6 x 50mm	4 pcs
2	Spring Washer M6	4 pcs
3	Csk 32mm	2 pcs
4	Csk 25mm	16 pcs
5	Allen Key M4 x 110mm	1 pc
6	Felt Pad	4 pcs



Step 1

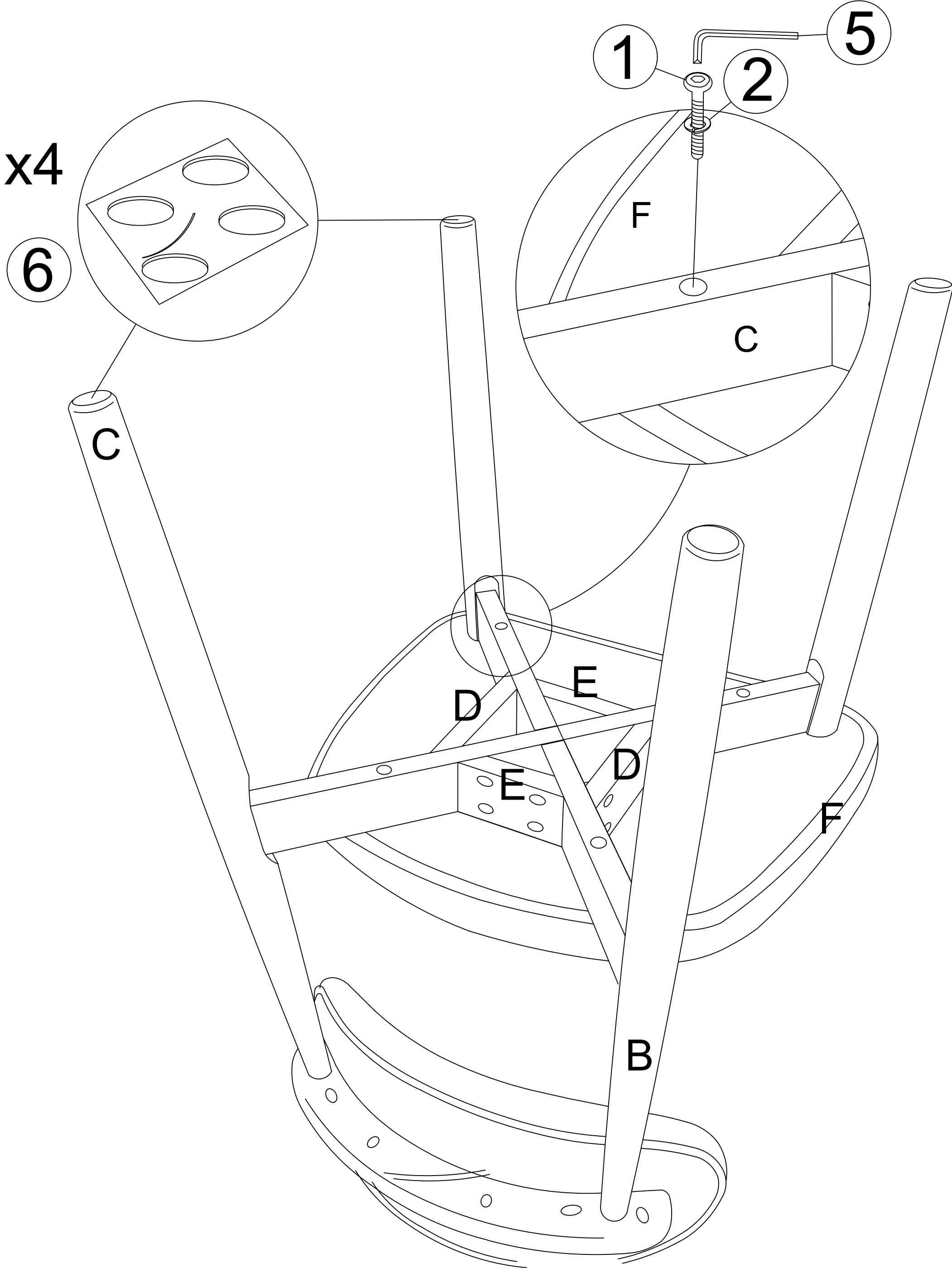


Step 2



ASSEMBLY INSTRUCTIONS

Step 3



Step 4

