

Read this instruction carefully. See hardware and furniture part list for guidance. Be sure all parts are complete, before you assemble. Place all wooden furniture parts on a clean and flat soft surface to prevent from being scratched. Follow the figure to start assembling.

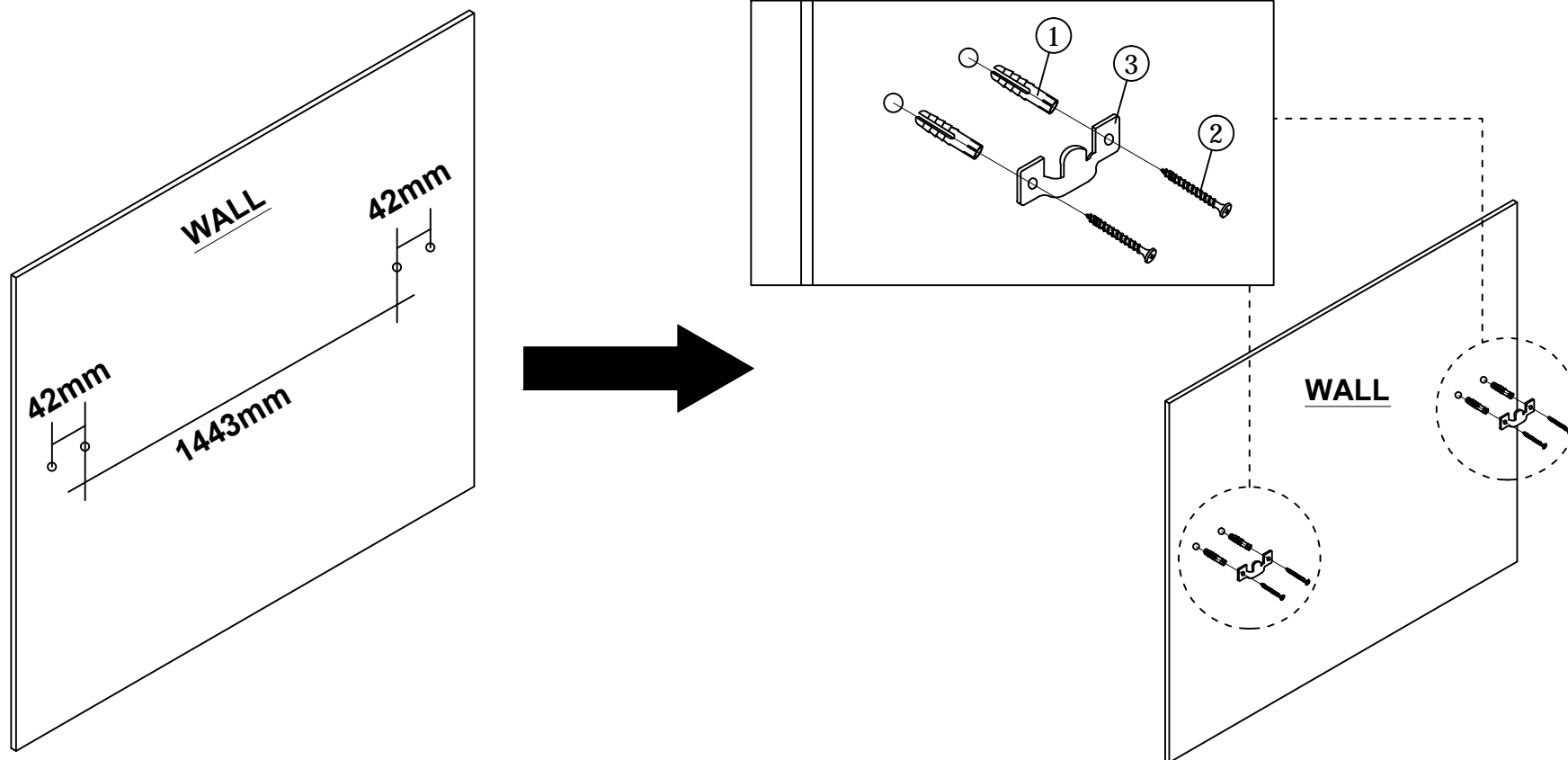
**CAUTIONS** : 1. Do not FULLY - TIGHTEN the nut or nut bolt until all nut or bolt is ready assembled.  
2. Do not OVER - TIGHTEN the nut or bolt to avoid causing damages to the thread.  
3. Keep all hardware parts out of reach of children.

**NOTE** : THE LIST AND QUANTITY SHOWN ARE FOR 1 UNIT ASSEMBLY.

Tool needed : Screwdriver & Rubber Mallet (not provider).

PART LIST				PART LIST (BOX : 1)		
ITEM	DESCRIPTION	BOX	QTY	ITEM	DESCRIPTION	QTY
A	HEADBOARD	1	1 PC	1	PVC WALL PLUG	6 PCS
				2	WOOD SCREW M4 x 38mm (BLACK)	4 PCS
				3	VMB 3161	2 PCS
				4	NO.5 BRASS WALL HOOK	2 PCS

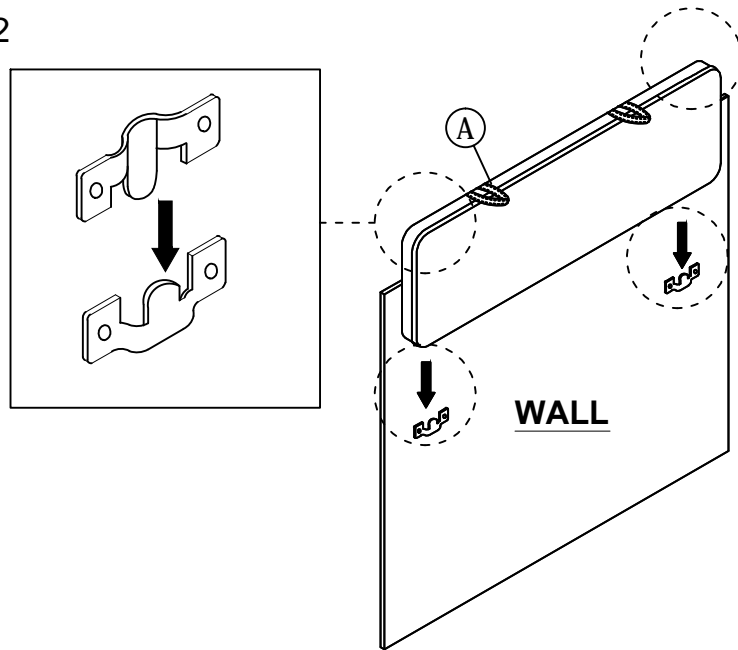
## STEP 1



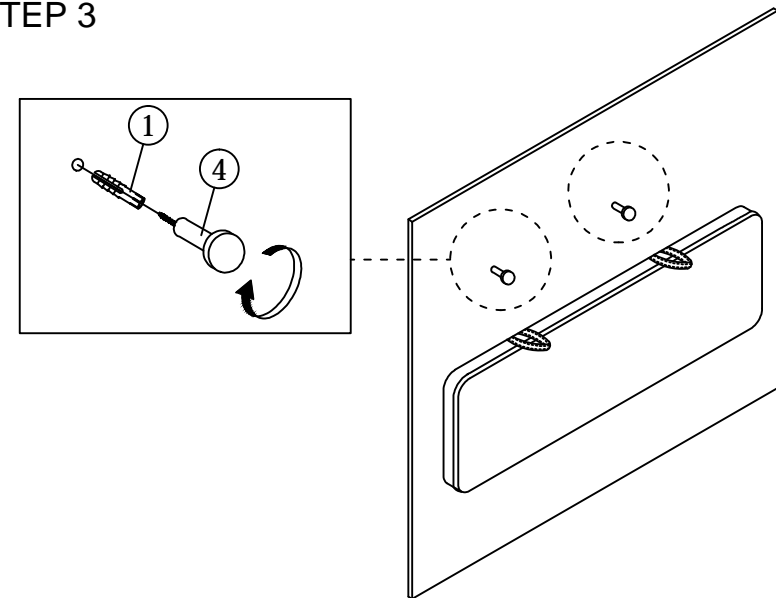
# ASSEMBLY INSTRUCTIONS

2 OF 2

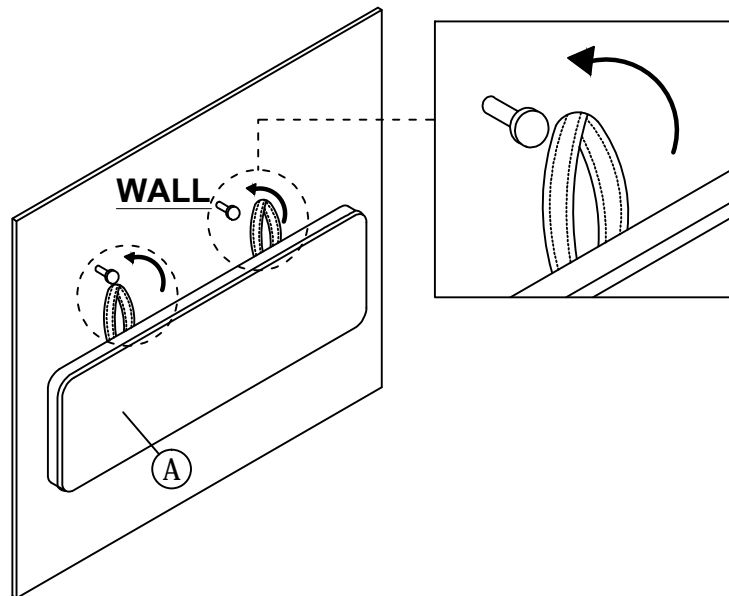
STEP 2



STEP 3



STEP 4



STEP 5

