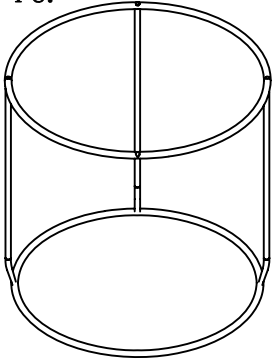


ASSEMBLY INSTRUCTION

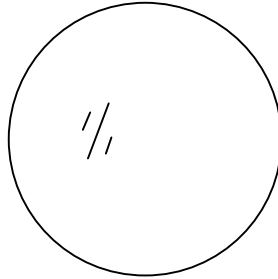
1. We suggest that you spend a short time reading through these instructions and follow the sample step by step example.
2. Do not discard any of the packaging until you have checked that you have all the parts and fittings.
3. Assemble this product on a flat surface.
4. Assemble all parts loosely before tightening any bolts

PARTS LIST

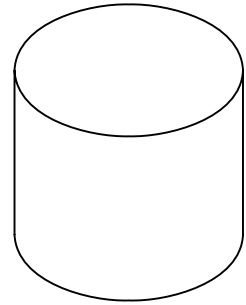
1. - 1 Pc.



2. - 1 Pc.



3. - 1 Pc.



FITTINGS

A. -4Pcs.



B. -4Pcs.

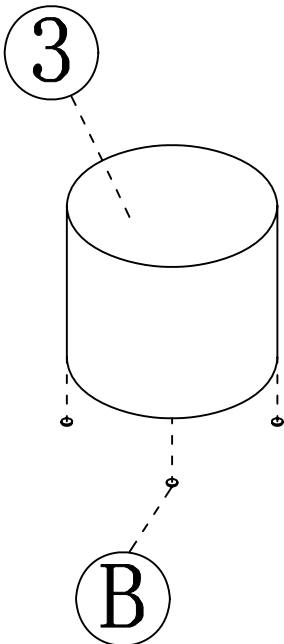


STEP 1: Assemble B under the stool

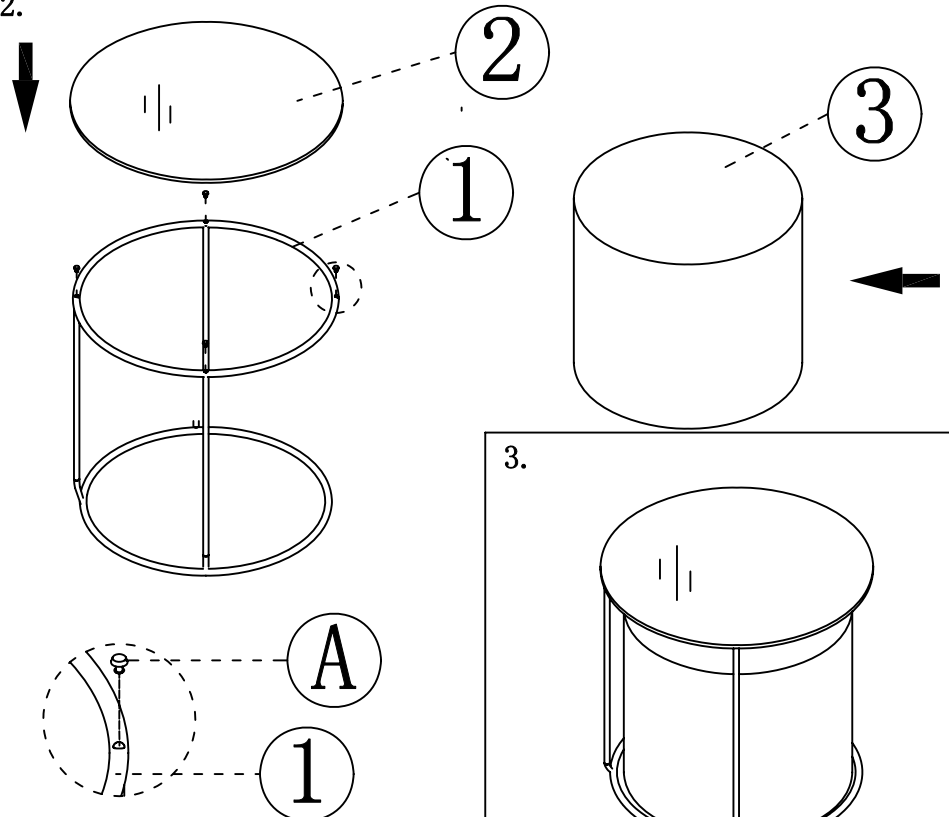
STEP 2 : Put glass on the frame

STEP 3: Put the stool under the frame

1.



2.



3.

