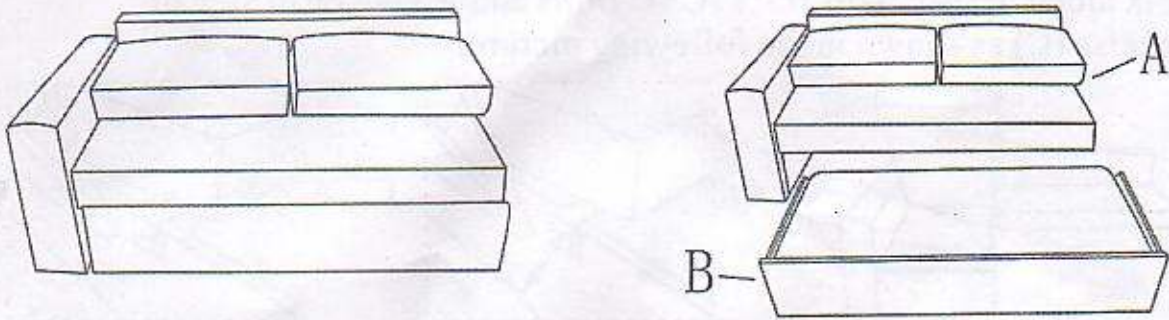
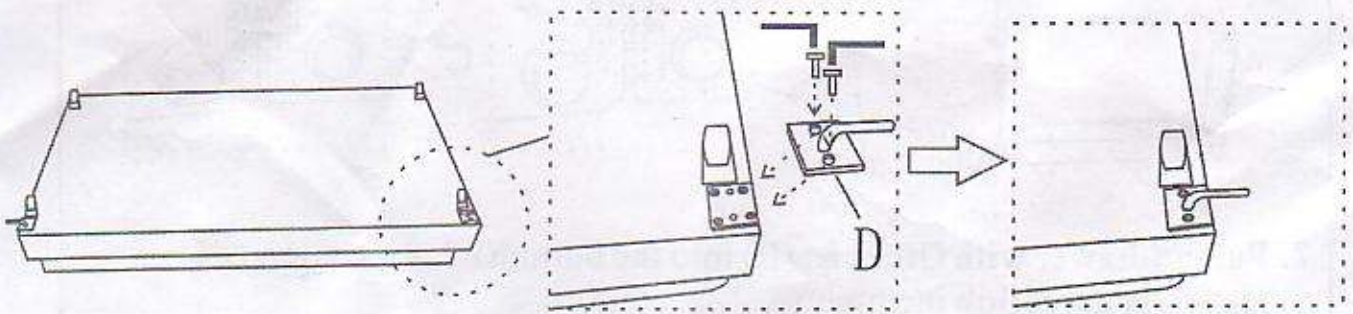


ITEM FS63853 ASSEMBLY INSTRUCTION

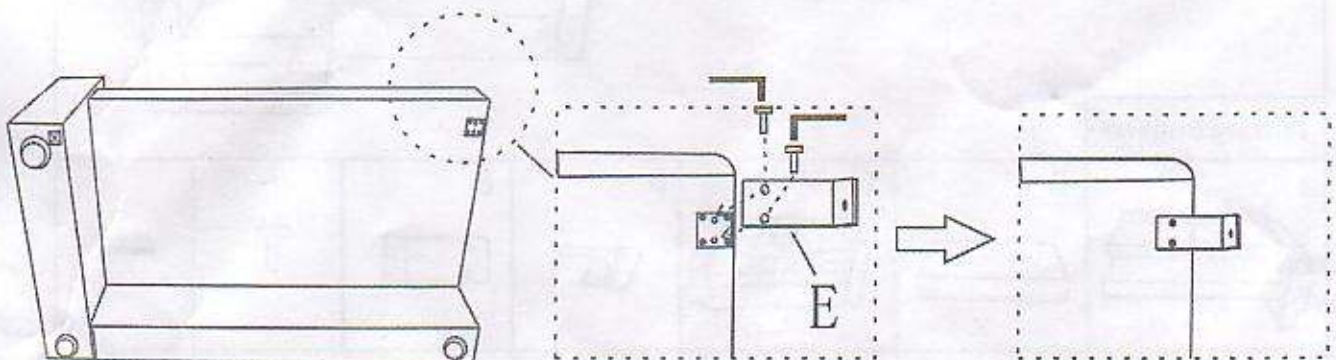
1. Take the 2 Seat (A) and Drawer with ottoman (B) out from carton box.



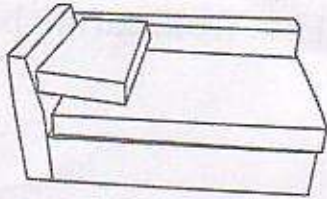
2. Fix metal parts (D) with the supplied 1/2" JCBC Bolts and Allen key to the bottom of Drawer (B) as shown in the following pictures.



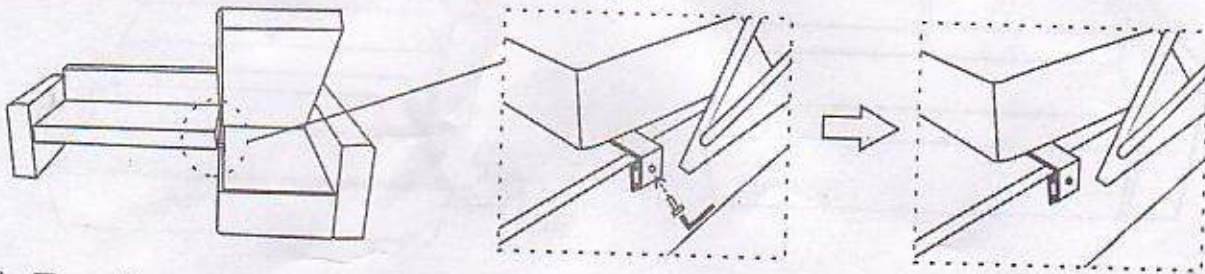
3. Fix metal parts E with the supplied 1/2" JCBC Bolts and Allen key to the bottom of 2 Seat (A) as shown in the following pictures.



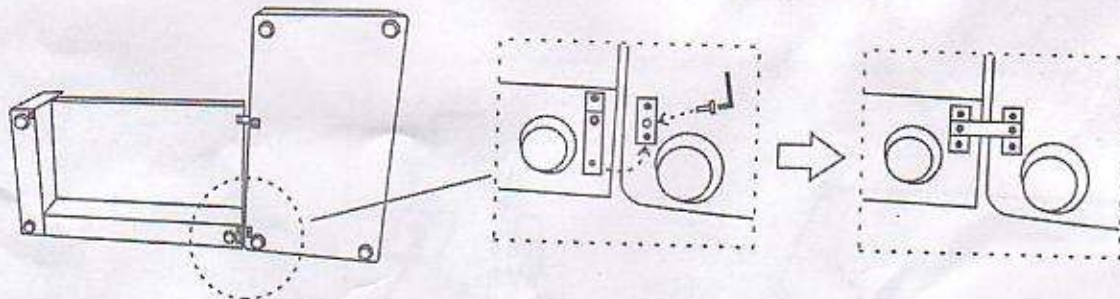
4. Take Chaise (C) out from carton box.



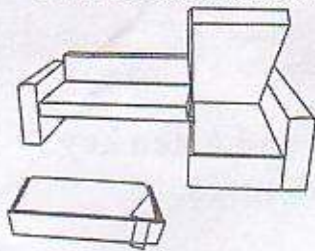
5. Fix metal parts E with 1/2" JCBC Bolts and Allen key to side of chaise (C) as shown in the following picture.



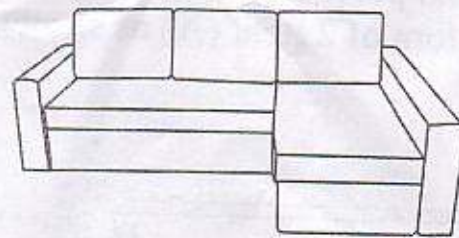
6. Turn the preassembled metal parts from the bottom of 2 Seat (A) to the position showing in the following picture, fix the metal parts to the bottom of Chaise (C) with 1 pc of 1/2" JCBC Bolt and Allen key.



7. Put the drawer with Ottoman (B) into the bottom of seat cushion as shown in the following picture.



8. Assembled sofa.



Parts and Hardware						
A	B	C	D	E		
2 Seat-1pc	Drawer with ottoman -1 pc	Chaise -1 pc	Metal parts -1 pc	Metal parts -1 pc	1/2" JCBC Bolt -6 pcs	Allen key -1 pcs