

# ASSEMBLY INSTRUCTIONS




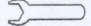
## MODEL : PCH 5454 EXT. TABLE

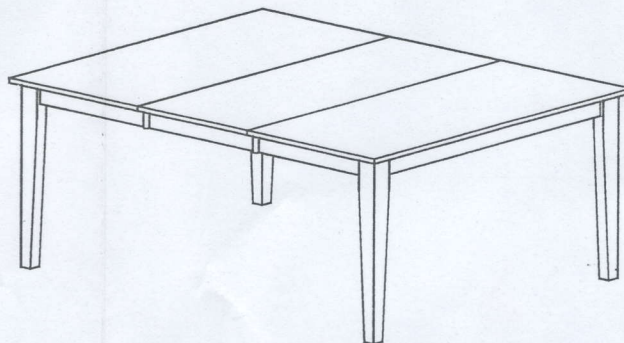
Before you begin, Please follow Assembly Instruction carefully . Then follow them step by step.

### PART LIST

<b>A</b>	TABLE TOP	1 PC
<b>B</b>	TABLE LEG	4 PCS

### HARDWARE LIST

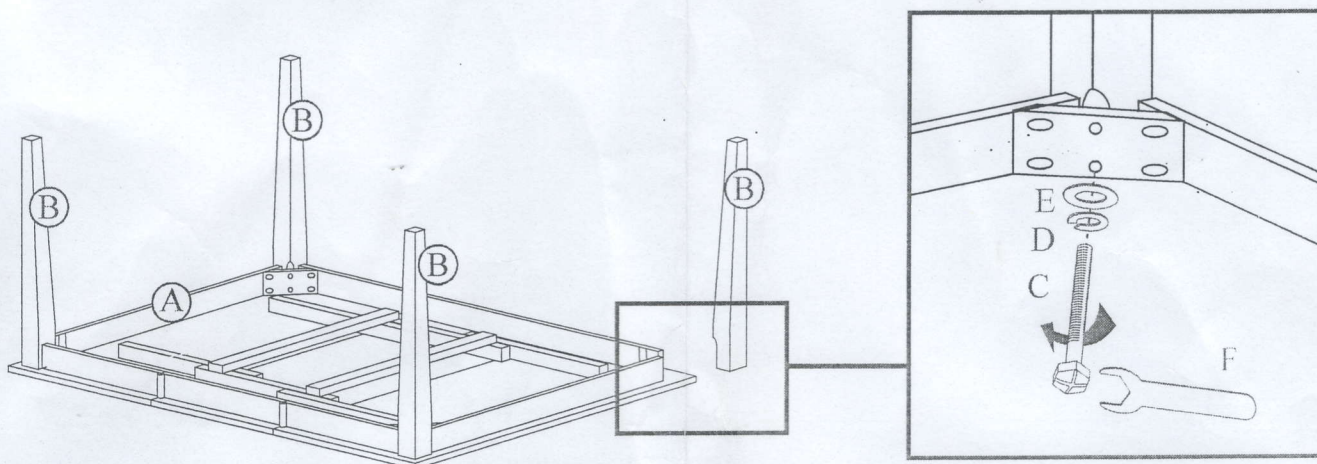
<b>C</b>	HEX BOLT		8 PCS
<b>D</b>	SPRING WASHER		8 PCS
<b>E</b>	FLAT WASHER		8 PCS
<b>F</b>	WRENCH		1 PC



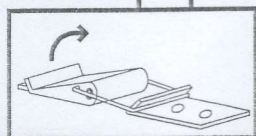
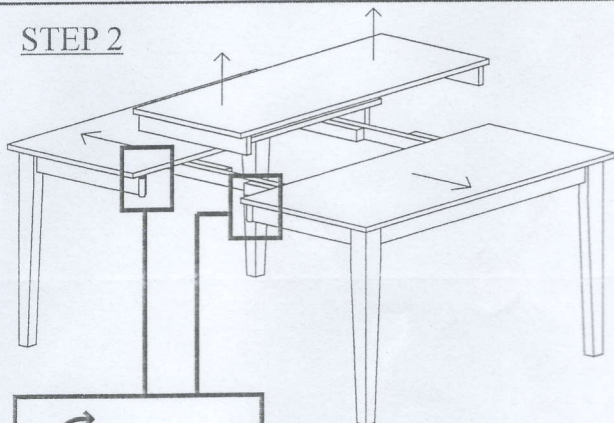
**IMPORTANT NOTE :** PLACE ALL WOODEN PARTS ON A CLEAN AND SMOOTH SURFACE SUCH AS A RUG OR CARPET TO AVOID THE PARTS FROM BEING SCRATCHED.

**FIX THE TABLE LEGS (B) TO THE CORNER BLOCK WITH ALLEN BOLT (C) . SPRING WASHER (D) & FLAT WASHER (E) . THEN TIGHTEN THE ALLEN BOLT (C) BY USING THE ALLEN KEY.**

### STEP 1

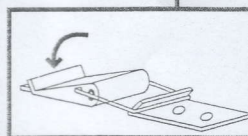
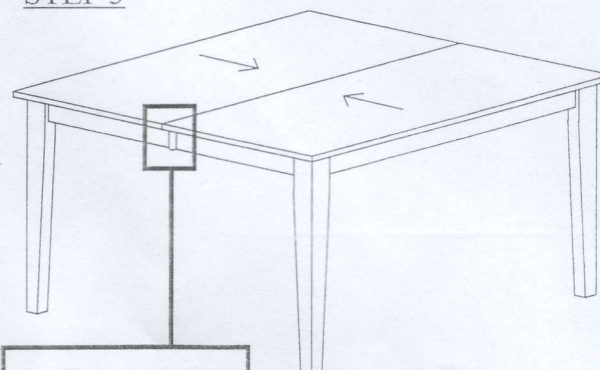


### STEP 2



TO UNLOCK

### STEP 3



TO LOCK