

5 DRAWER CHEST

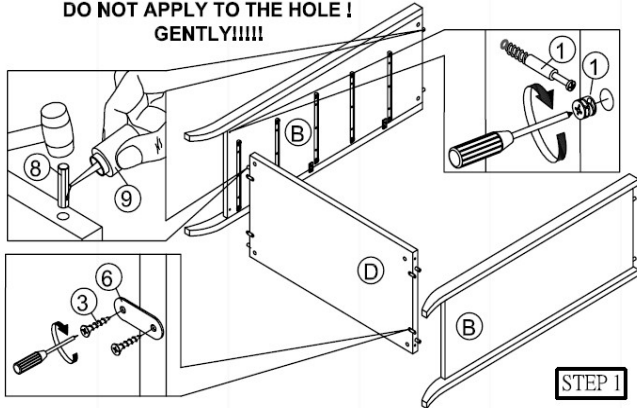


www.hinlim.com

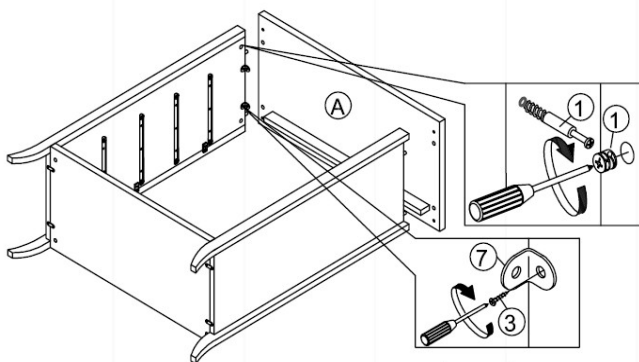
ISO 9001:2000
Certificate No. 2502



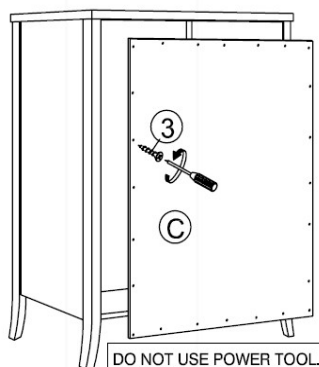
Glue apply to the Wood Dowel into the panel.
DO NOT APPLY TO THE HOLE !
GENTLY!!!!



STEP 1

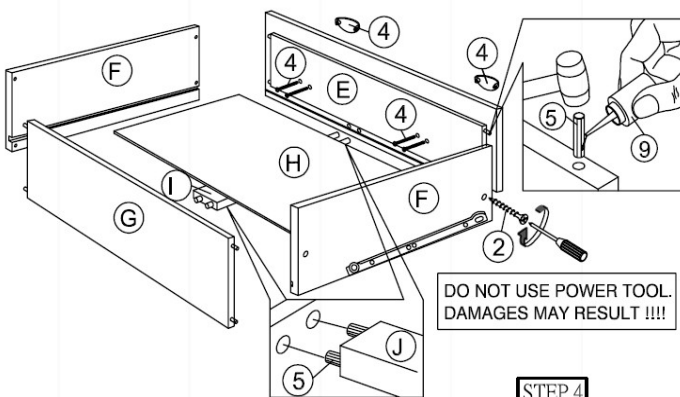


STEP 2



DO NOT USE POWER TOOL.
DAMAGES MAY RESULT !!!!

STEP 3



DO NOT USE POWER TOOL.
DAMAGES MAY RESULT !!!!

STEP 4

PRODUCT DESCRIPTION

Read instruction carefully. Remove all wrapping material , staples and straps from the carton. See Hardware and Furniture Part List for guidance. Be sure you have all parts before you start assembling. Place all wooden furniture part a clean and flat soft surface, such as carpet or rug to prevent from being scratched.

CAUTION :

KEEP ALL HARDWARE PART OUT OF REACH OF CHILDREN.

HARDWARE LIST

ITEM	DESCRIPTION	QTY
1	MINI FIX	8PCS
2	WOOD SCREW 32mm	20PCS
3	WOOD SCREW 16mm	40PCS
4	HANDLE WITH SCREW	10SETS
5	WOOD DOWEL Ø6 x 30mm	60PCS
6	METAL PLATE	4PCS
7	L-BRACKET	4PCS
8	WOOD DOWEL Ø8 x 30mm	8PCS
9	GLUE	1PC

PART LIST

ITEM	DESCRIPTION	QTY
A	TOP PANEL	1PC
B	SIDE PANEL L & R	2PCS
C	BACK PANEL	1PC
D	BOTTOM PANEL	1PC
E	DRAWER FRONT PANEL	5PCS
F	DRAWER SIDE PANEL 5L & 5R	10PCS
G	DRAWER BACK PANEL	5PCS
H	DRAWER BOTTOM PANEL	5PCS
I	DRAWER SUPPORT RAIL	5PCS