

# A-172-BH-10

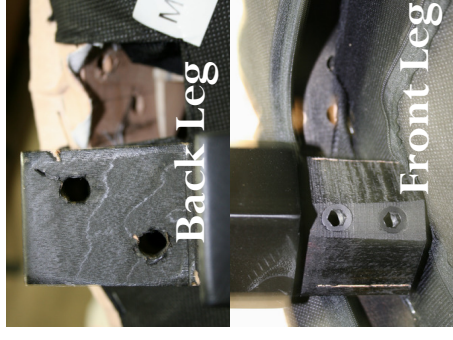


\*Notes that the legs and hardware are tucked away in the back of the seats, zipped in a hidden compartment.



There are two types of legs for this product:

1. Back chair legs have diagonal alignments with white floor protector.
2. Front chair legs have vertical alignments with black floor protector.



To install the legs, please find the hardware and tools inside the red pouch:

1. Insert the leg into the seat, adjust so that the holes are aligned.
2. Two bolts and washers are needed for each leg.
3. Attach the washer into the bolt, insert the bolt into the hole, tighten with the L shape hex key.
4. Repeat the steps for all legs.