

Read this instruction carefully. See hardware and furniture part list for guidance. Be sure all parts are complete, before you assemble. Place all wooden furniture parts on a clean and flat soft surface to prevent from being scratched. Follow the figure to start assembling.

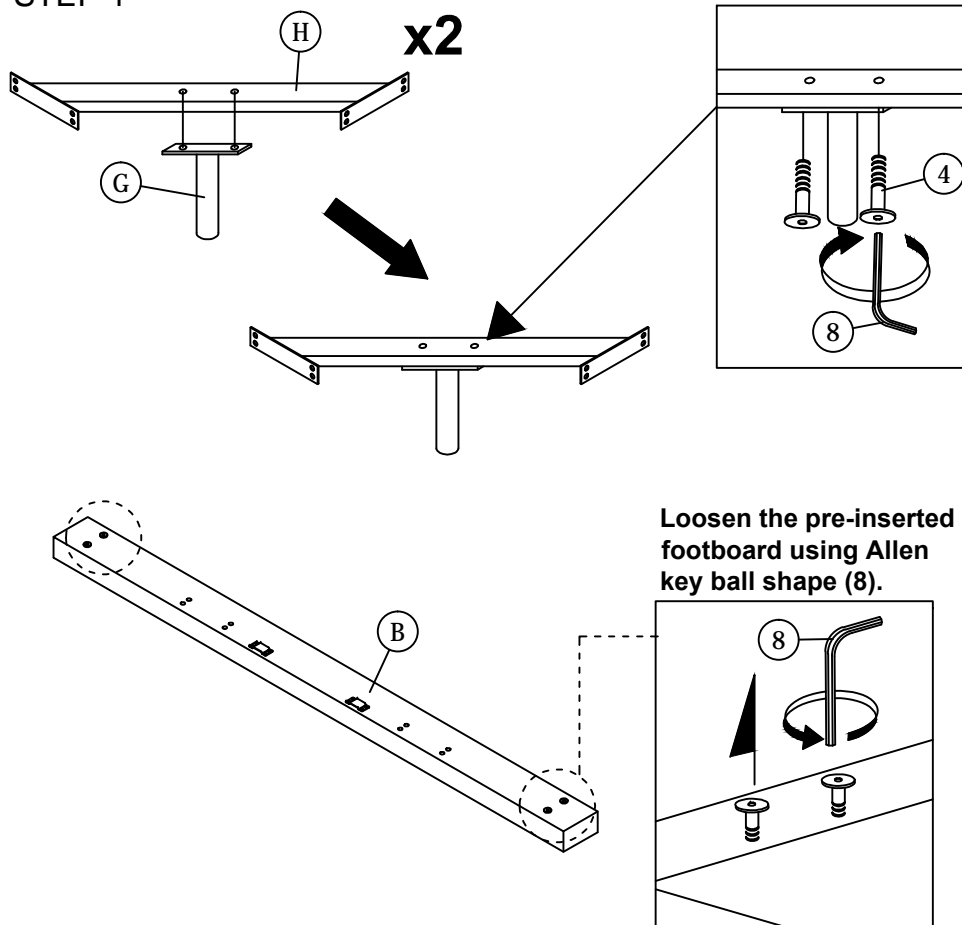
CAUTIONS : 1. Do not FULLY - TIGHTEN the nut or nut bolt until all nut or bolt is ready assembled.
2. Do not OVER - TIGHTEN the nut or bolt to avoid causing damages to the thread.
3. Keep all hardware parts out of reach of children.

NOTE : THE LIST AND QUANTITY SHOWN ARE FOR 1 UNIT ASSEMBLY.
Tool needed : Screwdriver (not provider).

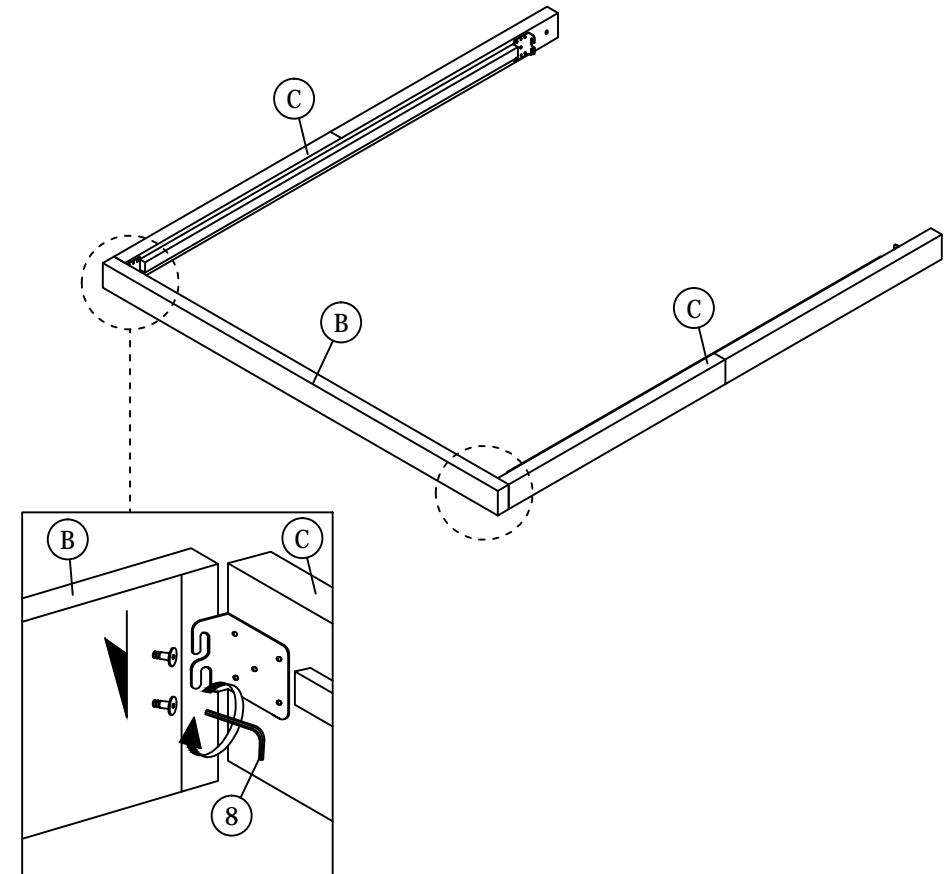
PART LIST			
ITEM	DESCRIPTION	BOX	QTY
A	HEADBOARD	1	1 PC
B	FOOTBOARD	2	1 PC
C	SIDE RAIL	2	2 PCS
D	CENTER RAIL	2	2 PCS
E	CENTER SUPPORT LEG	2	6 PCS
F	BED SLAT	1	1 SET
G	METAL LEG	3	2 PCS
H	METAL SUPPORT	3	2 PCS
I	HEADBOARD SUPPORT LEG	3	2 PCS

HARDWARE LIST (BOX : 2)		
ITEM	DESCRIPTION	QTY
1	JCBB BOLT M8 x 60mm	6 PCS
2	JCBB BOLT M8 x 40mm	16 PCS
3	JCBB BOLT M8 x 20mm	4 PCS
4	JCBB BOLT M8 x 20mm (BLACK)	4 PCS
5	M8 FLAT WASHER	22 PCS
6	M8 SPRING WASHER	22 PCS
7	WOOD SCREW M4 x 32mm	12 PCS
8	M5 ALLEN KEY (BALL SHAPE)	1 PC

STEP 1



STEP 2



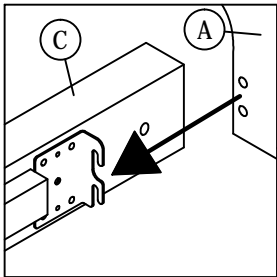
DO NOT fully tighten

ASSEMBLY INSTRUCTIONS

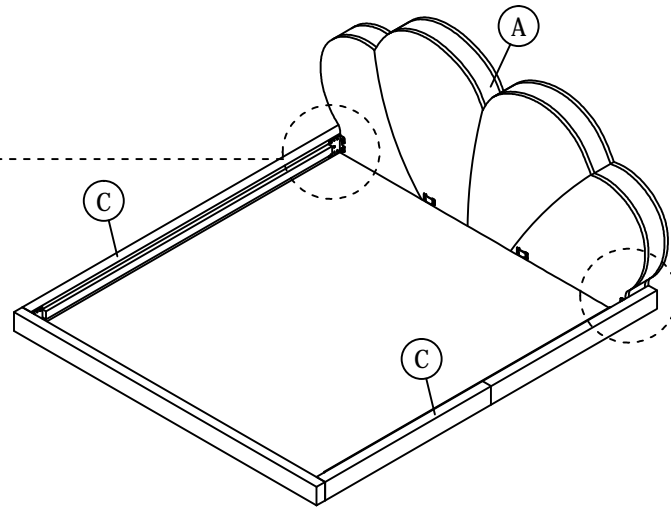
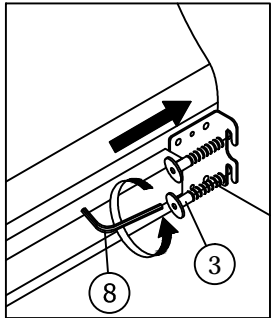
2 of 4

STEP 3

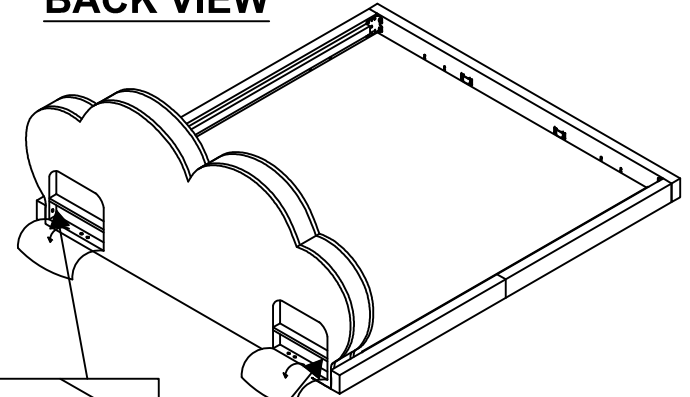
STEP 3.1



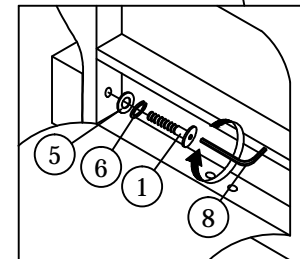
STEP 3.2



BACK VIEW

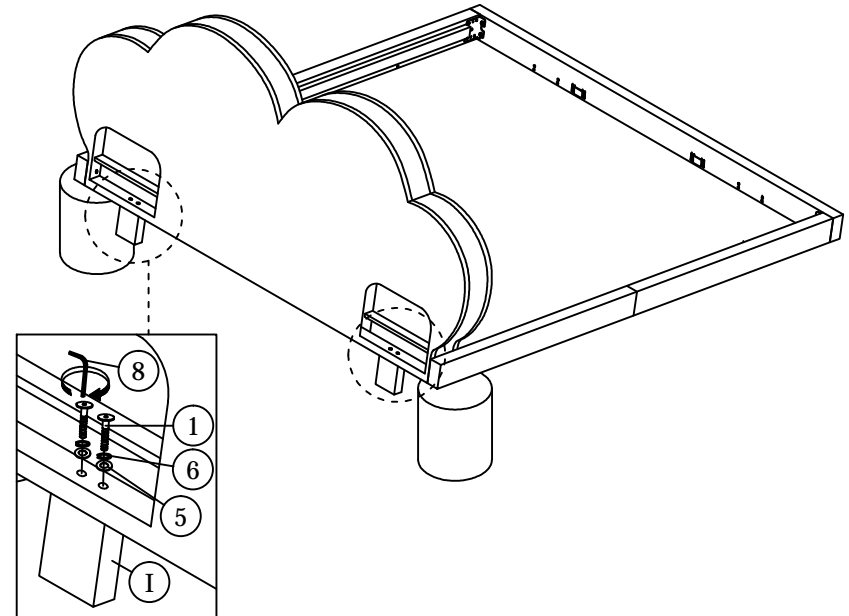
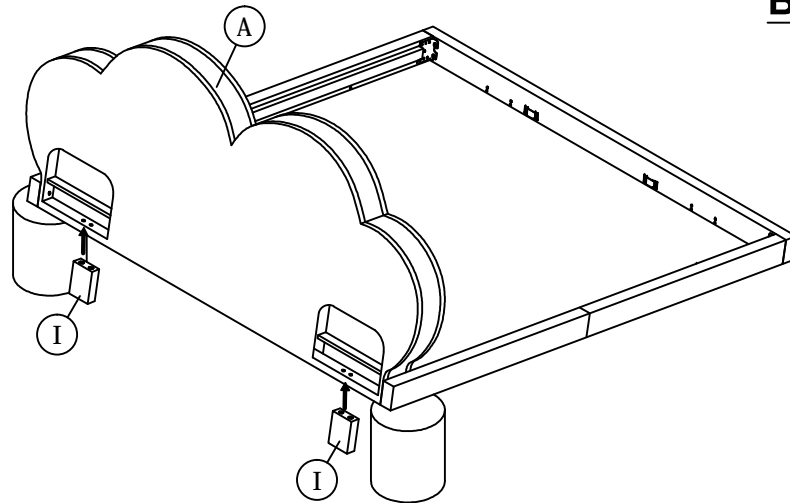


STEP 3.3



STEP 4

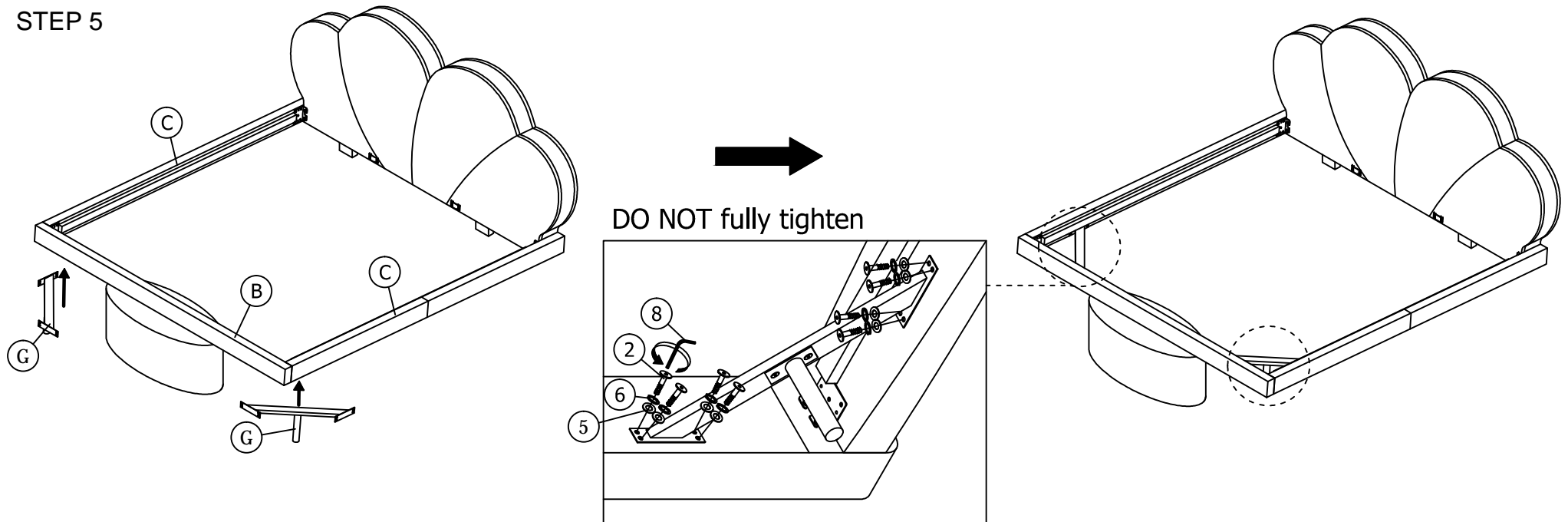
BACK VIEW



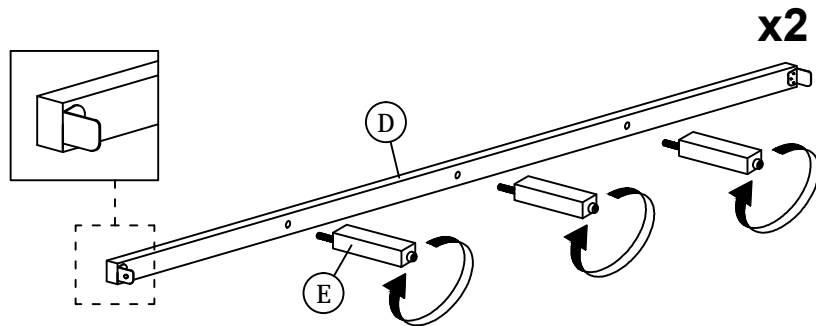
ASSEMBLY INSTRUCTIONS

3 of 4

STEP 5

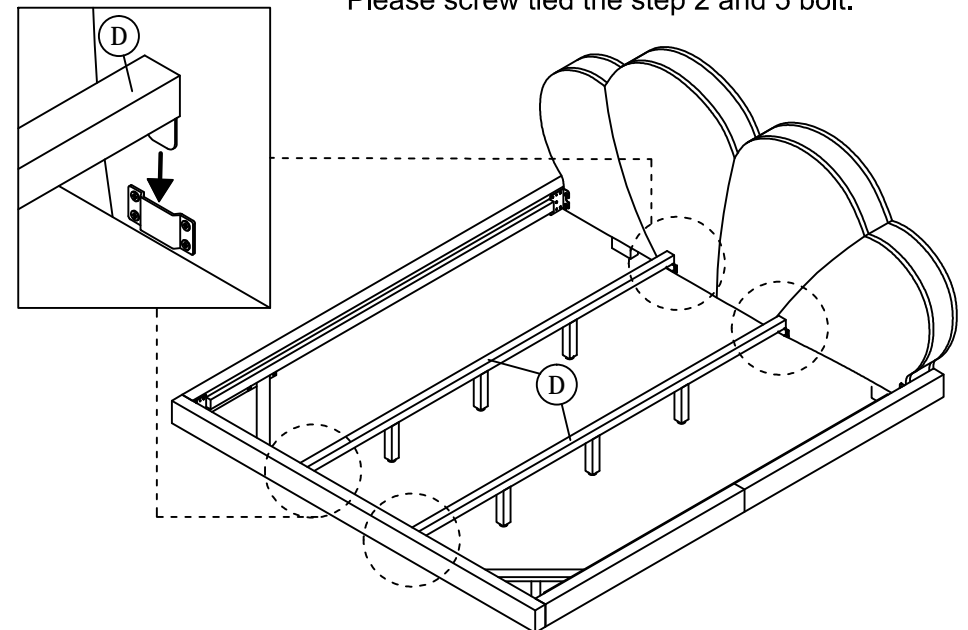


STEP 6



STEP 7

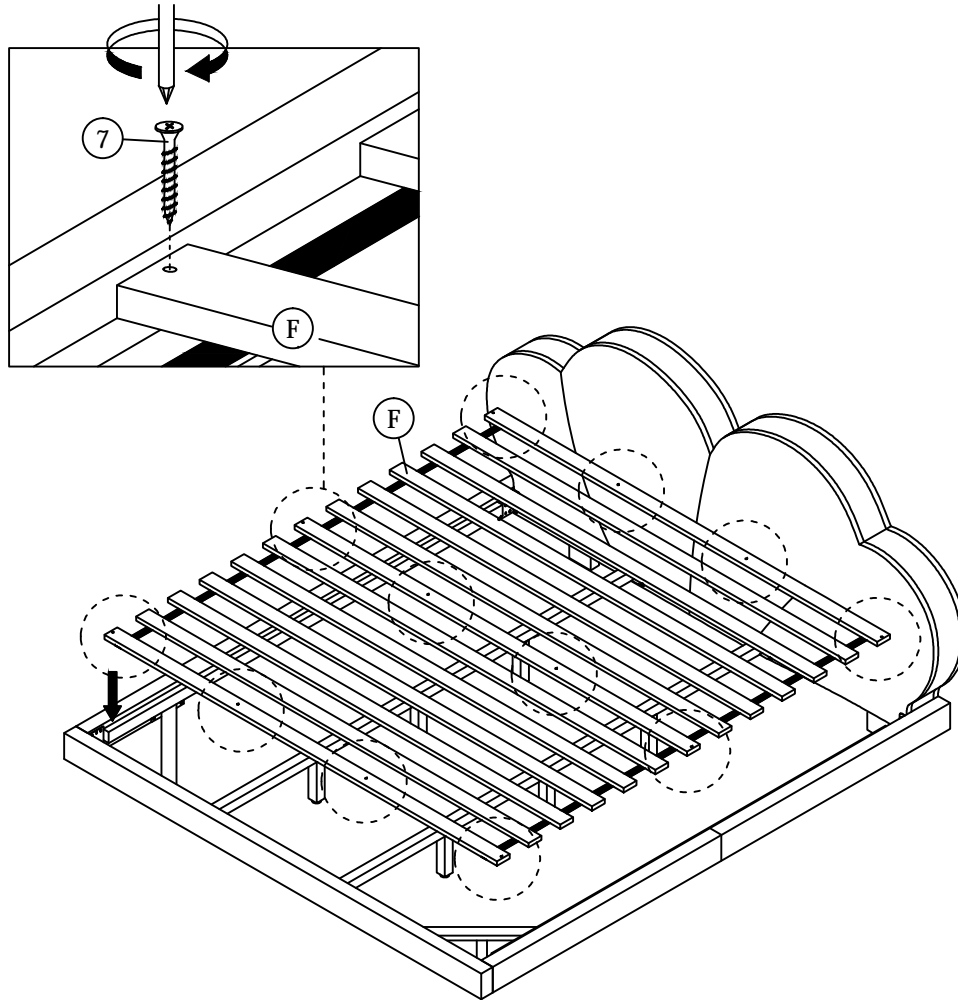
****Finish step 7,
Please screw tied the step 2 and 5 bolt.**



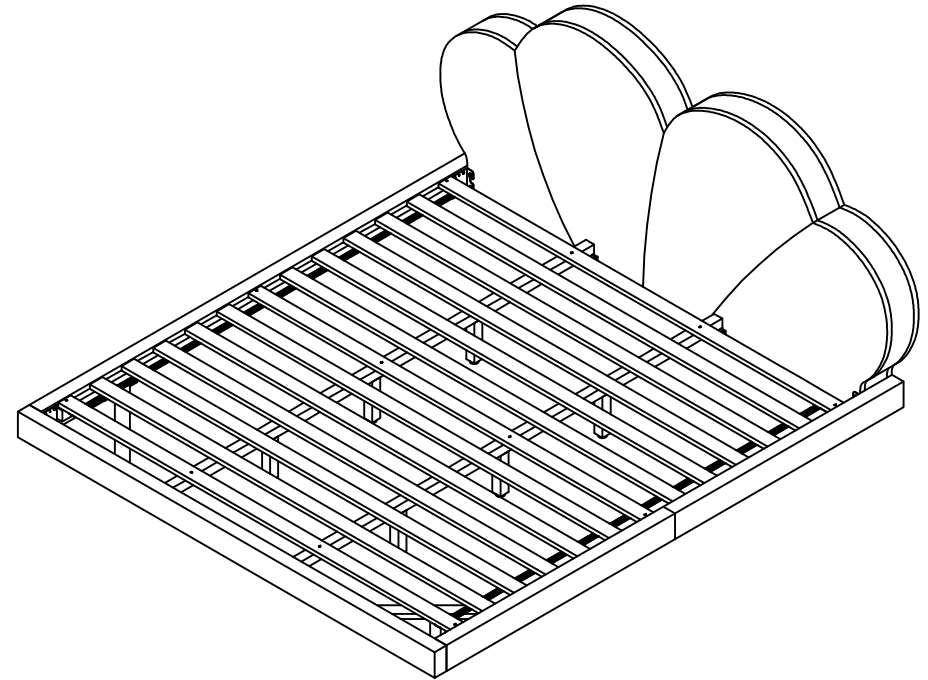
ASSEMBLY INSTRUCTIONS

4 of 4

STEP 8



STEP 9



*** When moving the bed position, the center support legs must be adjust to be straight to avoid any broken problem.**