

Read this instruction carefully. See hardware and furniture part list for guidance. Be sure all parts are complete, before you assemble. Place all wooden furniture parts on a clean and flat soft surface to prevent from being scratched. Follow the figure to start assembling.

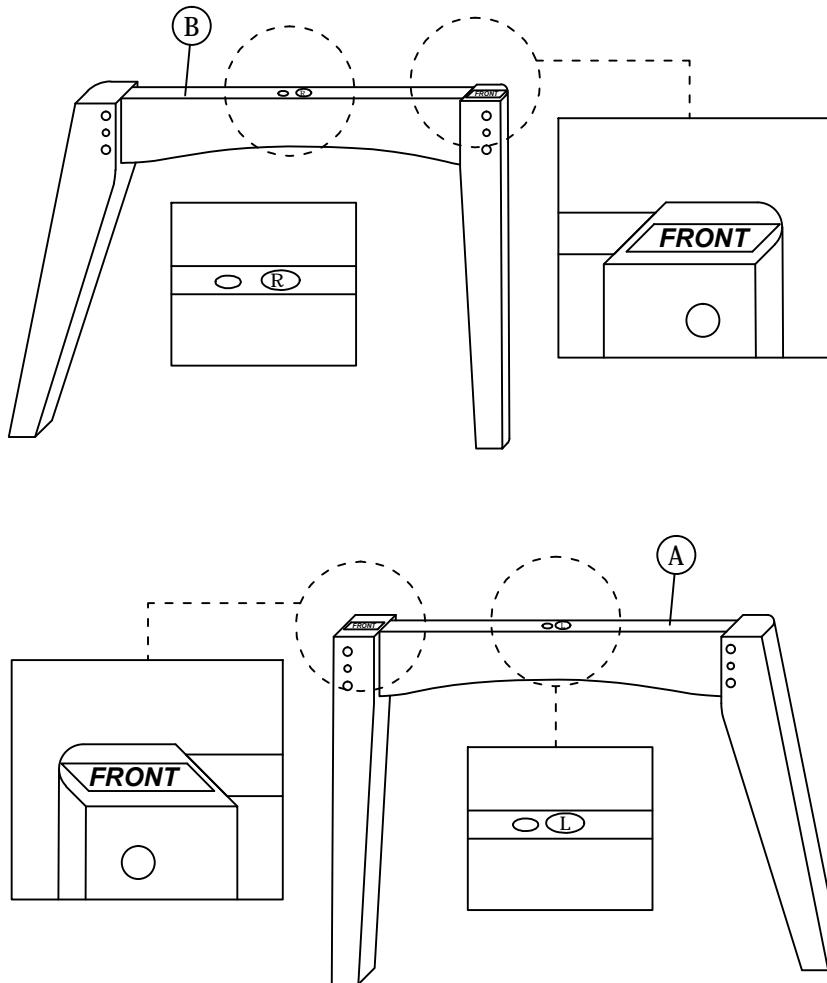
**CAUTIONS :** 1. Do not FULLY - TIGHTEN the nut or nut bolt until all nut or bolt is ready assembled.  
 2. Do not OVER - TIGHTEN the nut or bolt to avoid causing damages to the thread.  
 3. Keep all hardware parts out of reach of children.

**NOTE :** THE LIST AND QUANTITY SHOWN ARE FOR 1 UNIT ASSEMBLY.  
 Tool needed : Screwdriver & Rubber Mallet (not provided).

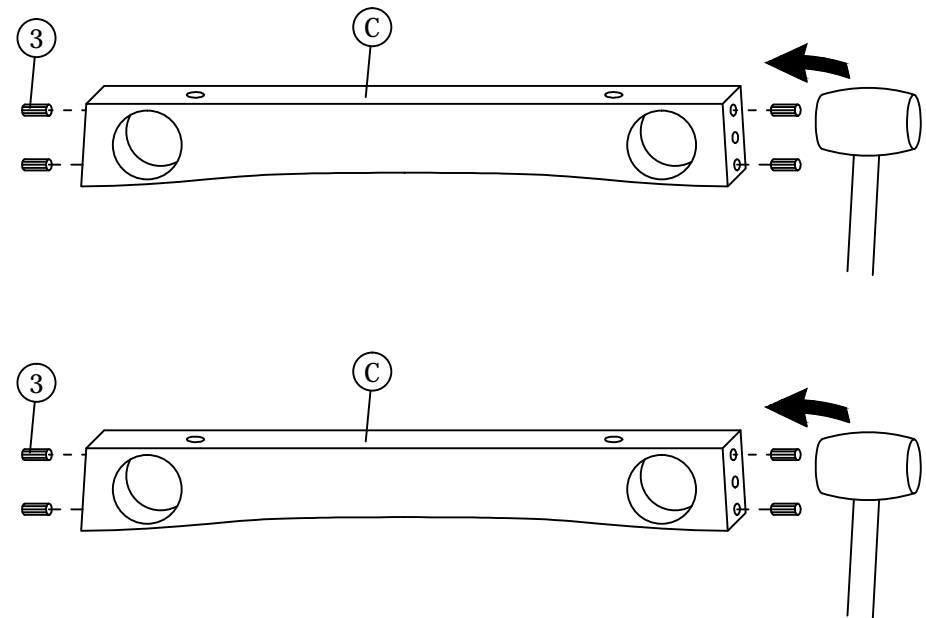
PART LIST		
ITEM	DESCRIPTION	QTY
A	CHAIR LEG (L)	1 PC
B	CHAIR LEG (R)	1 PC
C	SUPPORT RAIL	2 PCS
D	CHAIR	1 PC

HARDWARE LIST			
ITEM	DESCRIPTION		QTY
1	JCBC Bolt M6 x 45mm		4 PCS
2	WOOD SCREW M4 x 45mm		6 PCS
3	WOOD DOWEL M8 x 30mm		8 PCS
4	M6 SPRING WASHER		4 PCS
5	M4 ALLEN KEY (BALL SHAPE)		1 PC

## STEP 1

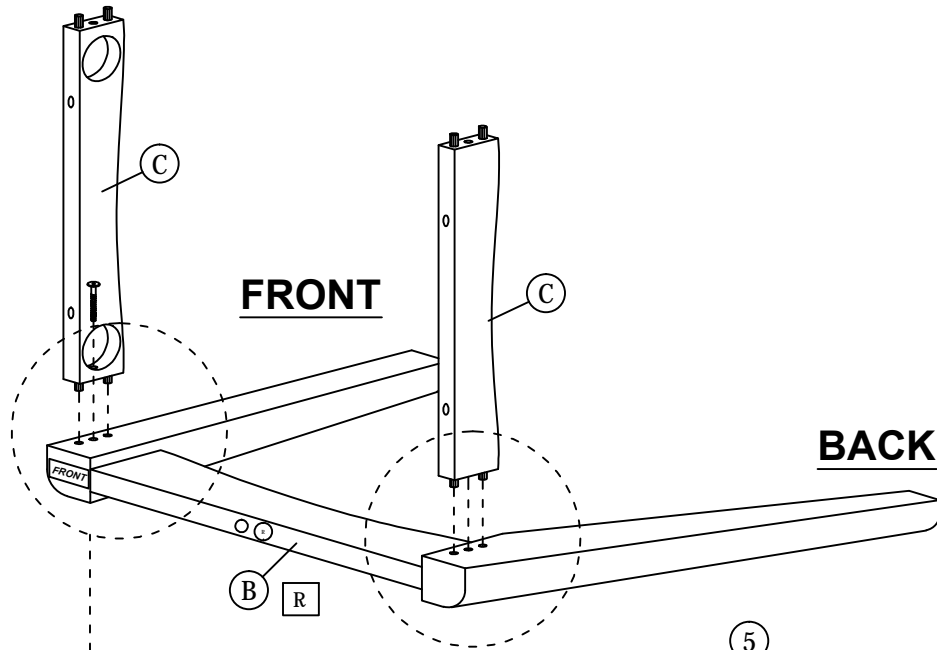


## STEP 2

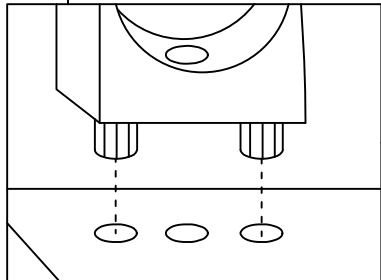


# ASSEMBLY INSTRUCTIONS

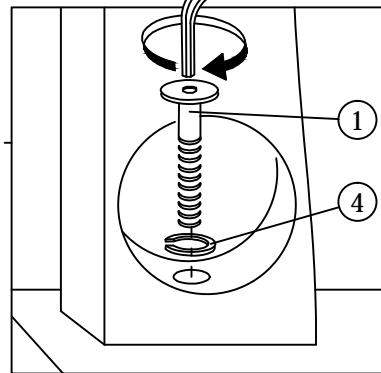
## STEP 3



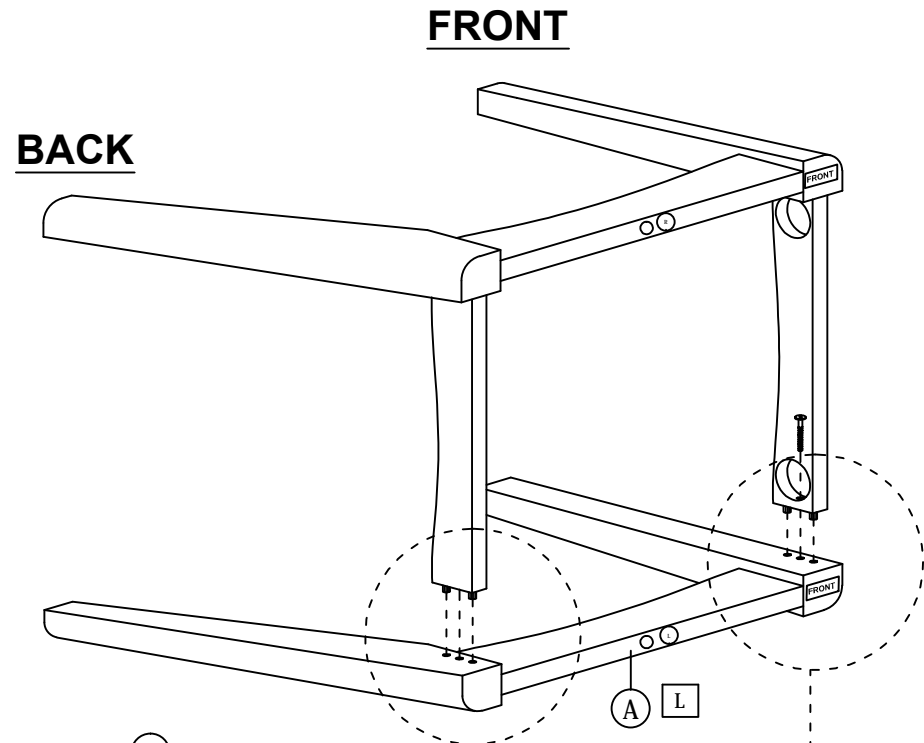
### STEP 3.1



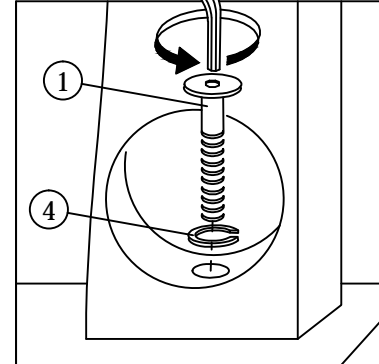
### STEP 3.2



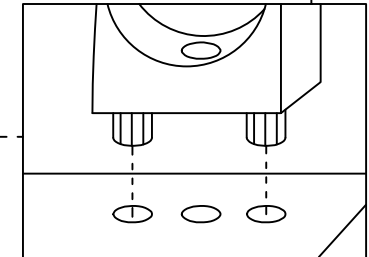
## STEP 4



### STEP 4.2



### STEP 4.1

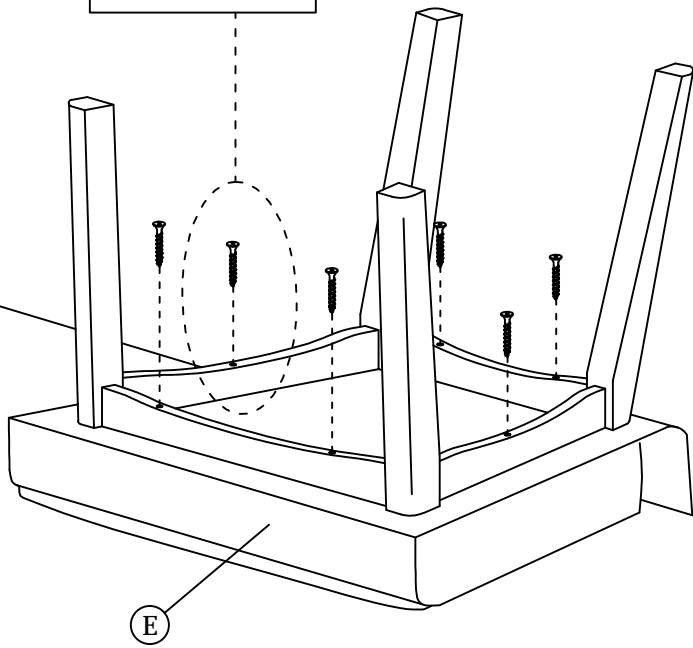
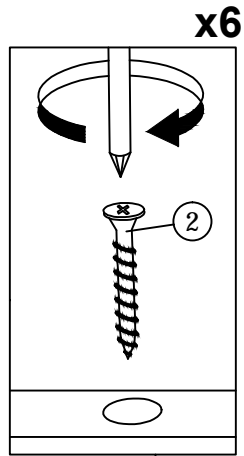


# ASSEMBLY INSTRUCTIONS

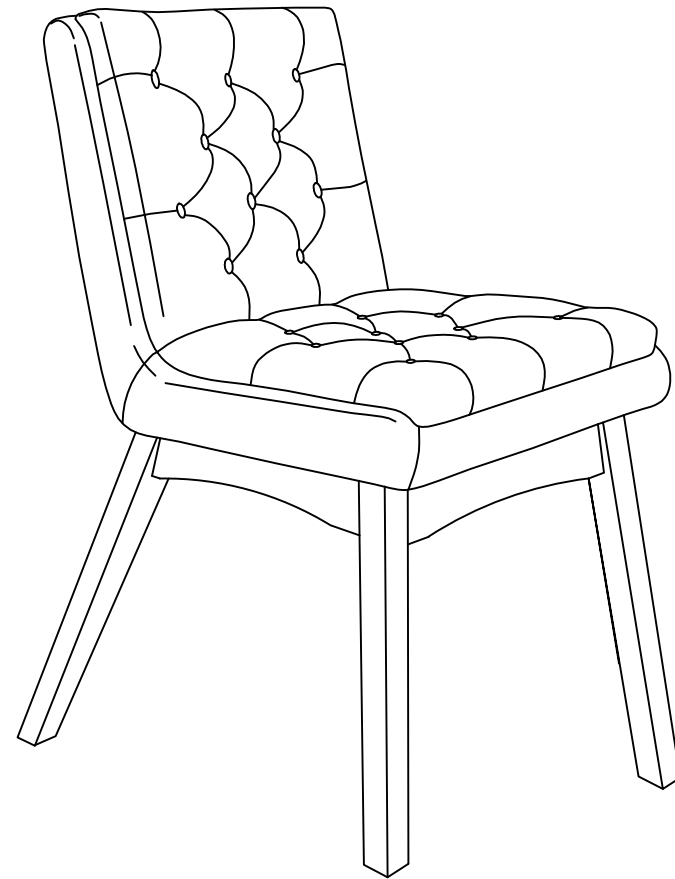
3 OF 3

## STEP 5

**Note : Follow the line drawing to assemble the chair leg.**



## STEP 6




# ASSEMBLY INSTRUCTIONS

Read this instruction carefully. See hardware and furniture part list for guidance. Be sure all parts are complete, before you assemble. Place all wooden furniture parts on a clean and flat soft surface to prevent from being scratched. Follow the figure to start assembling.

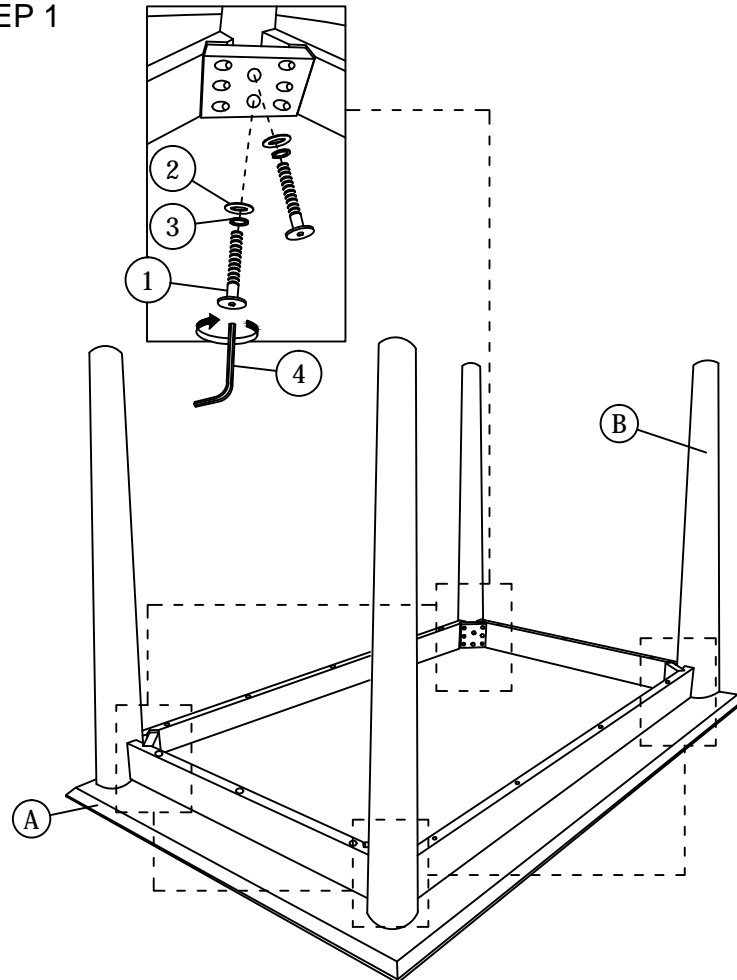
**CAUTIONS :** 1. Do not FULLY - TIGHTEN the nut or nut bolt until all nut or bolt is ready assembled.  
2. Do not OVER - TIGHTEN the nut or bolt to avoid causing damages to the thread.  
3. Keep all hardware parts out of reach of children.

**NOTE :** THE LIST AND QUANTITY SHOWN ARE FOR 1 UNIT ASSEMBLY.

PART LIST		
ITEM	DESCRIPTION	QTY
A	TABLE TOP	1 PC
B	LEGS	4 PCS

PART LIST		
ITEM	DESCRIPTION	QTY
1	JCBC BOLT M6 x 60mm 	8 PCS
2	M6 FLAT WASHER 	8 PCS
3	M6 SPRING WASHER 	8 PCS
4	M4 ALLEN KEY 	1 PC

## STEP 1



## STEP 2

