




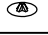
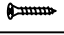







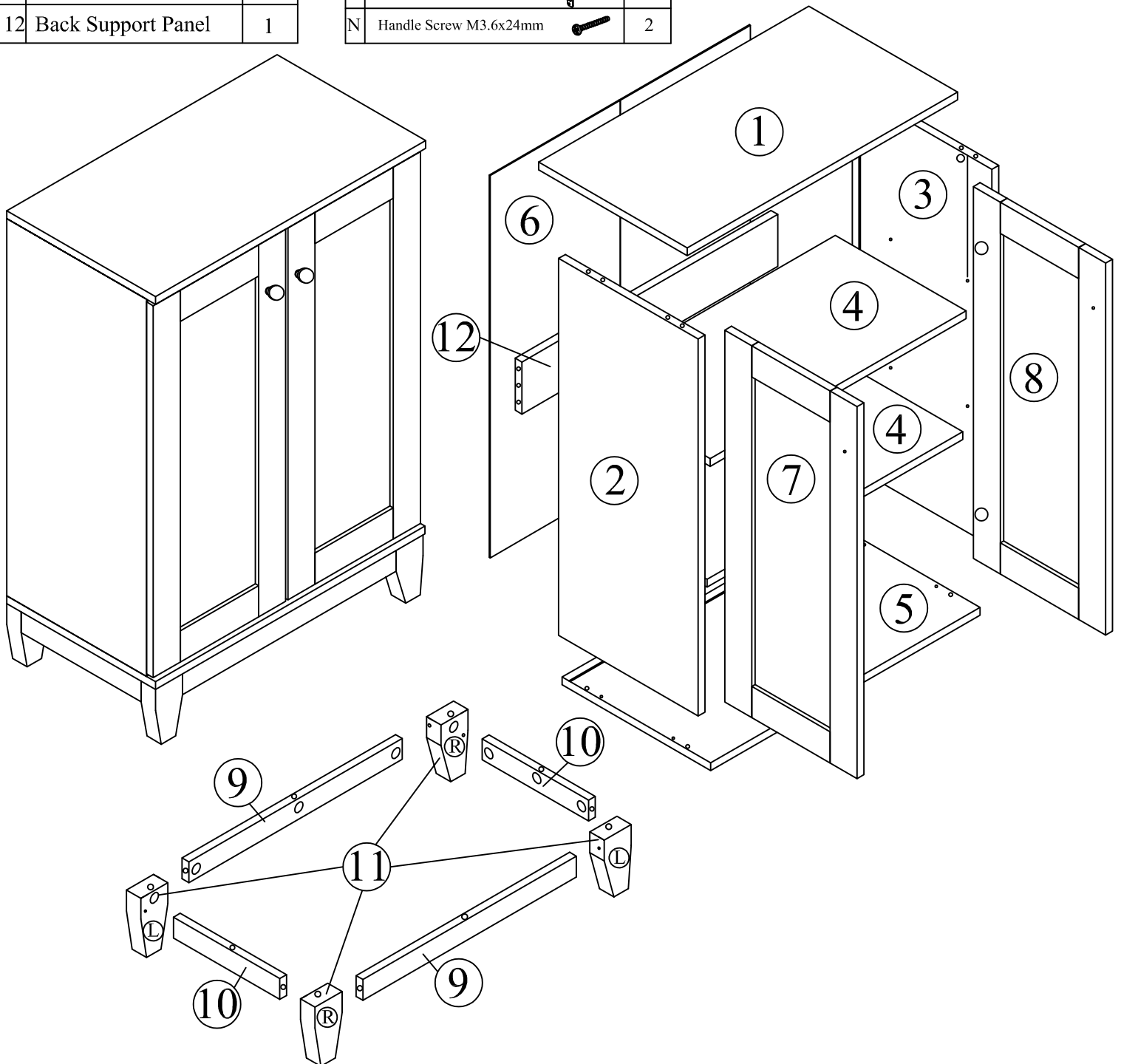


# Assembly Instructions

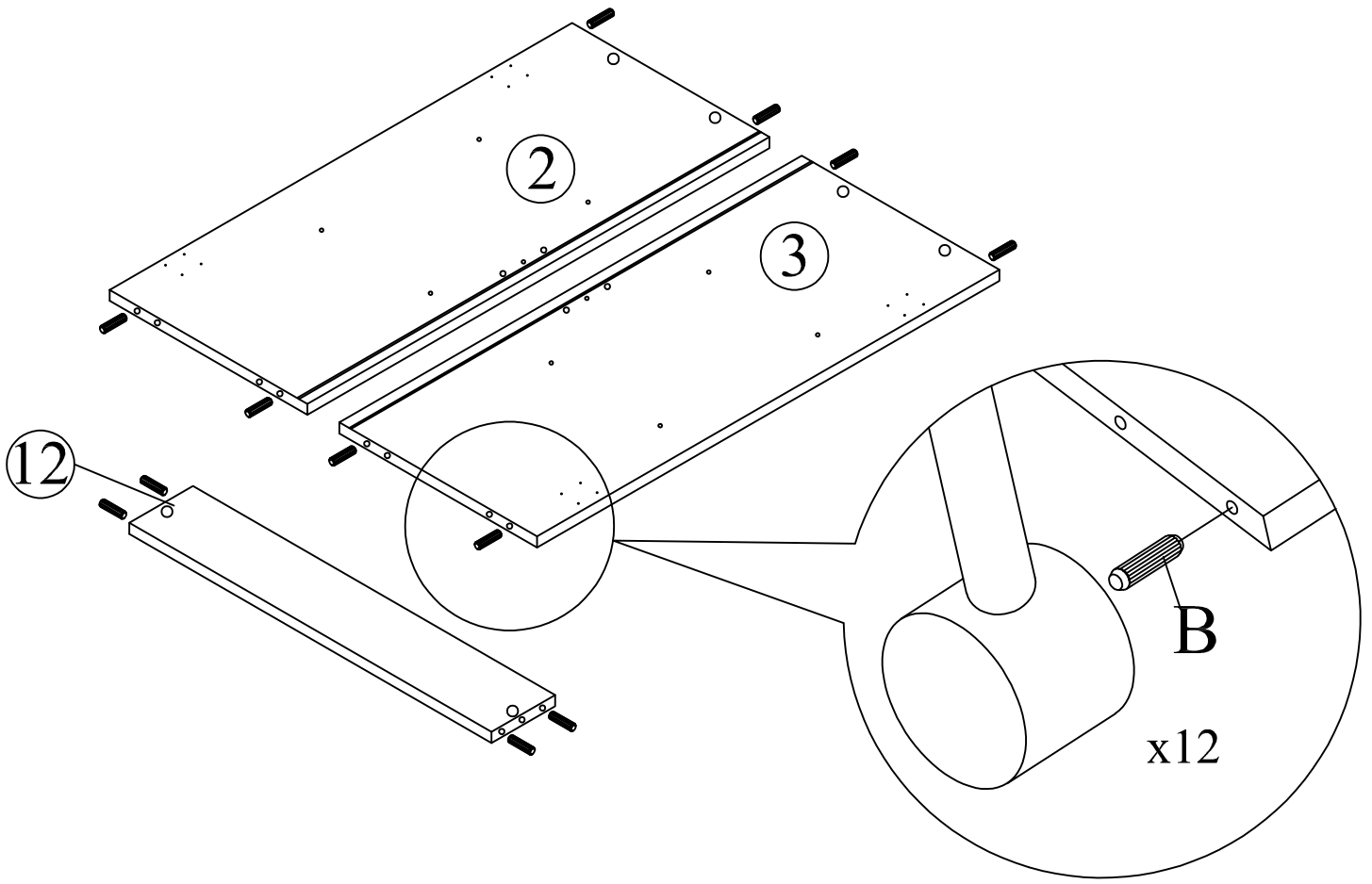
Model: MPC 8017

Part List		QTY
1	Top Panel	1
2	Left Side Panel	1
3	Right Side Panel	1
4	Shelf Panel	2
5	Bottom Panel	1
6	Back Panel	1
7	Left Door Panel	1
8	Right Door Panel	1
9	Front/Back Bar Panel	2
10	Side Bar Panel	2
11	Legs Left/Right	4
12	Back Support Panel	1

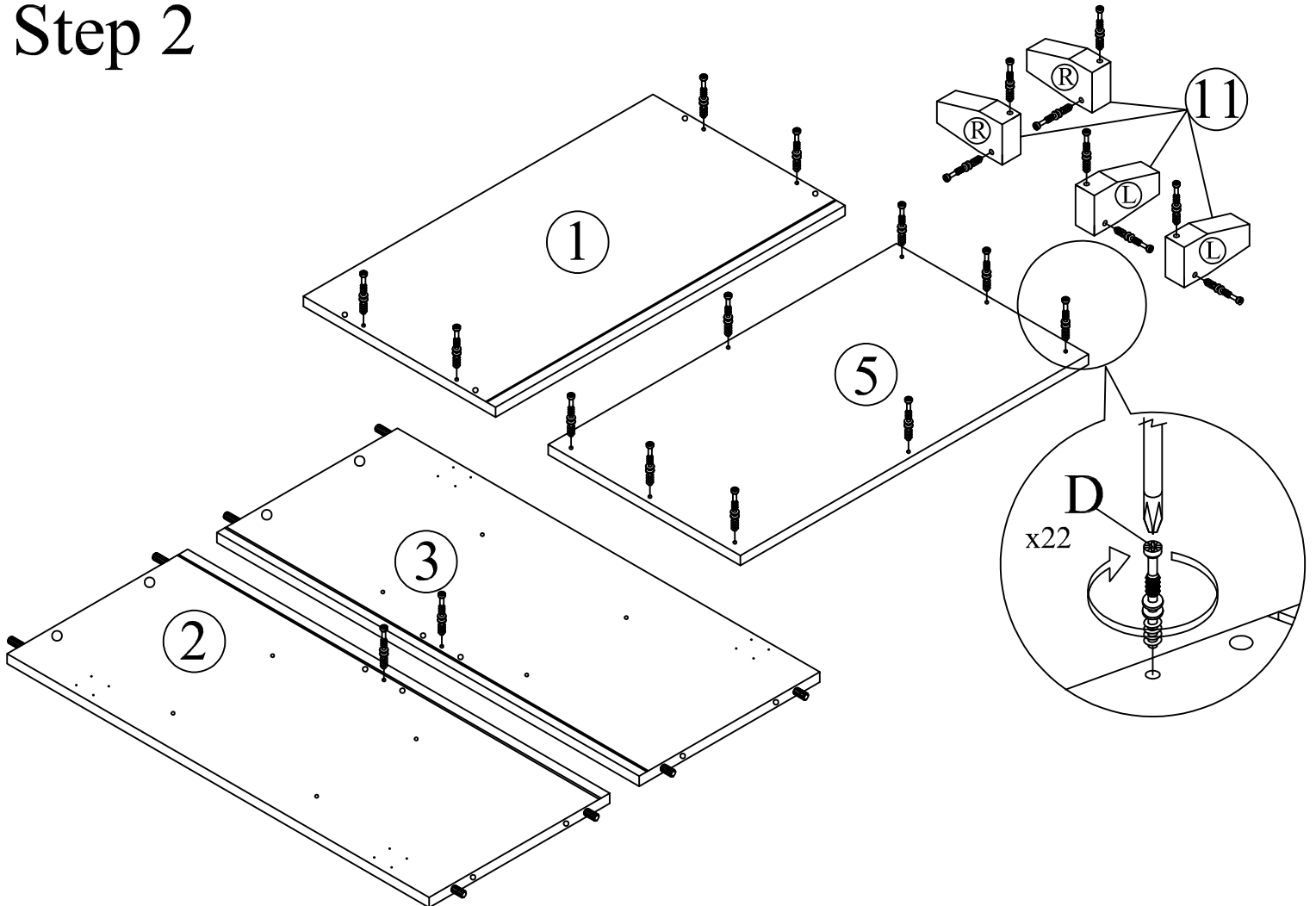
Hardware		QTY
A	Allen Key M4 	1
B	Dowel 	12
C	JCBC W Screw M6x40 	4
D	Mini Fix Bolt 	22
E	Mini Fix Housing 	22
F	Mini Fix Cap 	22
G	CSK Screw M3.5x16mm 	36
H	Shelf Support Metal 	8
I	L Bracket 	4
J	Handle 	2
K	Stud 	4
L	White Nail 	4
M	Hinges 	4
N	Handle Screw M3.6x24mm 	2



# Step 1



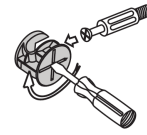
# Step 2



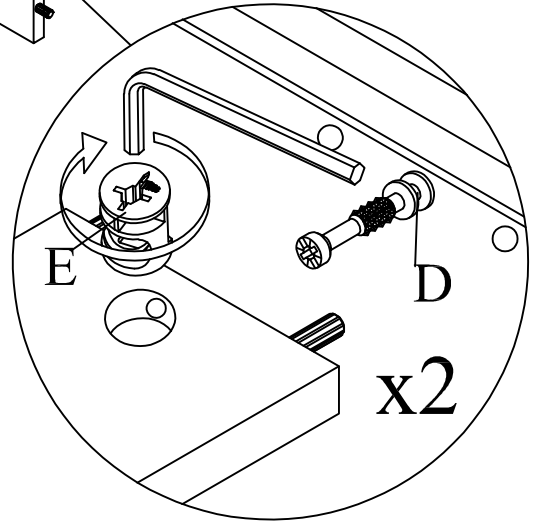
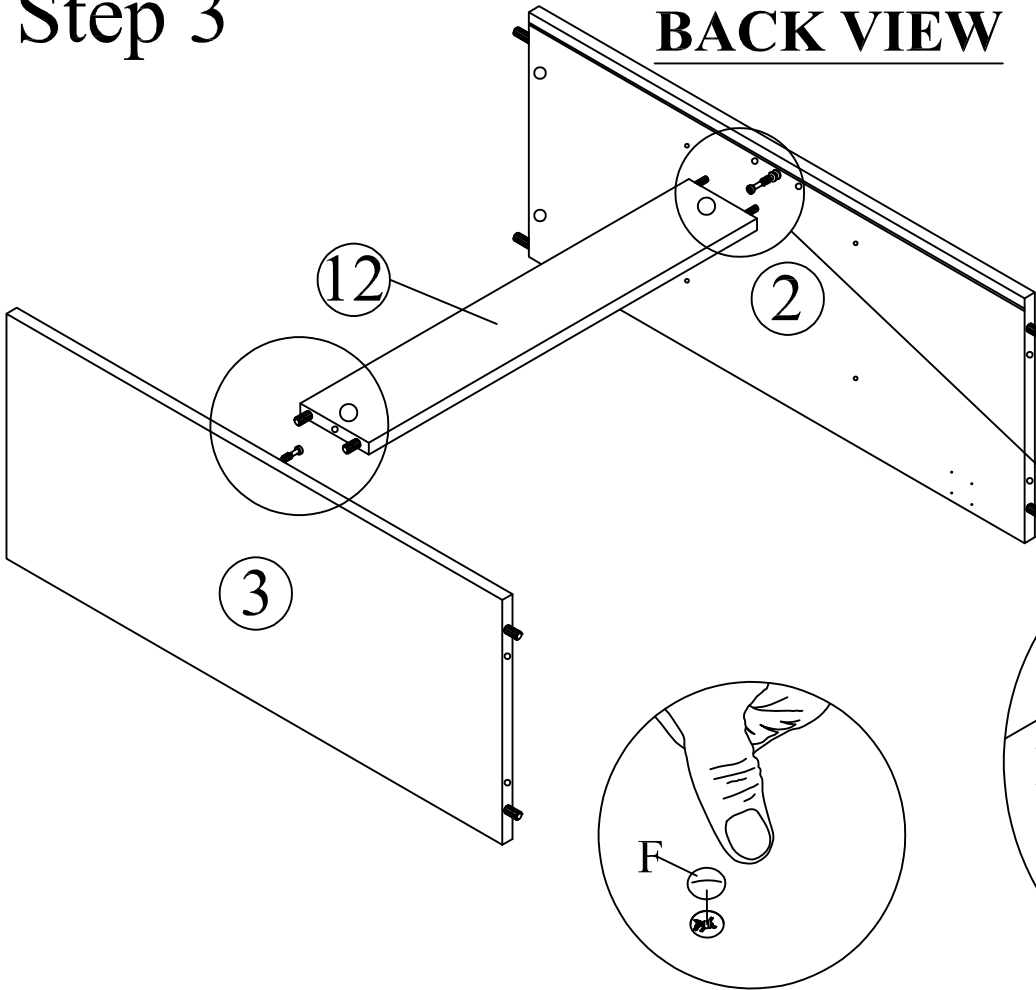
# Step 3

## BACK VIEW

This is how a mini fix works...



The head of the mini fix housing goes into the open mouth of the mini fix bolt. You then turn the mini fix housing so it tightens over the mini fix bolt.

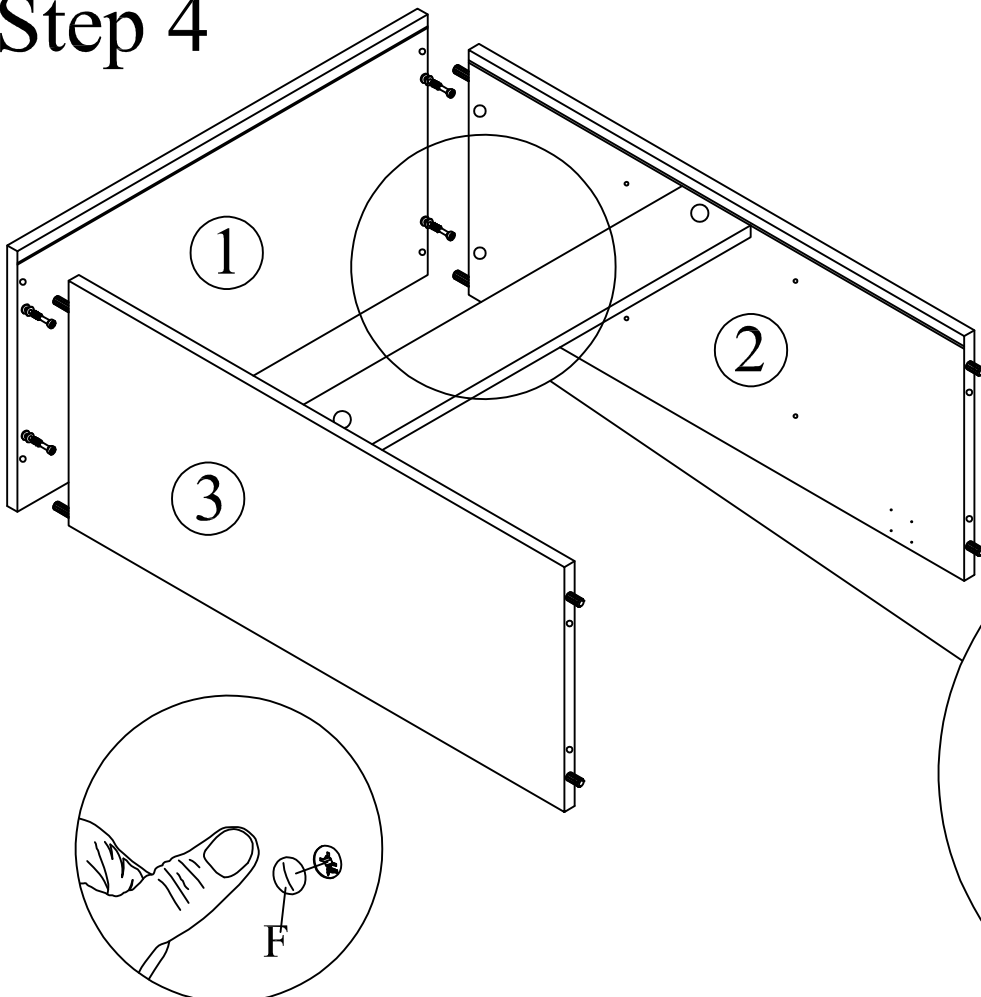
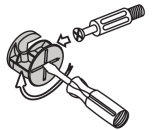


*\*Attach Minifix Cap as shown.*

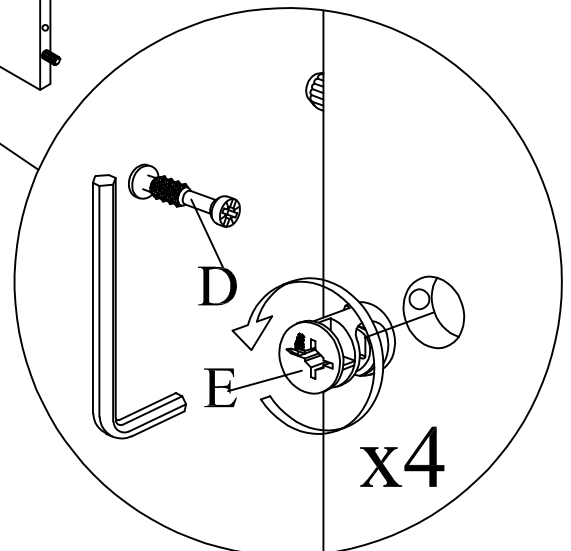
# Step 4

This is how a mini fix works...

The head of the mini fix housing goes into the open mouth of the mini fix bolt. You then turn the mini fix housing so it tightens over the mini fix bolt.



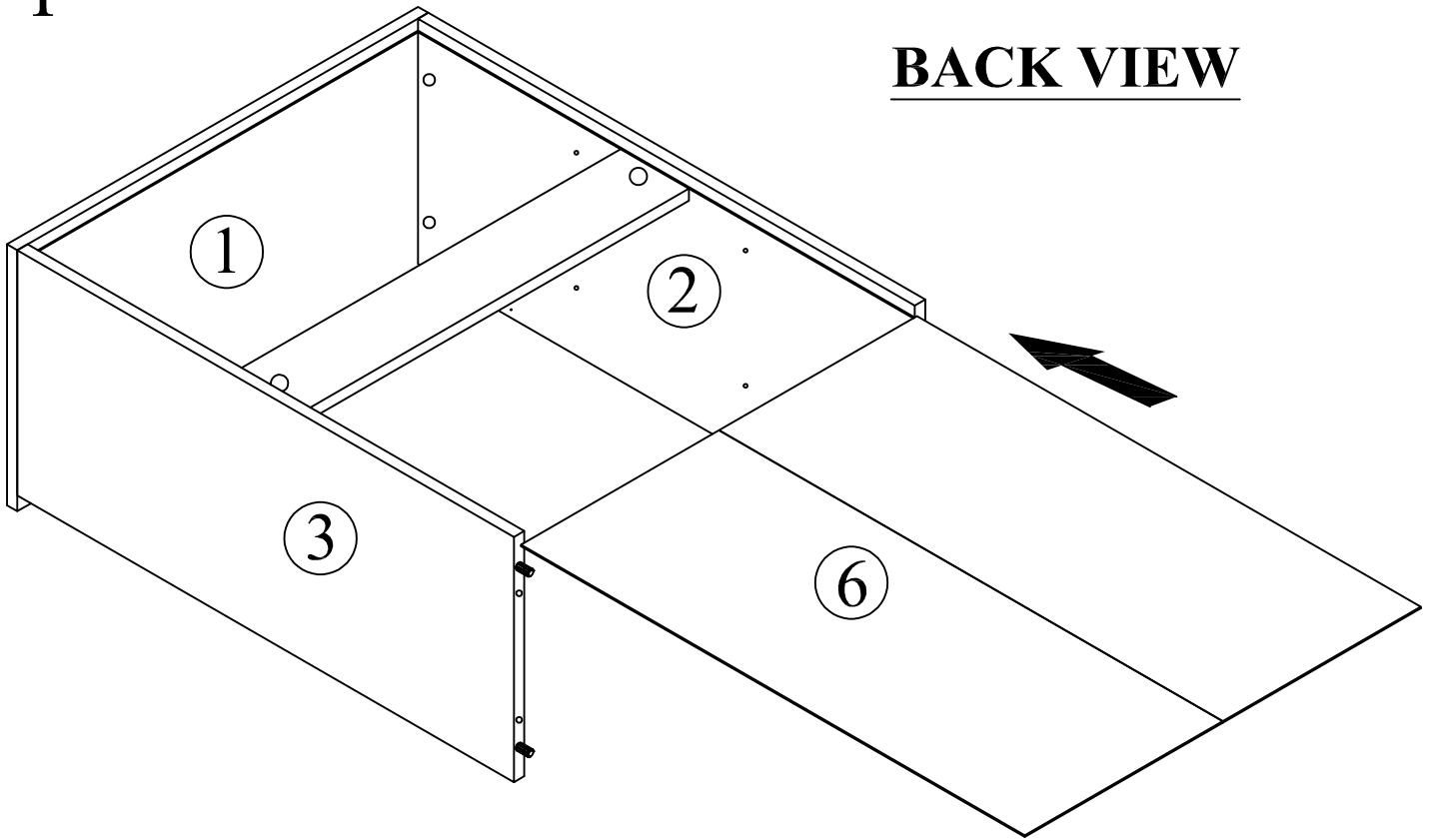
## BACK VIEW



*\*Attach Minifix Cap as shown.*

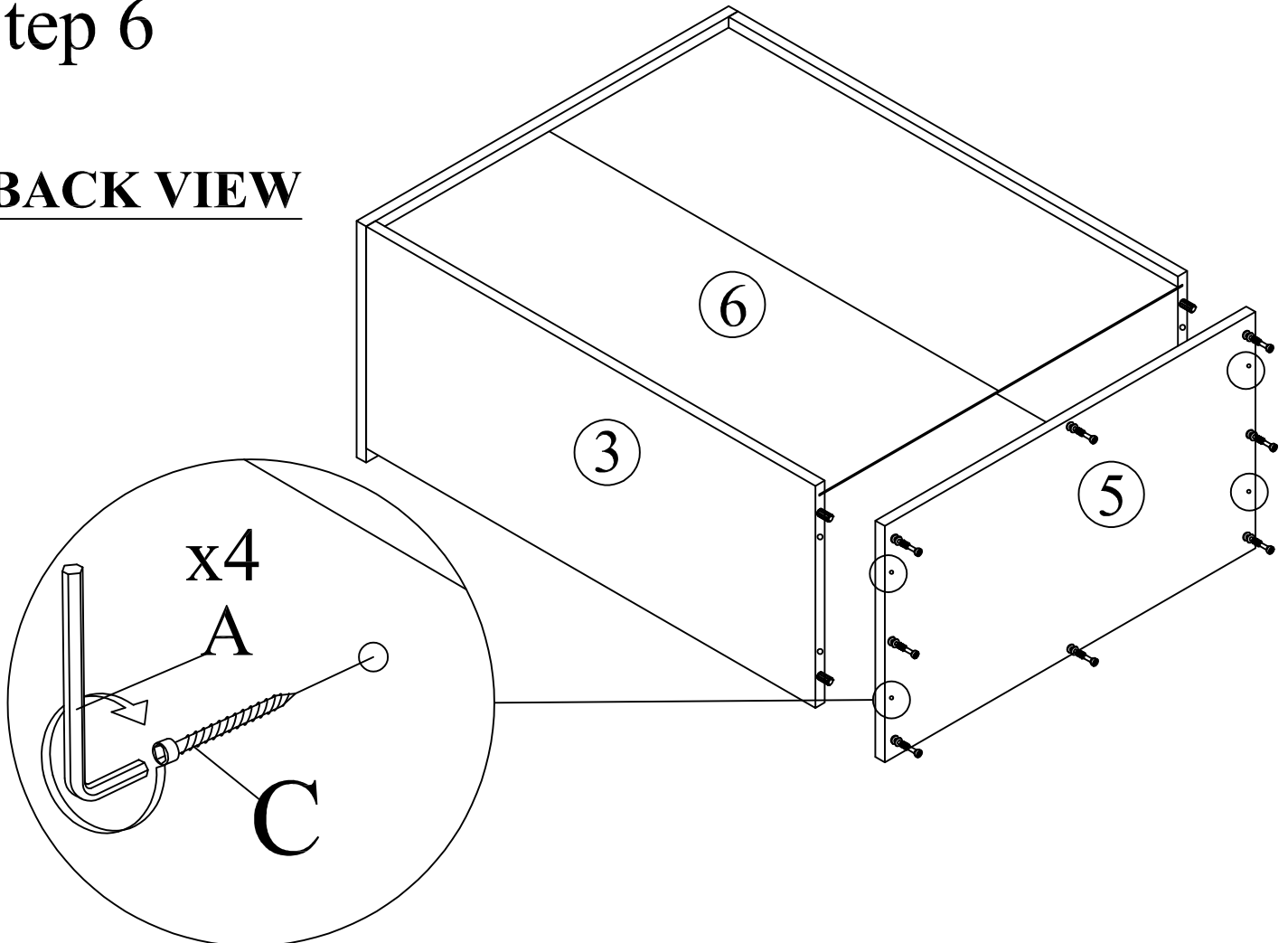
# Step 5

BACK VIEW



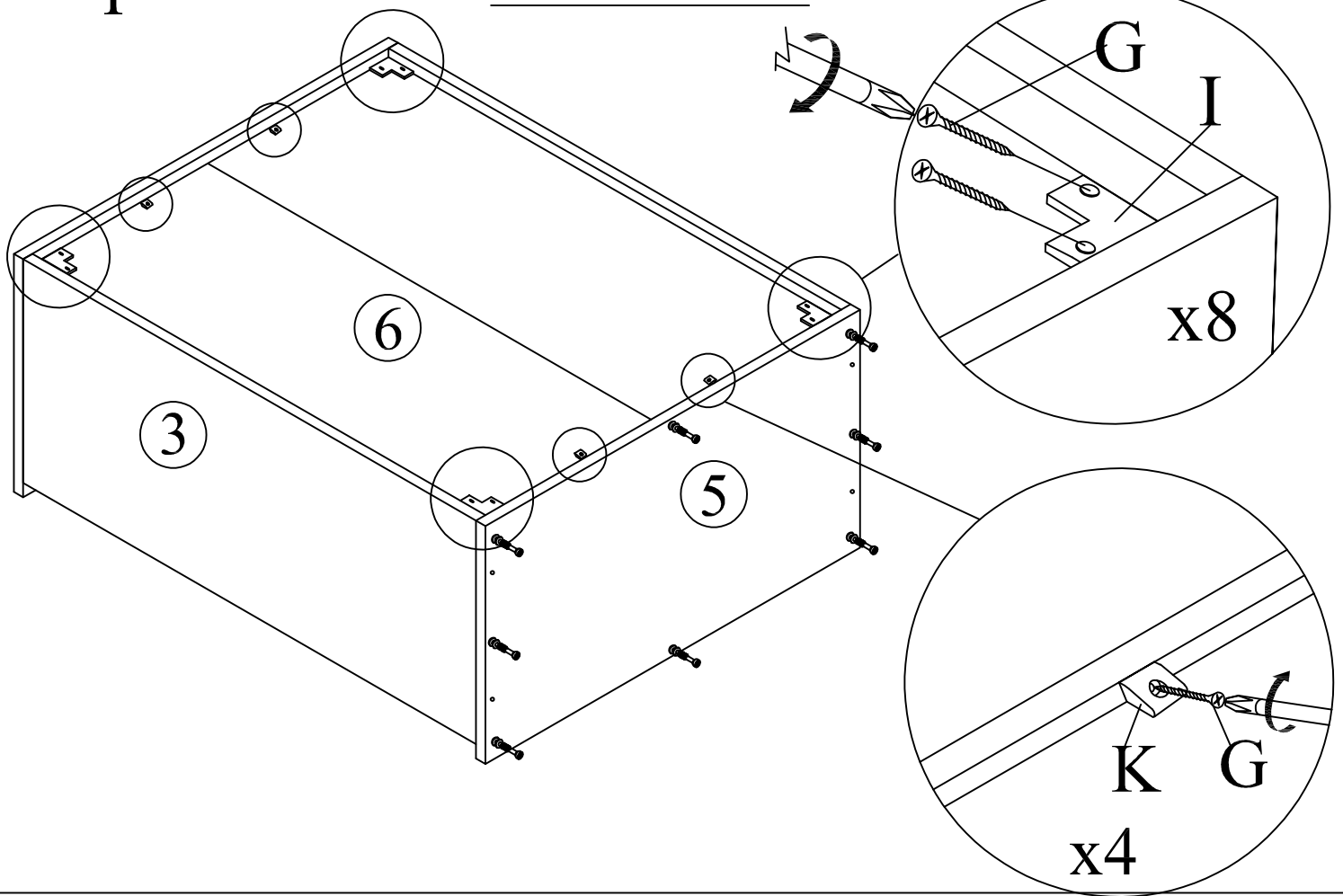
# Step 6

BACK VIEW



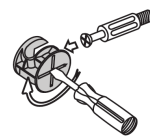
# Step 7

## BACK VIEW

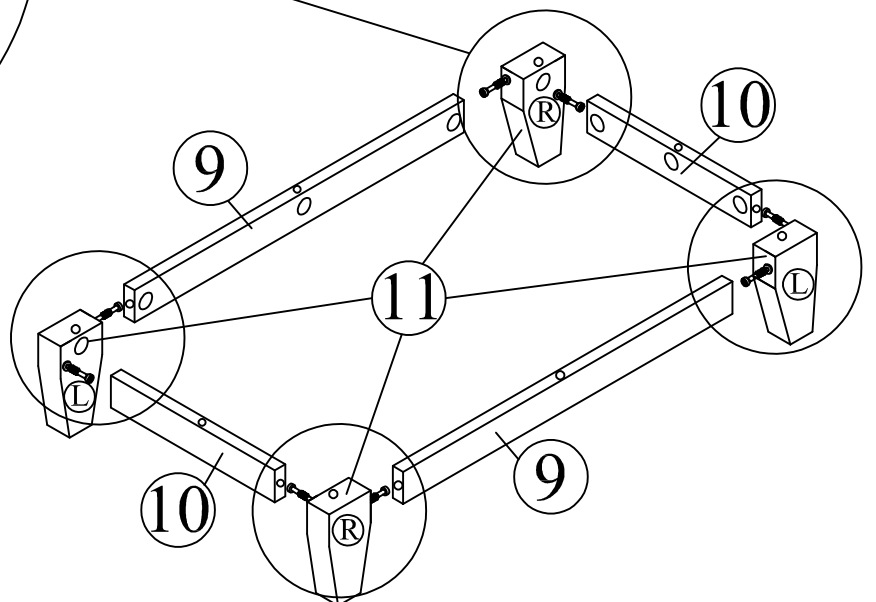
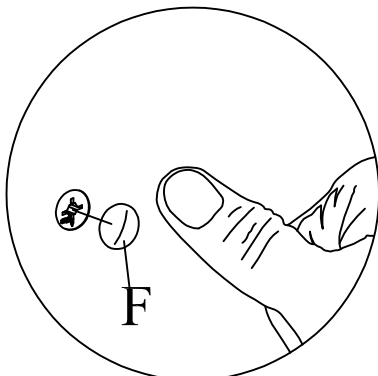
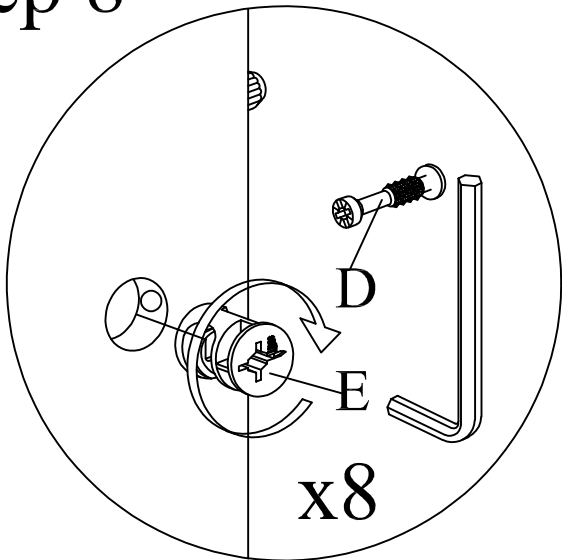


# Step 8

This is how a mini fix works...



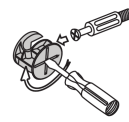
The head of the mini fix housing goes into the open mouth of the mini fix bolt. You then turn the mini fix housing so it tightens over the mini fix bolt.



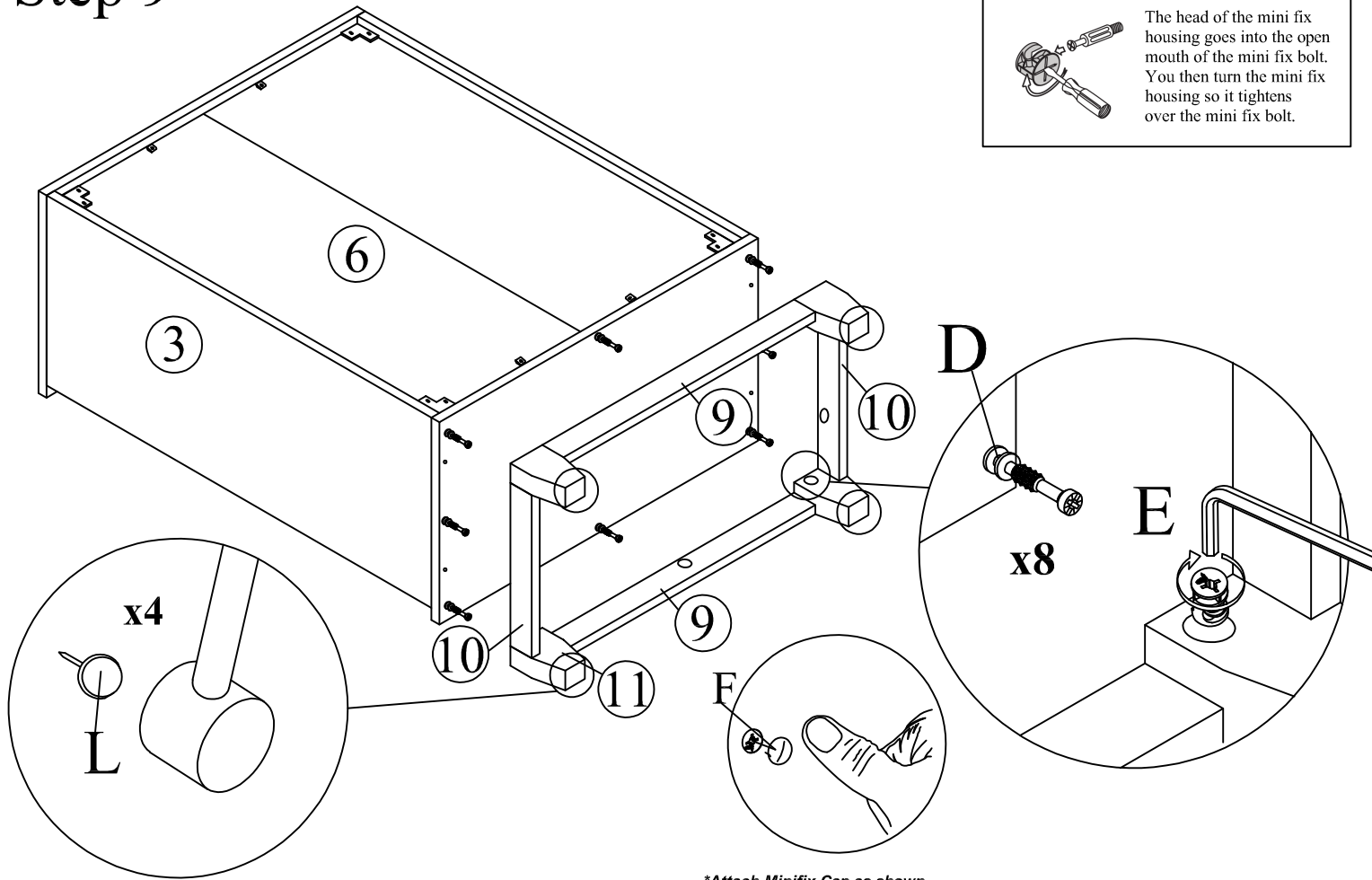
*\*Attach Minifix Cap as shown.*

# Step 9

This is how a mini fix works...



The head of the mini fix housing goes into the open mouth of the mini fix bolt. You then turn the mini fix housing so it tightens over the mini fix bolt.



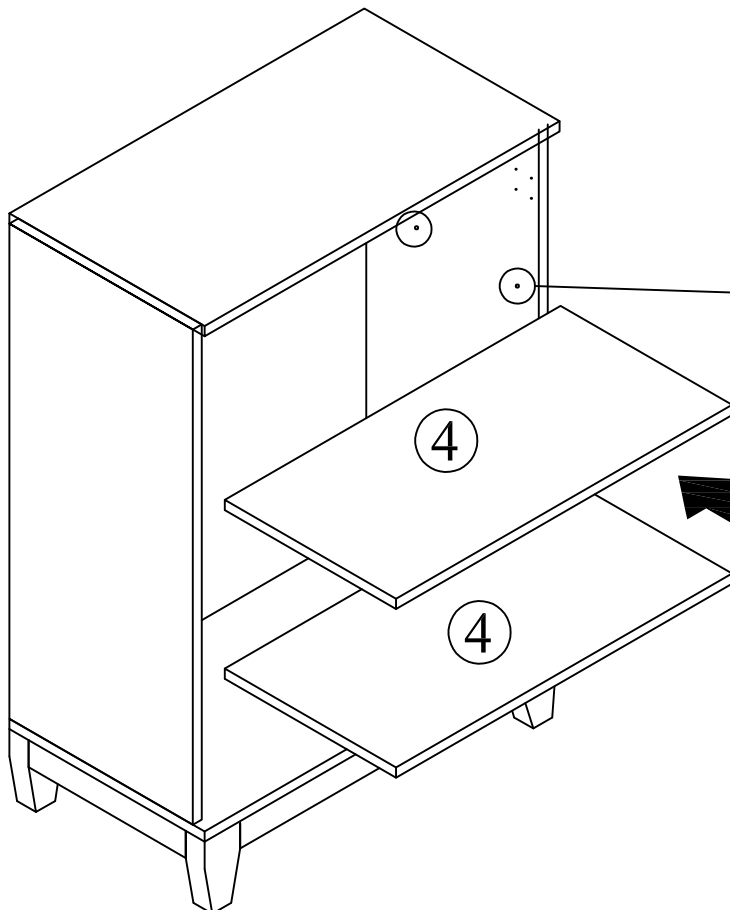
*\*Attach Minifix Cap as shown.*

# Step 10

Step 10.1

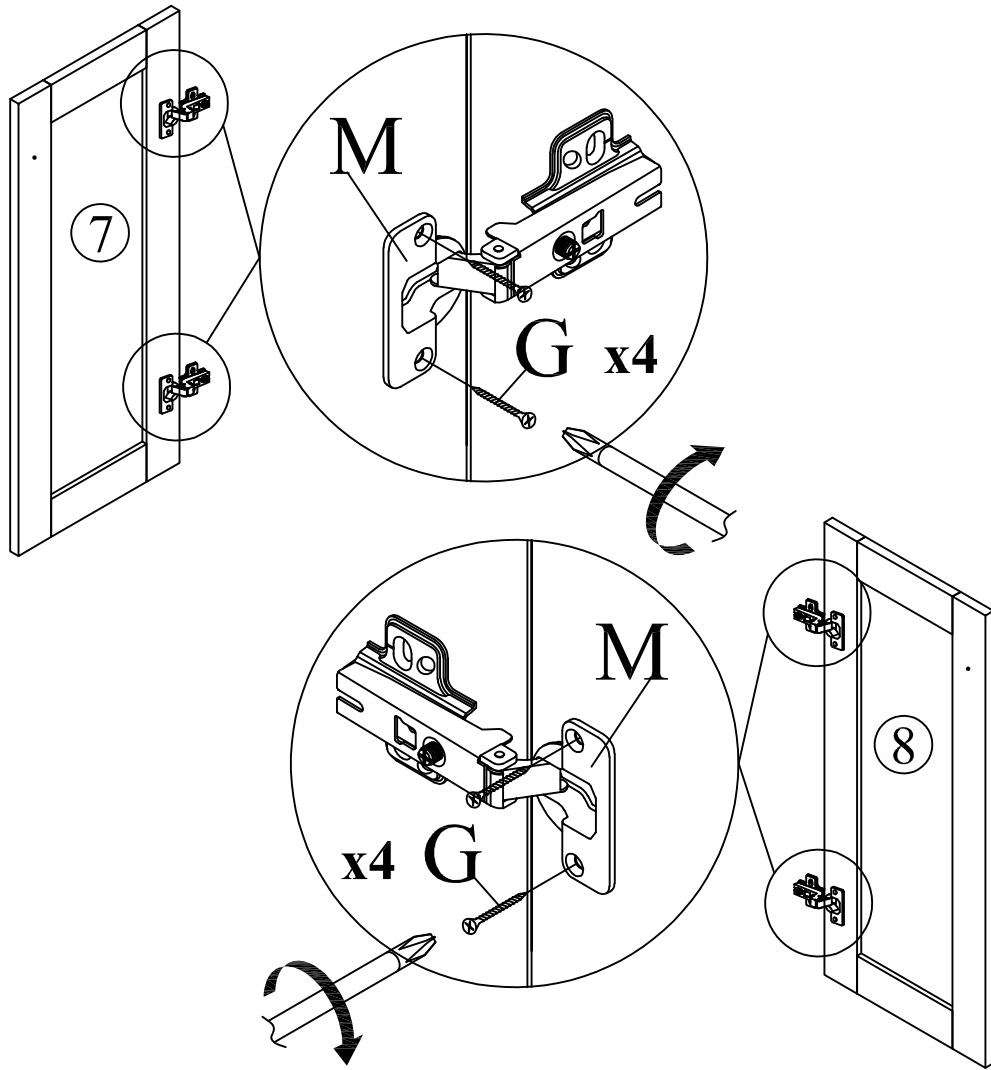
**x16**

**K**

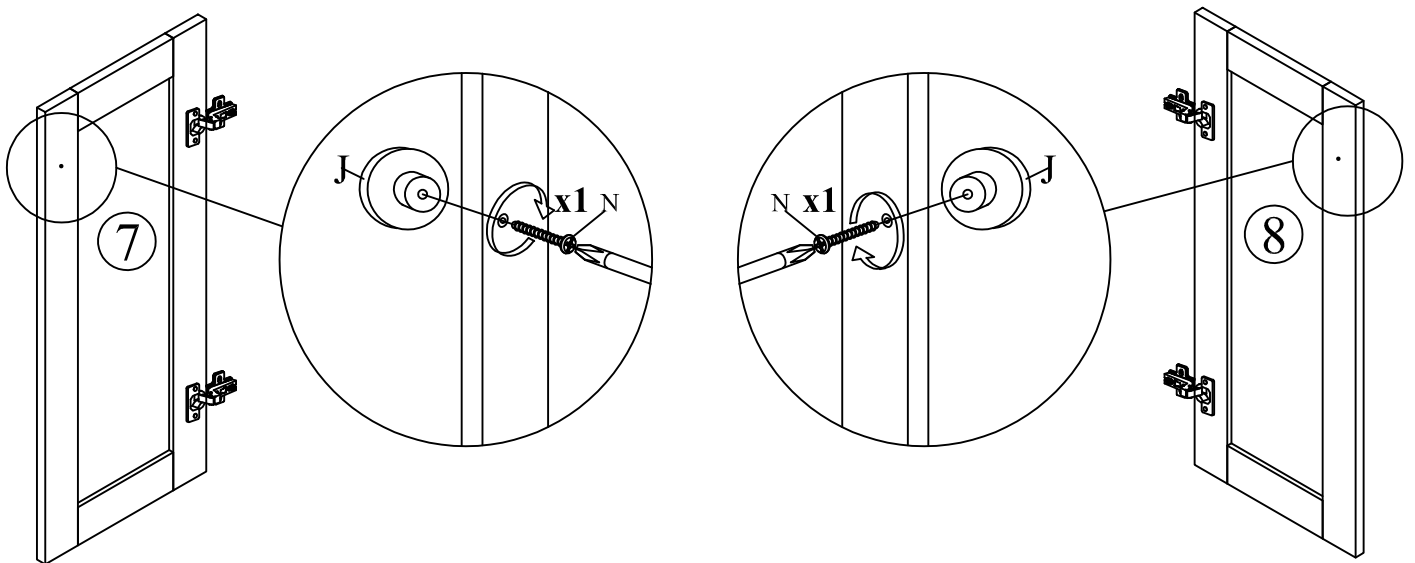


Step 10.2

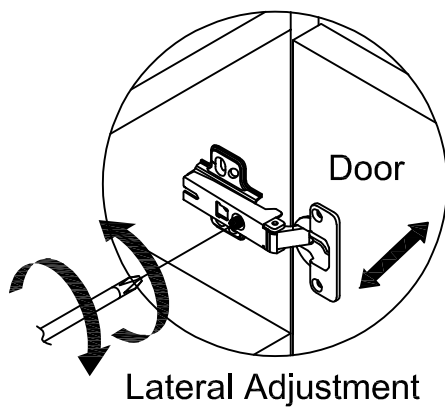
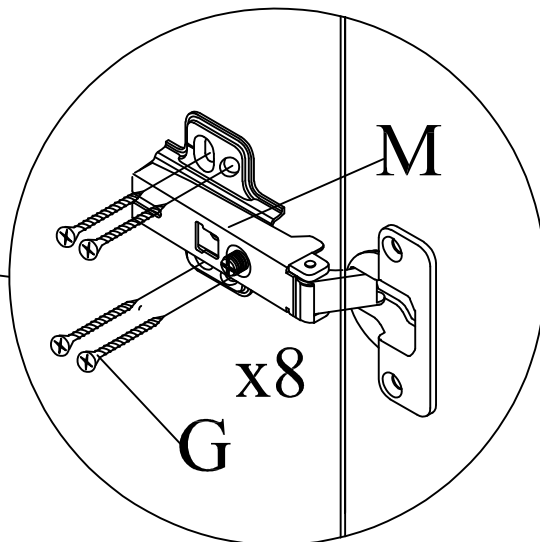
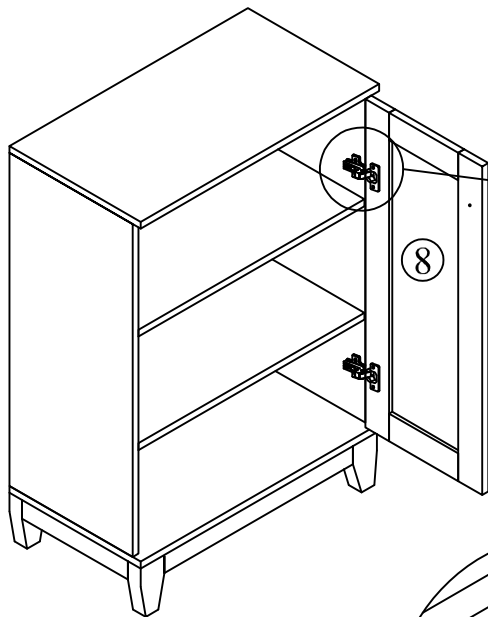
# Step 11



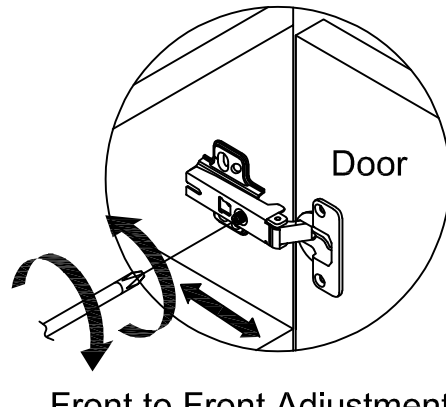
# Step 12



Step 13

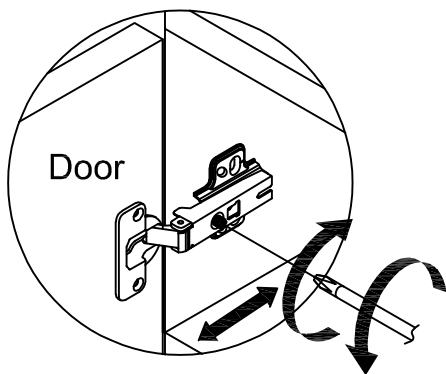
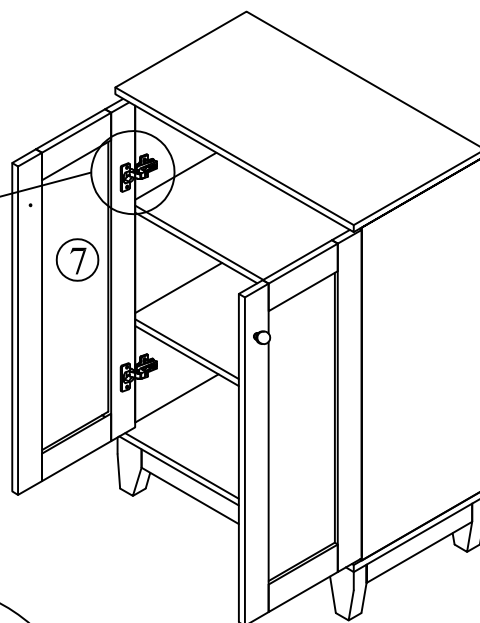
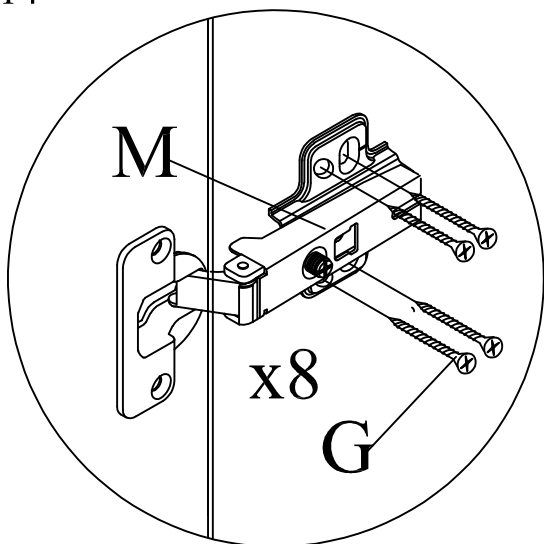


Lateral Adjustment

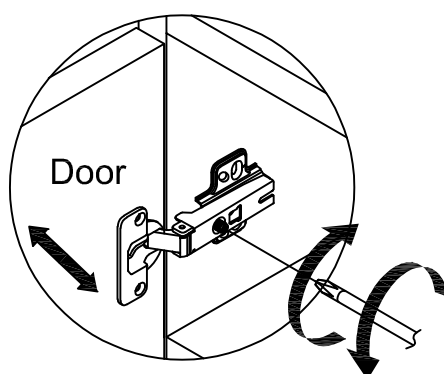


Front to Front Adjustment

Step 14



Front to Front Adjustment



Lateral Adjustment



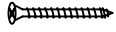
Anti -  
Tipping

(A)



CSK Screw  
M3.5x16mm  
1PC

(B)



CSK Screw  
M4x50mm  
1PC

(C)

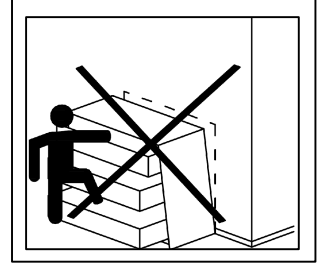
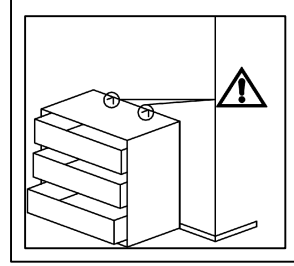


L BRACKET  
2PCS

(D)



CABLE TIE  
1PC



BACK VIEW

