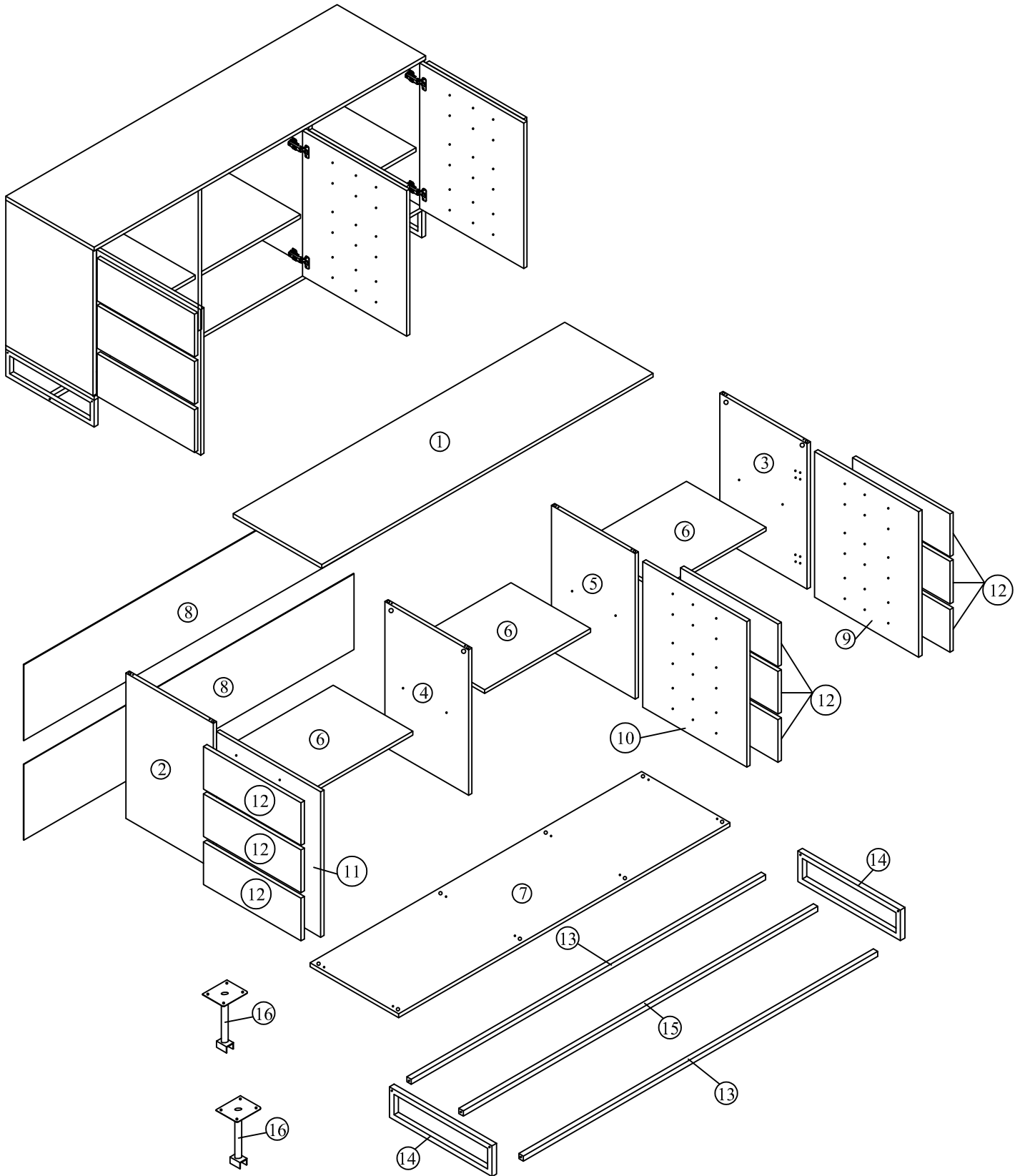


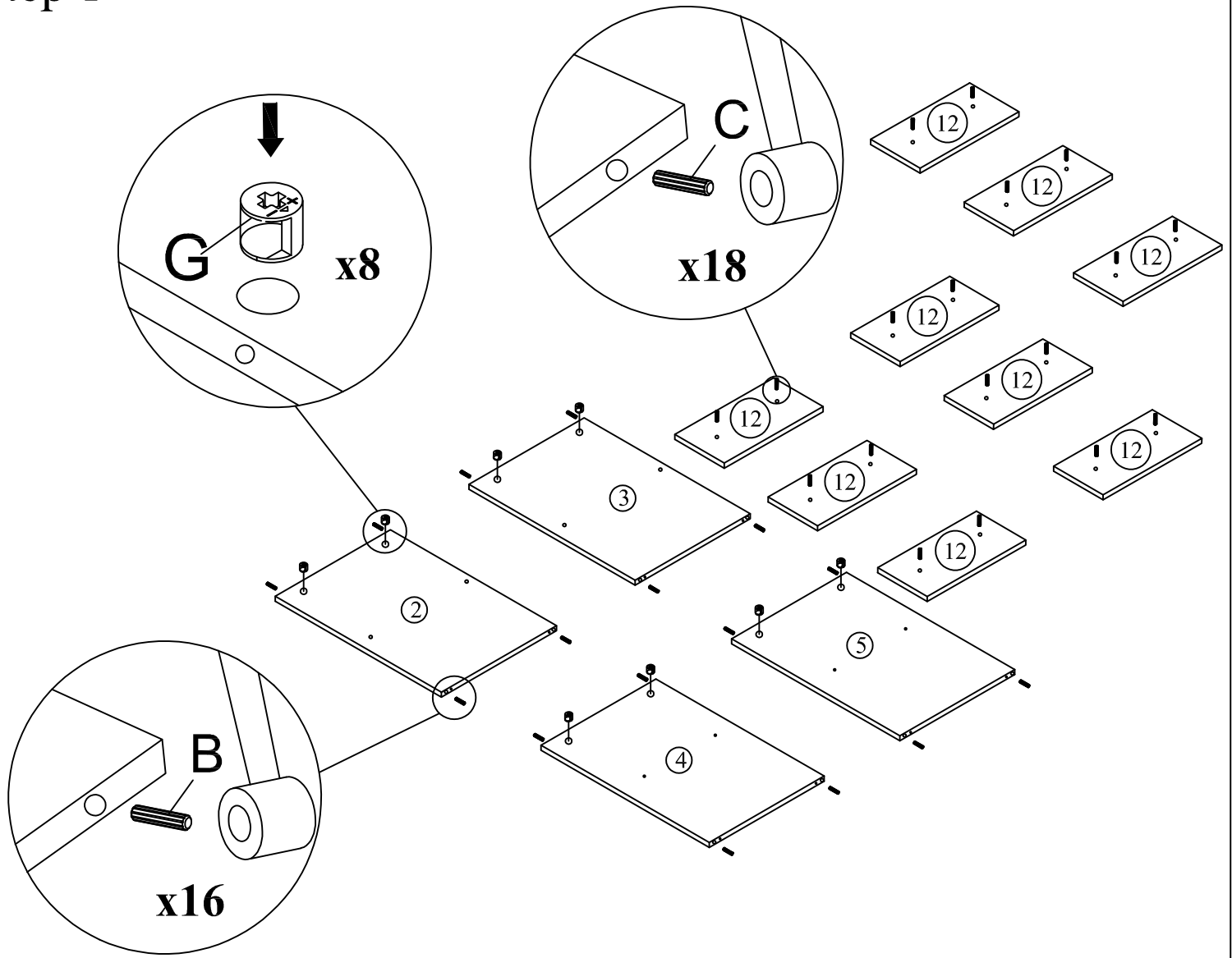
# Assembly Instructions

Model: MPC - 8009

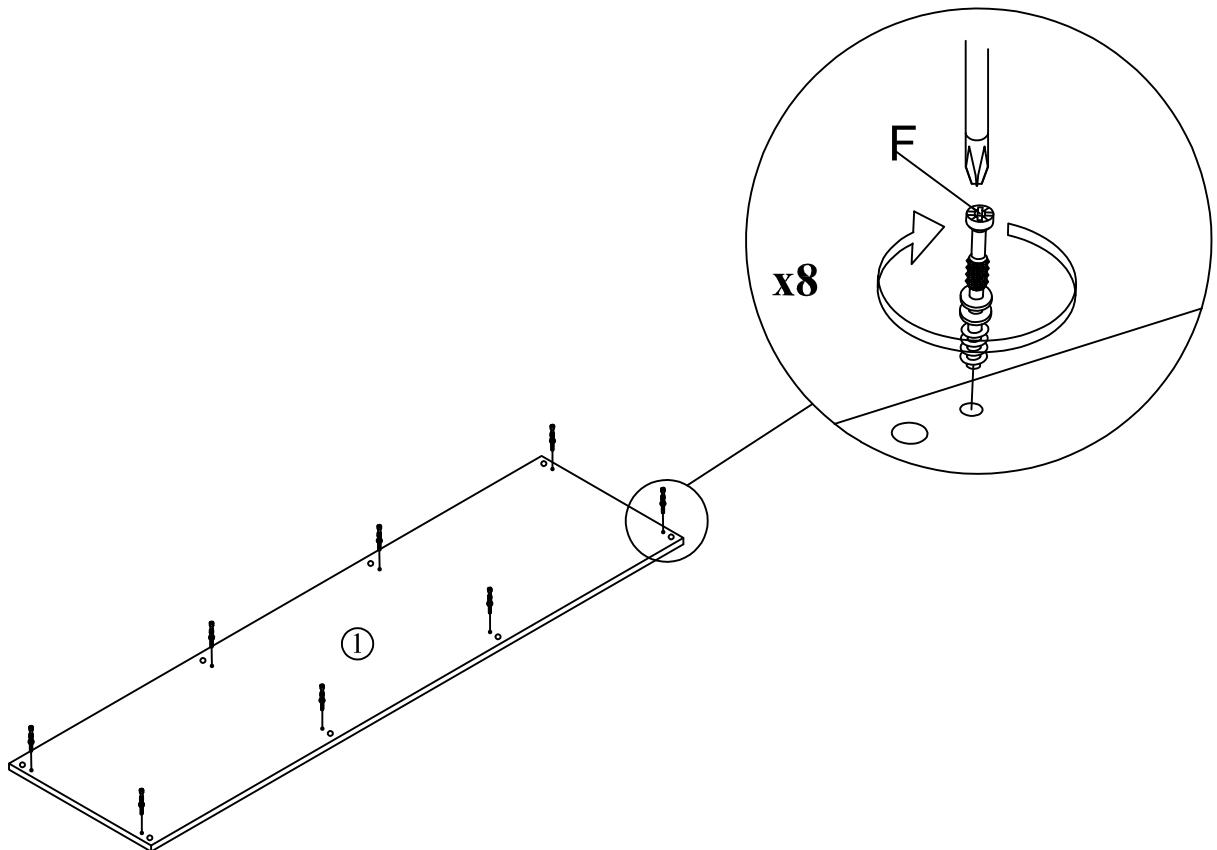
Part List		QTY	Part List		QTY	Hardware		QTY	Hardware		QTY
1	Top Panel	1	9	Right Door Panel	1	A	Allen Key M4	1	I	CSK Screw M4x30mm	54
2	Left Side Panel	1	10	Middle Door Panel	1	B	Plastic Dowel	16	J	CSK Screw M3.5x16mm	56
3	Right Side Panel	1	11	Left Door Panel	1	C	Wood Dowel	18	K	CSK Screw M4x32mm	6
4	Middle Panel	1	12	Door Support Panel	9	D	JCBC W Screw M6x40	8	L	Shell Support Metal	12
5	Middle Panel	1	13	Metal Support Legs	2	E	JCBC Screw M6x50 Spring+Flat Washer	6	M	Power Nail ½	72
6	Middle Support Panel	3	14	Metal Frame Legs	2	F	Mini Fix Bolt	8	N	5/8 Hinge	6
7	Bottom Panel	1	15	Metal Center Legs	1	G	Mini Fix Housing	8	O	Door Spring	3
8	Back Panel	2	16	Metal Support Legs	2	H	Mini Fix Cap	8	P	Magnet Spring	3



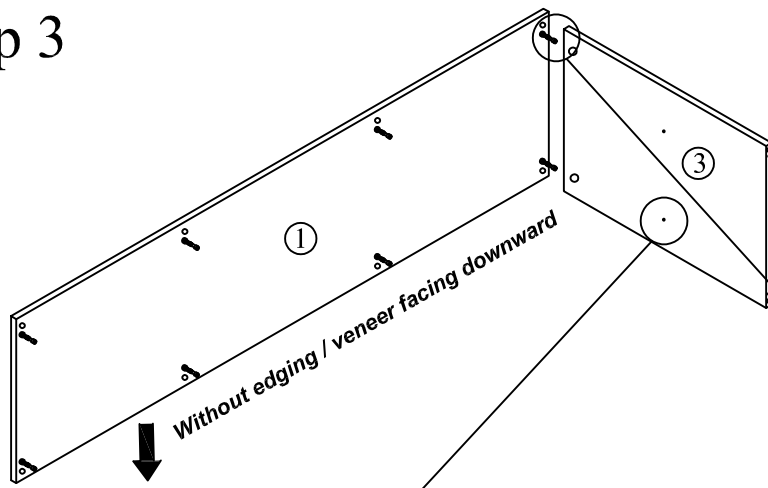
# Step 1



# Step 2

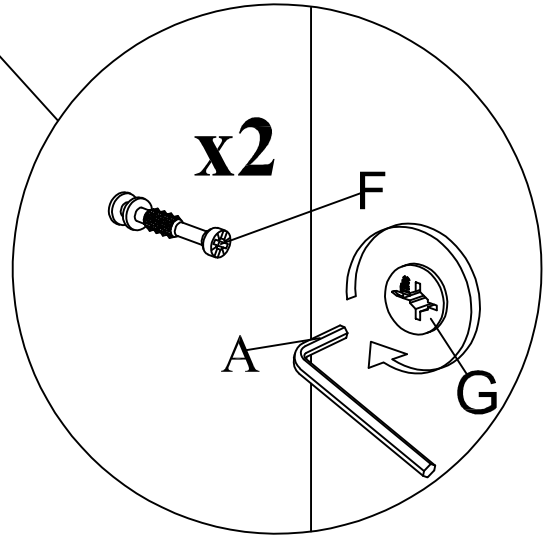
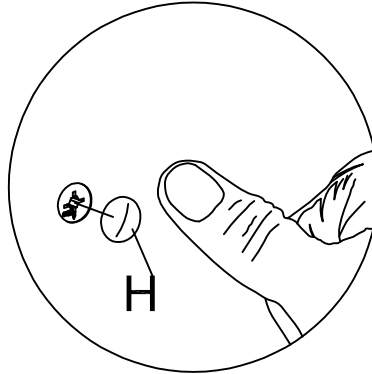
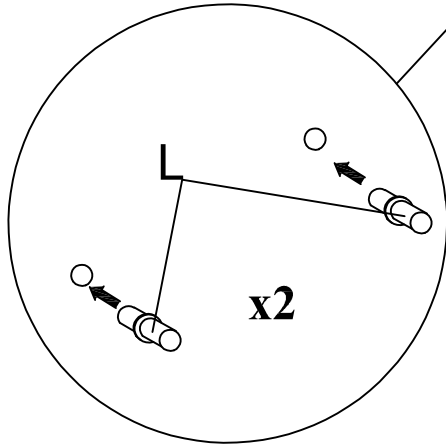


# Step 3



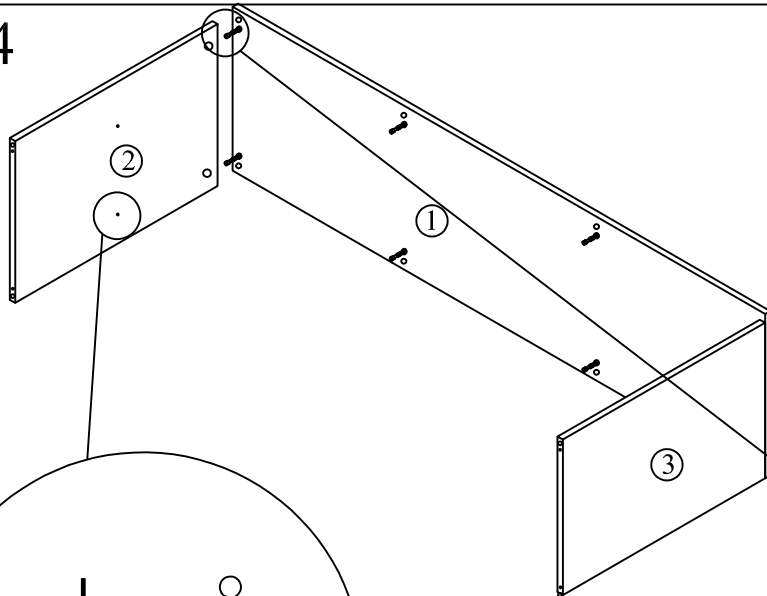
This is how a mini fix works...

The head of the mini fix housing goes into the open mouth of the mini fix bolt. You then turn the mini fix housing so it tightens over the mini fix bolt.



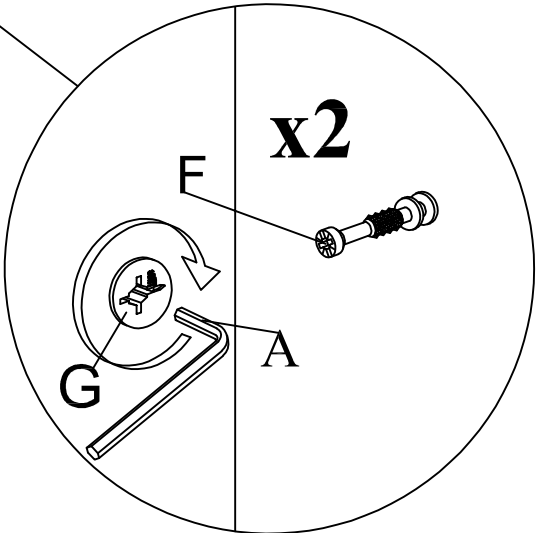
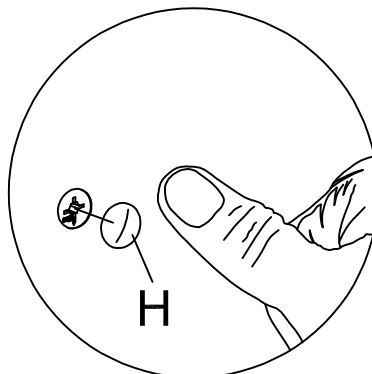
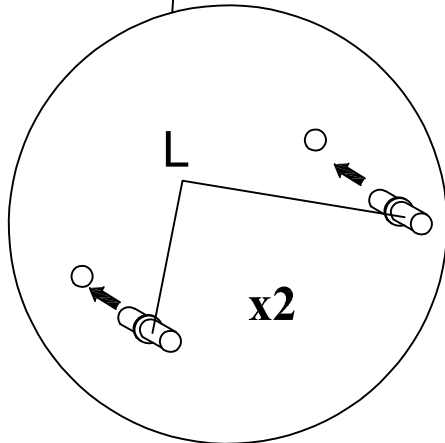
*\*Attach Minifix Cap as shown.*

# Step 4



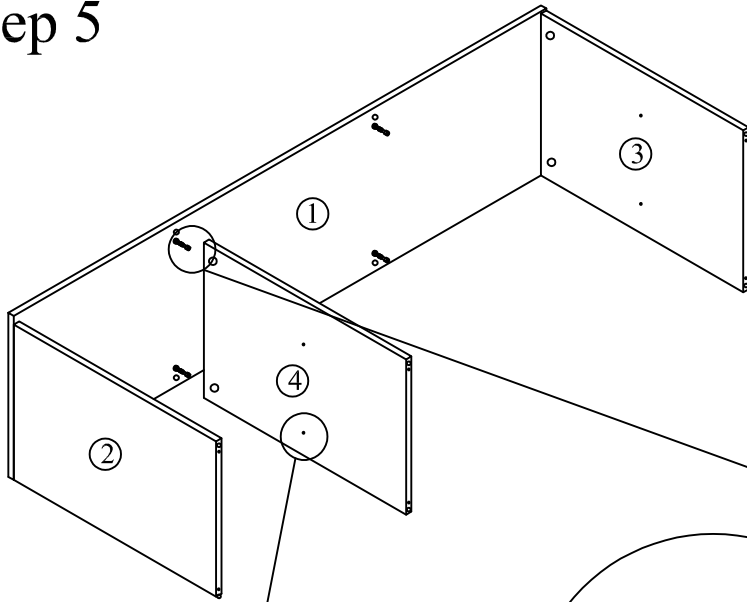
This is how a mini fix works...

The head of the mini fix housing goes into the open mouth of the mini fix bolt. You then turn the mini fix housing so it tightens over the mini fix bolt.

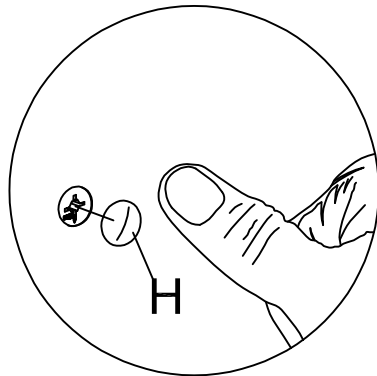
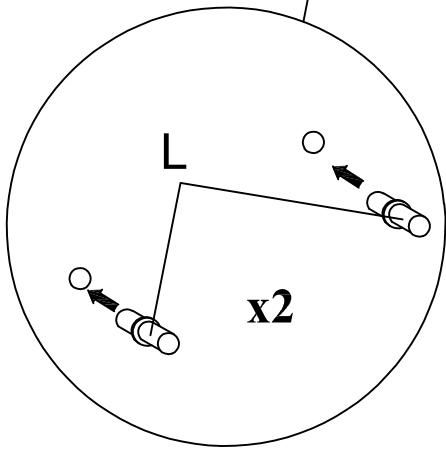
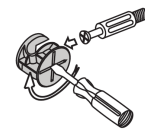


*\*Attach Minifix Cap as shown.*

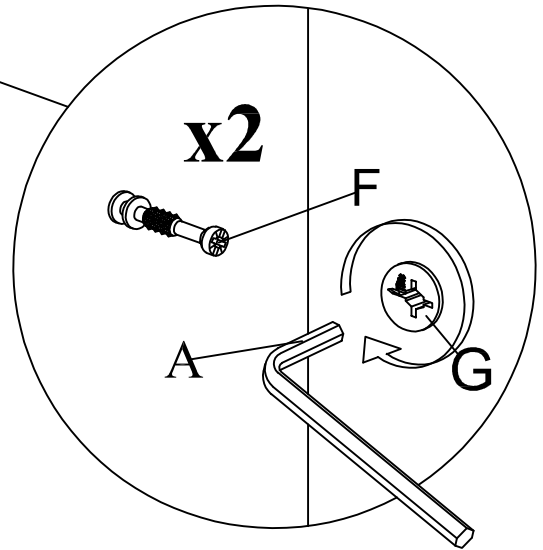
# Step 5



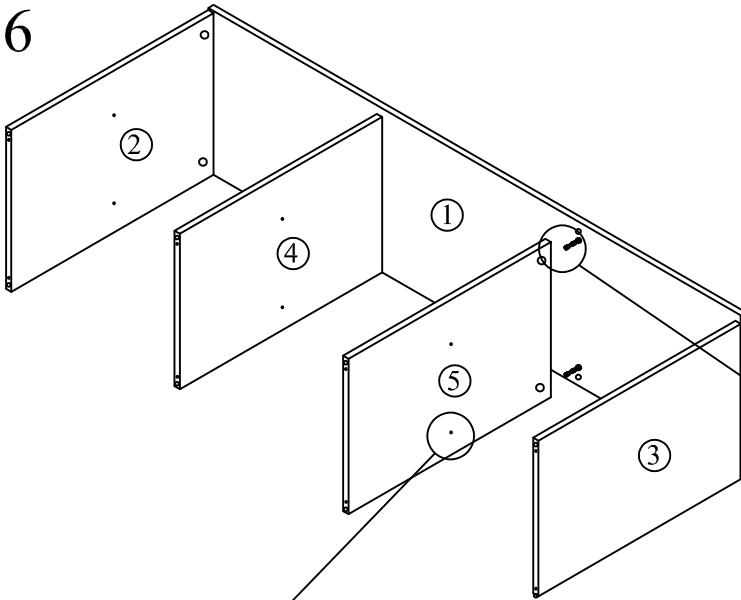
This is how a mini fix works...  
The head of the mini fix housing goes into the open mouth of the mini fix bolt. You then turn the mini fix housing so it tightens over the mini fix bolt.



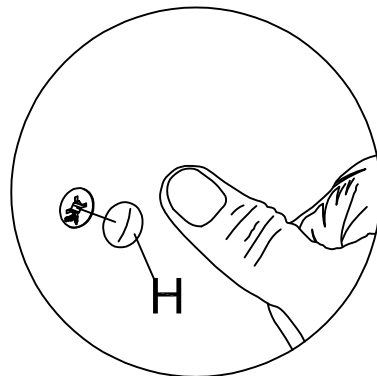
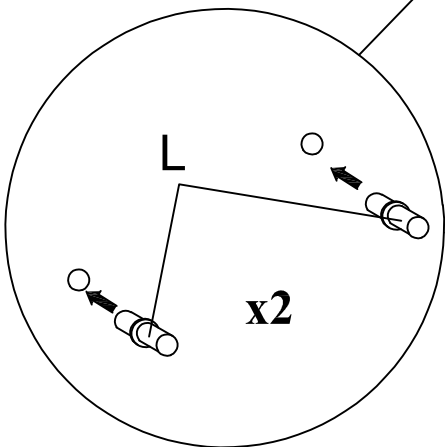
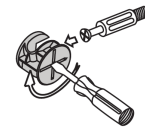
*\*Attach Minifix Cap as shown.*



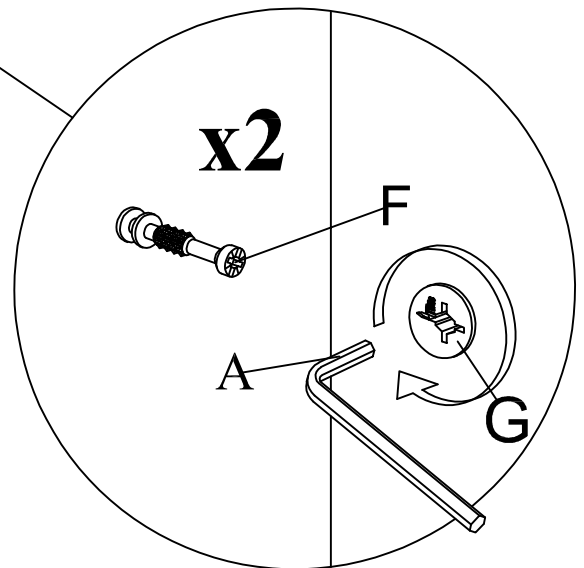
# Step 6



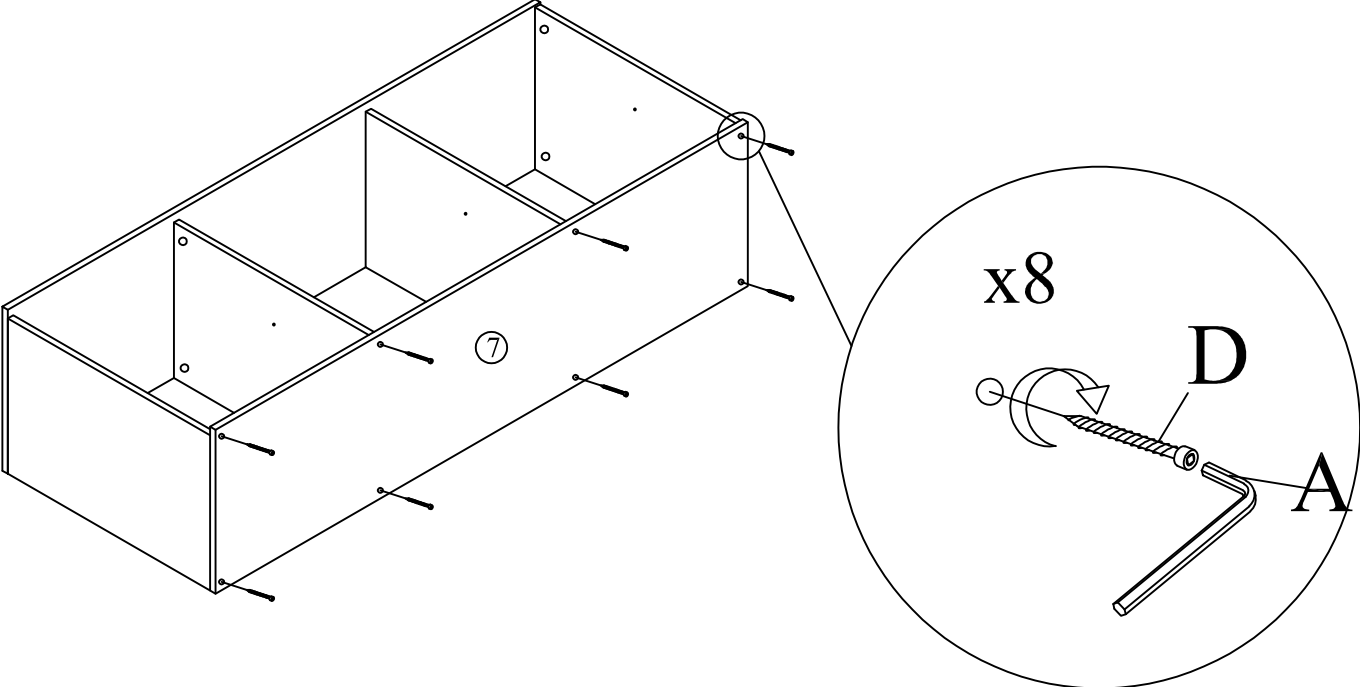
This is how a mini fix works...  
The head of the mini fix housing goes into the open mouth of the mini fix bolt. You then turn the mini fix housing so it tightens over the mini fix bolt.



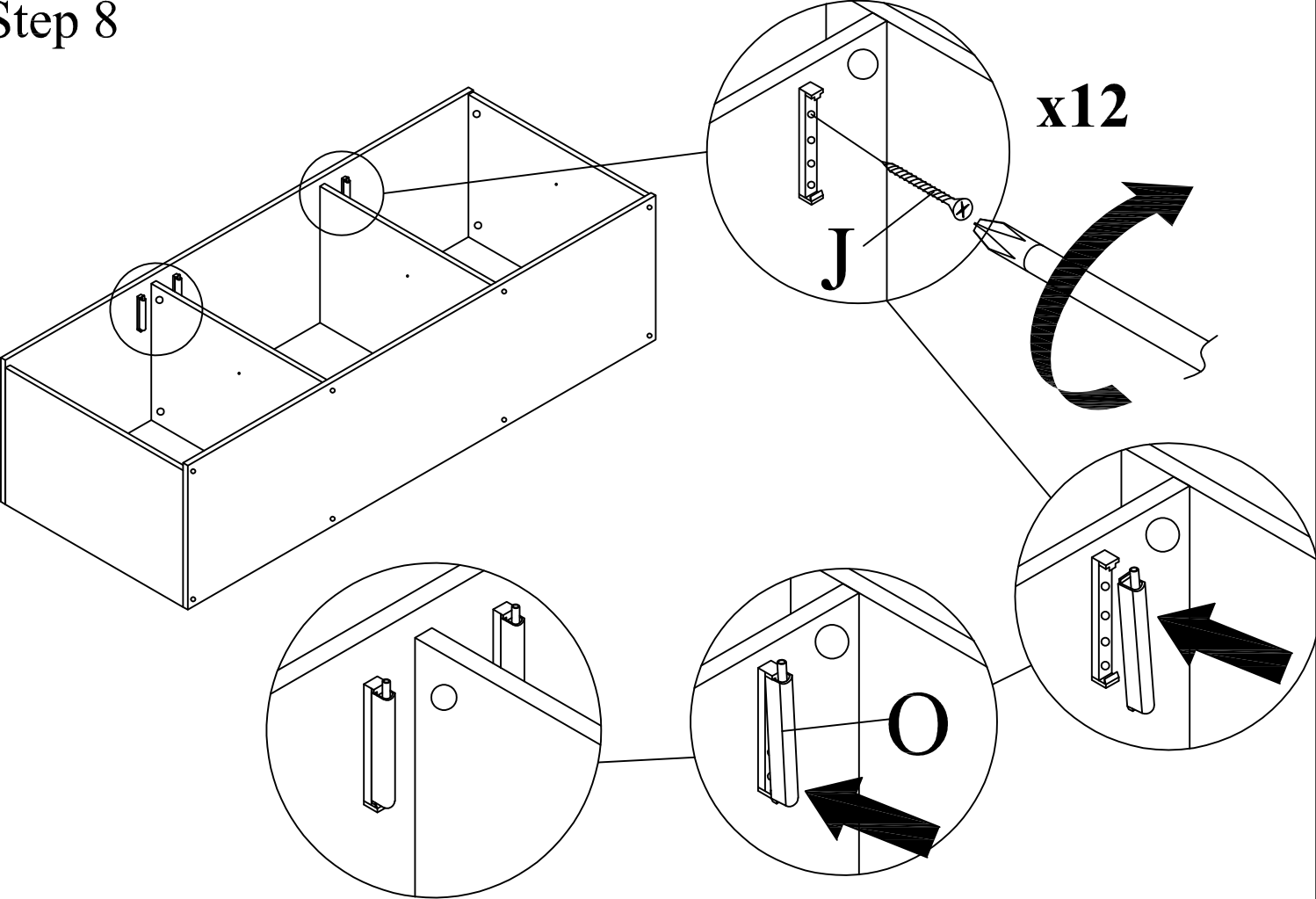
*\*Attach Minifix Cap as shown.*



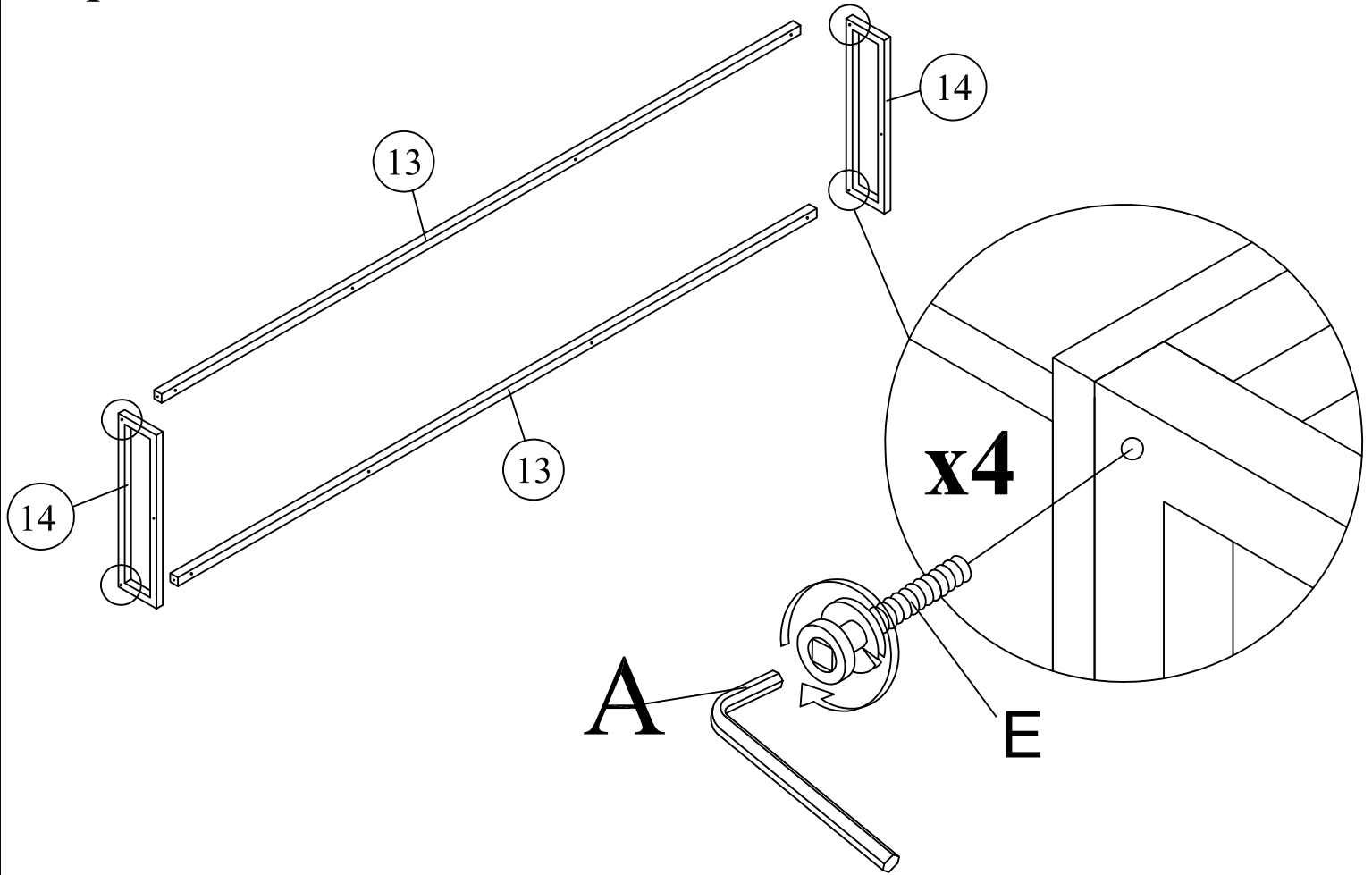
Step 7



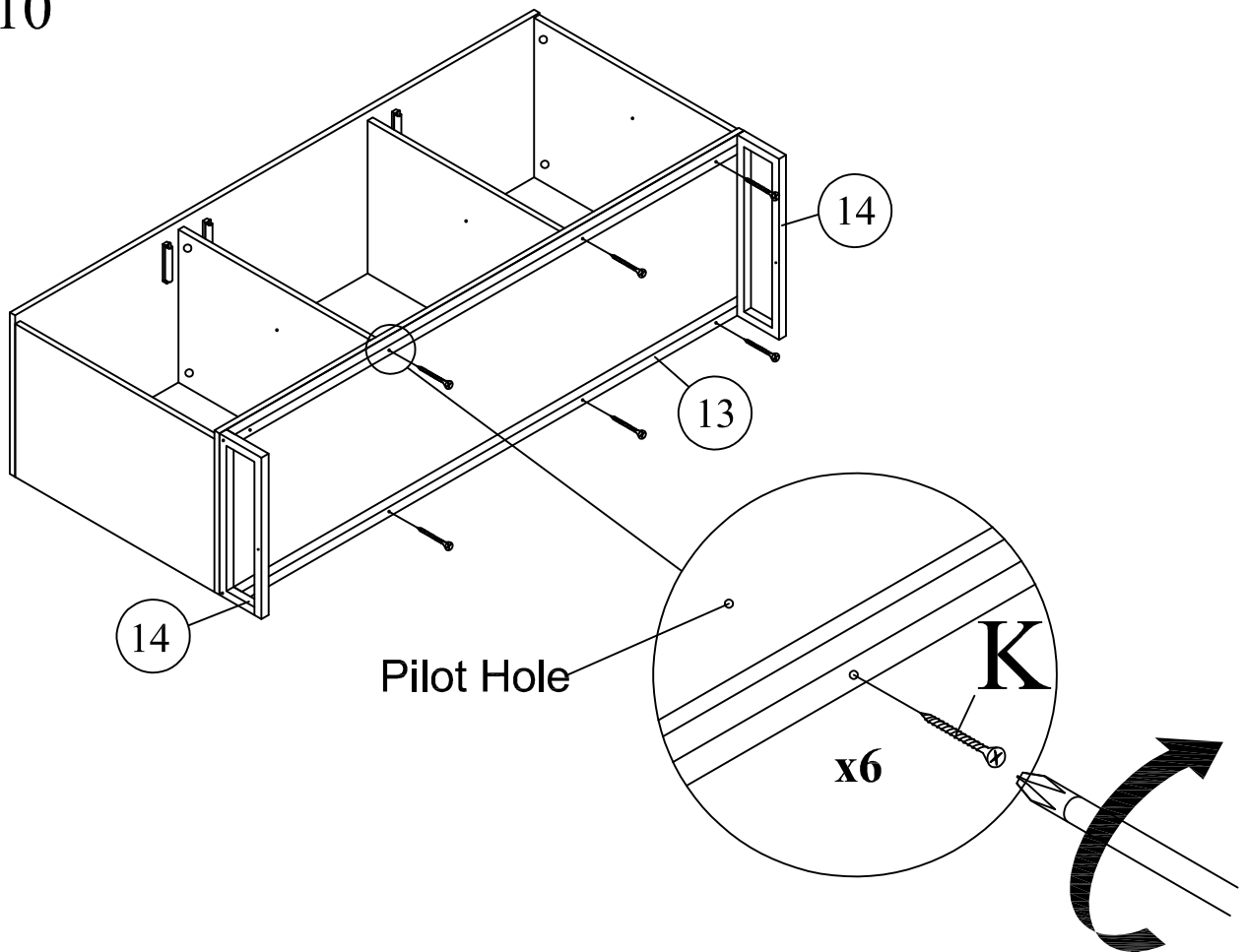
Step 8



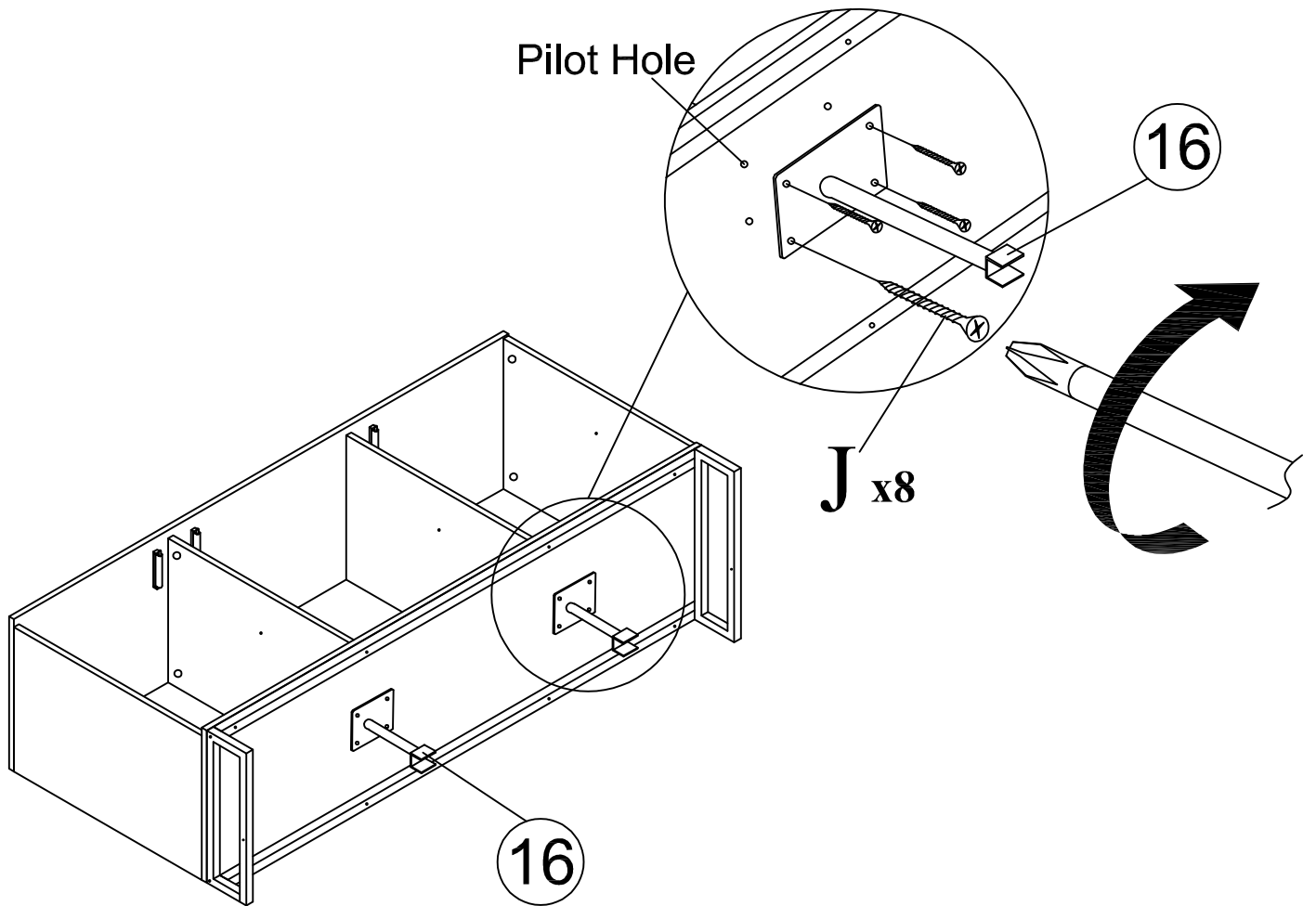
# Step 9



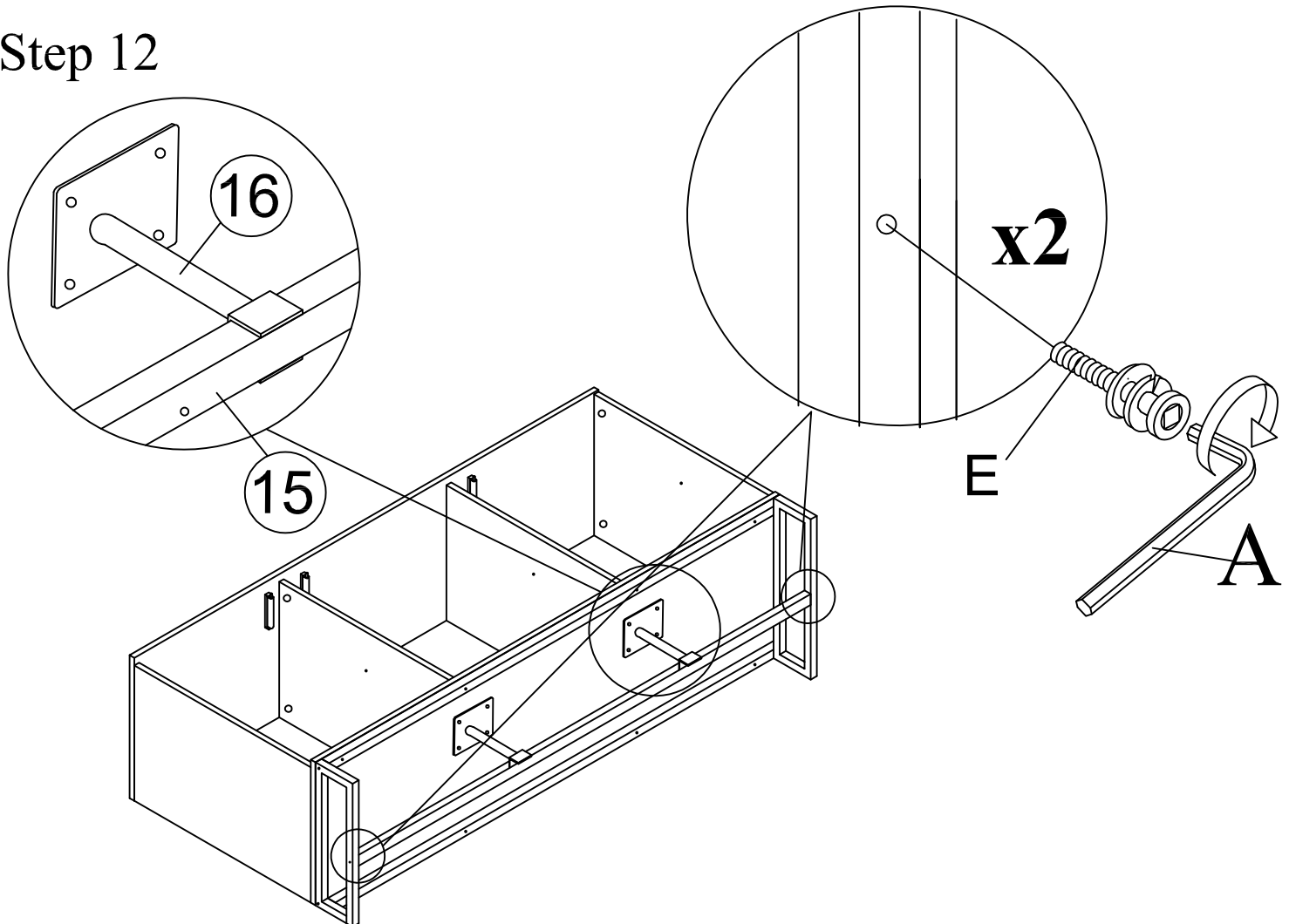
# Step 10



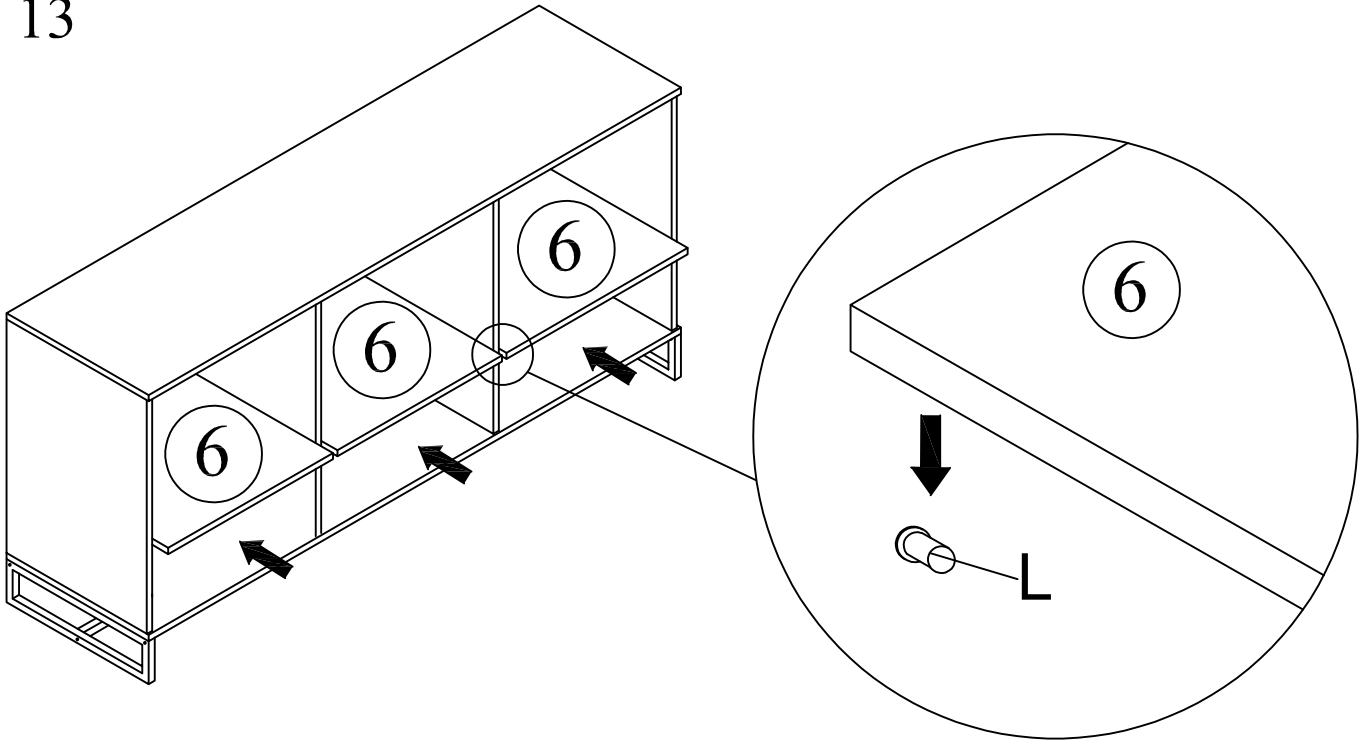
# Step 11



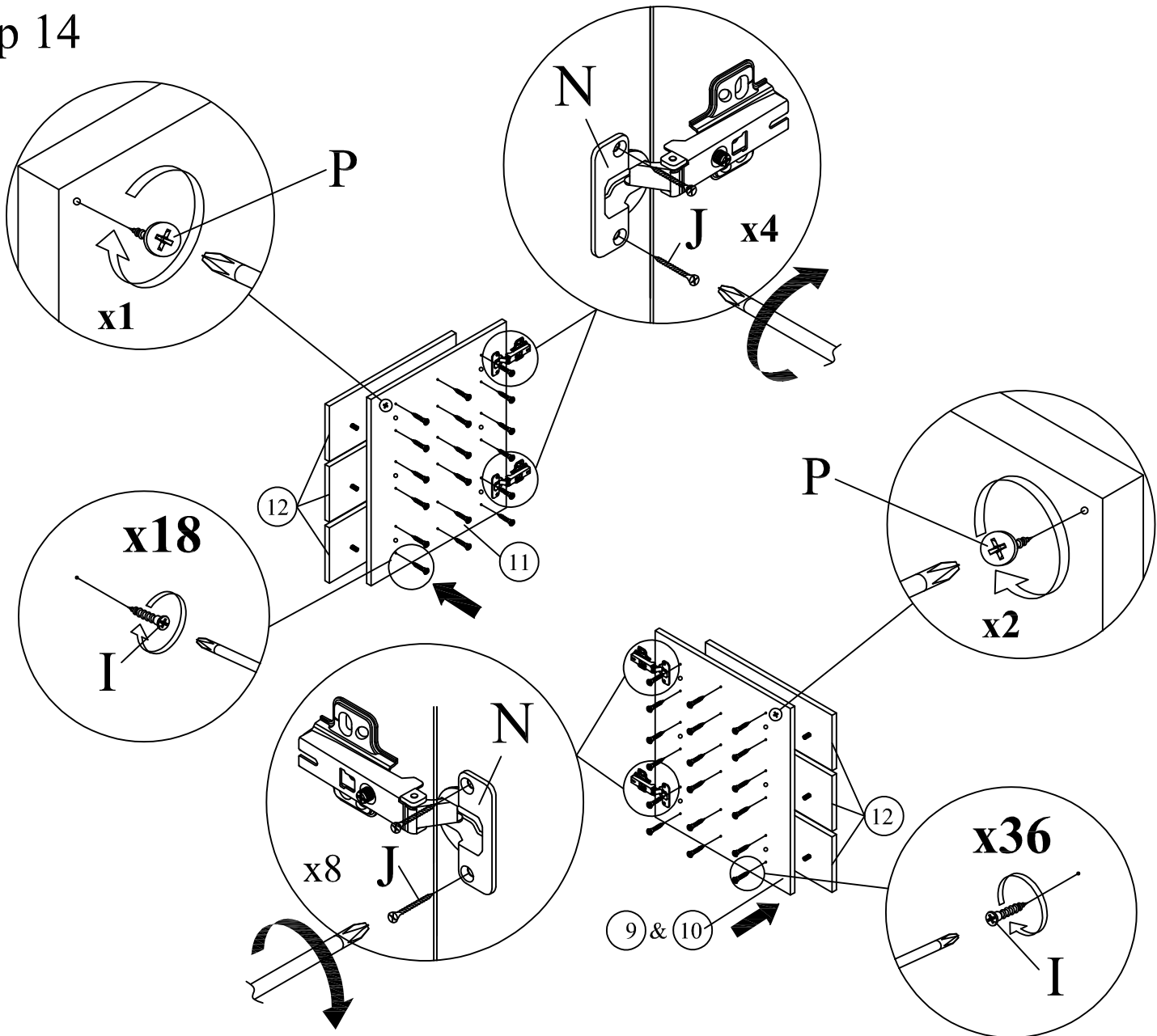
# Step 12



# Step 13



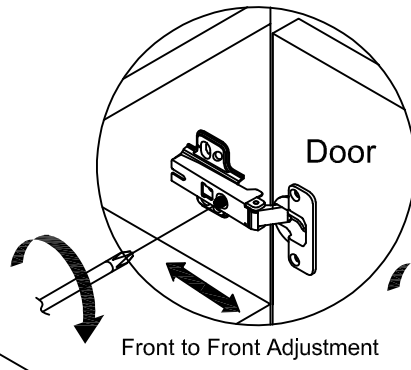
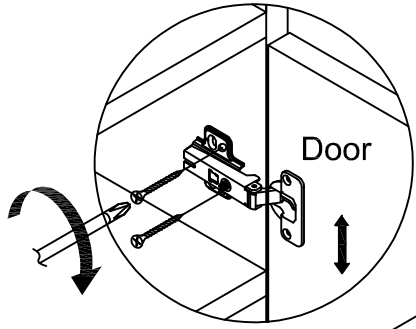
# Step 14



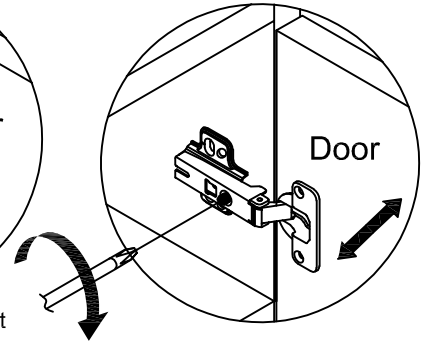


# Step 15

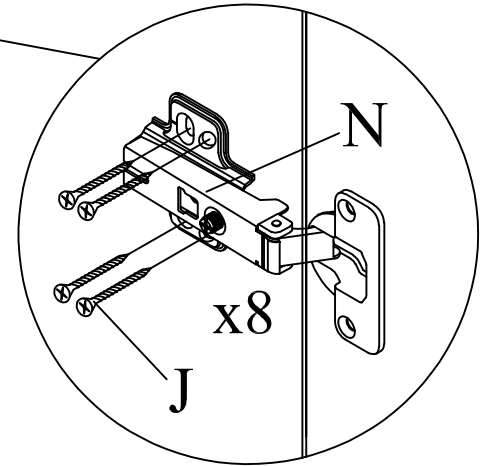
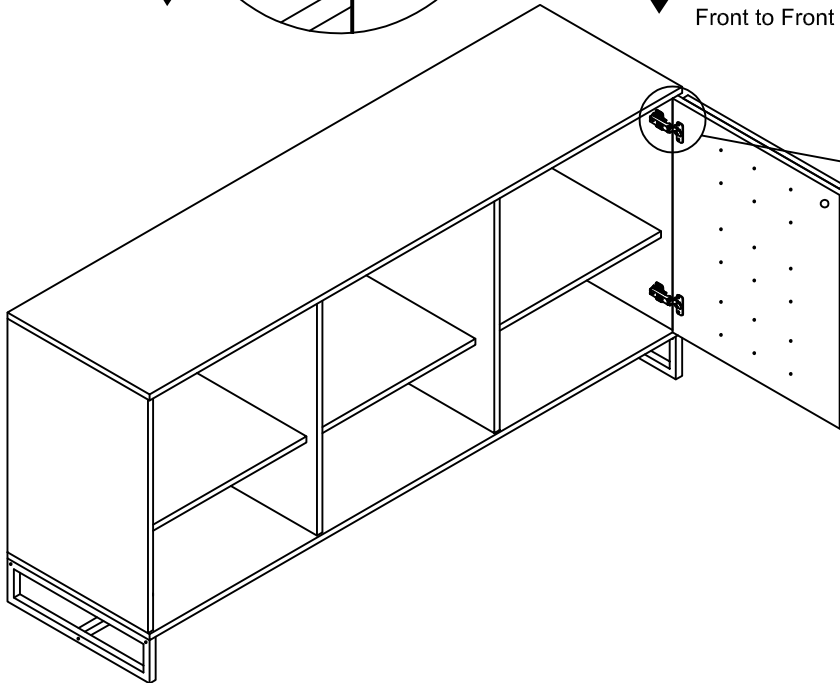
Vertical Adjustment



Front to Front Adjustment

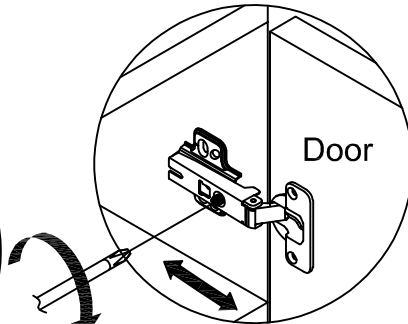
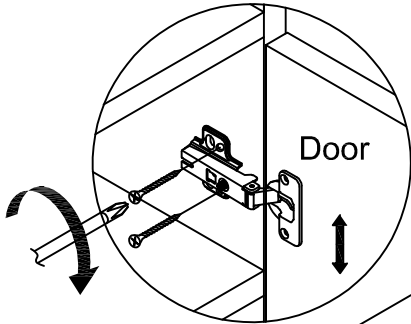


Lateral Adjustment

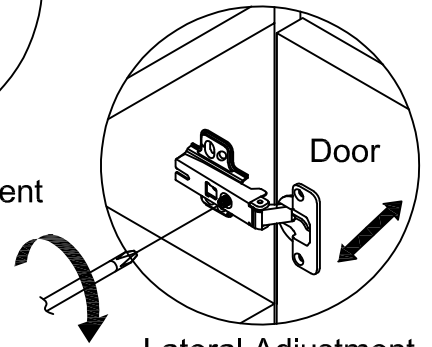


# Step 16

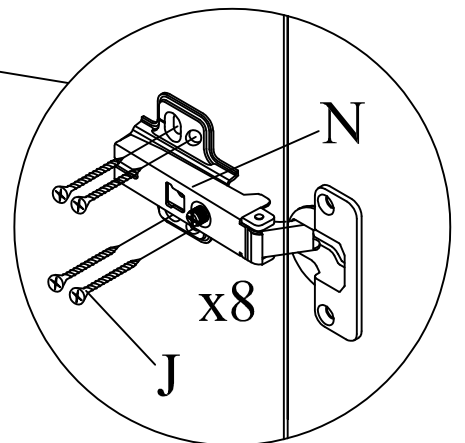
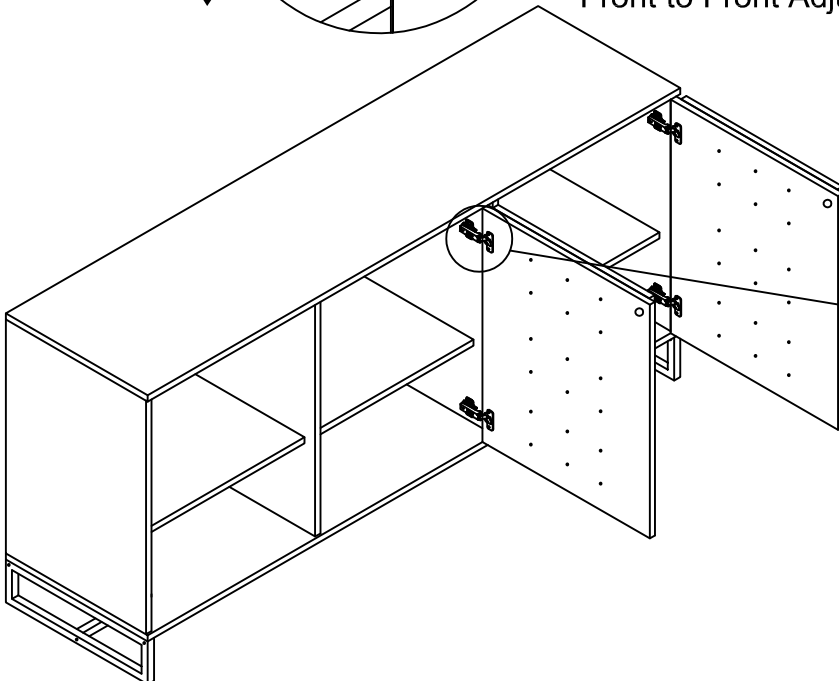
Vertical Adjustment



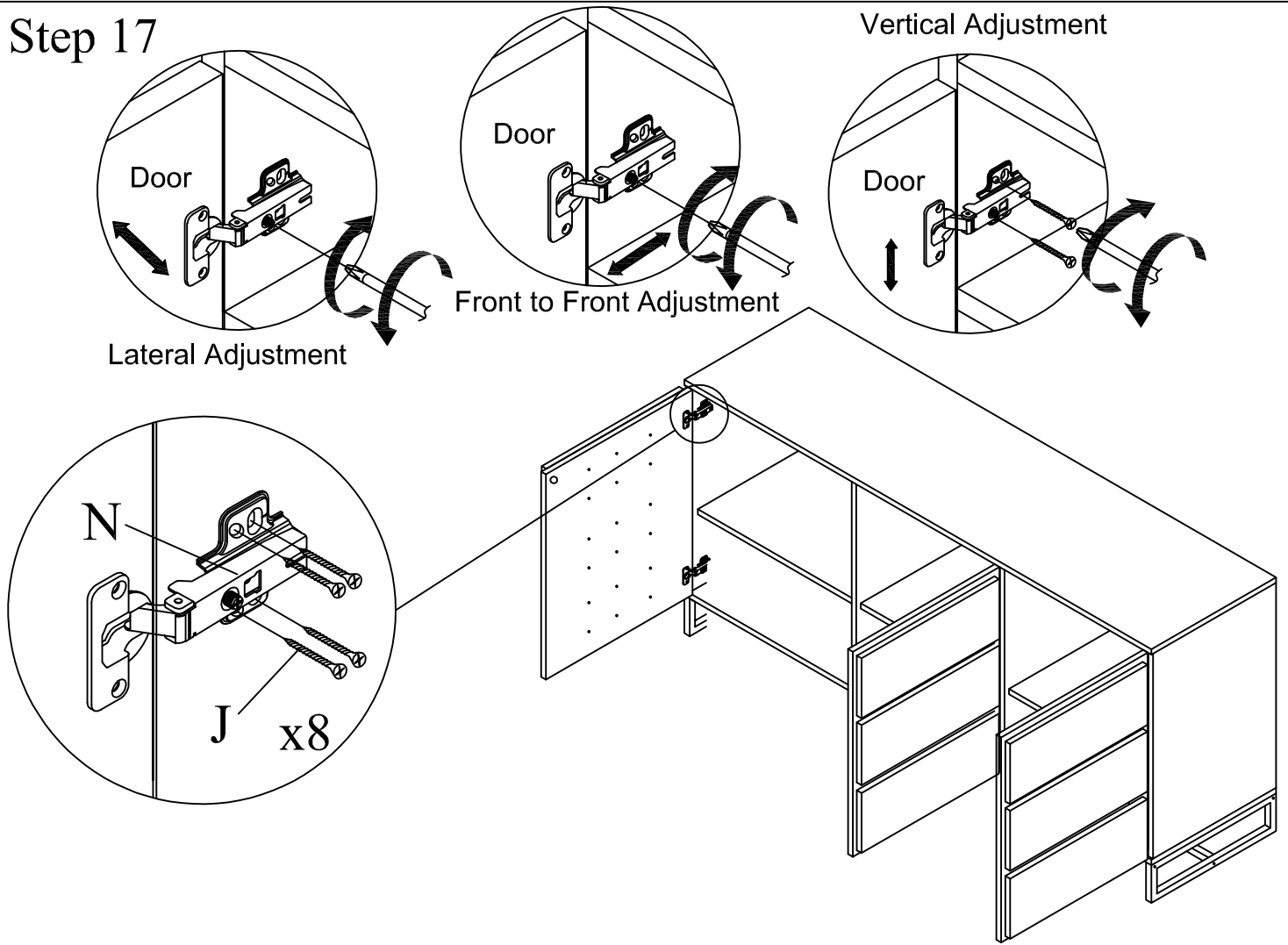
Front to Front Adjustment



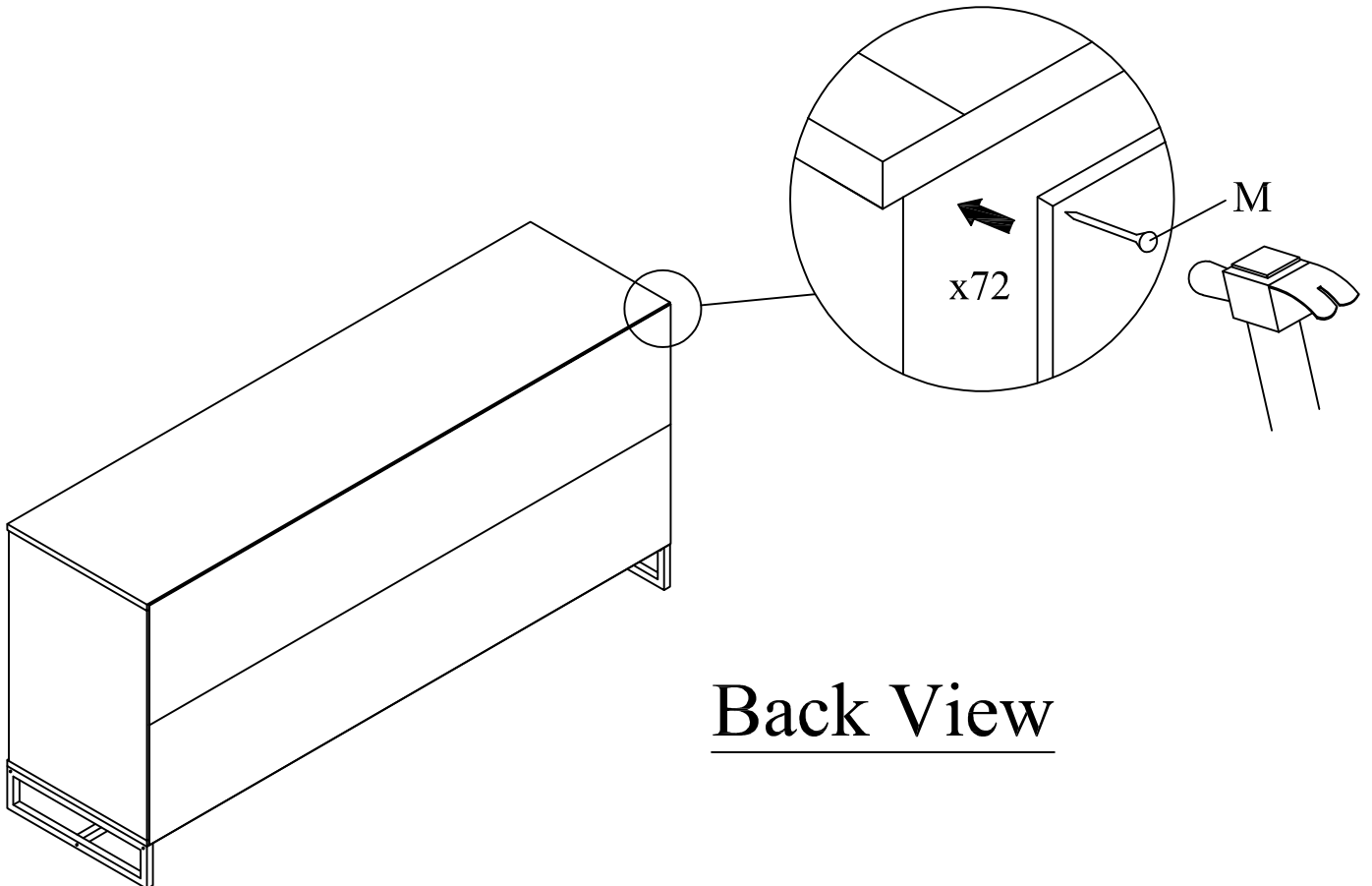
Lateral Adjustment



# Step 17



# Step 18



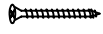
Anti -  
Tipping

(A)



CSK Screw  
M3.5x16mm  
1PC

(B)



CSK Screw  
M4x50mm  
1PC

(C)

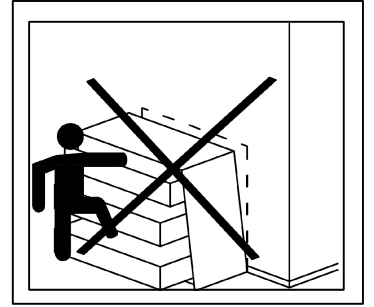
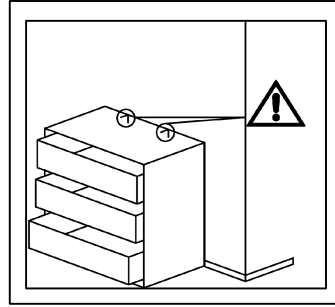


L BRACKET  
2PCS

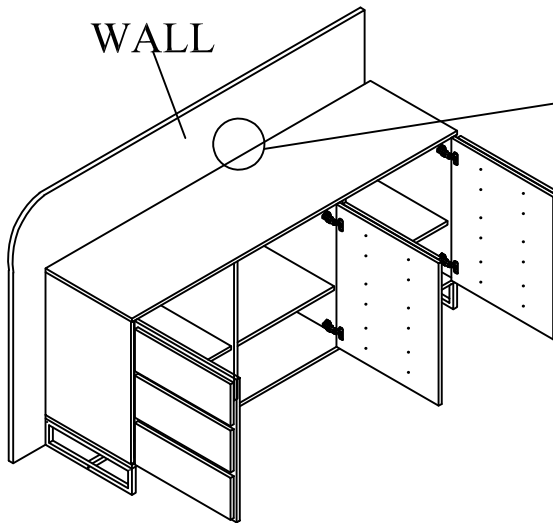
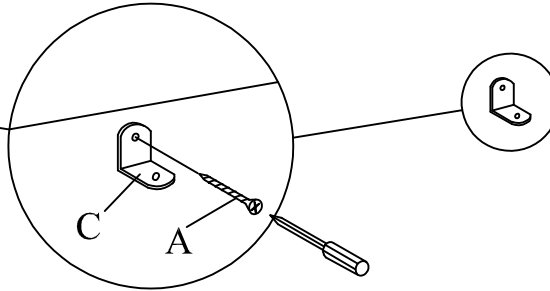
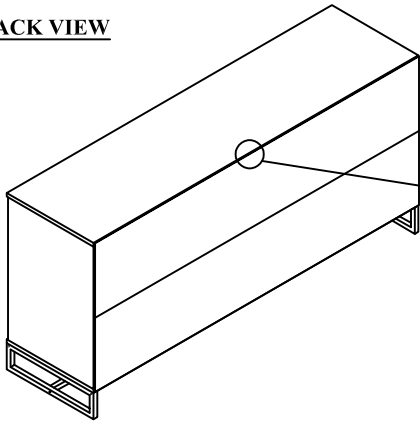
(D)



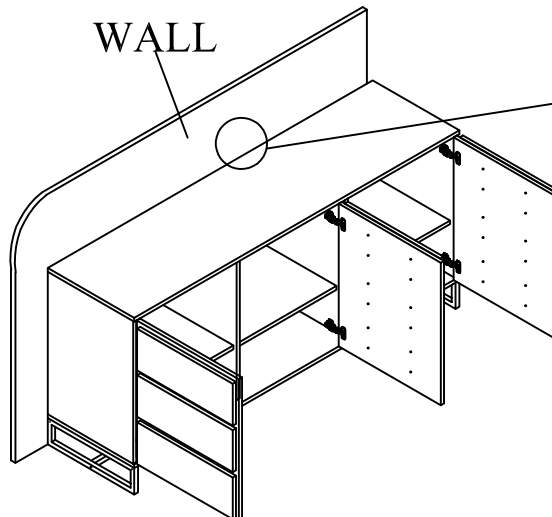
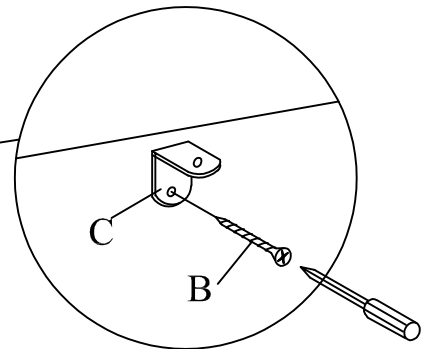
CABLE TIE  
1PC



BACK VIEW



WALL



WALL

