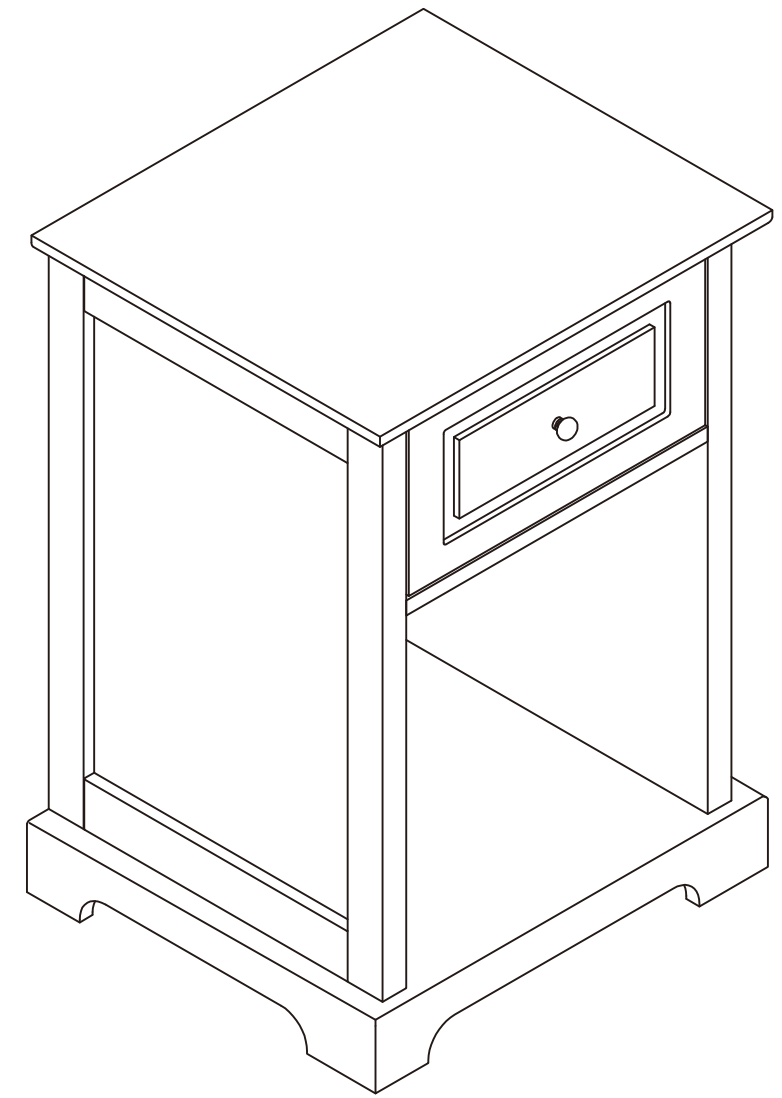
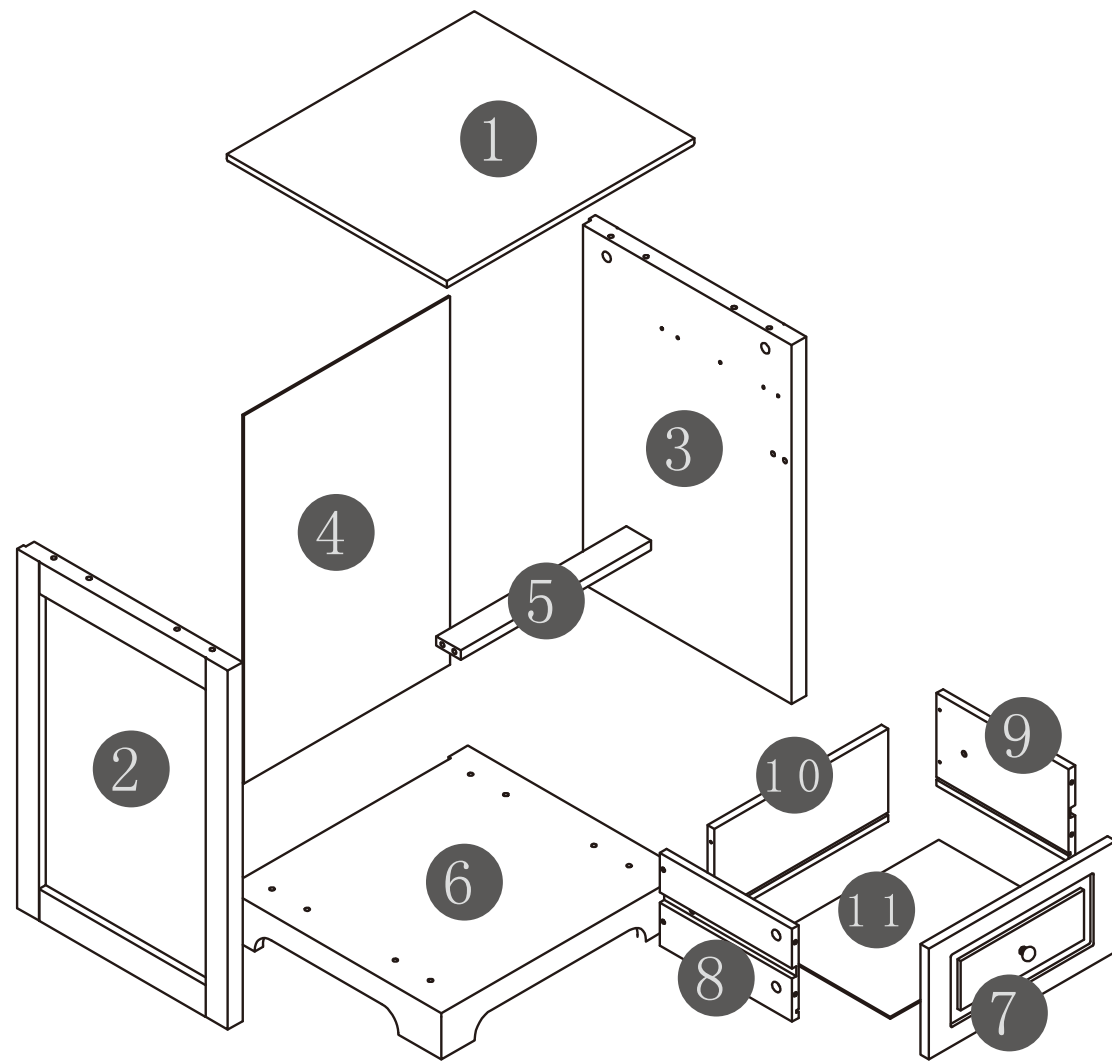


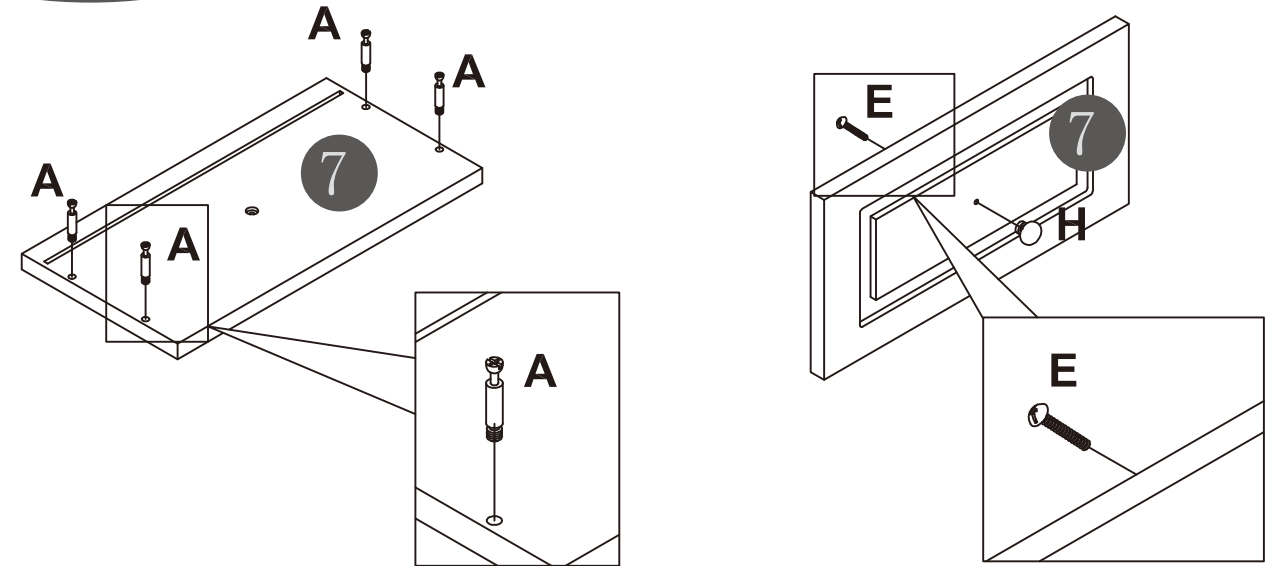
WI9023/WI9024/WI9025





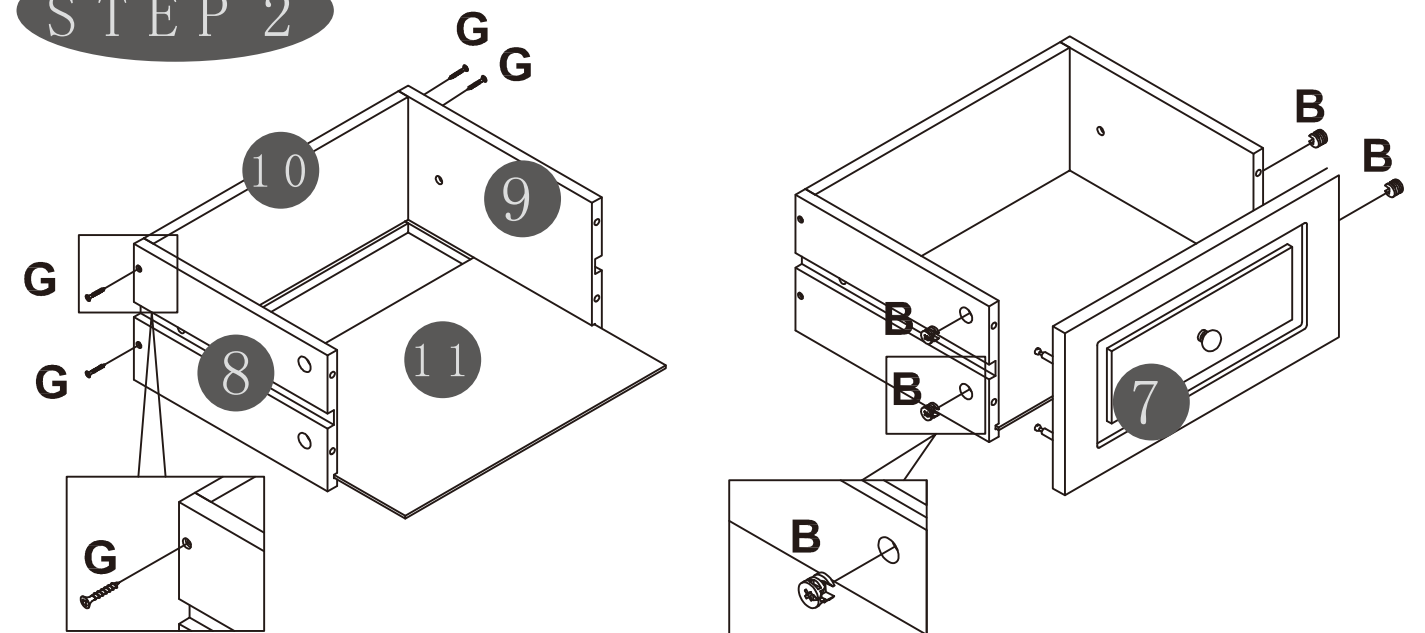
A	x10	B	x10	C	$\text{\O}4 \times 30\text{mm}$ x4	D	$\text{\O}6 \times 30\text{mm}$ x10
E	$\text{\O}4 \times 20\text{mm}$ x1	F	$\text{\O}3 \times 12\text{mm}$ x4	G	$\text{\O}4 \times 25\text{mm}$ x4	H	x1
I	L=250mm x2	J	x2	K	$\text{\O}3 \times 12\text{mm}$ x14		

STEP 1



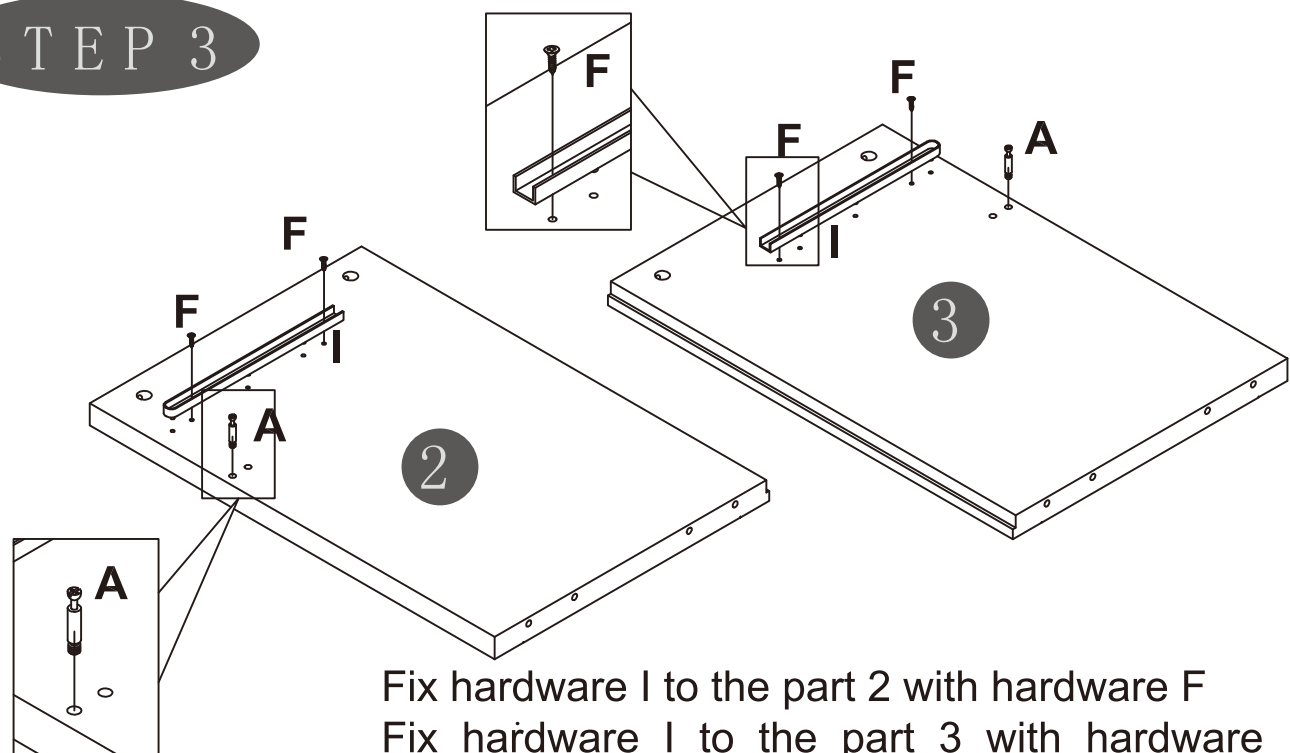
Insert hardware A to part 7 as shown
Attach hardware H to part 7 using hardware E

STEP 2



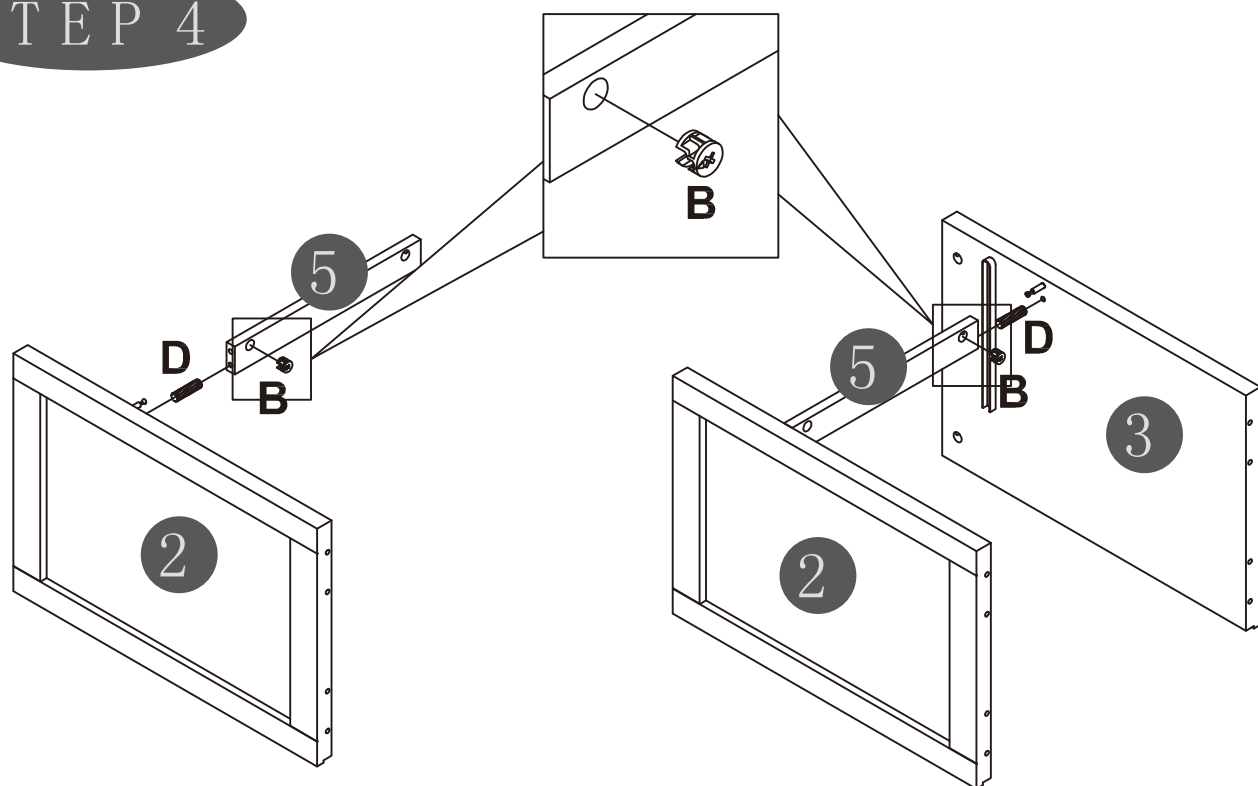
Assemble part 10 to part 8 and part 9 with hardware G
Insert part 11 to assembled unit as shown
Assemble part 7 to assembled unit by using hardware B

STEP 3



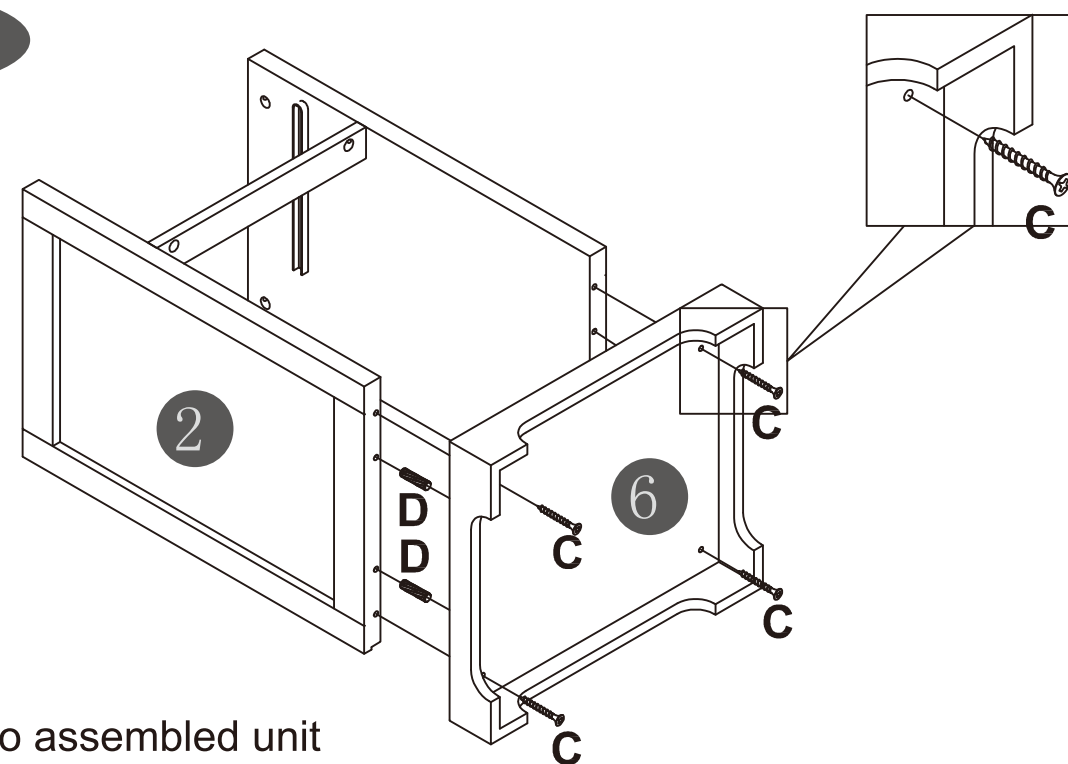
Fix hardware I to the part 2 with hardware F
 Fix hardware I to the part 3 with hardware F
 Insert the hardware A to the part 2 and part 3

STEP 4



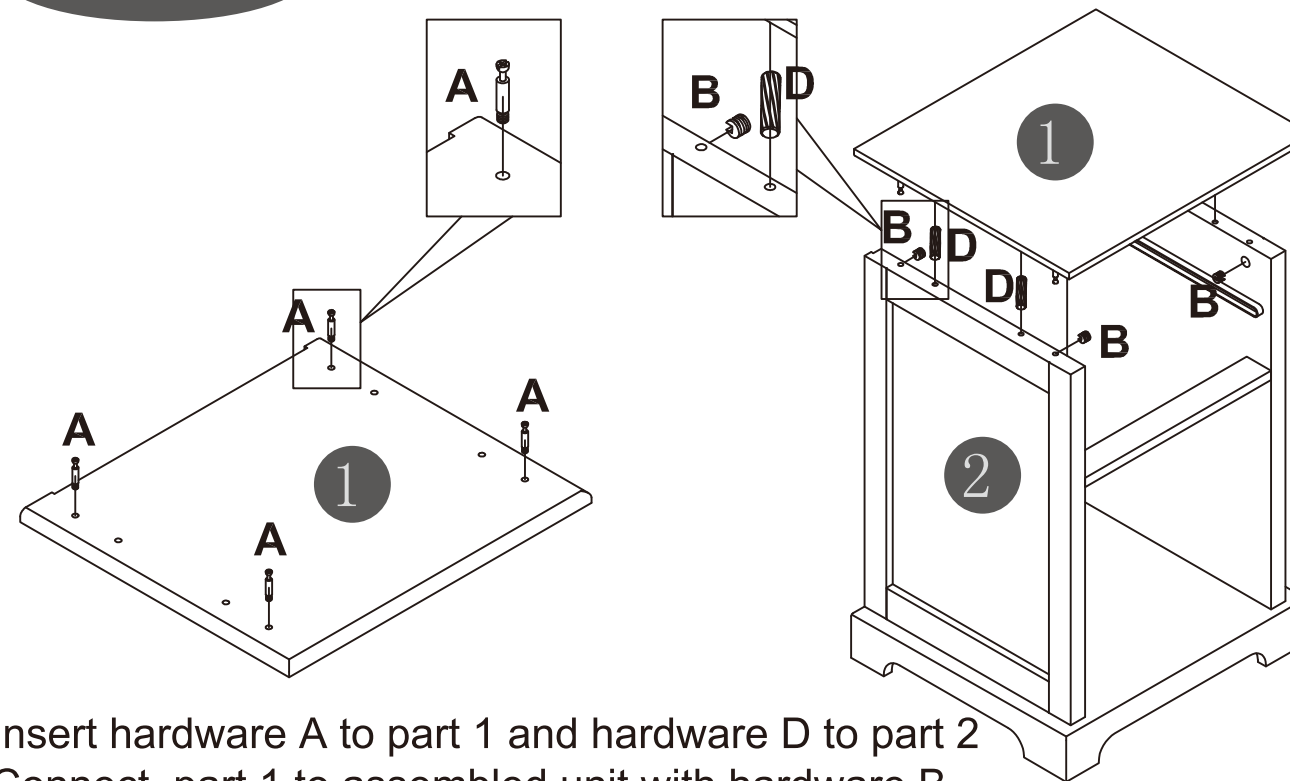
Insert hardware D to part 2 and part 3
 Assemble part 5 to part 2 and part 3 with hardware B

STEP 5



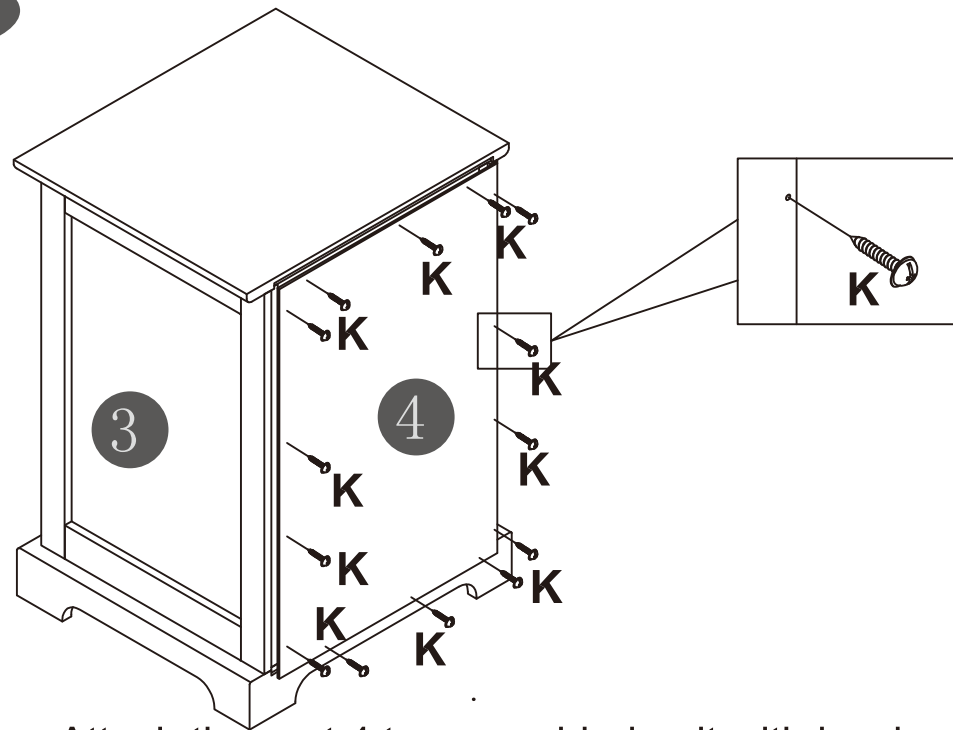
Connect Part 6 to assembled unit
 using hardware C and hardware E

STEP 6



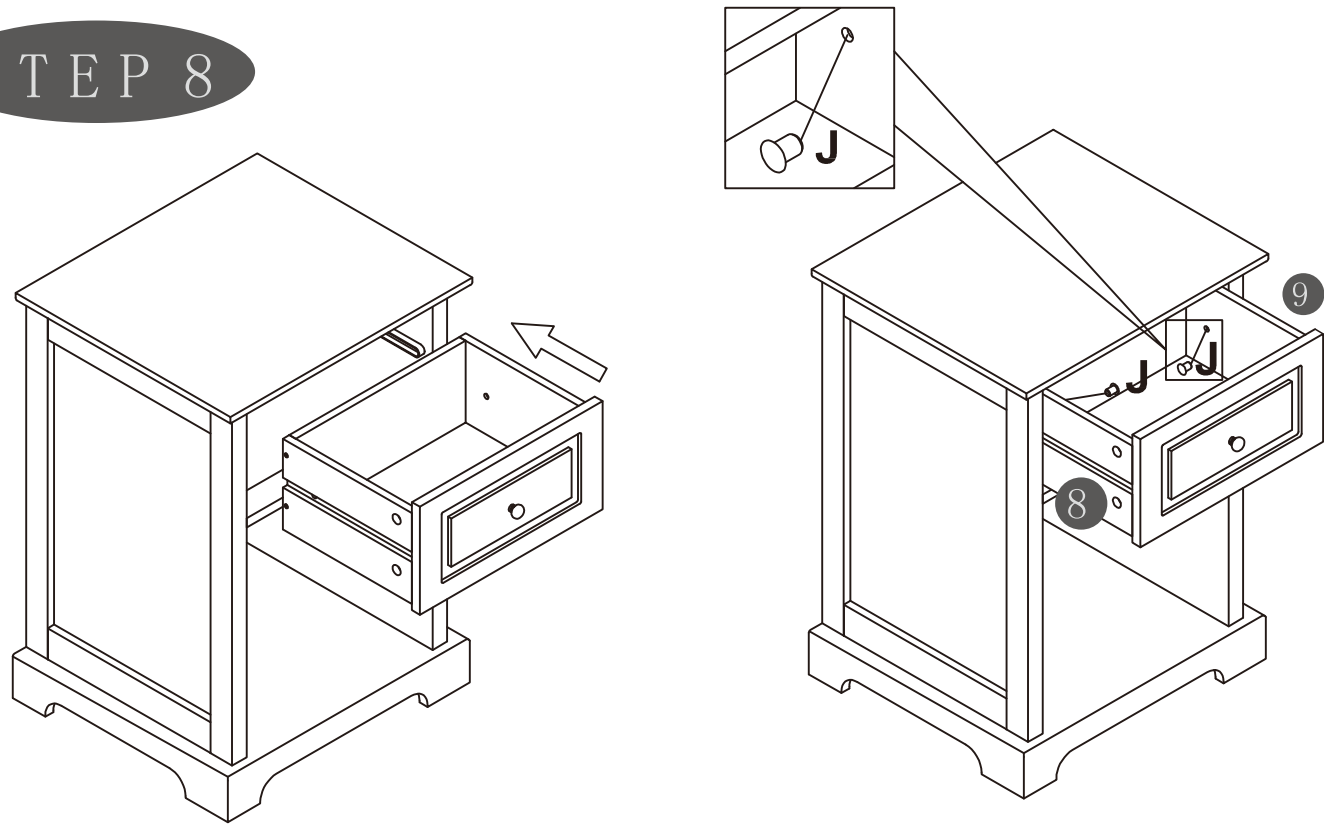
Insert hardware A to part 1 and hardware D to part 2
 Connect part 1 to assembled unit with hardware B

STEP 7



Attach the part 4 to assembled unit with hardware E

STEP 8



Insert hardware J to assembled unit as shown