

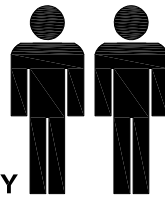
MODEL NAME:

CT 1780-00

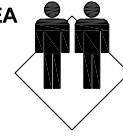
1.0hr

APPROXIMATE ASSEMBLY TIME

2 PERSON OF ASSEMBLY

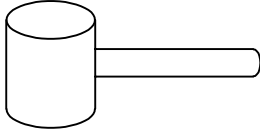


FLOOR AREA
1.5M X 1.0M

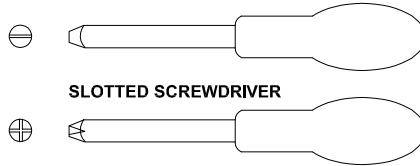


REQUIRED ASSEMBLY SPACE

REQUIRED ASSEMBLY TOOLS

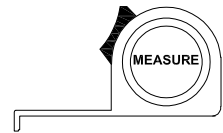


SOFT RUBBER HAMMER



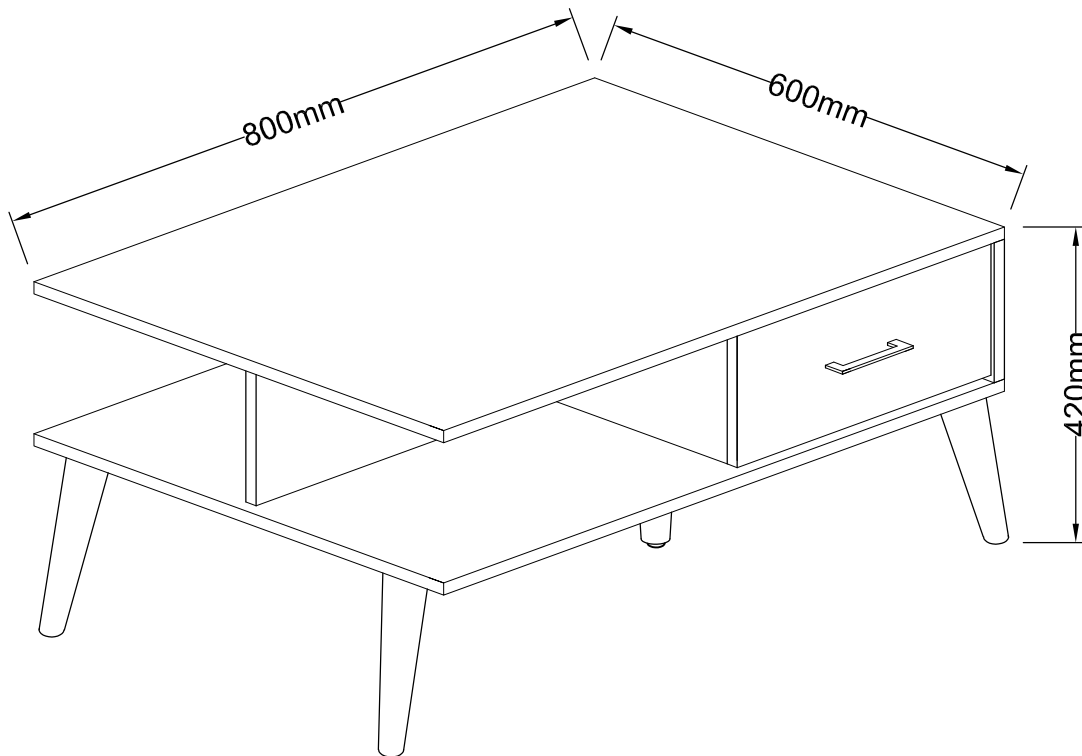
SLOTTED SCREWDRIVER

POZI SCREWDRIVER



MEASURING TAPE

ASSEMBLED DIMENSIONS



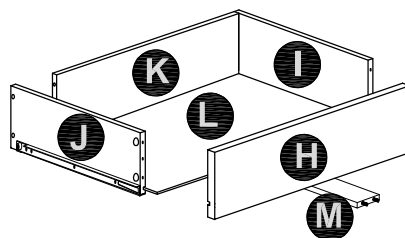
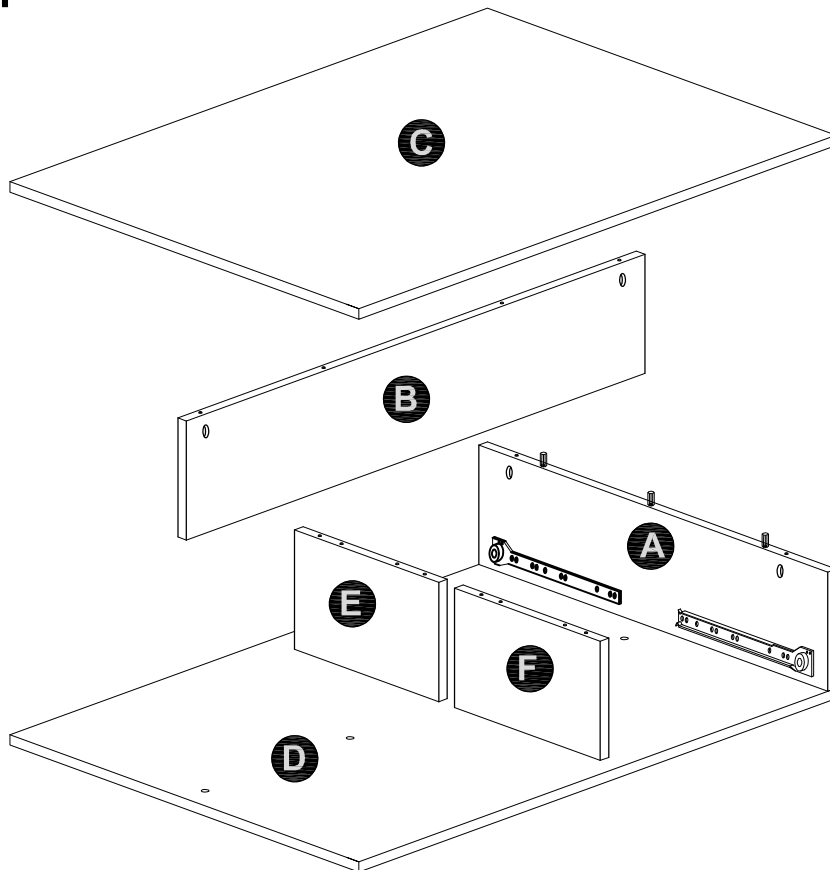
NOTE : THE MAXIMUM WEIGHT THIS PRODUCT CAN HOLD UP TO 25 KGS.

MODEL NAME:

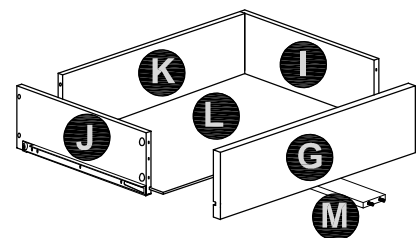
CT 1780-00

NO.	PART LIST	QTY	NO.	PART LIST	QTY
(A)	RIGHT SIDE PANEL	1	(G)	DRAWER FRONT -RIGHT	1
(B)	CENTRE SUPPORT	1	(H)	DRAWER FRONT -LEFT	1
(C)	TOP PANEL	1	(I)	DRAWER RIGHT SIDE PANEL	2
(D)	BOTTOM PANEL	1	(J)	DRAWER LEFT SIDE PANEL	2
(E)	CENTRE PANEL RIGHT	1	(K)	DRAWER BACK PANEL	2
(F)	CENTRE PANEL LEFT	1	(L)	DRAWER BASE	2
			(M)	DRAWER BOTTOM SUPPORT	2

PARTS LIST



(x1)



(x1)

MODEL NAME:

CT 1780-00

HARDWARE LIST

3cm
3cm
2cm
1cm
0cm

8X
Dia.15mm
1
LARGE CAMLOCK

20X
M4 x 16mm
2
FLAT HEAD SCREW

12X
M6.5
3
QUICKFIT

26X
Dia.6 x 30mm
4
WOOD DOWEL

1X
5
GLUE 10CC

8X
M8 x 38mm
6
FLAT HEAD SCREW

4cm
3cm
2cm
1cm
0cm

4X
M3.6 x 22mm
7
FLAT HEAD SCREW

12X
M3.5 x 25mm
8
FLAT HEAD SCREW

4X
Dia.15mm
9
DRAWER CAMLOCK

1X
M5
10
ALLEN KEY

1X
M6 x 23mm
11
ADJUSTABLE LEG

1X
Dia 17mm
12
UNIVERSAL CAP (OPTIONAL)

2X
13
HANDLE

5X
M8 x 35mm
14
ALLEN HEAD BOLT

4X
15
LEG BRACKET

1X
Dia.45/27- 234mm
16
CENTRE LEG

4X
17
Dia.45/27- 240mm
LEG

MODEL NAME:

CT 1780-00

Top Tips before you start!

1. Please check that all parts are present before you start the assembly of your furniture.
2. For ease and speed of assembly, we recommend that before you commence each step of the assembly, that you identify all the parts required for that step.
3. For larger items, please ensure that you have sufficient space and people (as indicated on page 1) to assemble your product safely
4. We recommend that, where possible, all items are assembled near to the area in which they will be placed in use, to avoid moving the product unnecessarily once assembled.
5. For the protection of your furniture, we recommend that the product is placed on a protected surface during assembly to prevent any damage.
6. During assembly please take care not to over-tighten any fittings, as this may damage the product.
7. Always place the product on a flat, steady and stable surface.
8. Do not sit or stand on the product. Do not use the product as a stepladder.
9. This product is intended for indoor, household use only as it is non industrial product.
10. This product is constructed from re-inforced hollow board. Excessive pressure causes irreparable damage. Please do not kneel on any part of this product during assembly.

Care and Maintenance of your Furniture

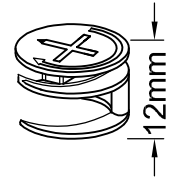
- Please periodically check all fittings and re-tighten as necessary.
- To clean your item, please use a damp cloth and wipe clean.
- Never allow any kind of liquid to remain on your furniture. Absorption can cause wood to warp or finishes to de-laminate.
- Please do not place hot items (e.g. hot drinks) directly on to the wood surface.
- Please do not drag and pull your furniture.

MODEL NAME:

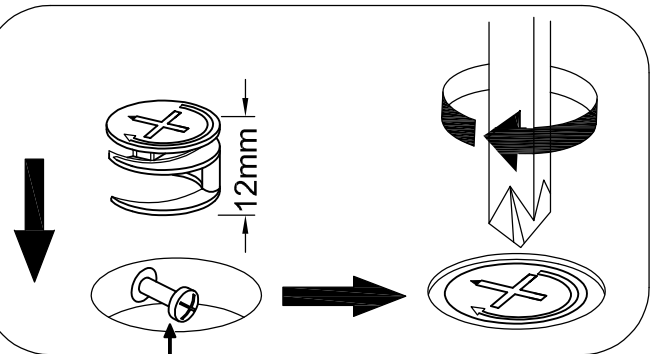
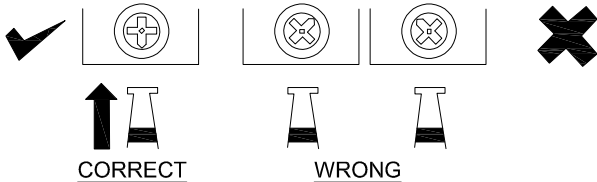
CT 1780-00

SPECIAL TIPS FOR FITTING CAM-LOCKS AND QUICKFIT

CAM-LOCK

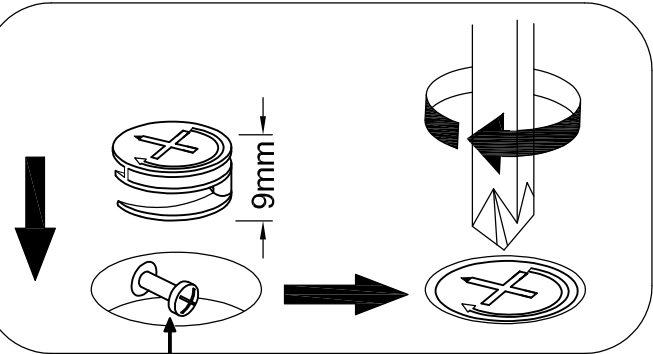
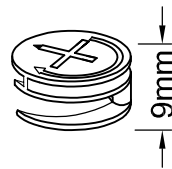


WHEN FITTING CAMLOCK
ENSURE STARTING POSITION IS CORRECT
BEFORE YOU INSERT CONNECTING QUICKFIT
TURN CLOCKWISE UNTIL SECURE



Quickfit head needs to be in centre

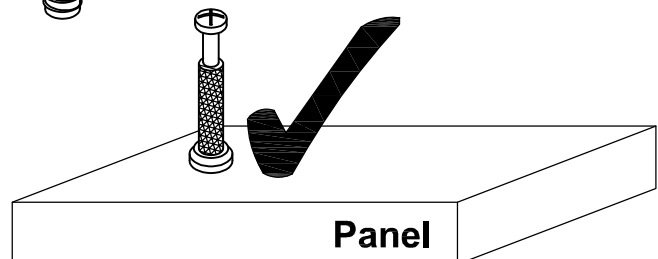
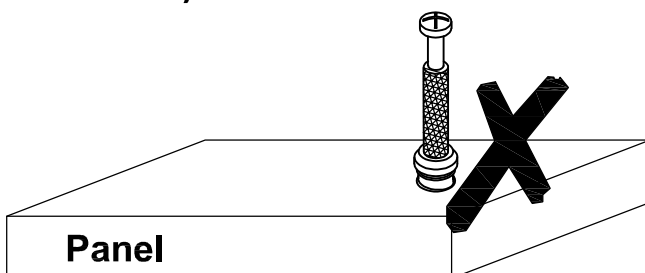
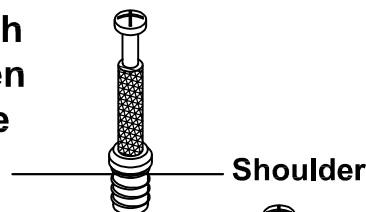
DRAWER
CAM-LOCK



Quickfit head needs to be in centre

CAM BOLT

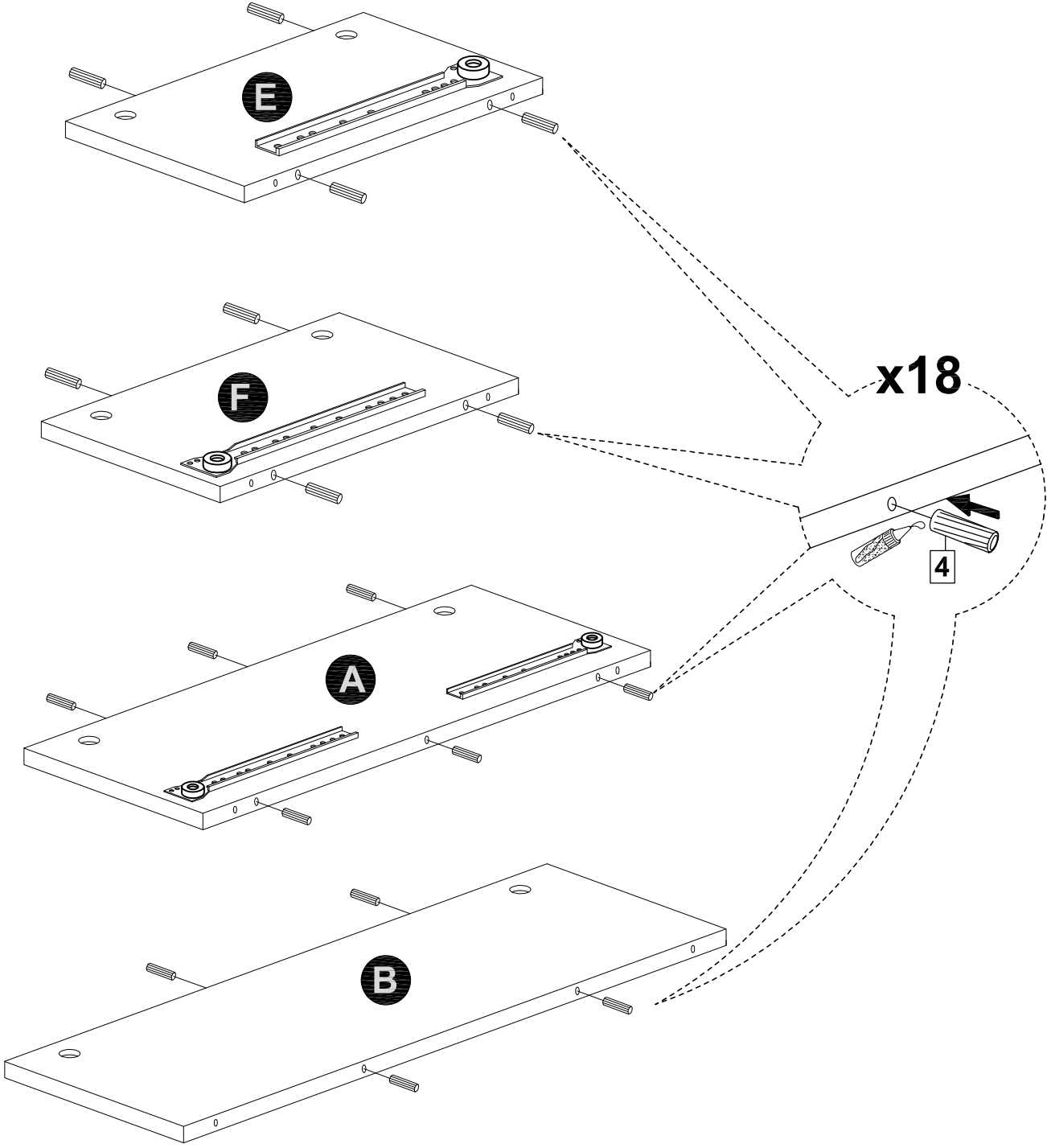
Tighten until shoulder is flush
with panel. Do not overtighten
or undertighten (see example
below)



MODEL NAME:

CT 1780-00

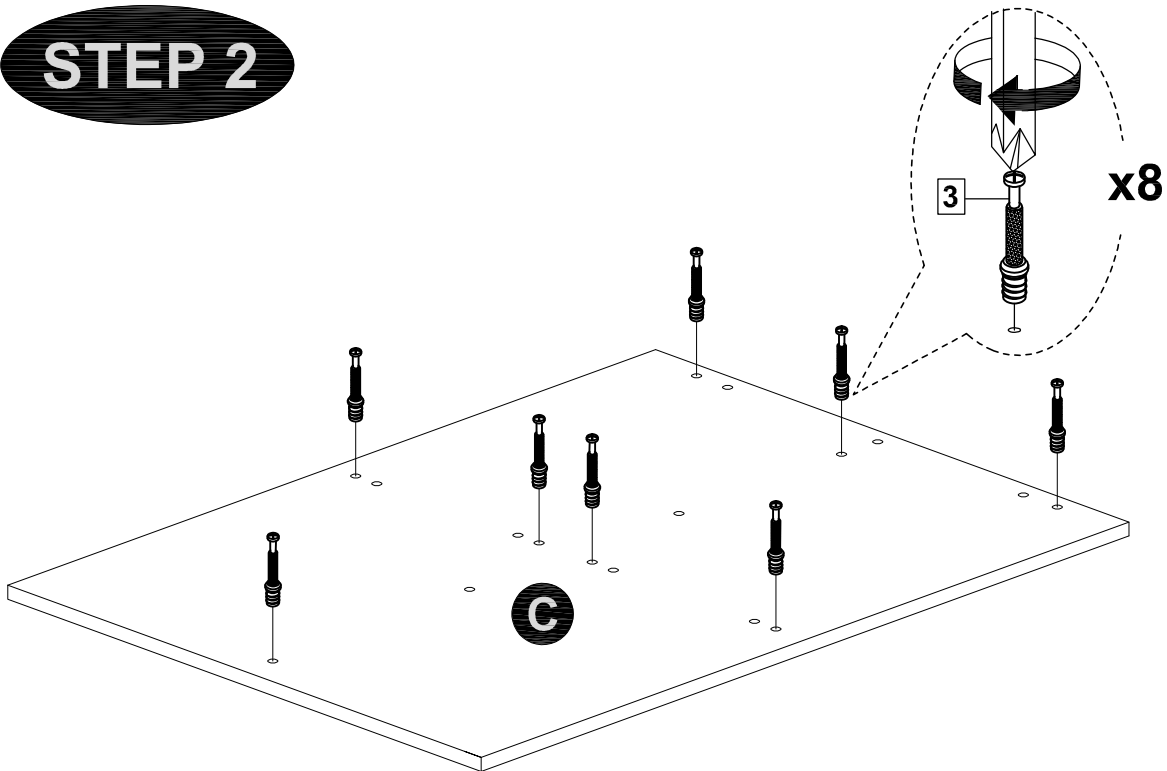
STEP 1



MODEL NAME:

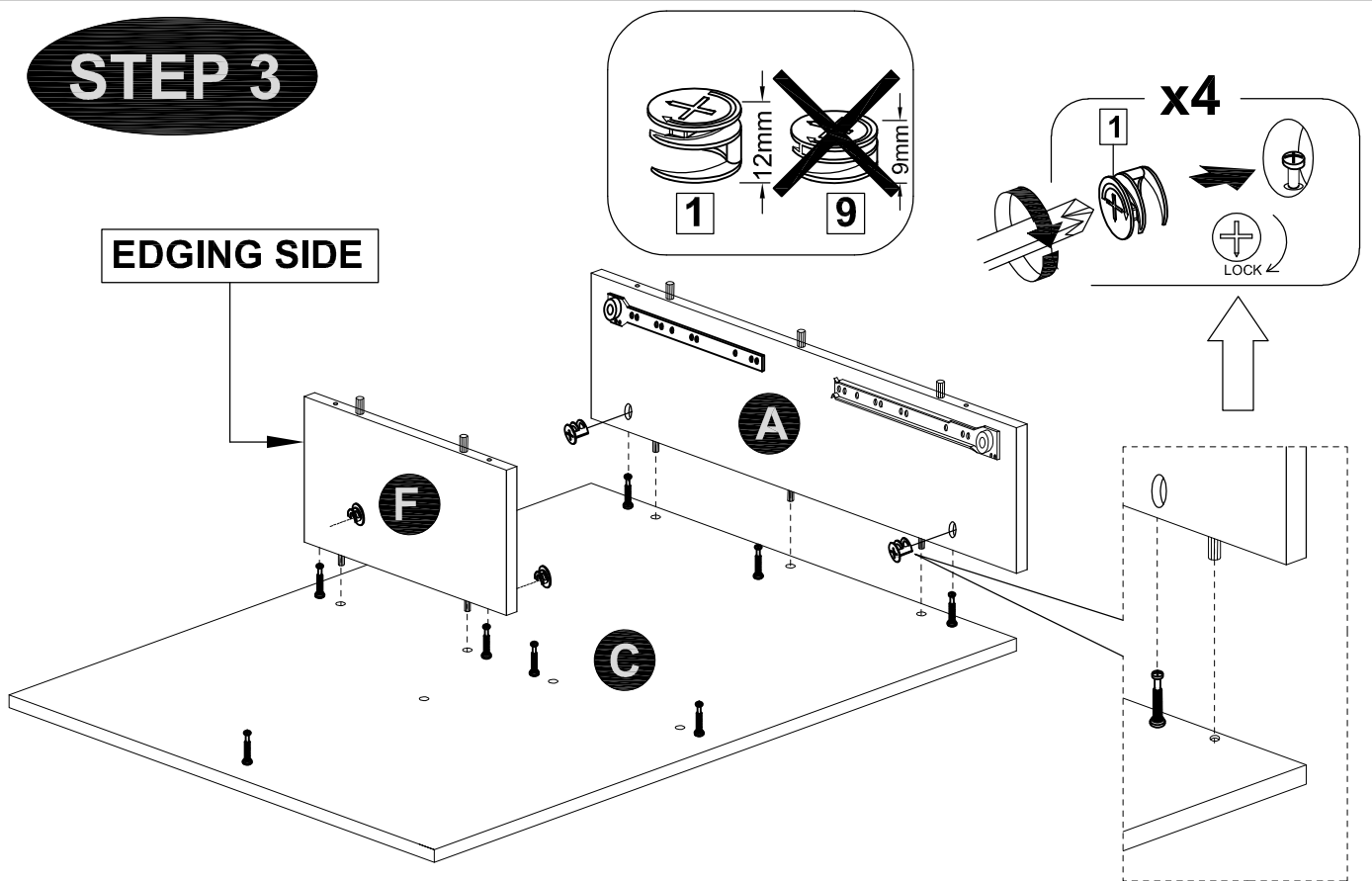
CT 1780-00

STEP 2



STEP 3

EDGING SIDE

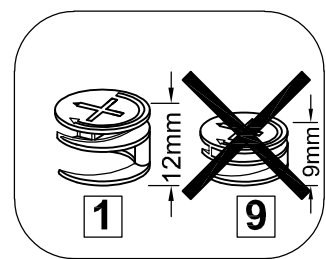
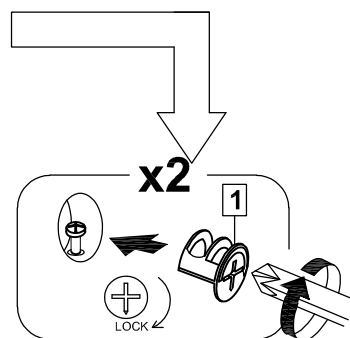
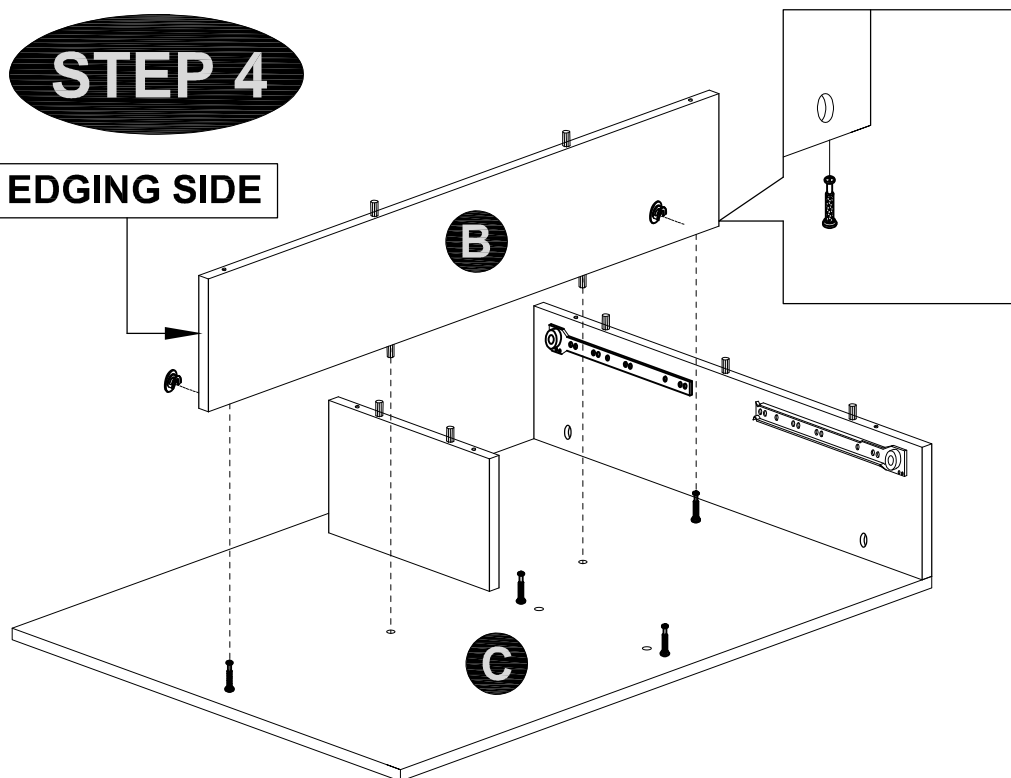


MODEL NAME:

CT 1780-00

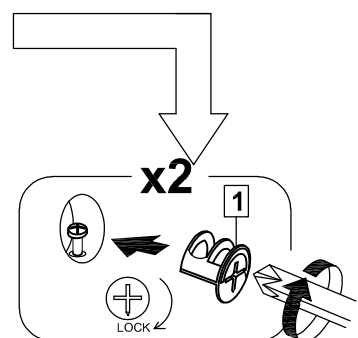
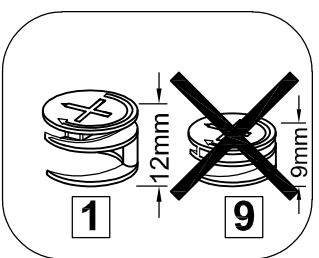
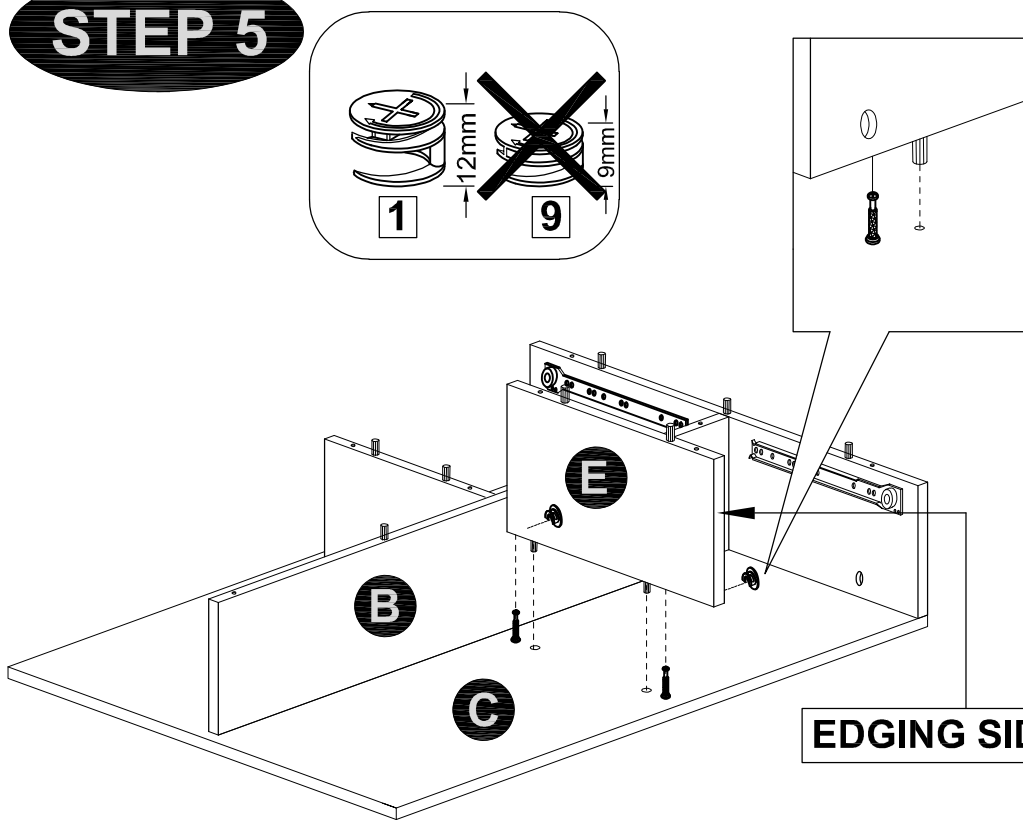
STEP 4

EDGING SIDE



STEP 5

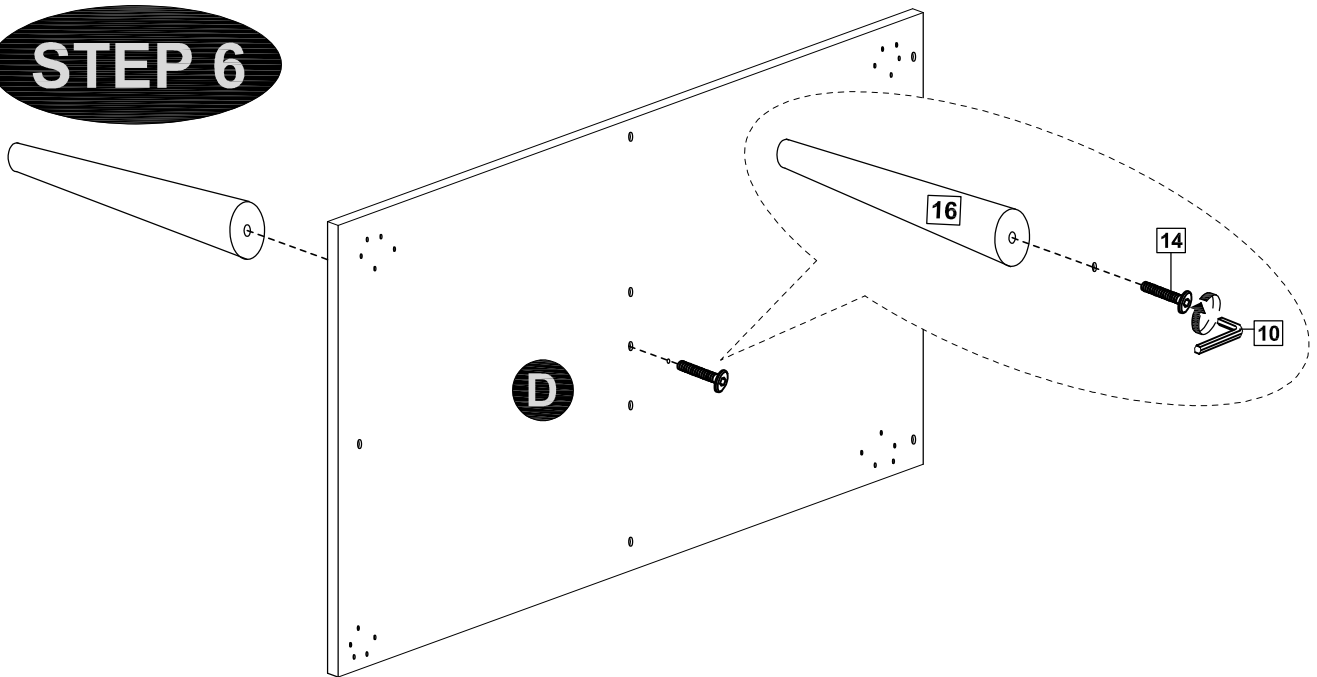
EDGING SIDE



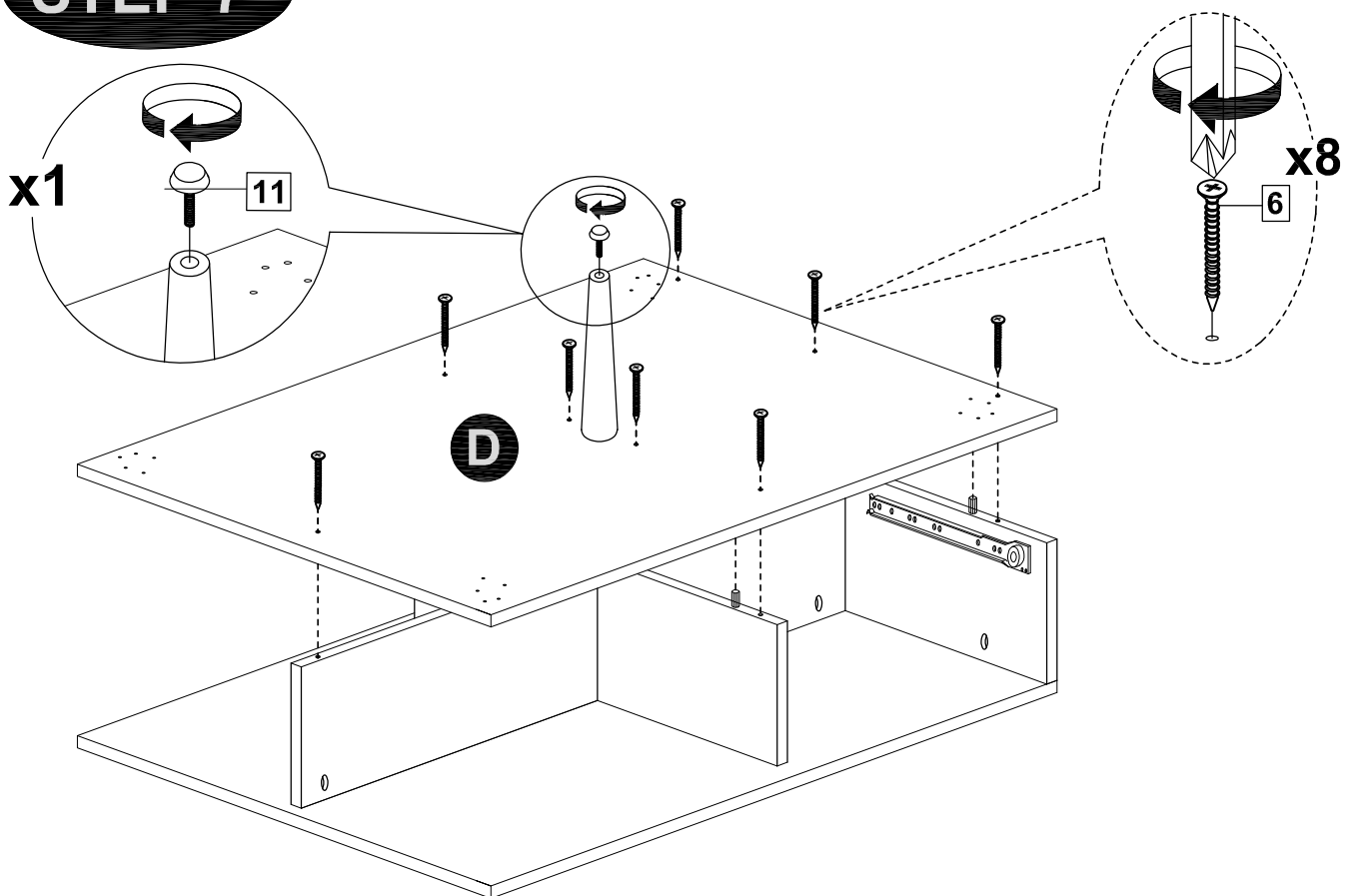
MODEL NAME:

CT 1780-00

STEP 6



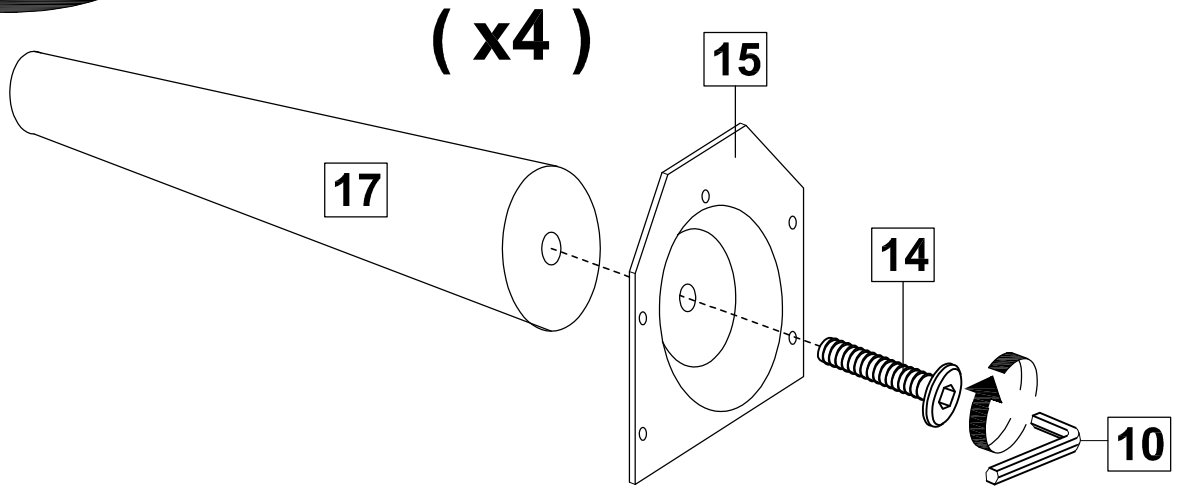
STEP 7



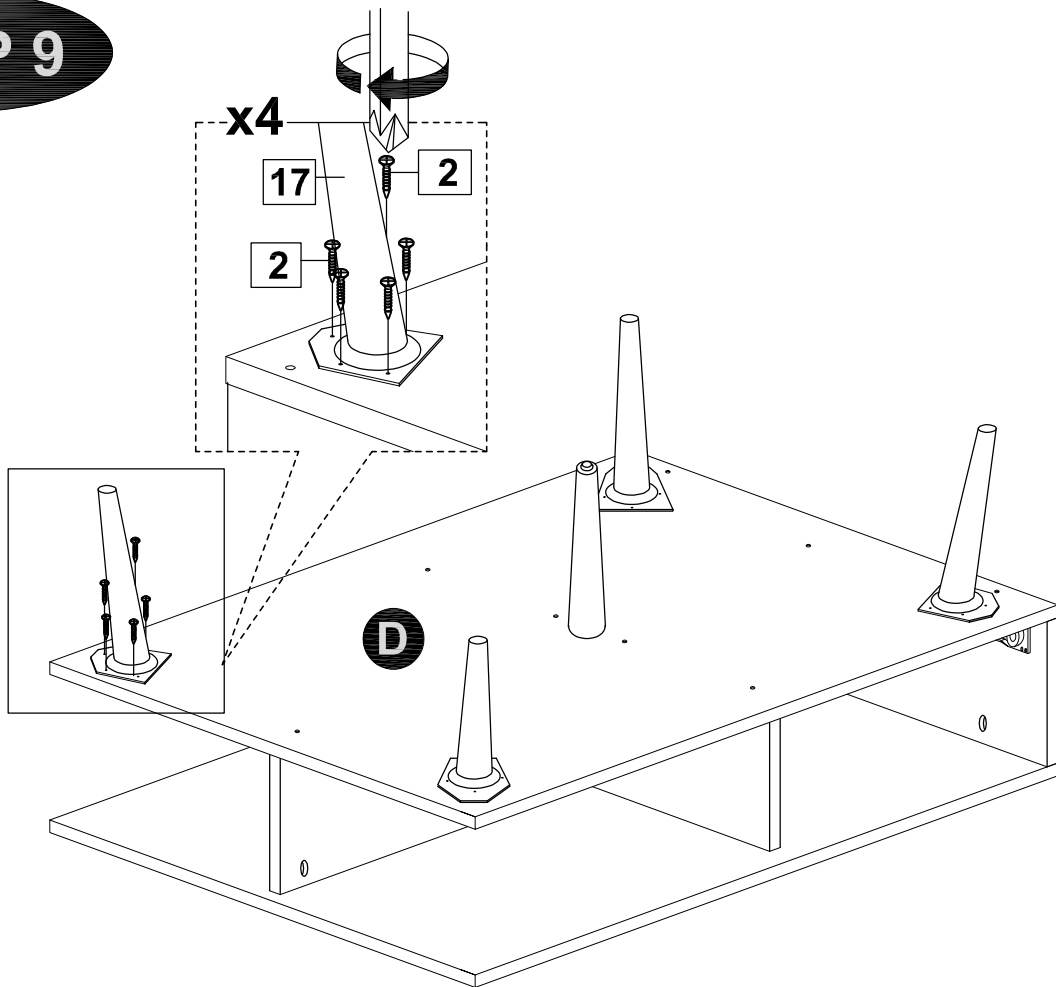
MODEL NAME:

CT 1780-00

STEP 8



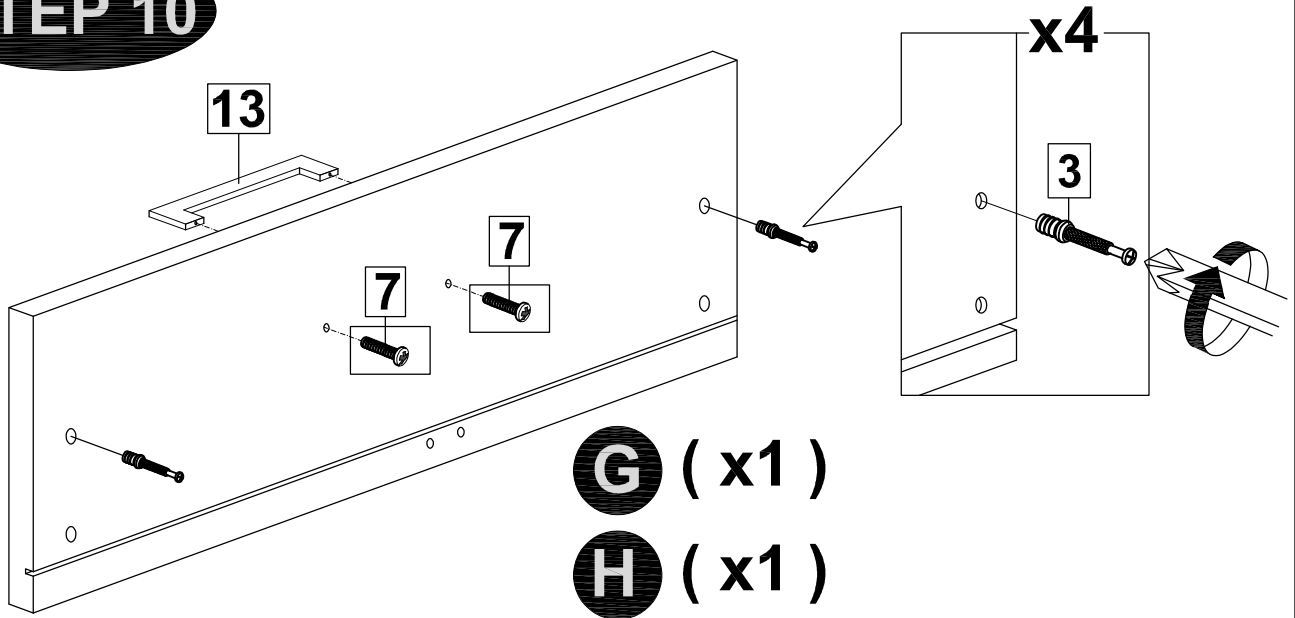
STEP 9



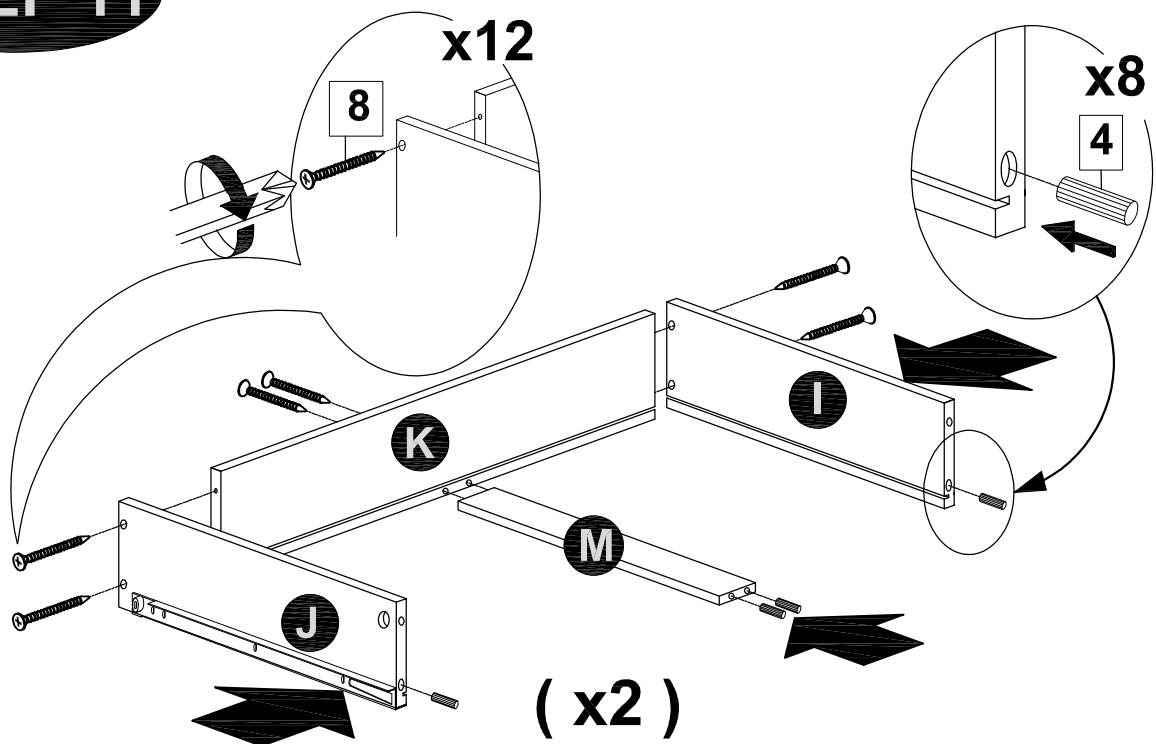
MODEL NAME:

CT 1780-00

STEP 10



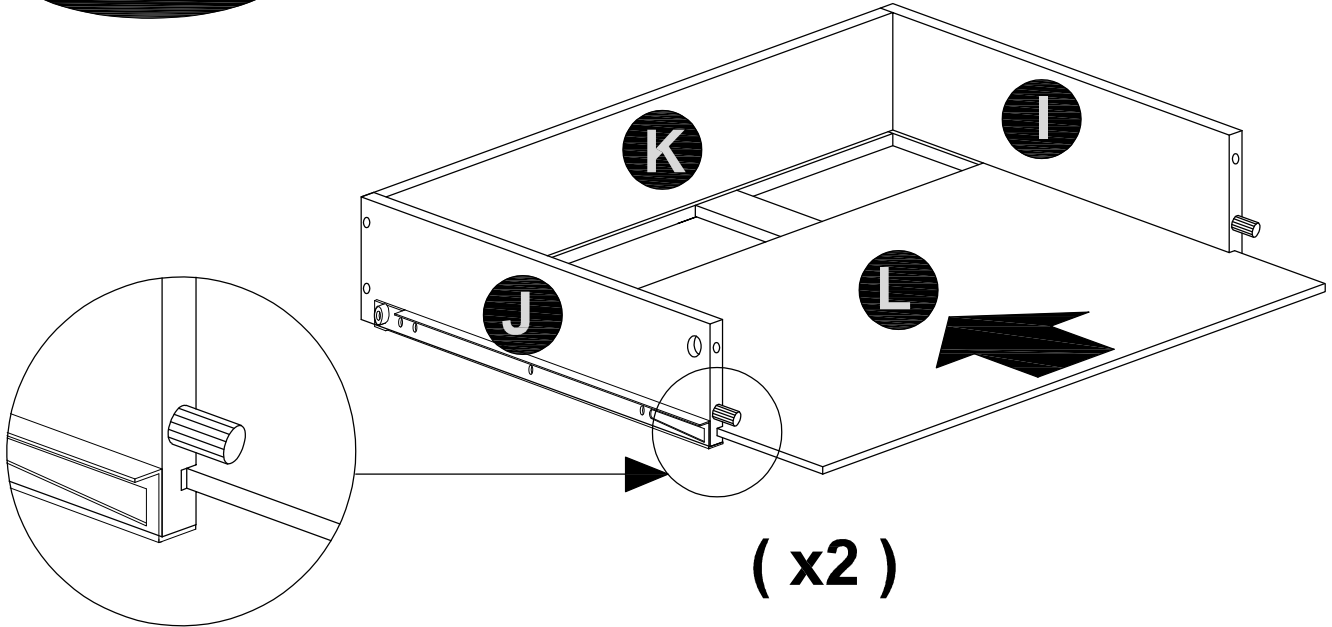
STEP 11



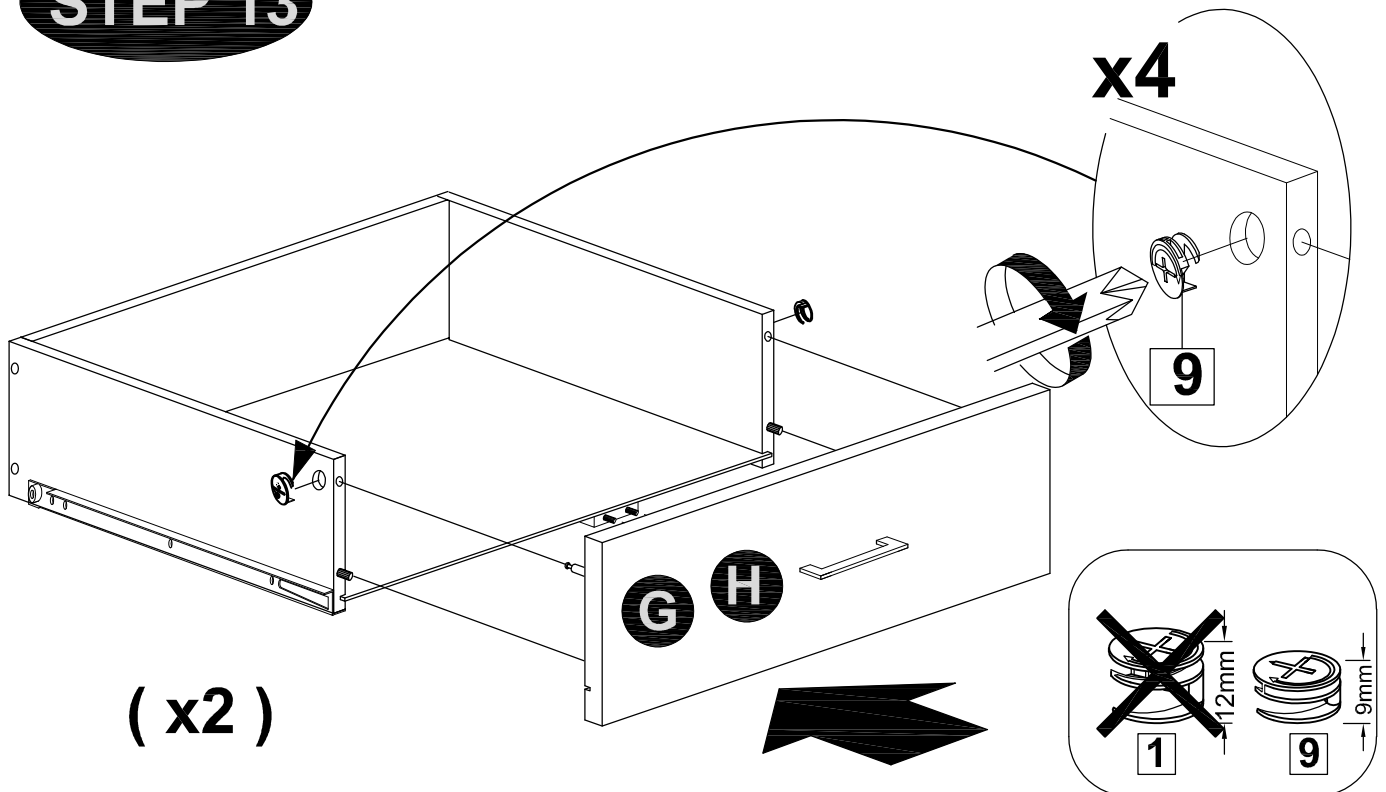
MODEL NAME:

CT 1780-00

STEP 12



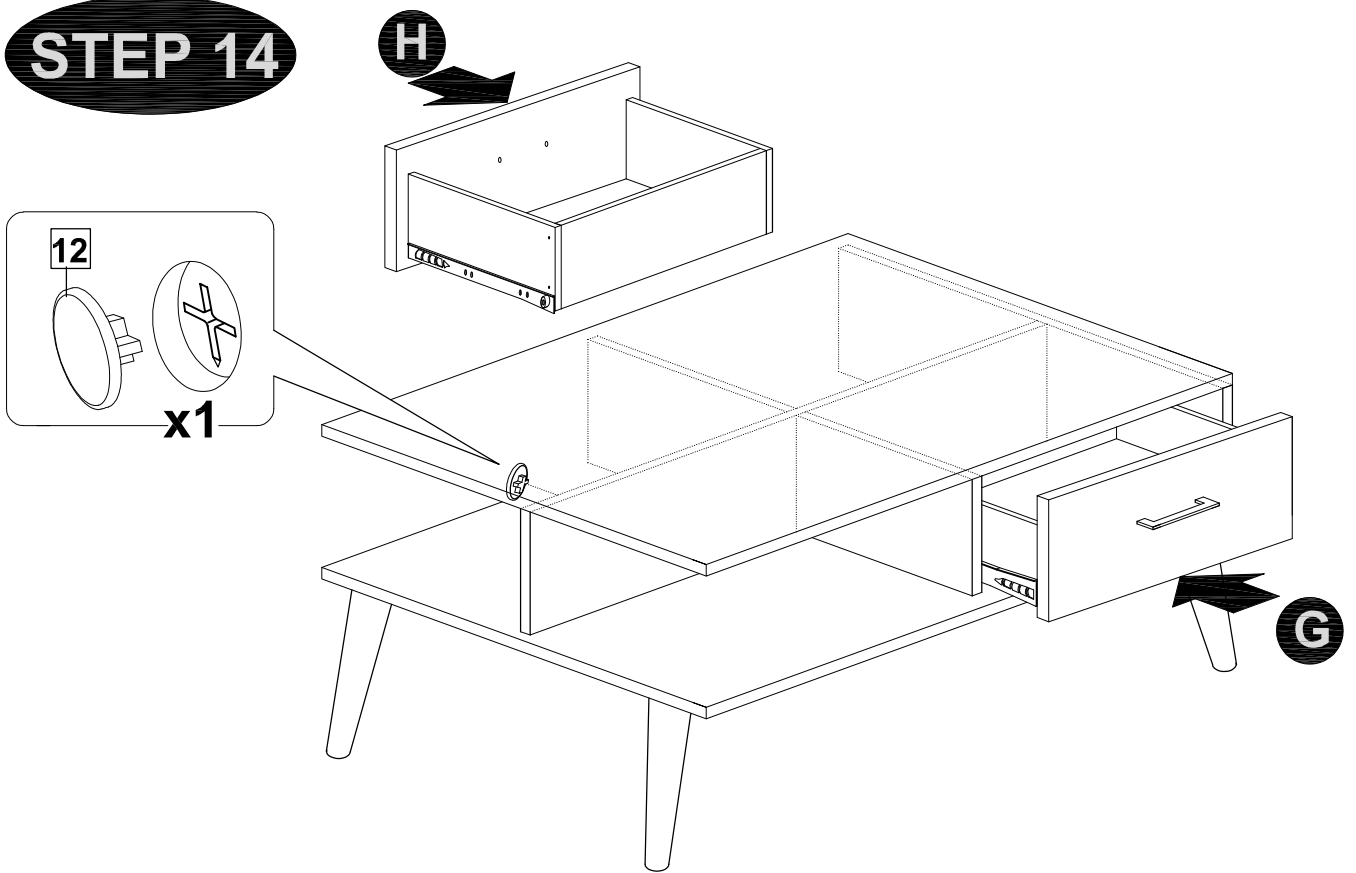
STEP 13



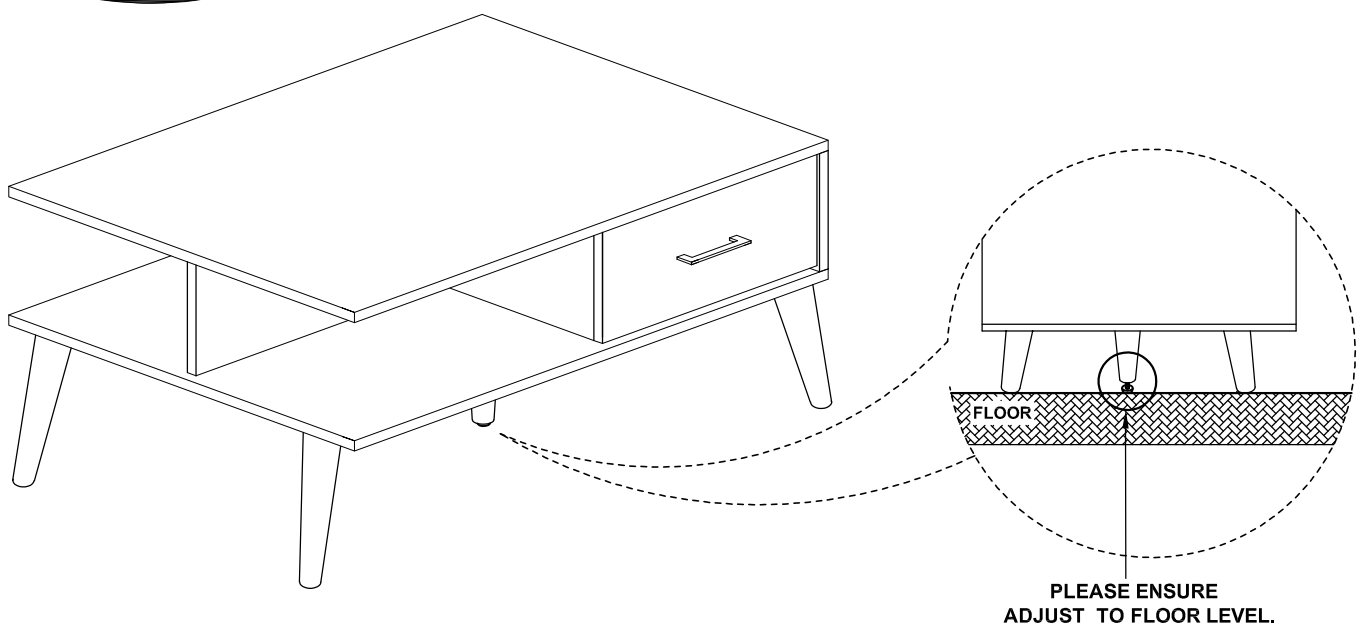
MODEL NAME:

CT 1780-00

STEP 14



STEP 15



MODEL NAME:

CT 1780-00

STEP 16

