

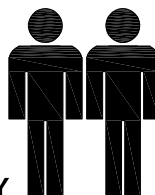
MODEL NAME:

BC 7590-00

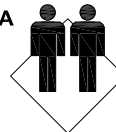
1.5hr

APPROXIMATE ASSEMBLY TIME

2 PERSON OF ASSEMBLY

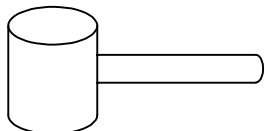


FLOOR AREA
1.5M X 1.0M

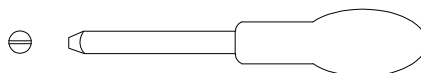


REQUIRED ASSEMBLY SPACE

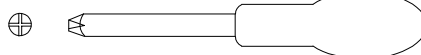
REQUIRED ASSEMBLY TOOLS



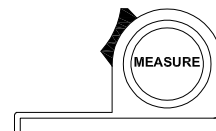
SOFT RUBBER HAMMER



SLOTTED SCREWDRIVER



POZI SCREWDRIVER



MEASURING TAPE

ASSEMBLED DIMENSIONS



NOTE : THE MAXIMUM WEIGHT THIS PRODUCT CAN HOLD UP TO 25 KGS.

MODEL NAME:

BC 7590-00

NO. PART LIST

- (A) RIGHT SIDE PANEL
- (B) LEFT SIDE PANEL
- (C) TOP PANEL
- (D) BOTTOM PANEL
- (E) FIXED SHELF- A
- (F) FIXED SHELF- B
- (G) CENTRE DIVIDER - A
- (H) CENTRE DIVIDER - B
- (I) RIGHT DOOR PANEL
- (J) LEFT DOOR PANEL
- (K) BACK PANEL

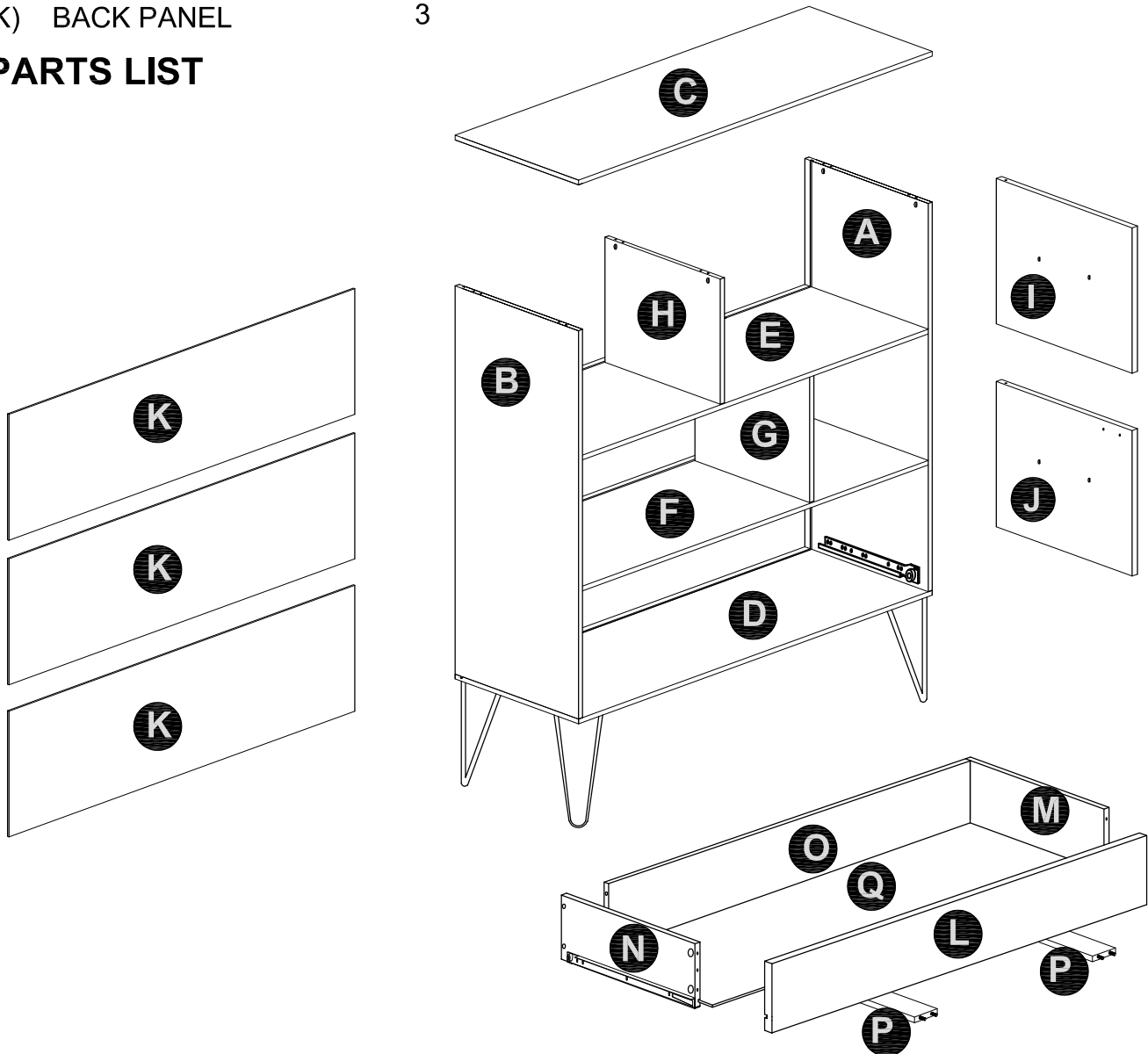
QTY NO. PART LIST

- 1 (L) DRAWER FRONT
- 1 (M) DRAWER RIGHT SIDE PANEL
- 1 (N) DRAWER LEFT SIDE PANEL
- 1 (O) DRAWER BACK PANEL
- 1 (P) DRAWER BOTTOM SUPPORT
- 2 (Q) DRAWER BASE

QTY

- 1
- 1
- 1
- 1
- 2
- 1

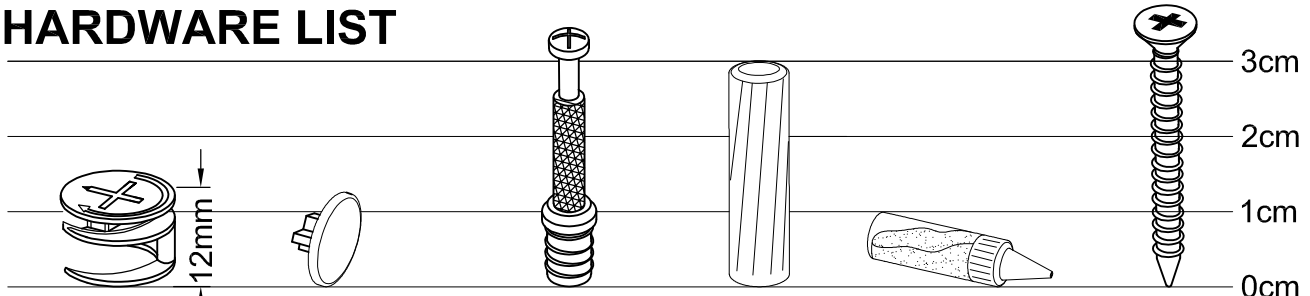
PARTS LIST



MODEL NAME:

BC 7590-00

HARDWARE LIST



16X
Dia.15mm
1
LARGE
CAMLOCK

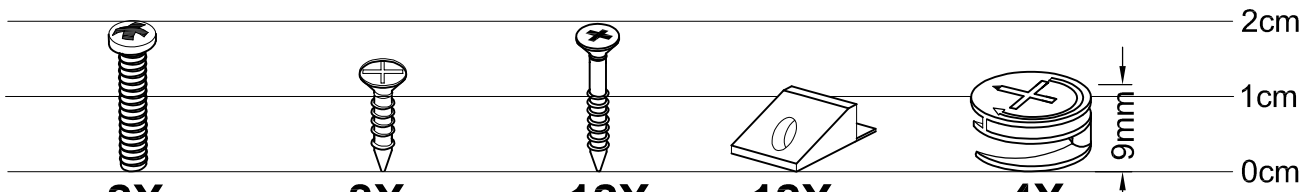
2X
Dia 17mm
2
UNIVERSAL CAP
(OPTIONAL)

20X
M6.5
3
QUICKFIT

30X
Dia.6 x 30mm
4
WOOD
DOWEL

2X
5
GLUE 10CC

8X
M8 x 38mm
6
FLAT HEAD
SCREW



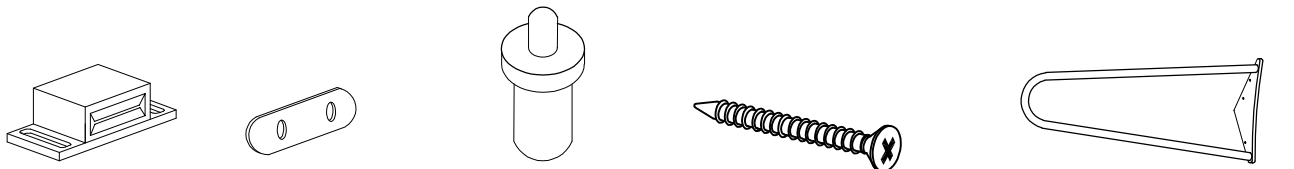
2X
M4 x 19mm
7
PAN HEAD
SCREW

8X
M3.5 x 12mm
8
FLAT HEAD
SCREW

12X
M3 x 20mm
9
FLAT HEAD
SCREW

12X
10
BACKPLY
STOPPER

4X
Dia.15mm
11
DRAWER
CAMLOCK



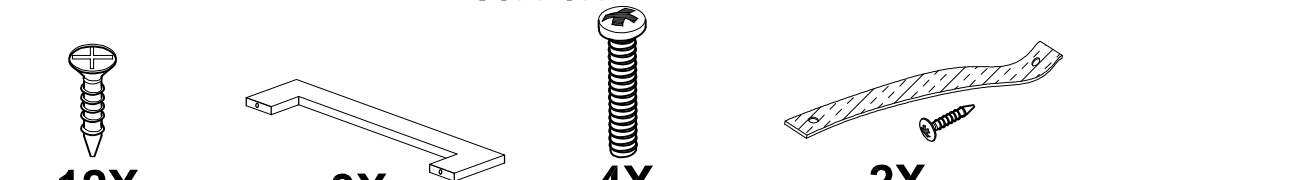
2X
M43 x 13mm
12
MAGNET

2X
M43 x 12mm
13
WASHER

4X
Dia.10 x 22.5mm
14
SPRING DOOR
SUPPORT

10X
M3.5 x 25mm
15
FLAT HEAD SCREW

4X
240MM
16
METAL LEG



12X
M3.5 x 16mm
17
FLAT HEAD
SCREW

3X
18
HANDLE

4X
M4 x 16mm
19
PAN HEAD
SCREW

2X
20
ANTI TIP
STRAP

MODEL NAME:

BC 7590-00

Top Tips before you start!

1. Please check that all parts are present before you start the assembly of your furniture.
2. For ease and speed of assembly, we recommend that before you commence each step of the assembly, that you identify all the parts required for that step.
3. For larger items, please ensure that you have sufficient space and people (as indicated on page 1) to assemble your product safely
4. We recommend that, where possible, all items are assembled near to the area in which they will be placed in use, to avoid moving the product unnecessarily once assembled.
5. For the protection of your furniture, we recommend that the product is placed on a protected surface during assembly to prevent any damage.
6. During assembly please take care not to over-tighten any fittings, as this may damage the product.
7. Always place the product on a flat, steady and stable surface.
8. Do not sit or stand on the product. Do not use the product as a stepladder.
9. This product is intended for indoor, household use only as it is non industrial product.
10. This product is constructed from re-inforced hollow board. Excessive pressure causes irreparable damage. Please do not kneel on any part of this product during assembly.

Care and Maintenance of your Furniture

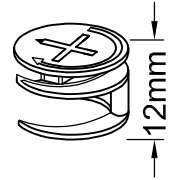
- Please periodically check all fittings and re-tighten as necessary.
- To clean your item, please use a damp cloth and wipe clean.
- Never allow any kind of liquid to remain on your furniture. Absorption can cause wood to warp or finishes to de-laminate.
- Please do not place hot items (e.g. hot drinks) directly on to the wood surface.
- Please do not drag and pull your furniture.

MODEL NAME:

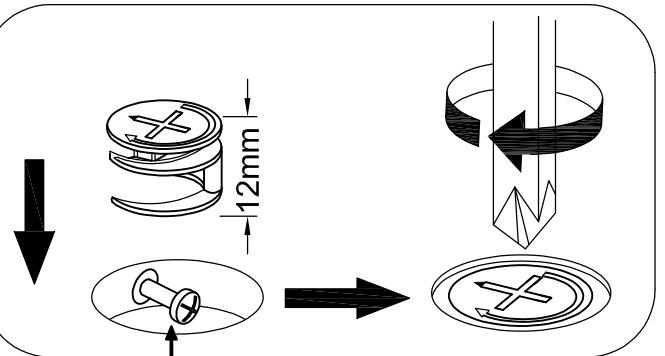
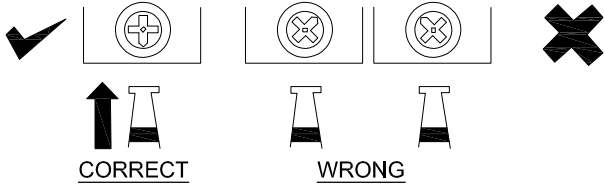
BC 7590-00

SPECIAL TIPS FOR FITTING CAM-LOCKS AND QUICKFIT

CAM-LOCK

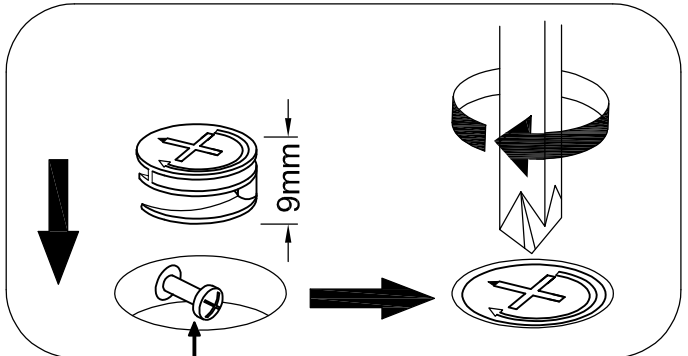
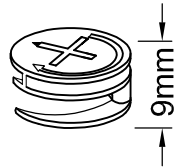


WHEN FITTING CAMLOCK
ENSURE STARTING POSITION IS CORRECT
BEFORE YOU INSERT CONNECTING QUICKFIT
TURN CLOCKWISE UNTIL SECURE



Quickfit head needs to be in centre

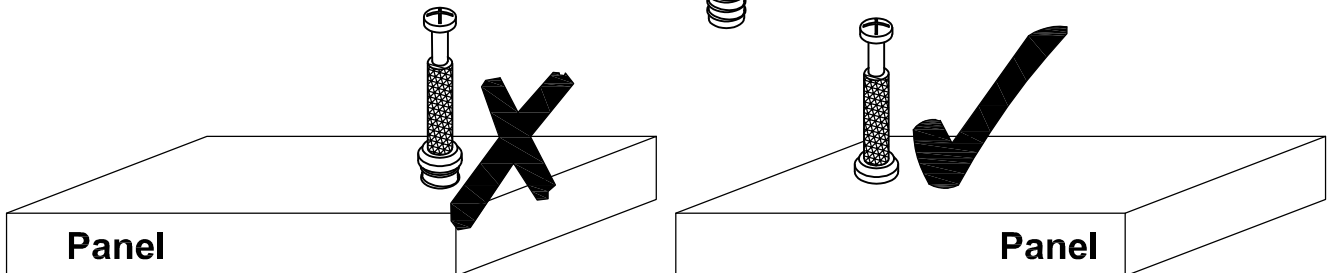
DRAWER
CAM-LOCK



Quickfit head needs to be in centre

CAM BOLT

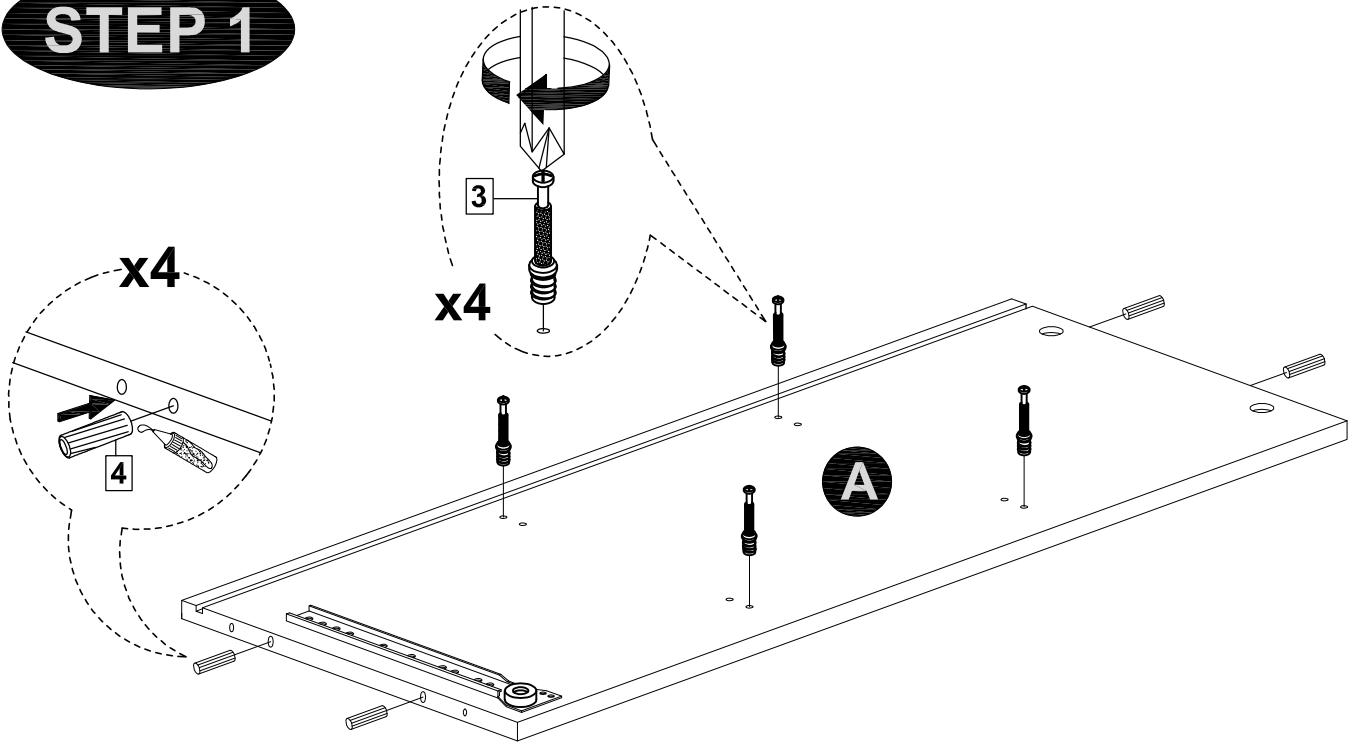
Tighten until shoulder is flush with panel. Do not overtighten or undertighten (see example below)



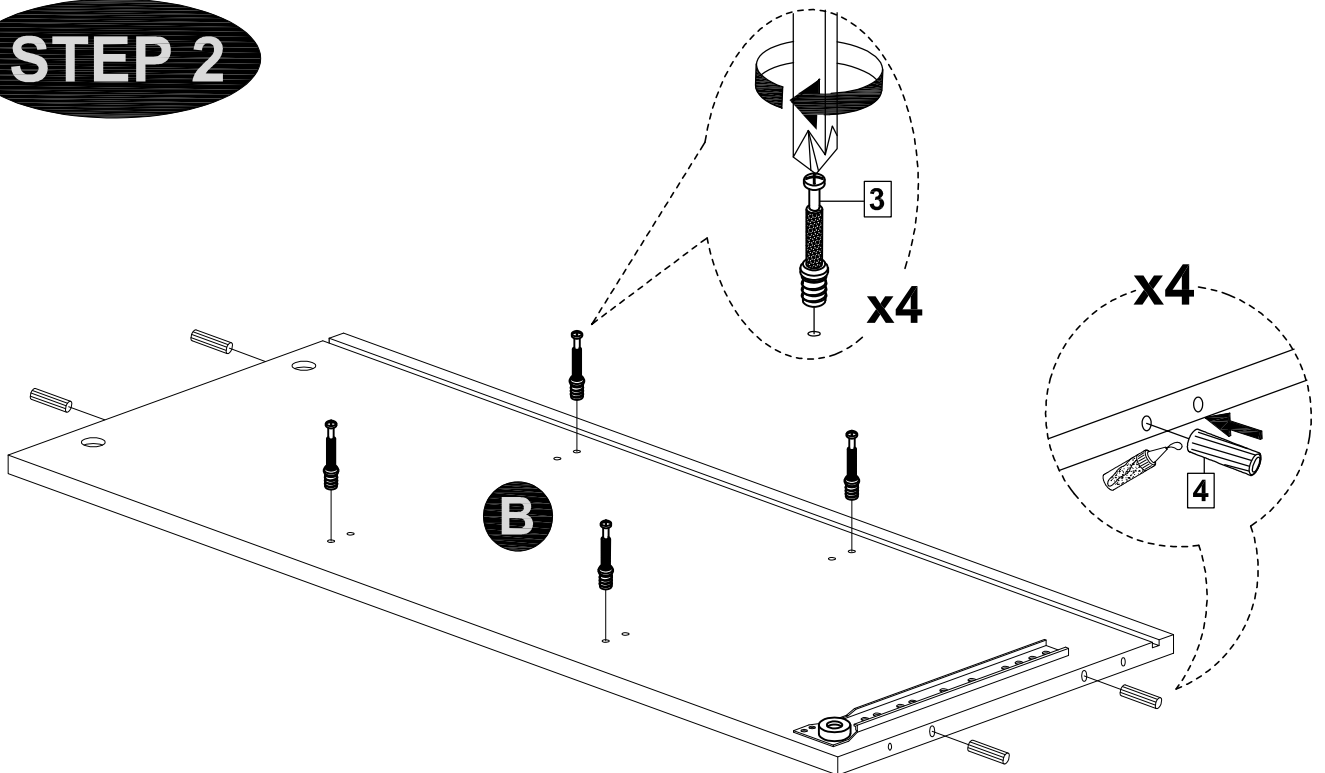
MODEL NAME:

BC 7590-00

STEP 1



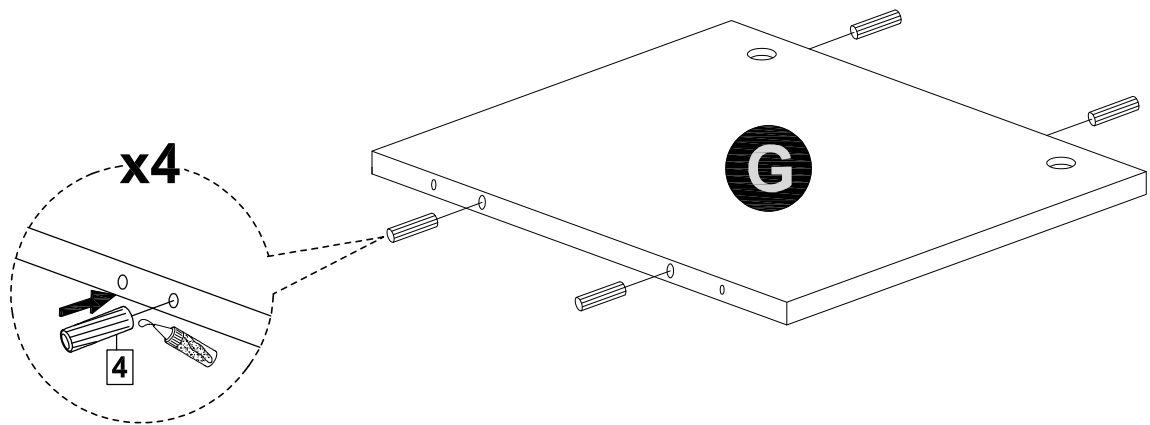
STEP 2



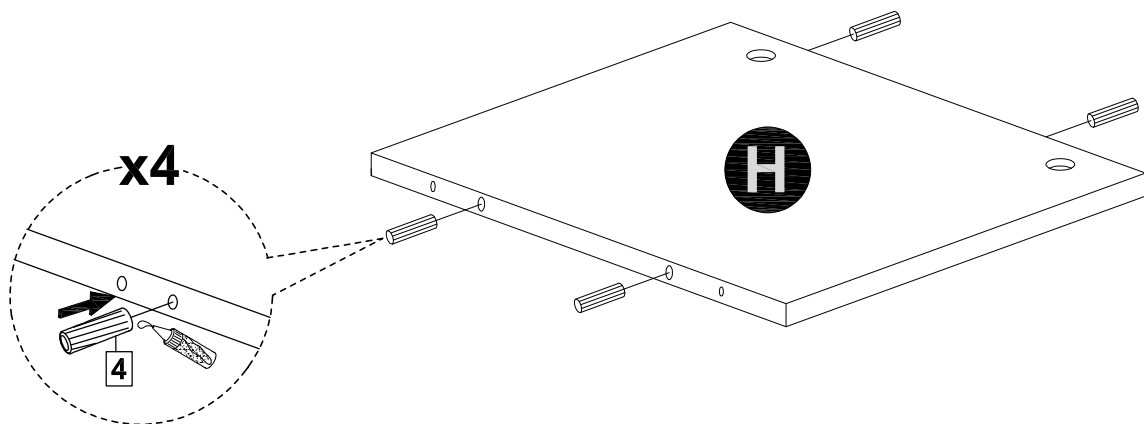
MODEL NAME:

BC 7590-00

STEP 3



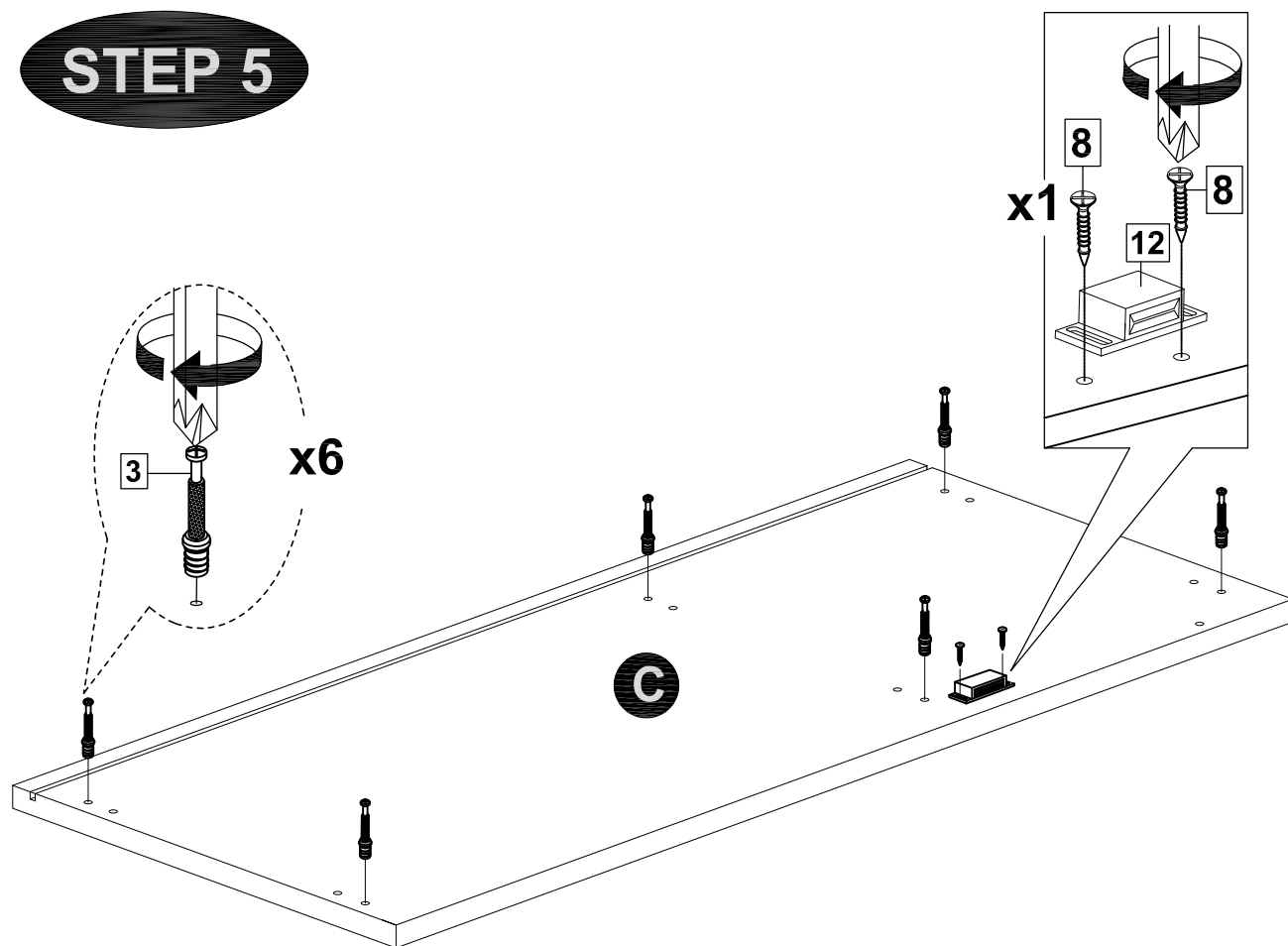
STEP 4



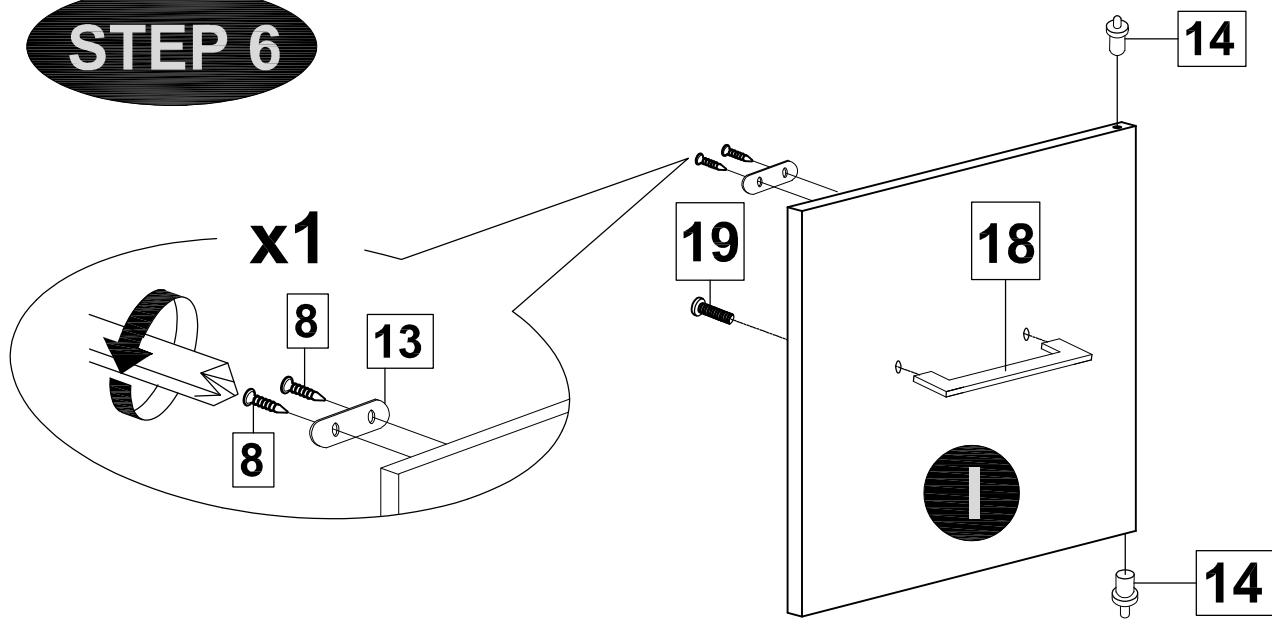
MODEL NAME:

BC 7590-00

STEP 5



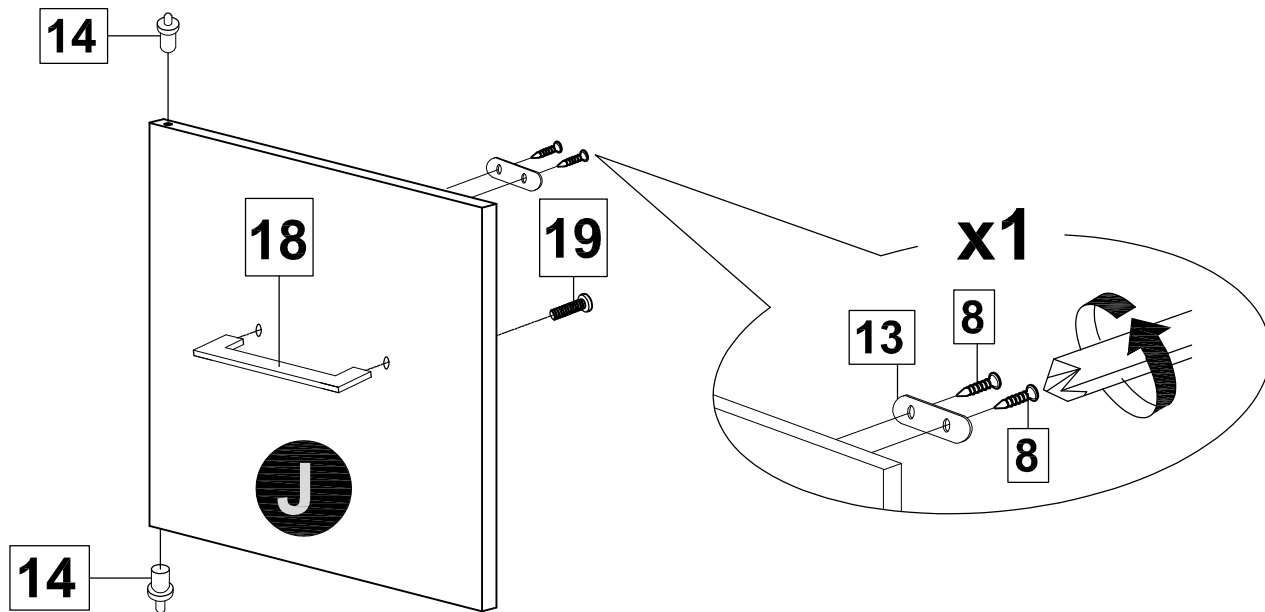
STEP 6



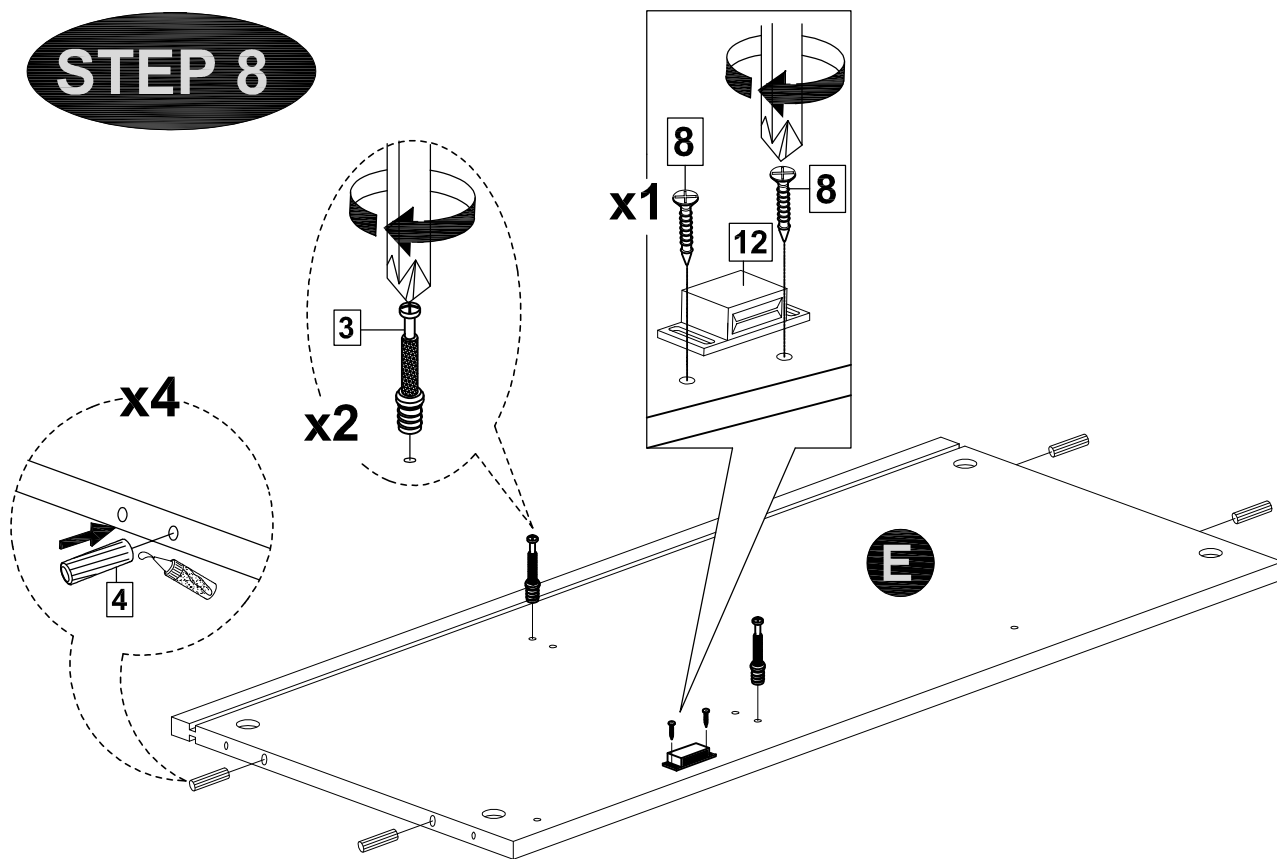
MODEL NAME:

BC 7590-00

STEP 7



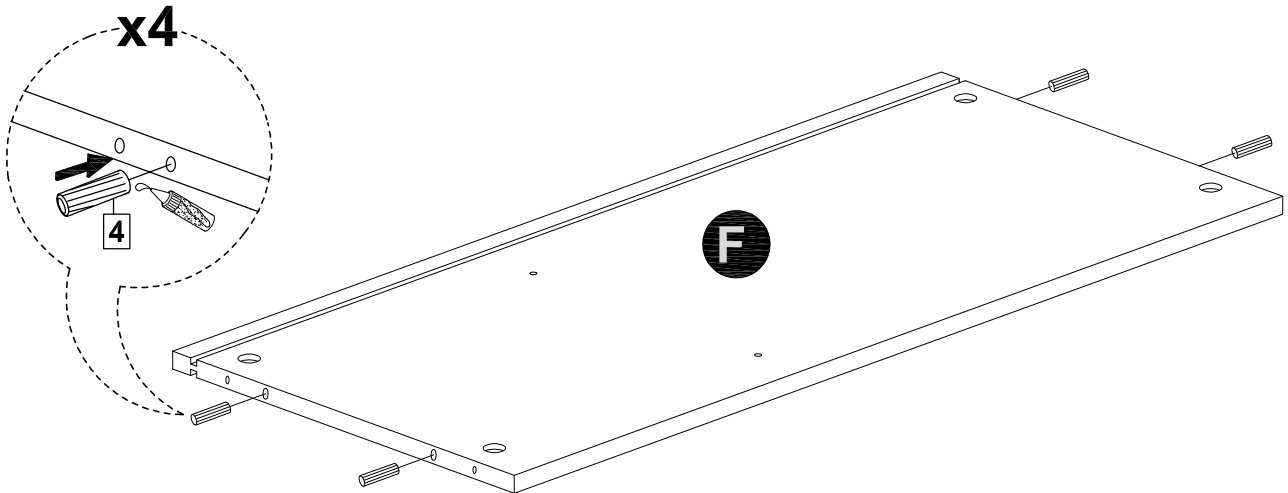
STEP 8



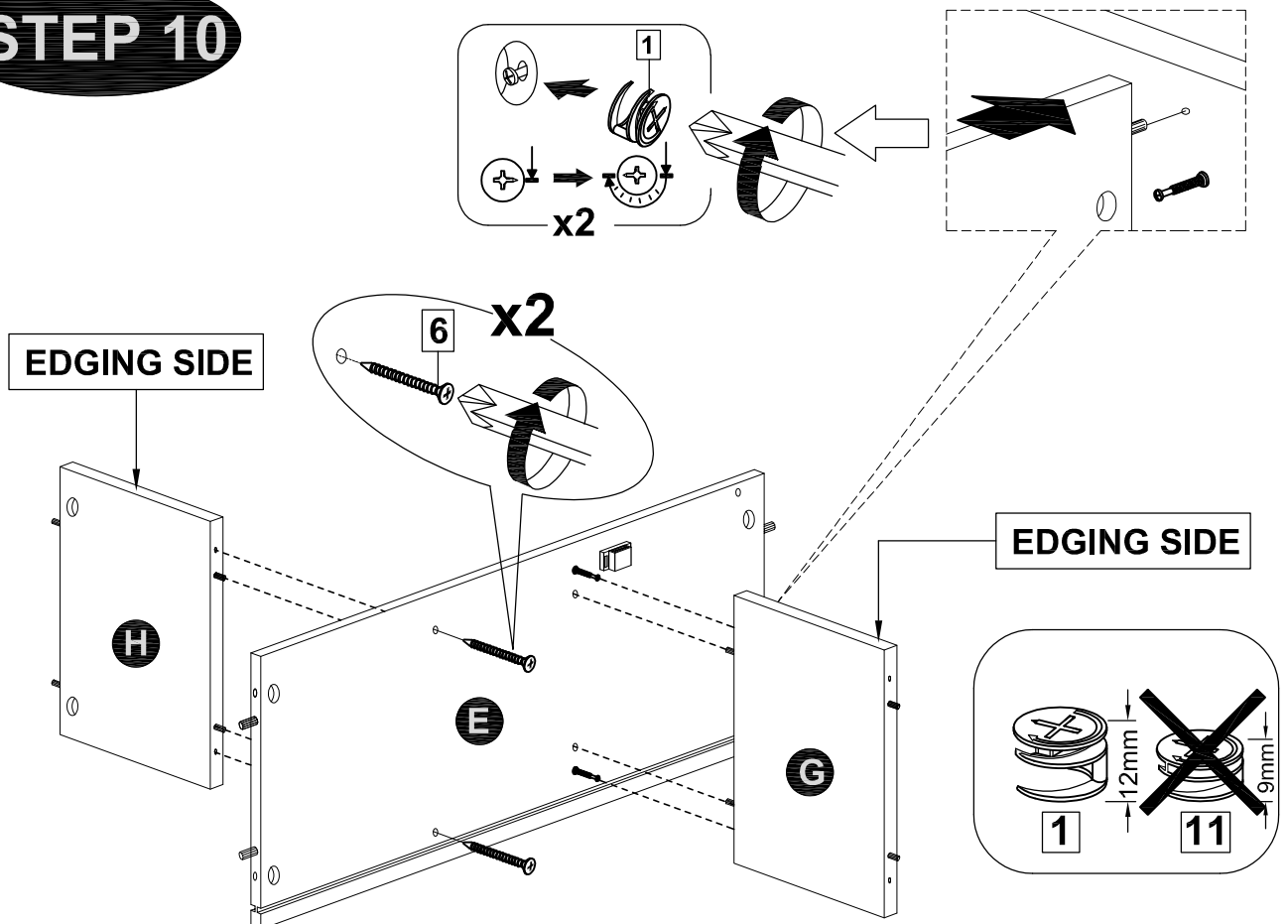
MODEL NAME:

BC 7590-00

STEP 9



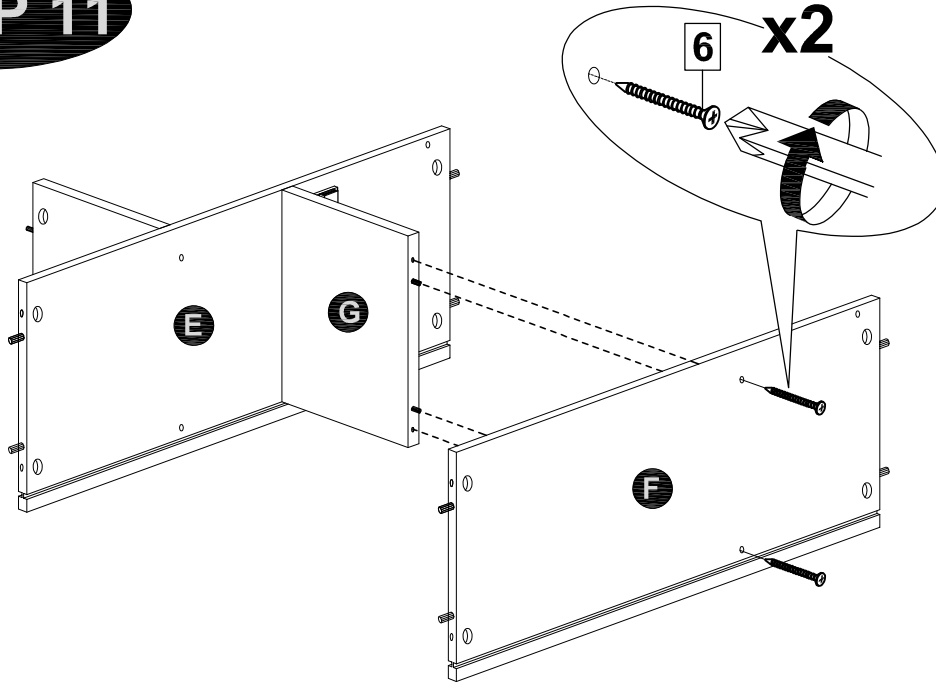
STEP 10



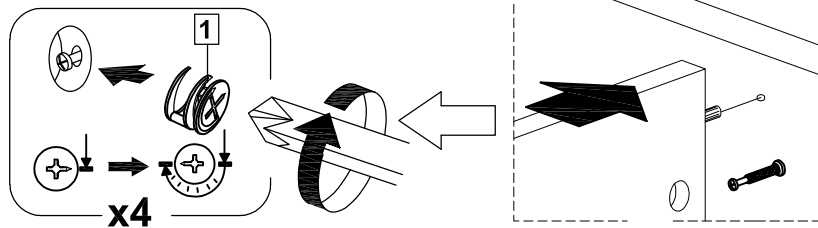
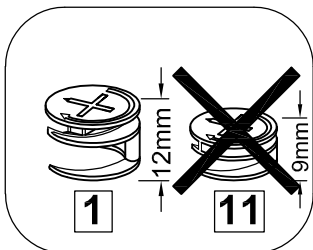
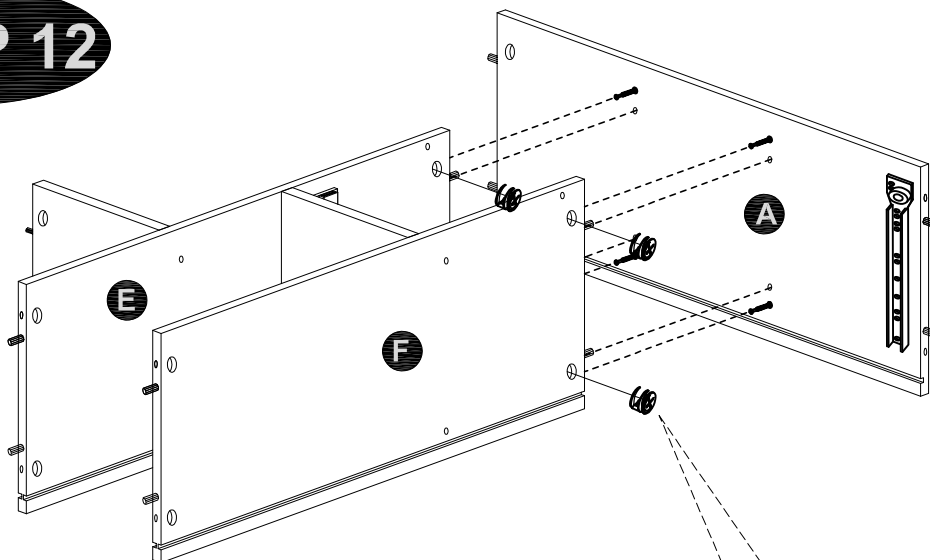
MODEL NAME:

BC 7590-00

STEP 11



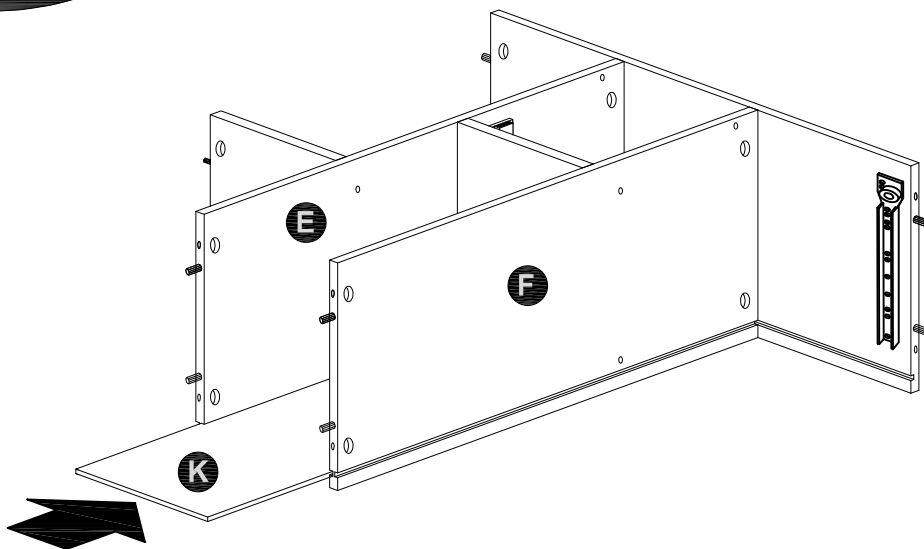
STEP 12



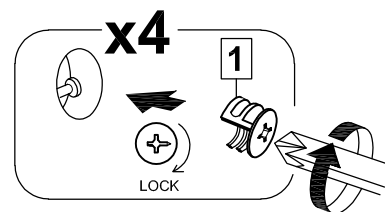
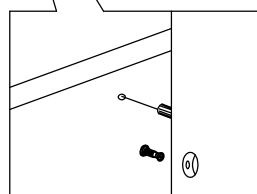
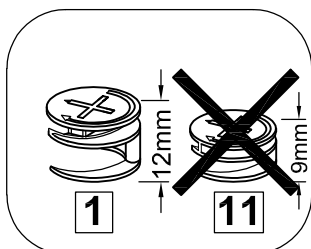
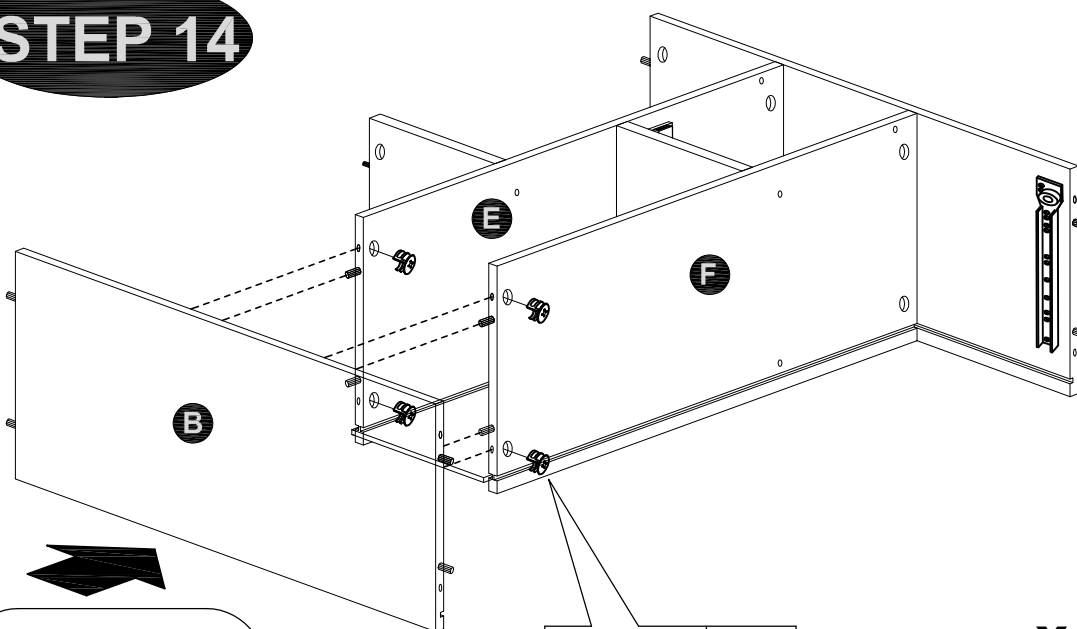
MODEL NAME:

BC 7590-00

STEP 13



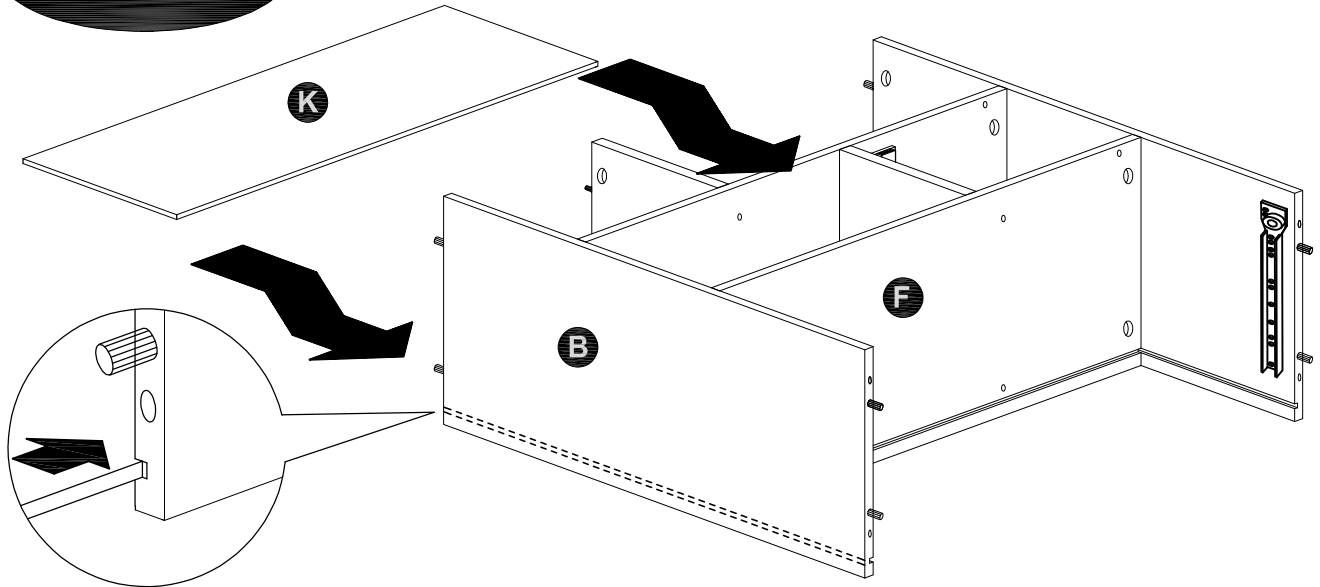
STEP 14



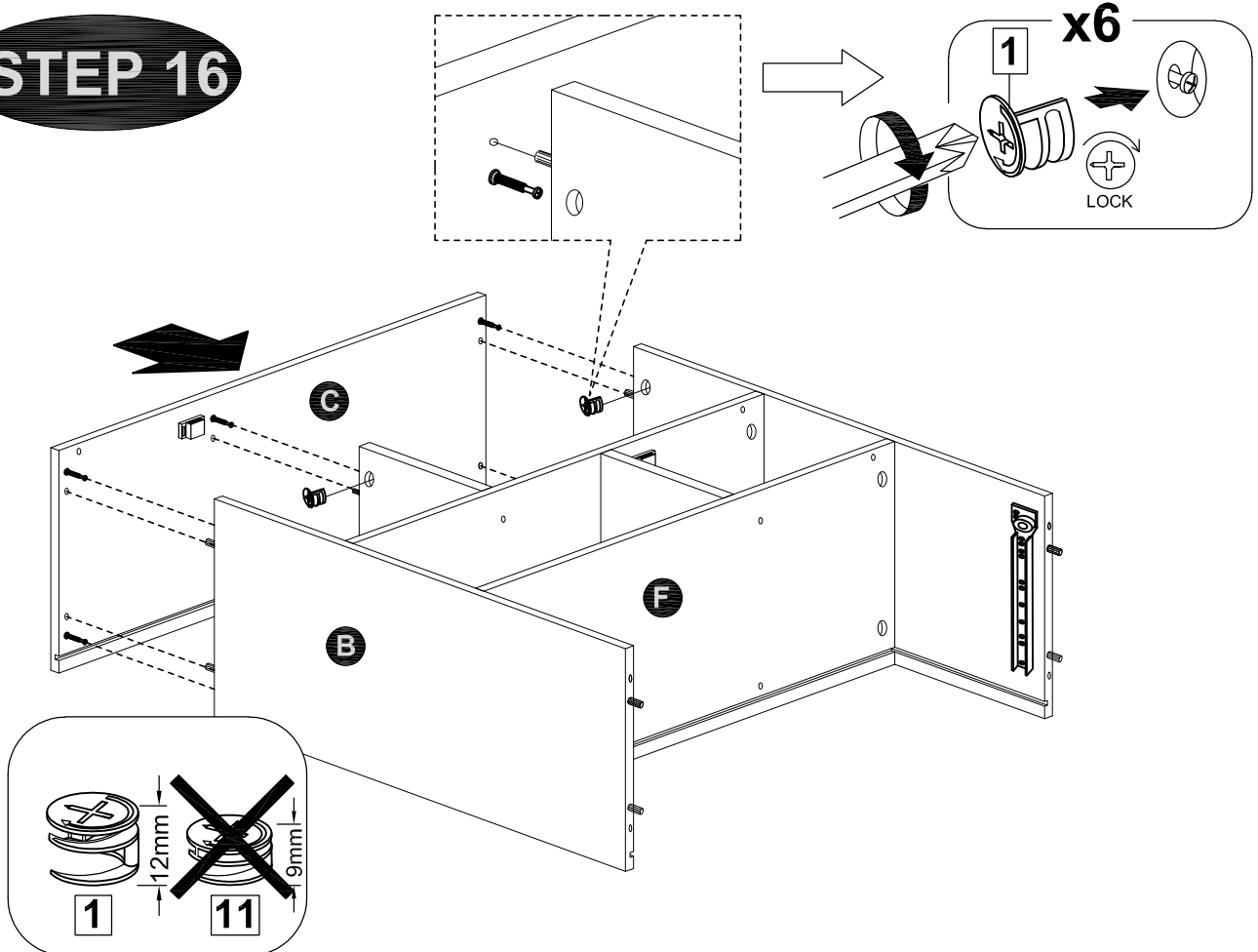
MODEL NAME:

BC 7590-00

STEP 15



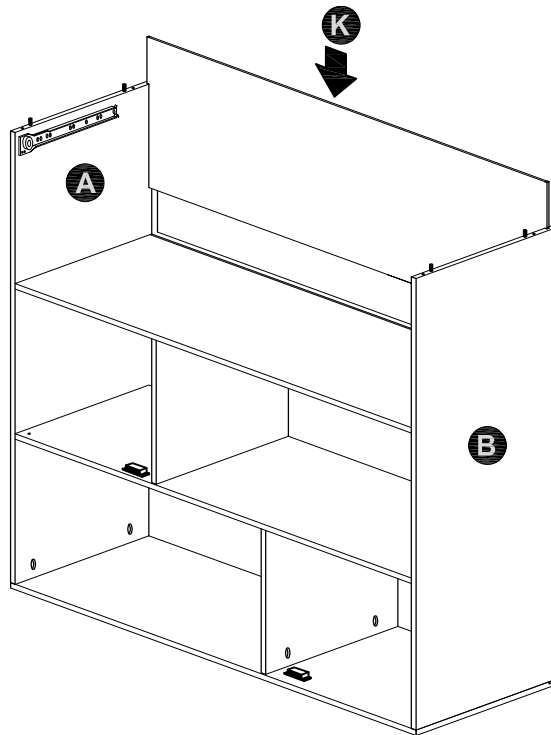
STEP 16



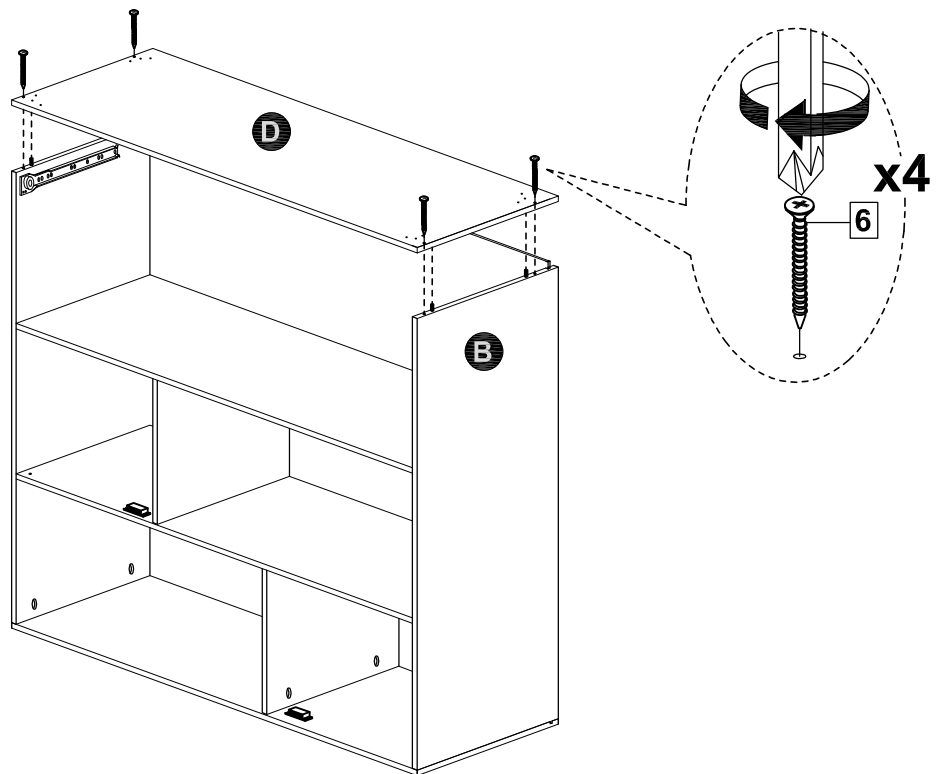
MODEL NAME:

BC 7590-00

STEP 17



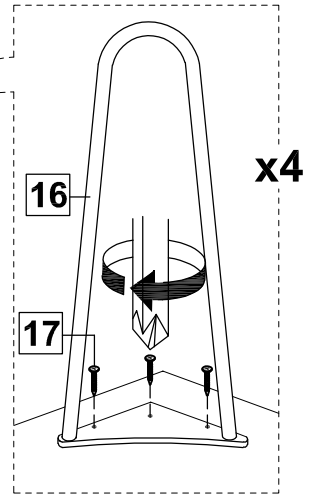
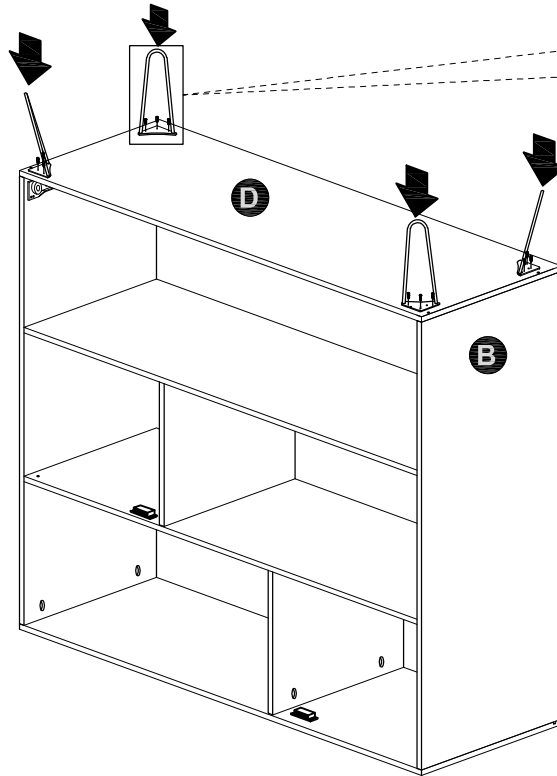
STEP 18



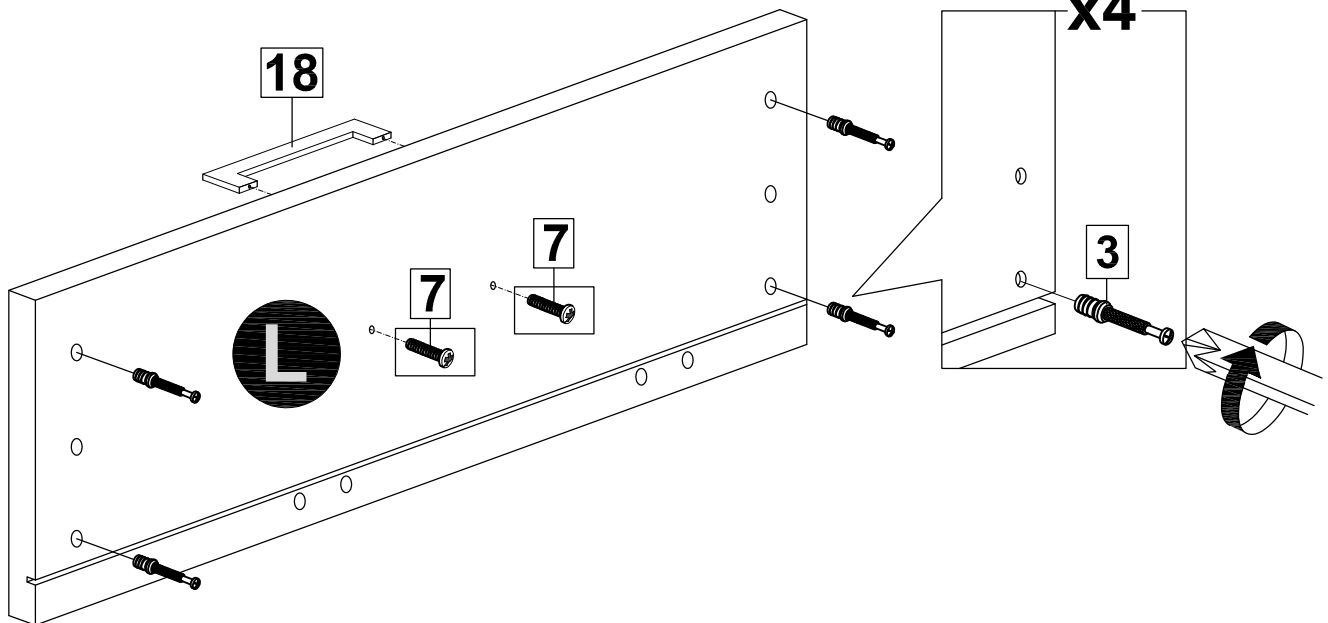
MODEL NAME:

BC 7590-00

STEP 19



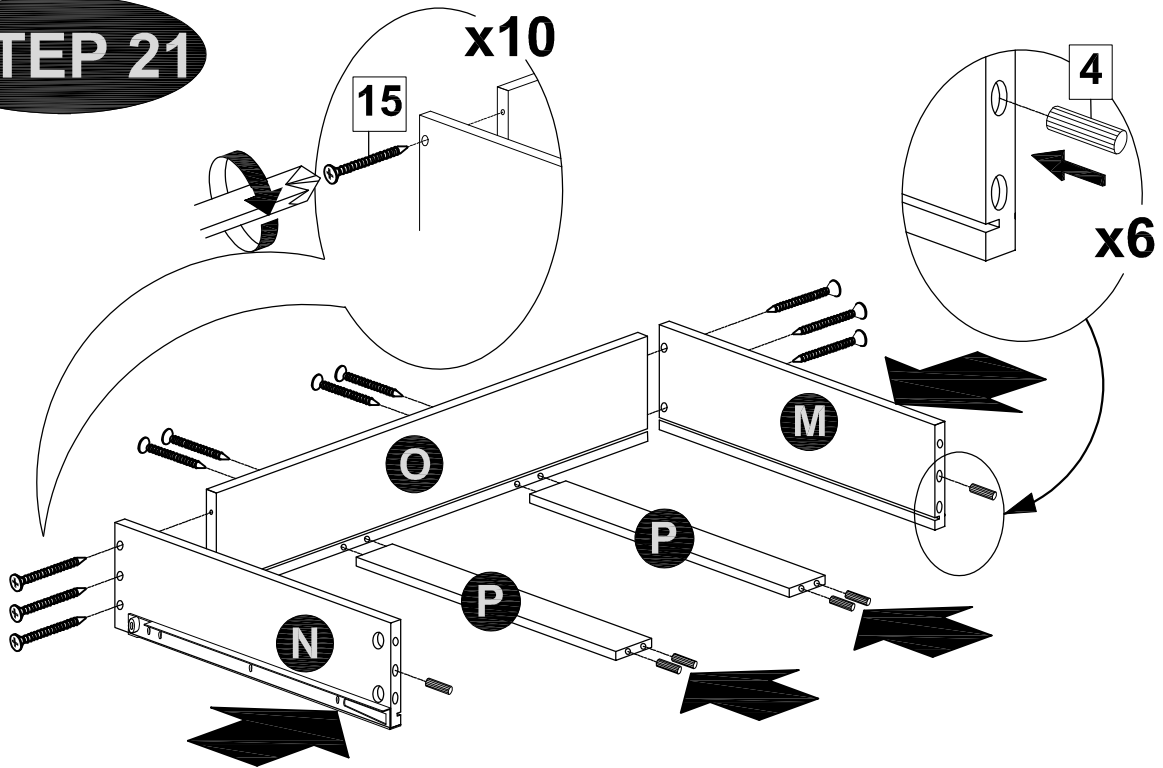
STEP 20



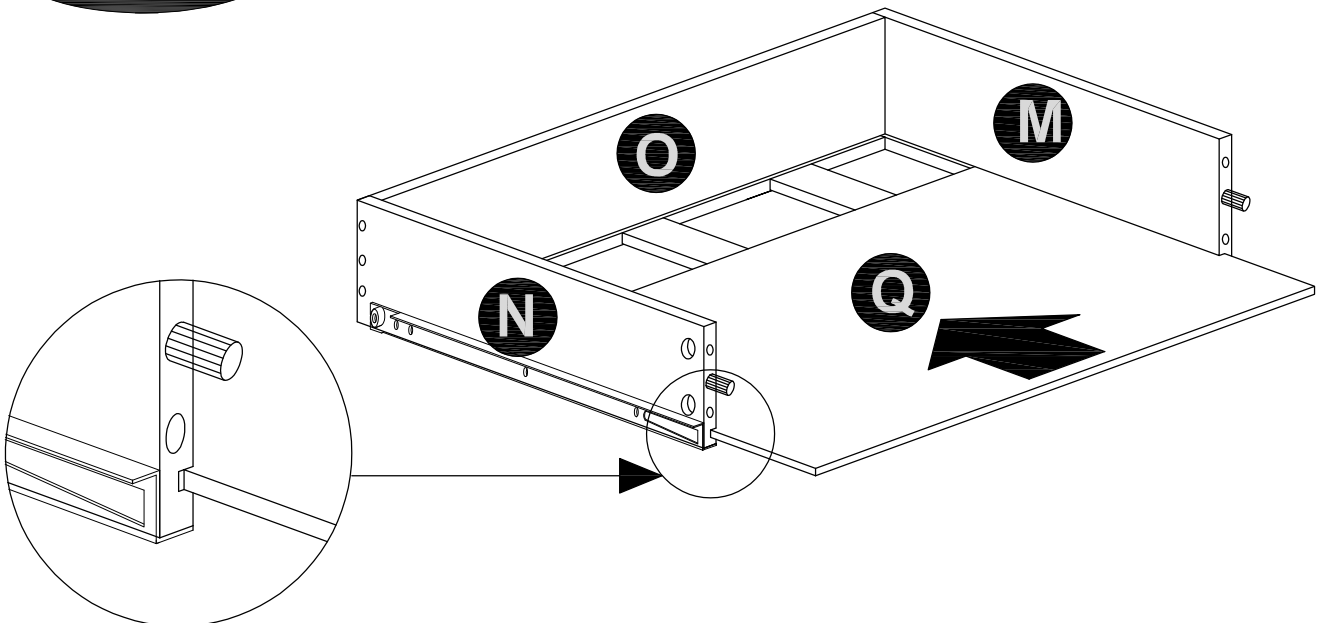
MODEL NAME:

BC 7590-00

STEP 21



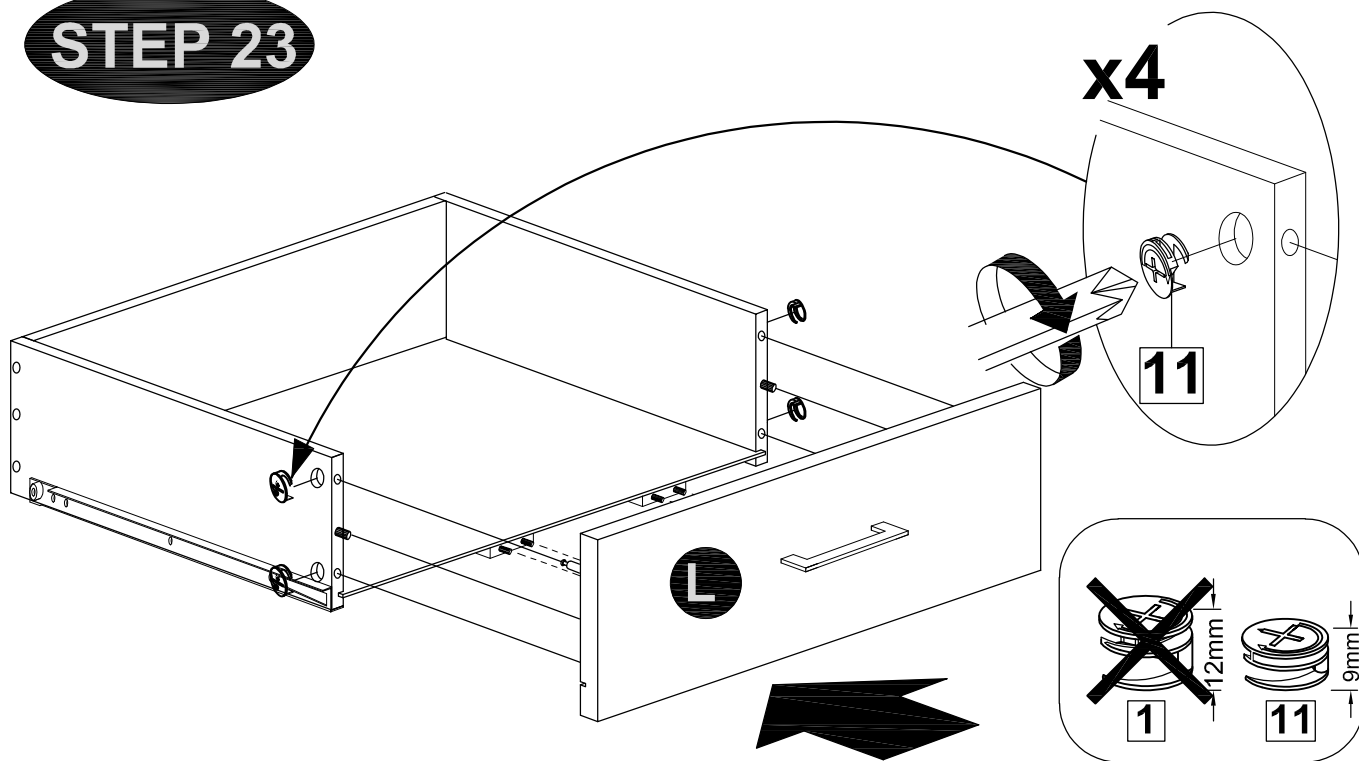
STEP 22



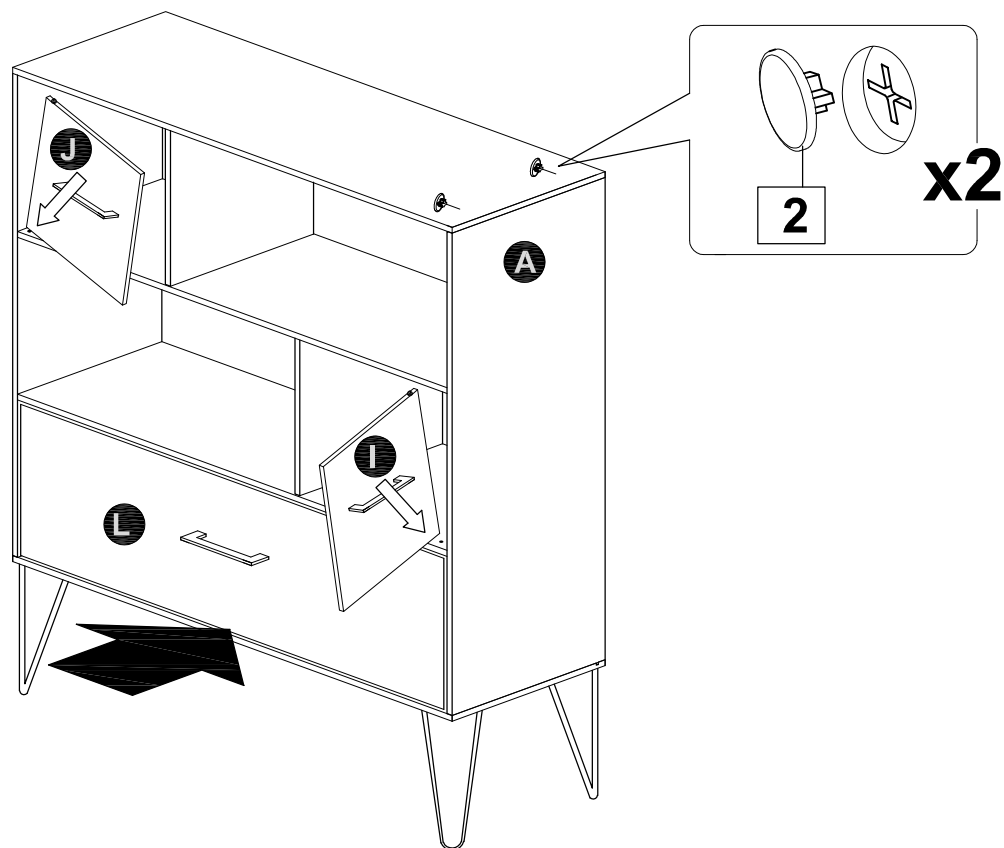
MODEL NAME:

BC 7590-00

STEP 23



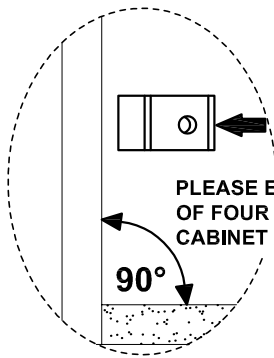
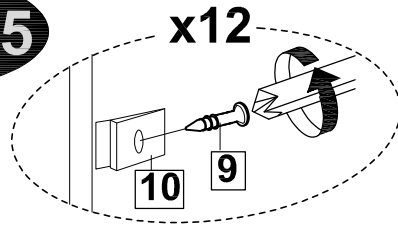
STEP 24



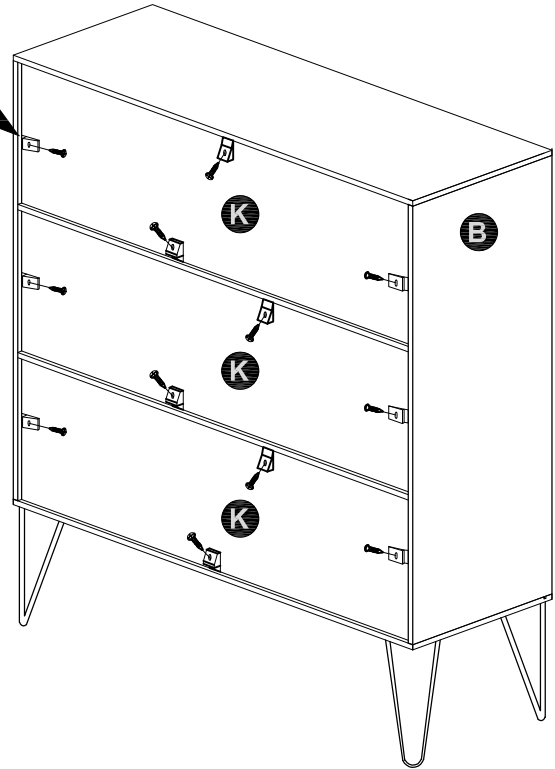
MODEL NAME:

BC 7590-00

STEP 25



PLEASE ENSURE THAT EACH OF FOUR CORNERS OF CABINET ARE SQUARE



STEP 26



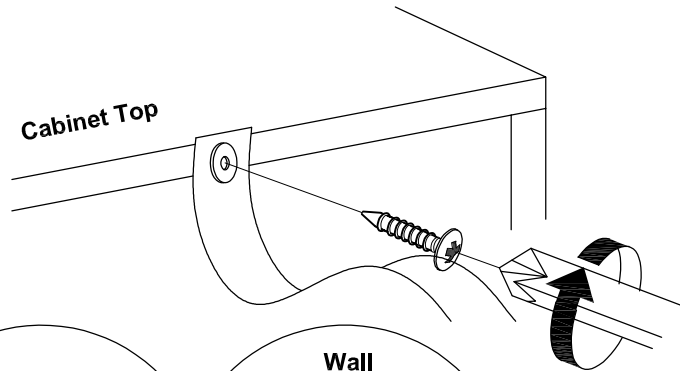
MODEL NAME :

It is recommended that you fit the anti-tip bracket to this item to avoid tipping and causing injury.

FITTING OF ANTI-TIP BRACKET

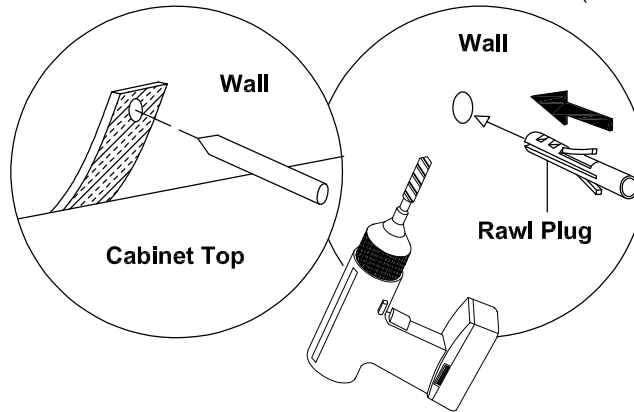
STEP 1 :

Insert screws through bracket into pre-drilled holes in cabinet.



STEP 2 :

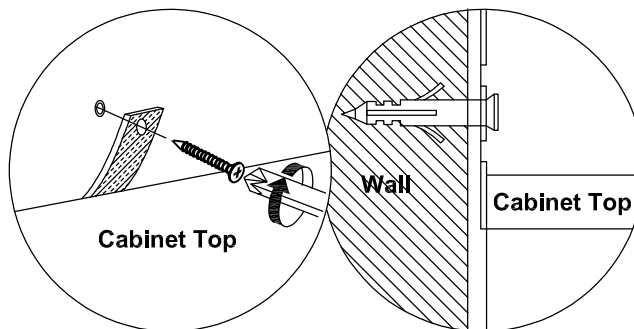
Make a mark on the wall through the bracket.



Drill a hole in the wall and insert the rawl plug.

STEP 3 :

Insert screw through bracket into hole in wall



NOTE : Wall fixings are not supplied with this product as different wall materials require different types of fixing devices (such as Rawl plugs on brick work). You must use fixing devices suitable for the type of wall you intend to mount this product to. Please ensure that the head of any screw used as a diameter greater than the diameter of the mounting hole on the bracket and that the fixing is safe and secure before use.
The screw supplied is to fix the anti-tip strap to the cabinet.

HARDWARE LIST



Anti-Tip Strap - 2pcs



M3.5 x 16MM - 2pcs