

QUEEN BED

ASSEMBLY INSTRUCTIONS

Read this instruction carefully. See hardware and furniture part list for guidance. Be sure all parts are complete, before you assemble. Place all wooden furniture parts on a clean and flat soft surface to prevent from being scratched. Follow the figure to start assembling.

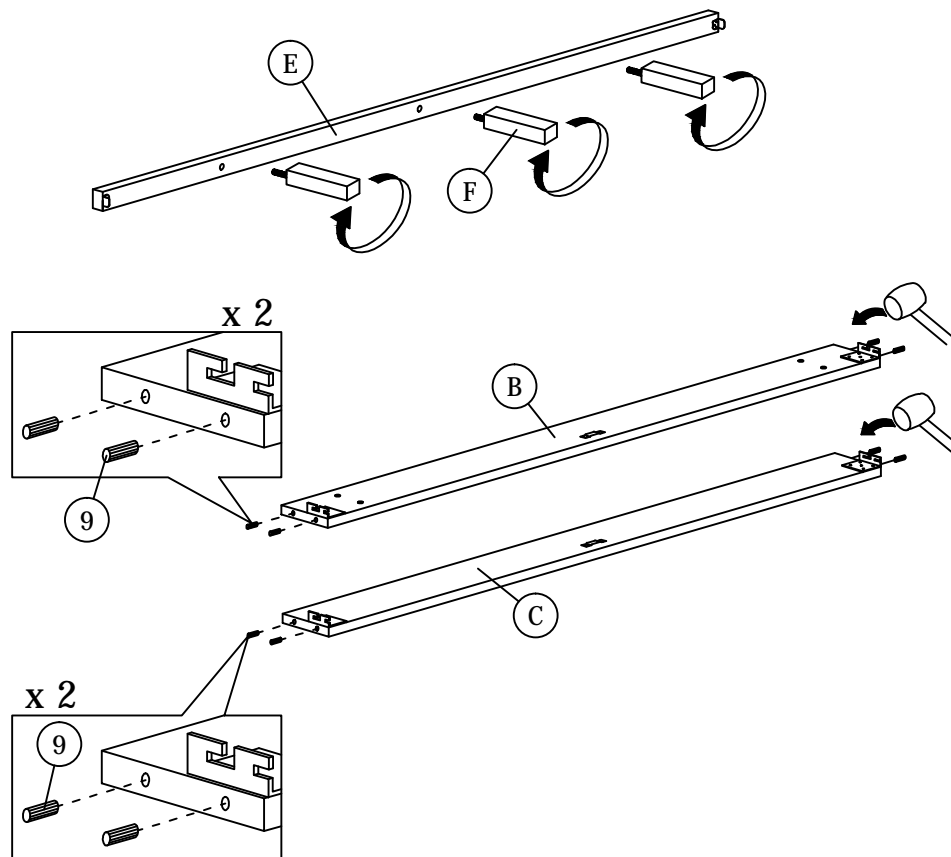
CAUTIONS : 1. Do not FULLY - TIGHTEN the nut or nut bolt until all nut or bolt is ready assembled.
2. Do not OVER - TIGHTEN the nut or bolt to avoid causing damages to the thread.
3. Keep all hardware parts out of reach of children.

NOTE : THE LIST AND QUANTITY SHOWN ARE FOR 1 UNIT ASSEMBLY.
Tool needed : Screwdriver & Rubber Mallet (not provider).

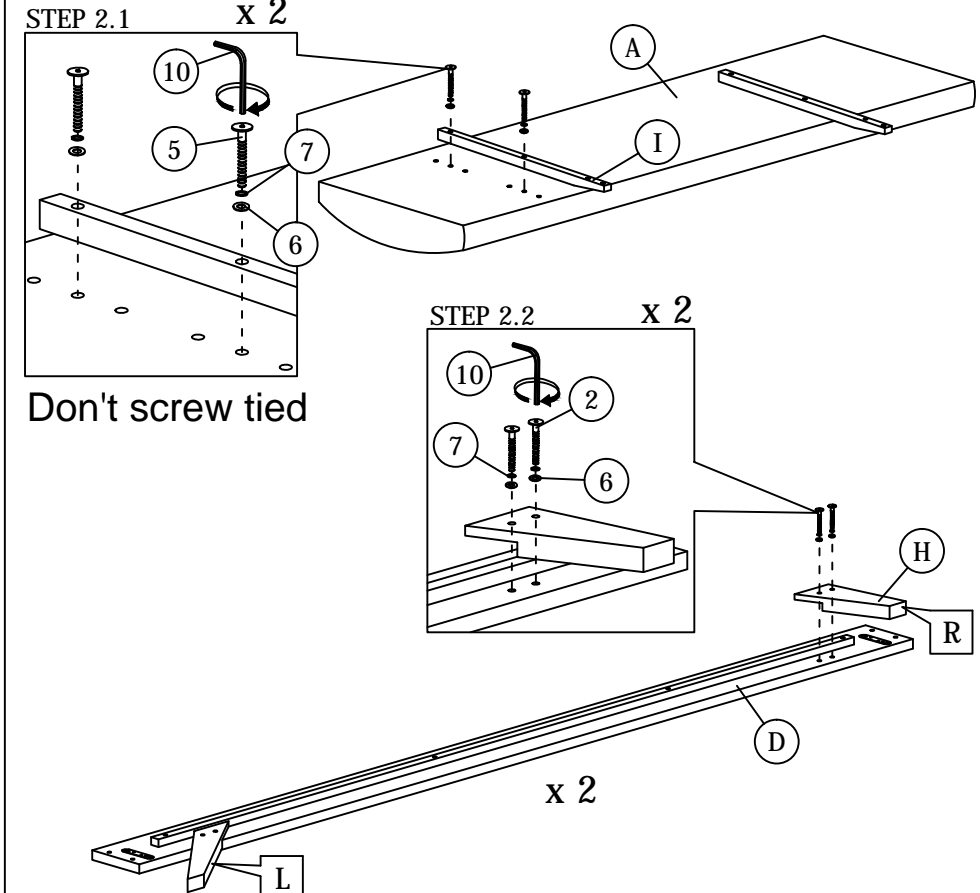
PART LIST		
ITEM	DESCRIPTION	QTY
A	HEADBOARD	1 PC
B	HEADBOARD PANEL	1 PC
C	FOOTBOARD	1 PC
D	SIDE RAIL	2 PCS
E	CENTER RAIL	1 PC
F	CENTER SUPPORT LEG	3 PCS
G	BED SLAT	1 SET
H	BED LEG	4 PCS
I	HEADBOARD SUPPORT WOOD	2 PCS

HARDWARE LIST		
ITEM	DESCRIPTION	QTY
1	JCBB BOLT M8 x 16mm	8 PCS
2	JCBB BOLT M8 x 35mm	8 PCS
3	JCBB BOLT M8 x 50mm	2 PCS
4	JCBB BOLT M8 x 60mm	2 PCS
5	JCBB BOLT M8 x 70mm	4 PCS
6	M8 FLAT WASHER	16 PCS
7	M8 SPRING WASHER	16 PCS
8	WOOD SCREW M4 x 32mm	9 PCS
9	WOOD DOWEL M10 x 30mm	8 PCS
10	M5 ALLEN KEY (BALL SHAPE)	1 PC

STEP 1



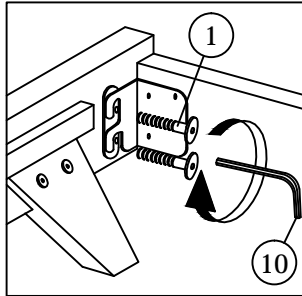
STEP 2



ASSEMBLY INSTRUCTIONS

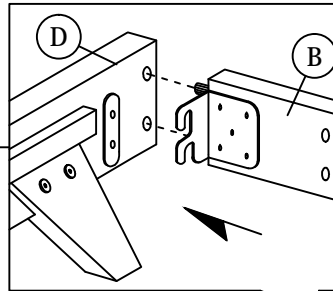
STEP 3

STEP 3.2

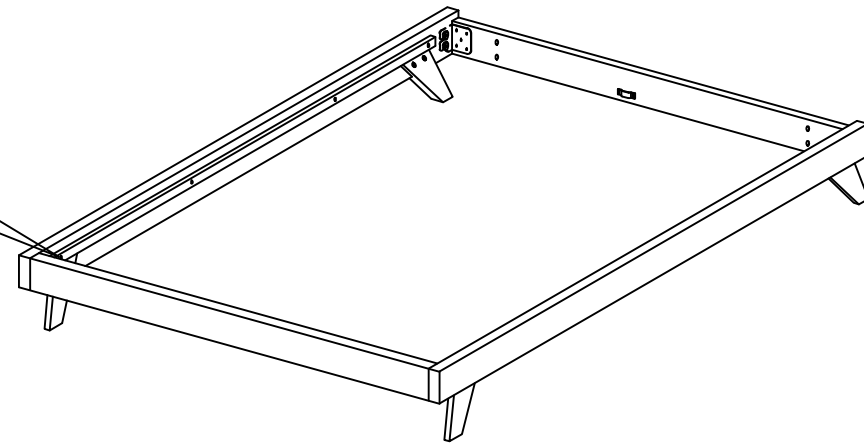


x 4

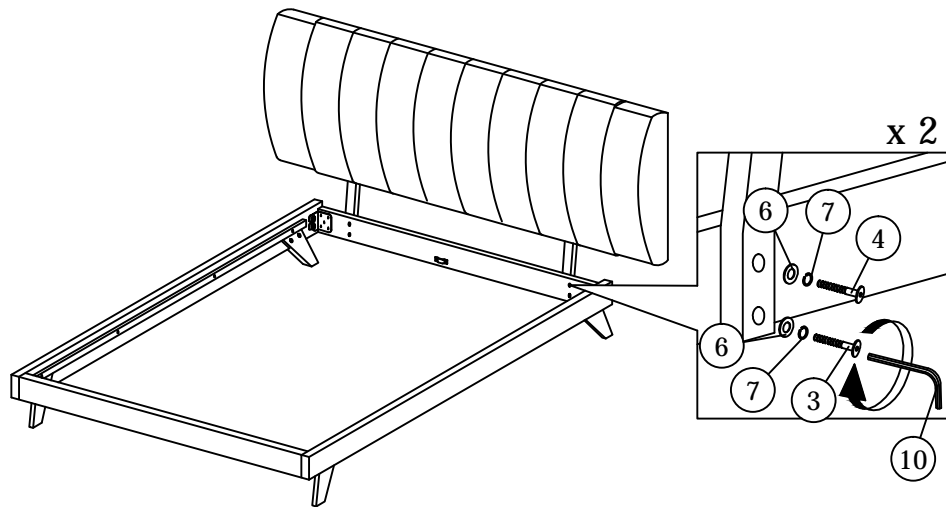
STEP 3.1



x 4



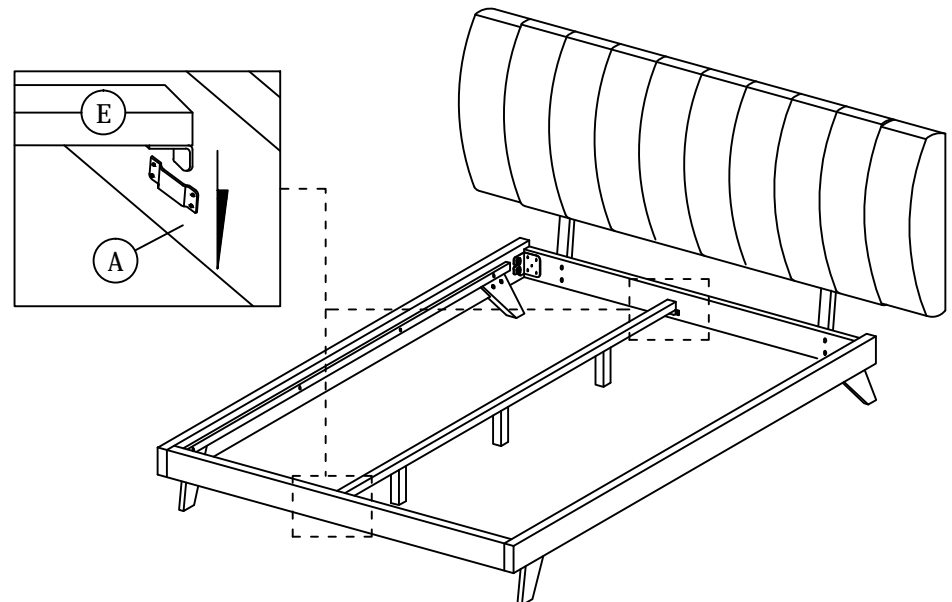
STEP 4



x 2

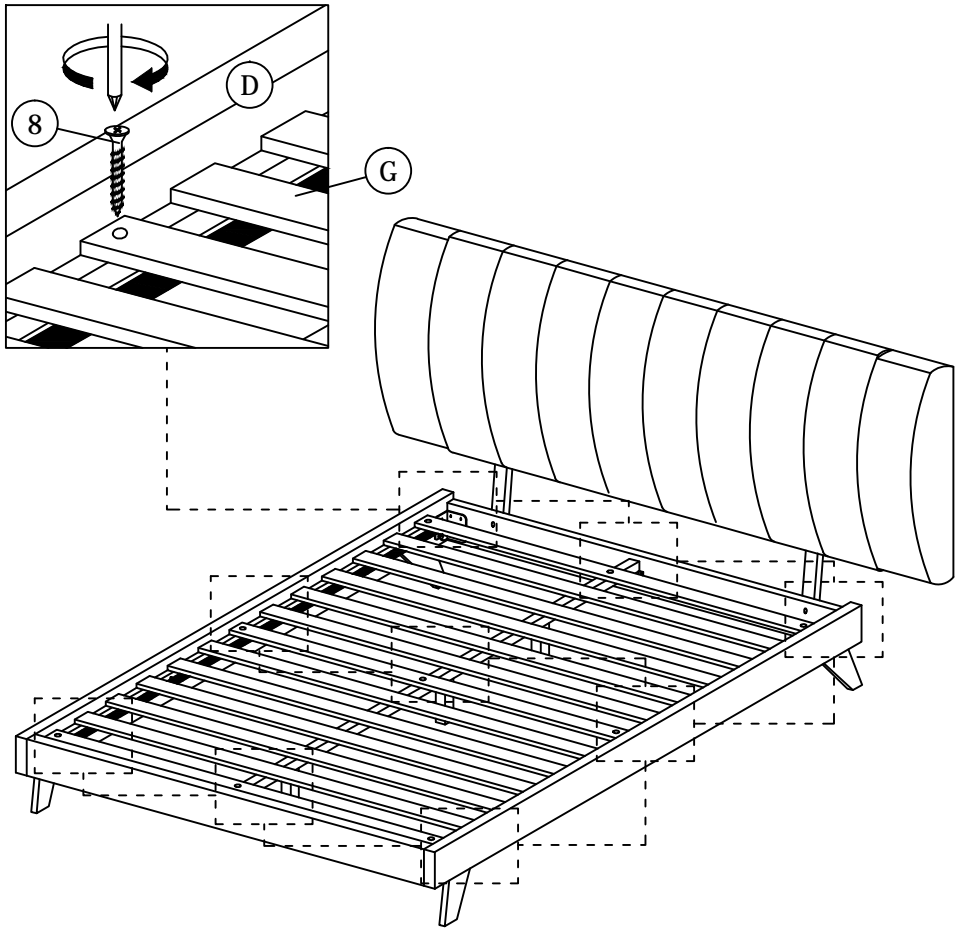
****Finish step 4,
Please screw tied the step 2 bolt.**

STEP 5

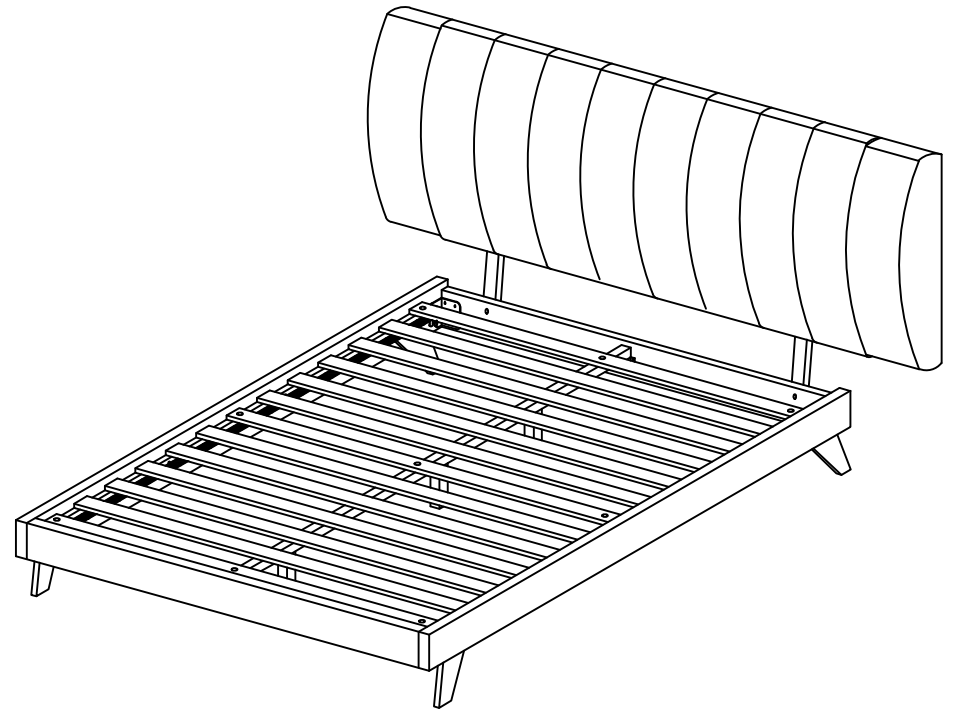


ASSEMBLY INSTRUCTIONS

STEP 6



STEP 7



* When moving the bed position, the center support legs must be adjust to be straight to avoid any broken problem.