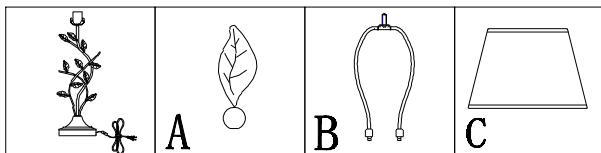
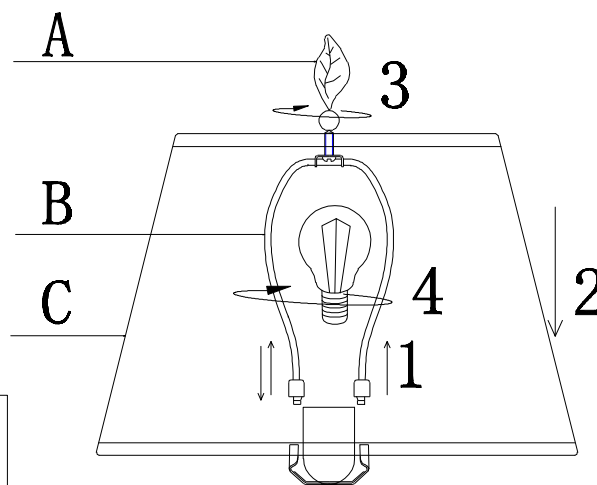
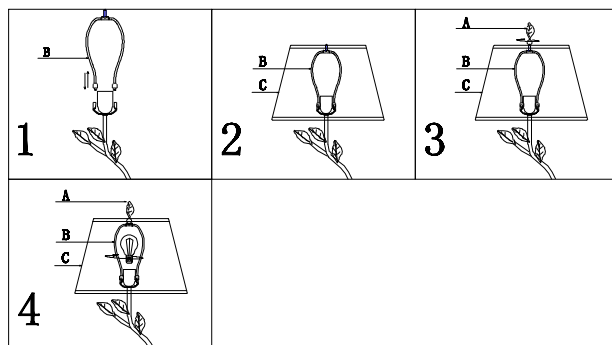


The parts and hardware below have been included for assembly:



Assembly Steps:



Assembly Instruction:

1. Install the harp (B) according to the mark on picture.
2. Install the shade (C) on the harp (B)
3. Fix the shade (C) by finial (A), and adjust to balance.
4. Install the bulb.

Specification:

Overall Dimension: 14.8*30.8"
Rated Voltage: 120V50Hz

WARNING:

The light fixture can only be used indoors, please cut off power before installing the light fixture

