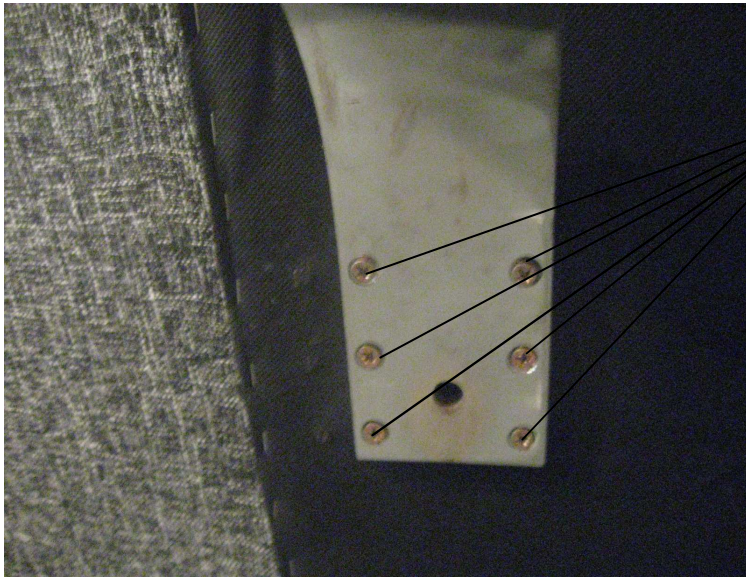


ASSEMBLE INSTRUCTION OF TD1909



USING ELECTRIC SREWDRIVER  
TO INSTALL LEGS



1

2

TWO HOLES AND STEEL TUBING MATCH



INSERTING



FINISHED POSTION

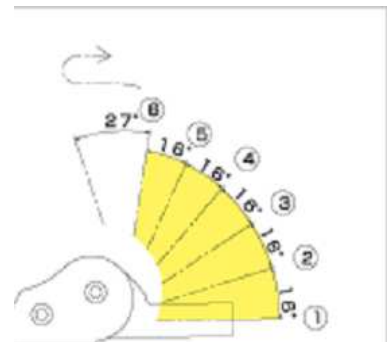


RELEASE POSITON

USING INSTRUCTION



1) THE SOFA HAVE THREE FCUTION KEY



2) 6 GEARS ADJUST HEIGHT



3) RELEASE POTIONS