

Read this instruction carefully. See hardware and furniture part list for guidance. Be sure all parts are complete, before you assemble. Place all wooden furniture parts on a clean and flat soft surface to prevent from being scratched. Follow the figure to start assembling.

CAUTIONS : 1. Do not FULLY - TIGHTEN the nut or nut bolt until all nut or bolt is ready assembled.
2. Do not OVER - TIGHTEN the nut or bolt to avoid causing damages to the thread.
3. Keep all hardware parts out of reach of children.

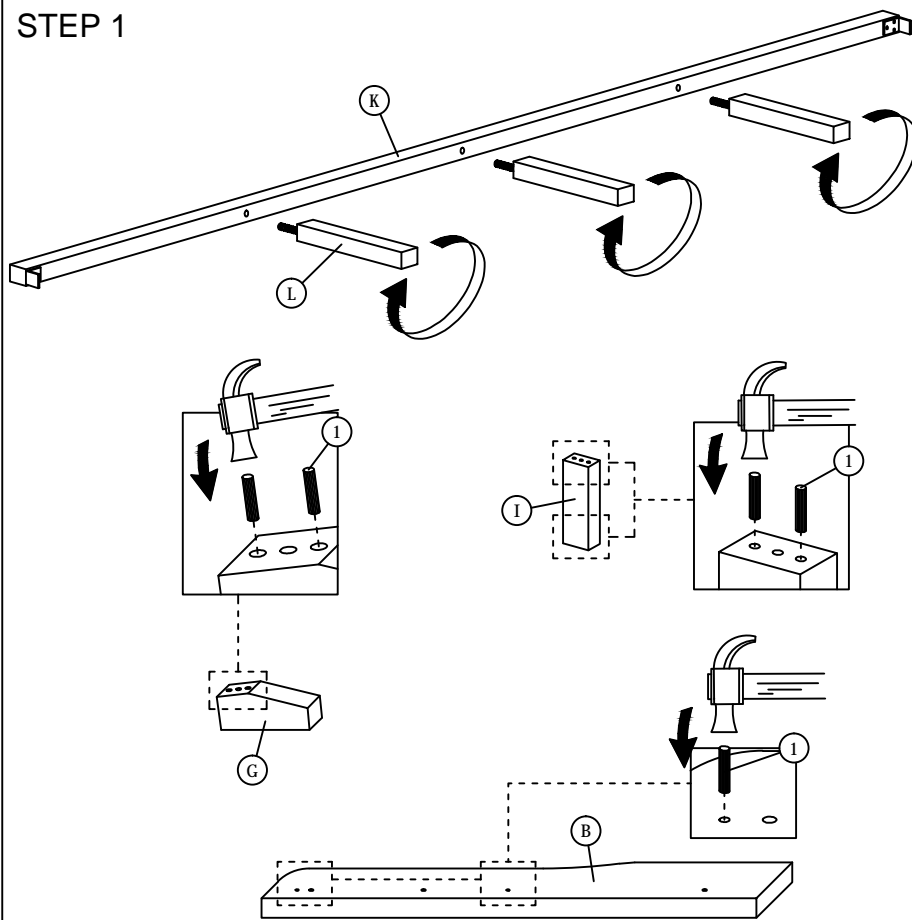
NOTE : THE LIST AND QUANTITY SHOWN ARE FOR 1 UNIT ASSEMBLY.

Tool needed : Screwdriver & Hammer (not provider).

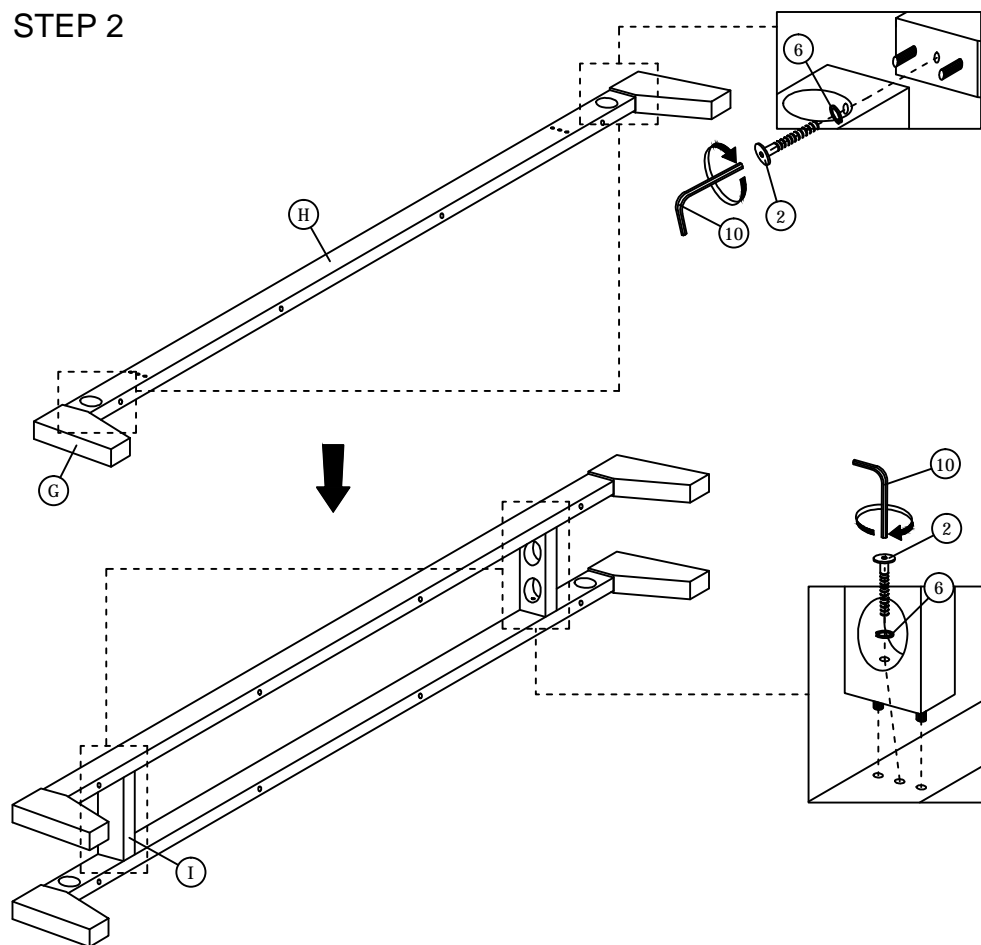
| PART LIST | | |
|-----------|------------------------|--------|
| ITEM | DESCRIPTION | QTY |
| A | HEADBOARD | 1 PC |
| B | HEADBOARD WING (L&R) | 2 PCS |
| C | HEADBOARD LEG (L&R) | 2 PCS |
| D | HEADBOARD SUPPORT WOOD | 2 PCS |
| E | HEADBOARD SUPPORT RAIL | 1 PC |
| F | FOOTBOARD | 1 PC |
| G | LEG | 4 PCS |
| H | APRON | 2 PCS |
| I | SIDE APRON | 2 PCS |
| J | SIDE RAIL | 2 PCS |
| K | CENTER RAIL | 1 PC |
| L | CENTER SUPPORT LEG | 3 PCS |
| M | CENTER SUPPORT | 2 PCS |
| N | BED SLAT | 26 PCS |

| HARDWARE LIST | | |
|---------------|---------------------------|--------|
| ITEM | DESCRIPTION | QTY |
| 1 | WOOD DOWEL M8 x 30mm | 20 PCS |
| 2 | JCBC BOLT M6 x 40mm | 14 PCS |
| 3 | JCBC BOLT M6 x 70mm | 4 PCS |
| 4 | JCBB BOLT M8 x 30mm | 8 PCS |
| 5 | JCBB BOLT M8 x 50mm | 10 PCS |
| 6 | M6 SPRING WASHER | 8 PCS |
| 7 | M6 FLAT WASHER | 6 PCS |
| 8 | M8 SPRING WASHER | 10 PCS |
| 9 | M8 FLAT WASHER | 10 PCS |
| 10 | M4 ALLEN KEY (BALL SHAPE) | 1 PC |
| 11 | M5 ALLEN KEY (BALL SHAPE) | 1 PC |
| 12 | WOOD SCREW M3.5 x 16mm | 8 PCS |
| 13 | WOOD SCREW M4 x 38mm | 4 PCS |
| 14 | BED SLAT CENTER FITTER | 13 PCS |
| 15 | BED SLAT SIDE FITTER | 26 PCS |

STEP 1

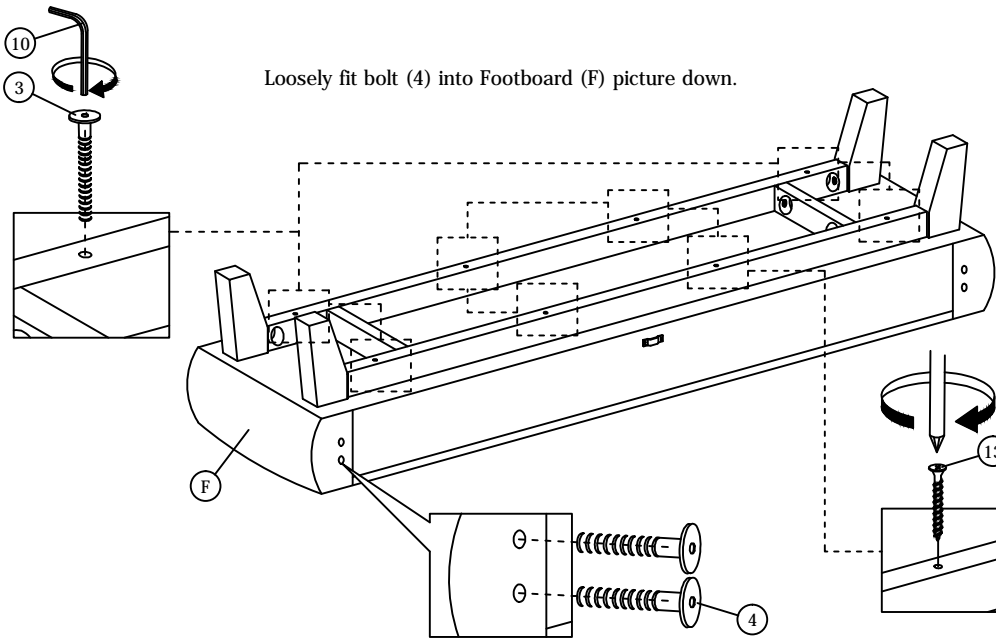


STEP 2

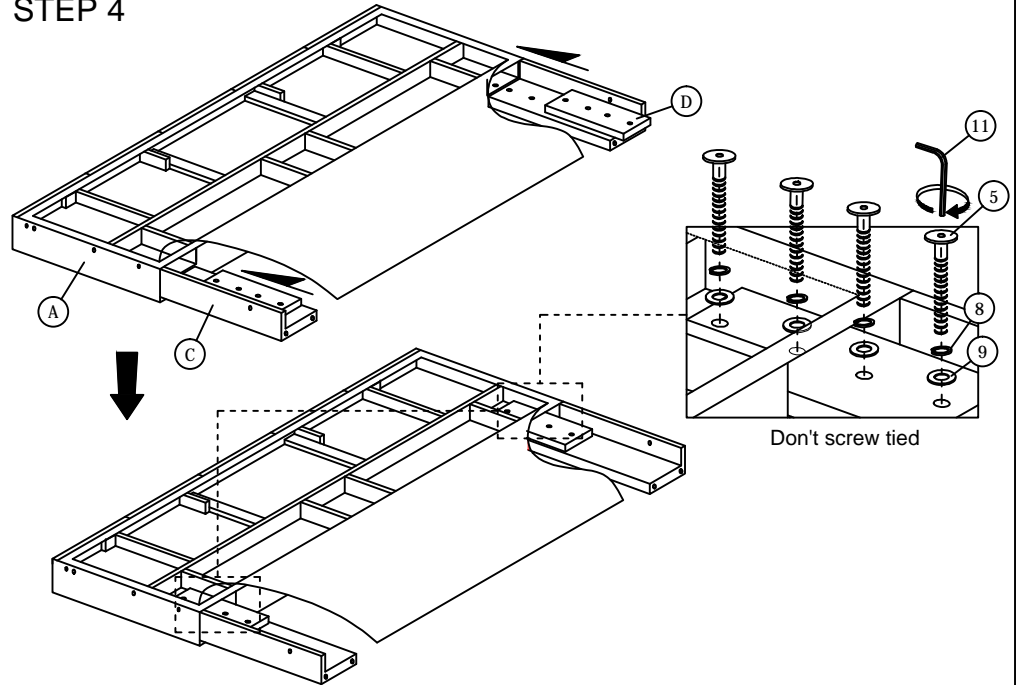


ASSEMBLY INSTRUCTIONS

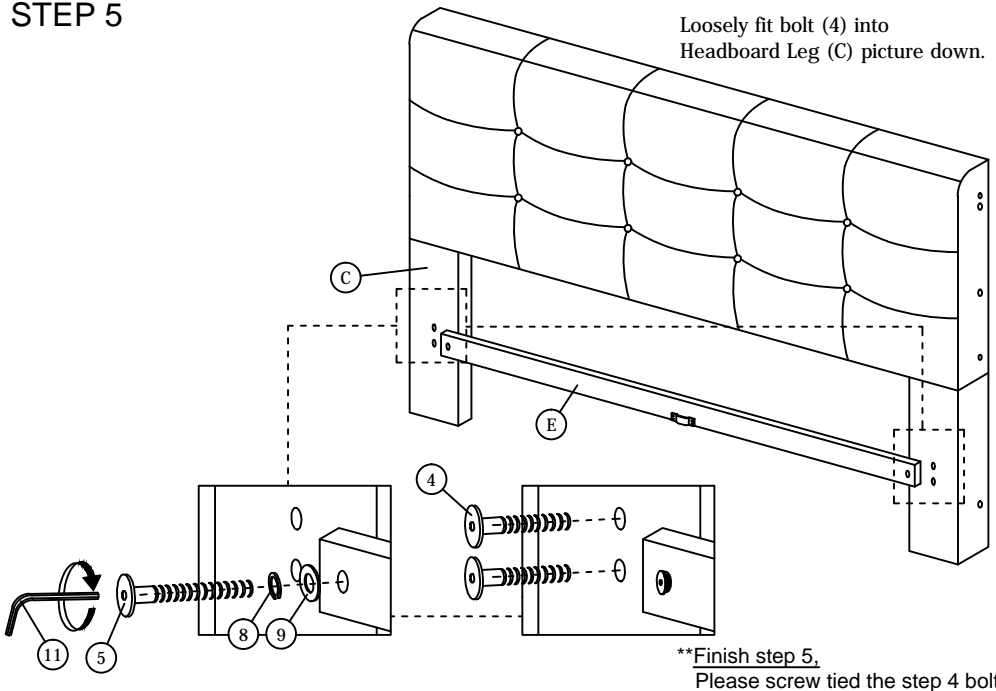
STEP 3



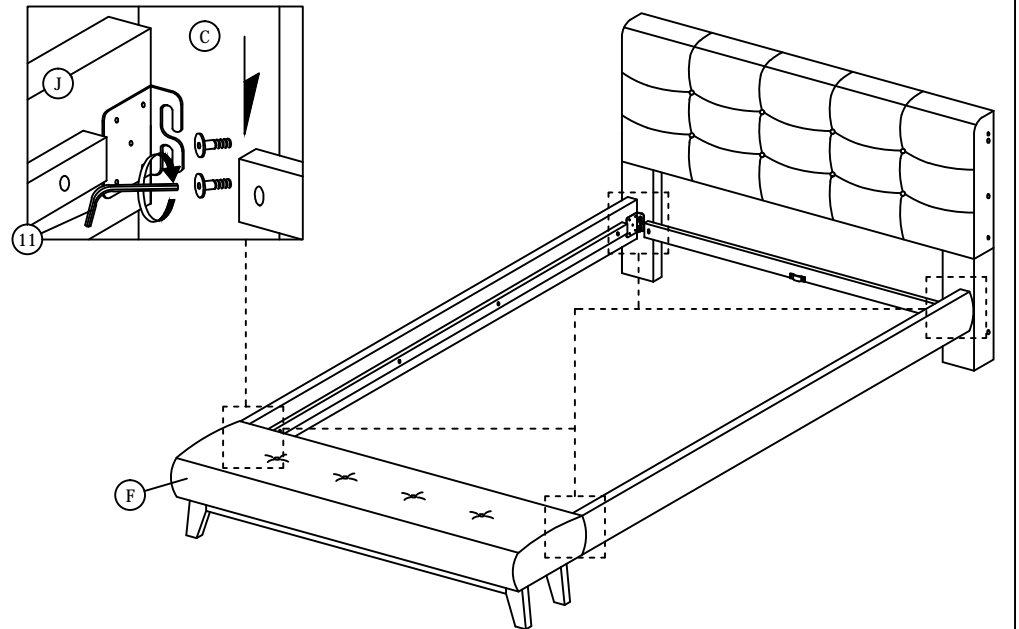
STEP 4



STEP 5

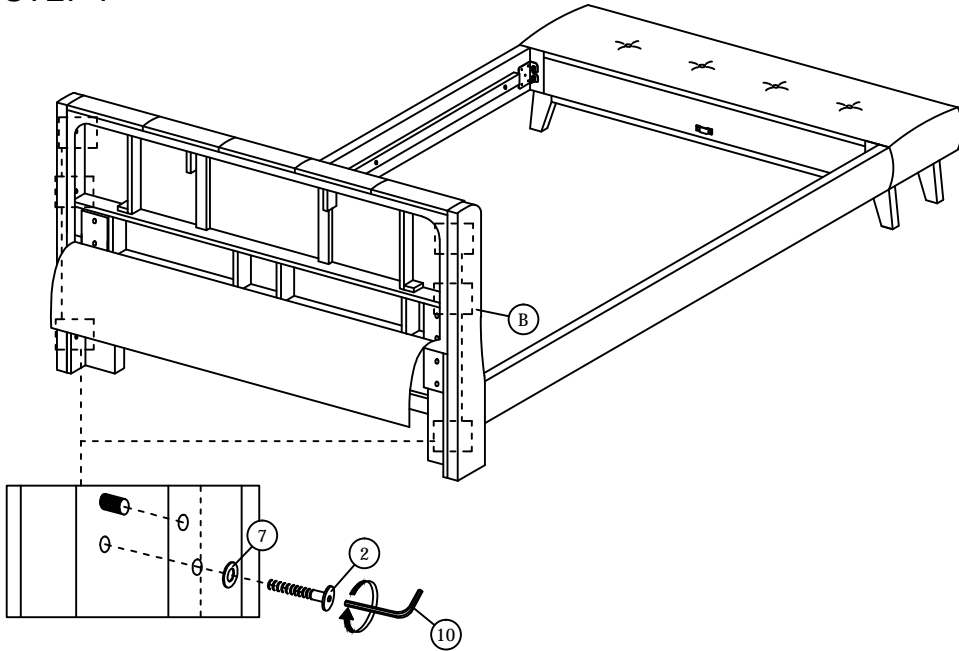


STEP 6

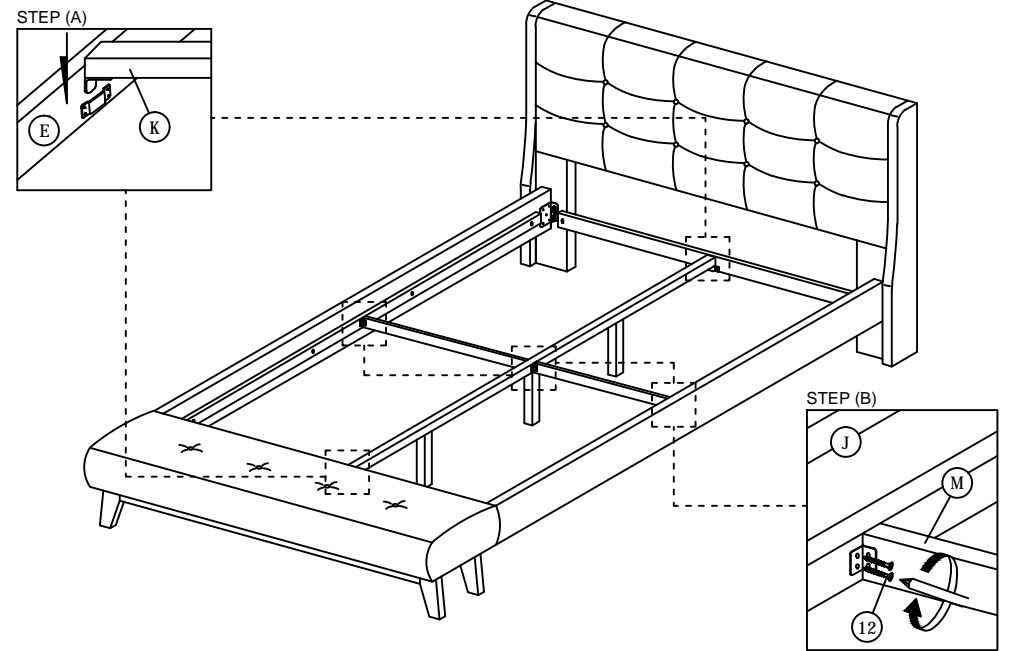


ASSEMBLY INSTRUCTIONS

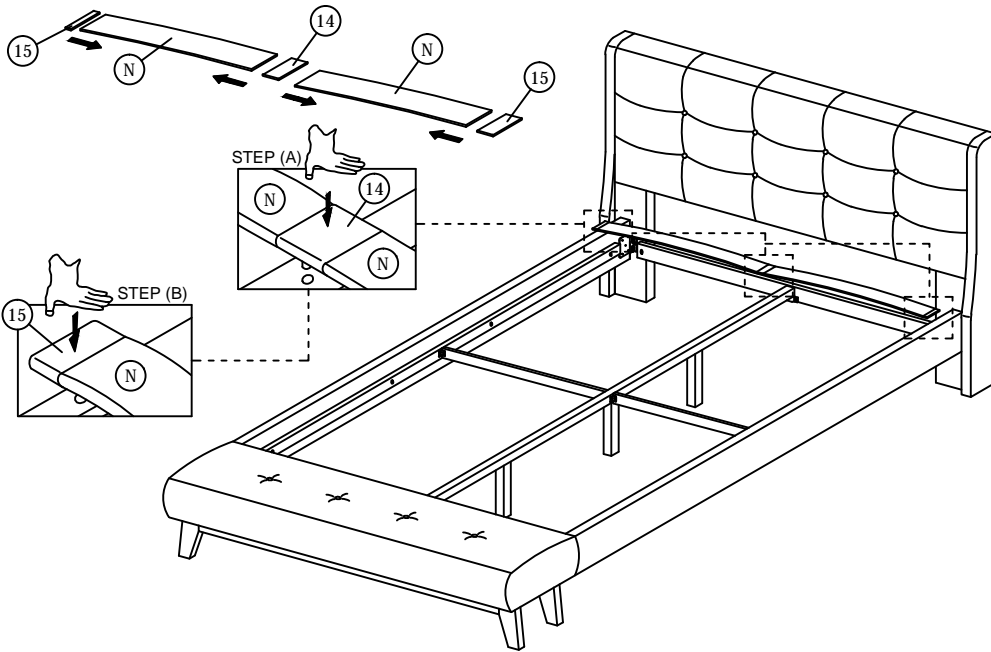
STEP 7



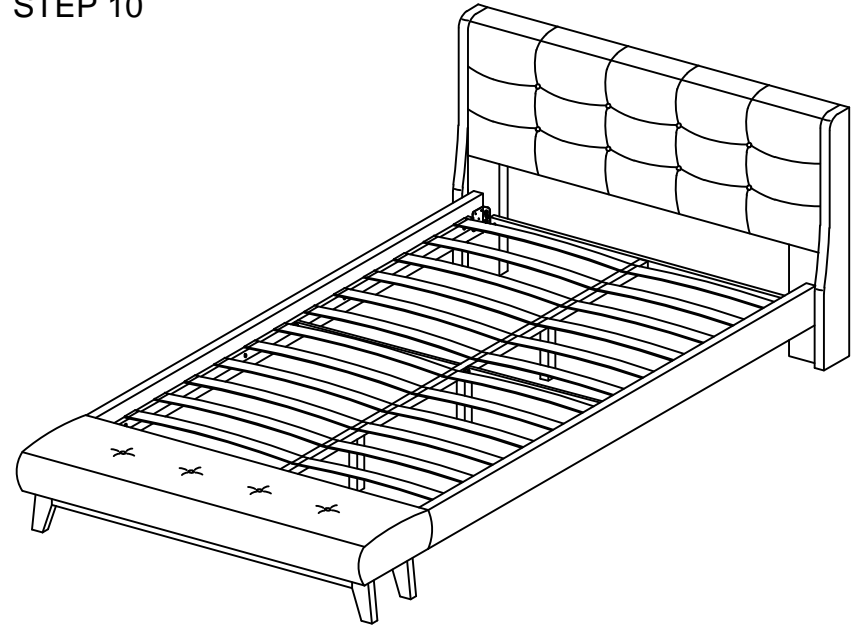
STEP 8



STEP 9



STEP 10



* When moving the bed position, the center support legs must be adjust to be straight to avoid any broken problem.