

Read this instruction carefully. See hardware and furniture part list for guidance. Be sure all parts are complete, before you assemble. Place all wooden furniture parts on a clean and flat soft surface to prevent from being scratched. Follow the figure to start assembling.

CAUTIONS : 1. Do not FULLY - TIGHTEN the nut or nut bolt until all nut or bolt is ready assembled.
 2. Do not OVER - TIGHTEN the nut or bolt to avoid causing damages to the thread.
 3. Keep all hardware parts out of reach of children.

PART LIST		
ITEM	DESCRIPTION	QTY
A	CHAIR	1 PC
B	CHAIR SEAT FRAME	1 PC
C	FRONT LEG	2 PCS
D	BACK LEG	2 PCS

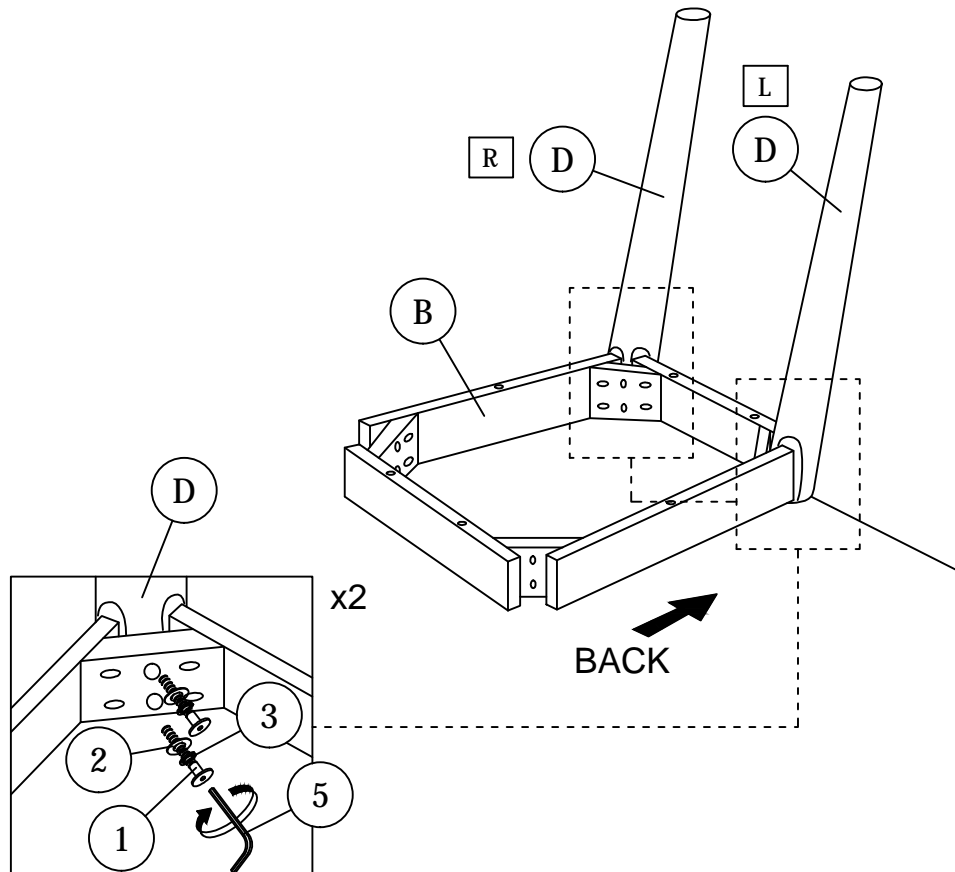
HARDWARE LIST		
ITEM	DESCRIPTION	QTY
1	JCBC Bolt M6 x 60mm 	8pcs
2	M6 FLAT WASHER 	8pcs
3	M6 SPRING WASHER 	8pcs
4	WOOD SCREW M4 x 38mm 	6pcs
5	M4 ALLEN KEY (BALL SHAPE) 	1pc

NOTE : THE LIST AND QUANTITY SHOWN ARE FOR 1 UNIT ASSEMBLY.

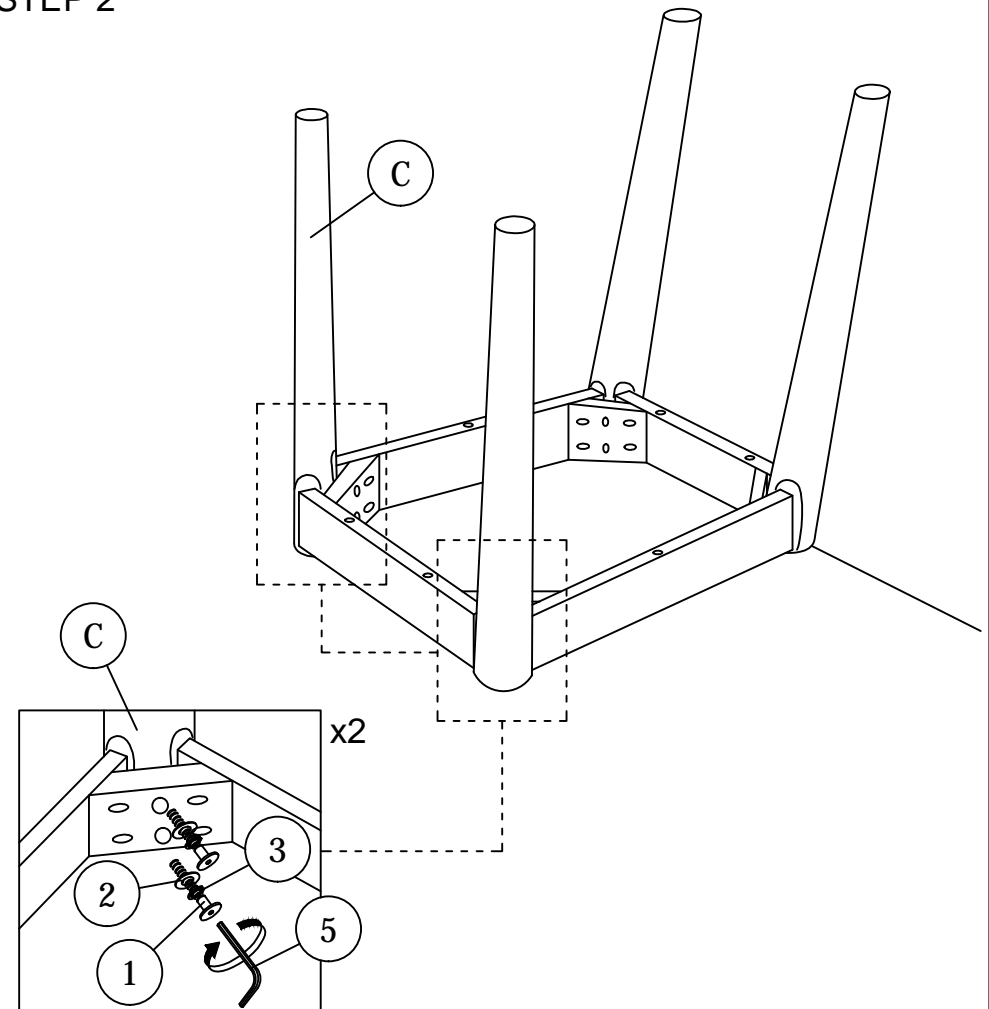
Tool needed : Screwdriver (not provider).

STEP 1

Follow the label direction to fix the Back Leg as picture shown.



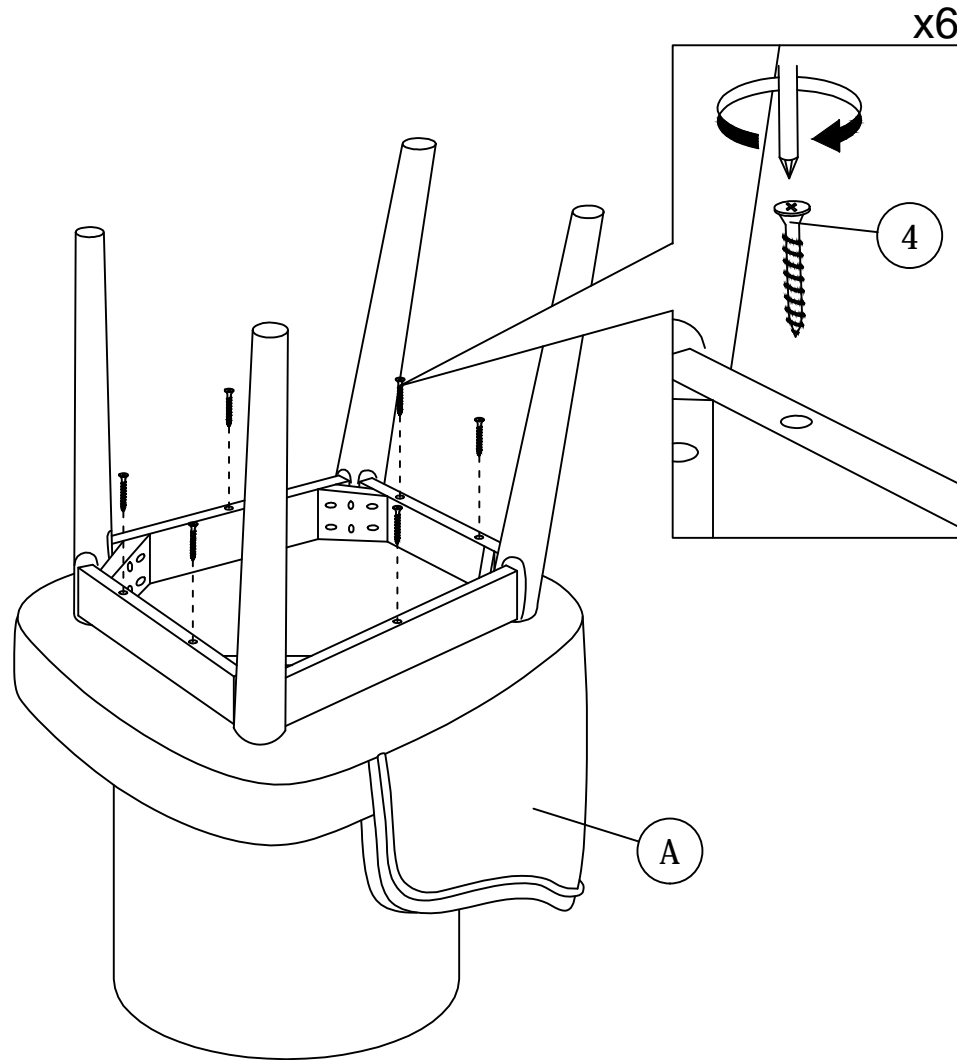
STEP 2



ASSEMBLY INSTRUCTIONS

STEP 3

Note : Follow the line drawing to assemble the chair leg.



STEP 4

