
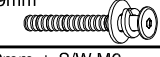
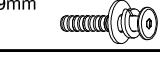



ASSEMBLY INSTRUCTIONS

MODEL : ANDREW-DC-10

- IMPORTANT NOTE :**
- * PLACE ALL WOODEN PARTS ON A CLEAN AND SMOOTH SUCH AS A RUG OR CARPET TO AVOID THE PARTS FROM BEING SCRATCHED.
 - * BEFORE YOU BEING, KINDLY FOLLOW THE ASSEMBLY INSTRUCTIONS STEP BY STEP.
 - * DO NOT TIGHTEN ALL SCREWS UNTIL THE CHAIR IS FULLY SET-UP.

HARDWARE LIST		PART LIST			
A	JCBC M6 x 80mm + S/W M6 + F/W M6 x 19mm 	4PCS	1	CHAIR BACK	1PC
B	JCBC M6 x 50mm + S/W M6 + F/W M6 x 19mm 	4PCS	2	FRONT LEG	2PCS
C	JCBC M6 x 40mm + S/W M6 + F/W M6 x 19mm 	2PCS	3	BOX SEAT	1PC
D	ALLEN KEY M4 	1PC			

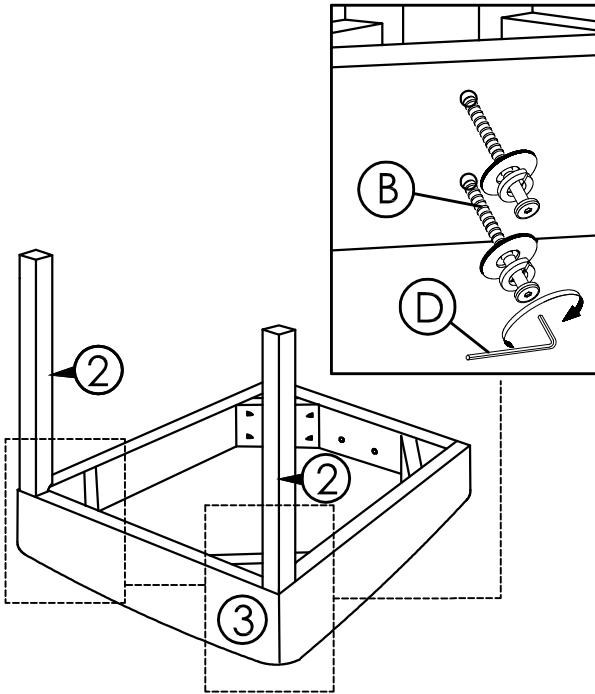
CAUTIONS :

(1) **DO NOT FULLY-TIGHTEN THE NUT OR NUT BOLTS INITIALLY UNTIL ALL NUTS OR BOLT IS READY ASSEMBLED.**

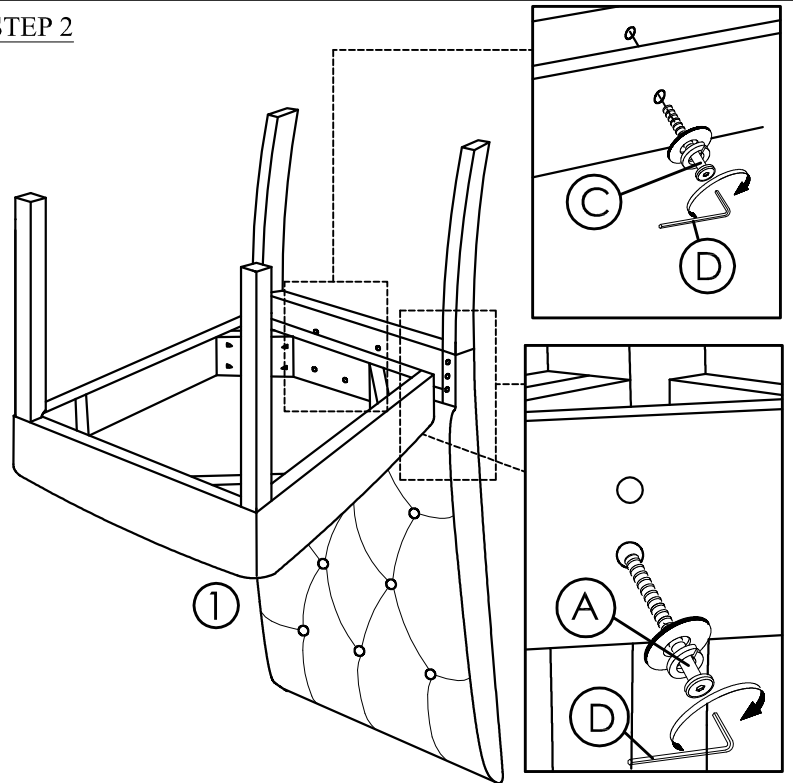
(TO AVOID CAUSING DAMAGES TO THE THREAD, DO NOT OVER-TIGHTEN THE NUTS OR BOLTS.)

(2) **KEEP ALL HARDWARE PART OUT OF REACH OF CHILDREN.**

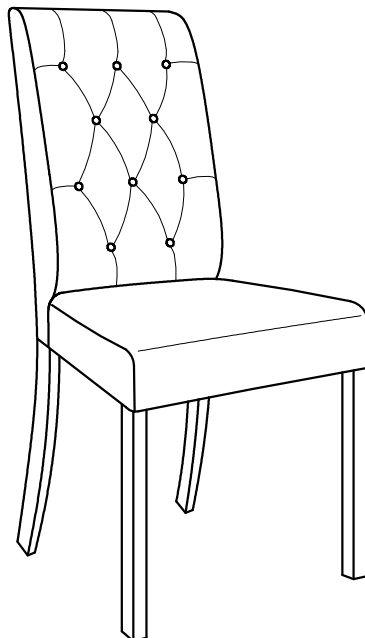
STEP 1



STEP 2



STEP 3



COMPLETED CHAIR ASSEMBLY.